

Apartment Morris

Region: The South East **Sleeps:** 4

Overview

Apartment Morris offers a sanctuary of style and sophistication nestled in the heart of London, just a stone's throw away from the iconic Westminster Abbey. This meticulously designed retreat offers an unparalleled blend of modern elegance and the warm comfort of a true home away from home, providing the perfect respite in the midst of the bustling city.

As you step into Apartment Morris, you'll instantly be transported to a world of serenity and elegance. The open-concept living space welcomes you with its sleek lines and chic decor, making it the ideal place to unwind after a day of exploring London's treasures. The covered balcony is the crowning jewel of this haven, offering a tranquil escape, rain or shine. It's where the indoors meet the outdoors, a lush oasis in the heart of the metropolis.

This modern flat boasts a private entrance, ensuring your privacy and independence during your stay. The unique design of Apartment Morris perfectly complements its surroundings, with a touch of sophistication that sets it apart from the rest. Inside, you'll find two inviting bedrooms, each equipped with comfortable double beds. The main bedroom also features a secluded workspace for those who need to attend to business matters. The two bathrooms are elegantly appointed, ensuring your convenience and comfort throughout your stay.

The living room is a cosy space, perfect for relaxing in front of the Smart TV. The fully equipped kitchen beckons to the culinary enthusiast, with top-of-the-line appliances and ample counter space. The dining area, suitable for up to six guests, is an inviting spot for shared meals and memories.

For those seeking climate control, underfloor heating is at



your disposal. Additionally, a central cooling system keeps the kitchen and living room comfortable, though it is notably absent from the bedrooms and bathrooms to ensure a peaceful night's rest.

While you're staying at Apartment Morris, if you ever need assistance or recommendations, the concierge service is at your service on weekdays from 9 AM to 5 PM.

Apartment Morris is not just a place to stay; it's a lifestyle experience, blending modern comfort with an elegant touch, and offering a warm and welcoming refuge in the heart of this vibrant city.

Facilities

Air-Con • City Homes & Apartments • Wow Factor • Walk to Restaurant • Wi-Fi/Internet • Easy By Train • Washing Machine • Coffee Machine • Hairdryer • TV • Laptop Friendly Workspace • Tumble Dryer • Dishwasher • Microwave

Interior & Grounds

The Apartment

Interior

- Living room with smart TV
- Fully equipped kitchen
- Dining area for six guests
- Bedroom 1: Double bed and secluded workspace
- Bedroom 2: Double bed
- Bathroom 1
- Bathroom 2

Exterior

- Private terrace
- Communal terrace

Additional Facilities

- Wi-Fi
- Underfloor heating
- Central cooling system in the kitchen & living room (not in any bedrooms or bathrooms)
- Concierge service from 9 AM - 5 PM on weekdays
- Essentials, linens and towels are provided



Location & Local Information

Apartment Morris is a prime holiday destination nestled in the heart of Westminster, London. This exquisite flat is strategically located amidst a treasure trove of iconic landmarks and attractions, offering an unforgettable vacation experience.

Westminster is synonymous with British history and political grandeur, and this apartment places you right at the heart of it all. A short ten-minute walk will take you to the historic Jewel Tower and Westminster Hall, where echoes of centuries past still resonate. The majestic Palace of Westminster and the world-renowned Big Ben are just an eleven-minute stroll away, inviting you to witness the grandeur of British governance.

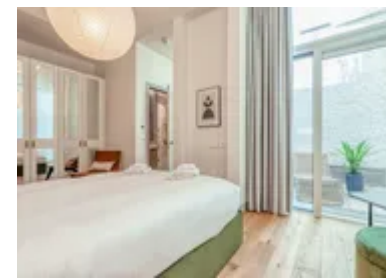
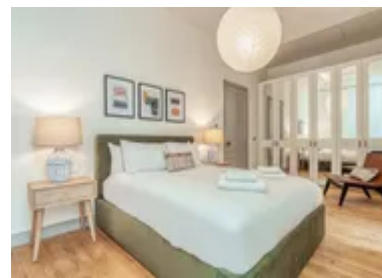
Beyond the political sphere, this location offers a glimpse into London's vibrant cultural scene. A leisurely twelve-minute walk will lead you to Buckingham Palace, while the SEA LIFE London Aquarium, London Eye, and The National Gallery are all within easy reach.

For transportation, you have the convenience of nearby bus stops and St James's Park subway station, allowing you to explore the city with ease. Additionally, the charming River Thames is within your grasp, offering scenic walks and river cruises to further enrich your London adventure.

Apartment Morris is the perfect launchpad for a holiday that seamlessly combines history, culture, and modern comfort in one of London's most cherished neighbourhoods.

Local Amenities

Nearest Airport	London Heathrow Airport (25 km)
Nearest Train Station	St James' Park Underground Station (300 m)



Nearest Airport	Sainsbury's Local (160 m)
Nearest Restaurant	Mio Restaurant & Bar (60m)
Nearest Bar/Pub	The Speaker (160m)
Sightseeing	Westminster Abbey (650m)

What we love

- Apartment Morris is a stone's throw from Big Ben, Buckingham Palace, and Westminster Abbey, making it a history lover's dream
- Enjoy exceptional Indian cuisine by Chef Amit Bagyal right in the building - a gastronomic delight at your doorstep
- Underfloor heating, Smart TV, and a fully equipped kitchen ensure a cosy and convenient stay in the heart of London

What you should know...

- There is no free parking available at this property
- Apartment Morris offers a concierge service from 9 AM to 5 PM on weekdays, ensuring that your stay is as seamless as possible
- Throughout the apartment, underfloor heating keeps you comfortably warm, and a central cooling system is present in the kitchen and living room, ensuring your comfort during the warmer months

Terms & Conditions

- **Security deposit:** Oliver's Travels to charge £200 to client's credit card before arrival and refunded two weeks after departure, subject to full site inspection.
- **Arrival time:** 15:00 - 20:00
- **Departure time:** 10:00
- **Energy costs included?:** Yes, included in the rental price.
- **Linen & towels included?:** Yes, included in the rental price.
- **Pets welcome?:** Not allowed.
- **End of stay cleaning:** Extra £230, paid to Oliver's Travels with the balance. Guests are required to leave the accommodation clean, tidy and in the same condition as on their arrival. Any extra cleaning, laundry, maintenance and/or rubbish disposal required will be charged against the security deposit.
- **Smoking Allowed?:** Smoking & Vaping are not permitted.
- **Heating costs included?:** Yes, included in the rental price.
- **Internet access?:** Wi-Fi internet access included.
- **Stag & Hen Do Allowed? :** Weddings, stag/hen parties and any special events are not allowed.