

Apartment Howe

Region: The South East **Sleeps:** 6

Overview

Apartment Howe is an exclusive penthouse retreat near Westminster Abbey, offering a haven of elegance and sophistication in the heart of London. This exquisite two-story penthouse is more than just a place to stay; it's a sanctuary where you can effortlessly unwind and bask in the essence of home away from home.

You'll first notice the sleek and contemporary design, a perfect blend of modern aesthetics and the warm, welcoming atmosphere that sets the stage for a relaxing stay. Apartment Howe is a trendy home with a touch of sophistication, making it an idyllic choice for travellers seeking a delightful urban escape.

Step outside onto the terrace, a hidden gem in the bustling city. It's the perfect spot to enjoy an evening aperitif while enjoying unique landmark views. Whether you're gazing at the iconic Westminster Abbey or the charming streets of Victoria, this terrace provides a slice of outdoor serenity right in the heart of the city.

Apartment Howe offers a harmonious blend of comfort and style. With three bedrooms, two featuring king-size beds and the third furnished with a double bed, you'll experience the utmost in restful slumber. Three bathrooms ensure that convenience and privacy are paramount. The living room is a cosy retreat with a Smart TV, offering entertainment at your fingertips.

The fully equipped kitchen is a culinary haven, perfect for preparing your own meals if you wish. A dining area, suitable for up to eight guests, is an ideal space to gather and enjoy a delicious meal with family or friends.

For those who need to stay connected or work remotely, there's a dedicated cosy workspace at your disposal. The



underfloor heating provides warmth during the colder months, ensuring you remain comfortable at all times. A central cooling system in the kitchen and living room maintains the perfect temperature, making your stay as pleasant as possible.

When you're ready to explore the city, you'll find yourself within walking distance of some of London's most iconic landmarks, thanks to the prime location near Westminster. But, at the end of the day, Apartment Howe will be your sanctuary, a place where you can truly relax and unwind.

Facilities

Air-Con • Washing Machine • TV • Wi-Fi/Internet • City Homes & Apartments • Coffee Machine • Hairdryer • Easy By Train • Laptop Friendly Workspace • Wow Factor • Lift • Ideal for Kids • Ideal for Teens • Walk to Restaurant • Tumble Dryer • Dishwasher • Microwave • Smart TV • Heating

Interior & Grounds

Apartment Interiors

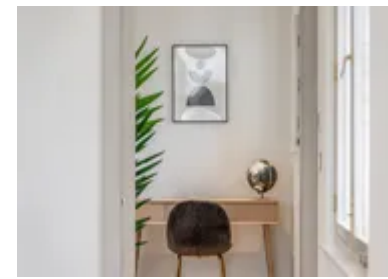
- Living room with smart TV
- Fully equipped kitchen
- Dining area for eight guests
- Separate toilet
- Bedroom 1: King-size bed
- Bedroom 2: King-size bed
- Bedroom 3: Double bed
- Bathroom 1
- Bathroom 2

Outside Grounds

- Private terrace
- Balcony
- Communal terrace

Additional Facilities

- Wi-Fi
- Underfloor heating
- Central cooling system in the kitchen & living room (not in any bedrooms or bathrooms)



Location & Local Information

Apartment Howe is a prime holiday destination nestled in the heart of Westminster, London. This exquisite flat is strategically located amidst a treasure trove of iconic landmarks and attractions, offering an unforgettable vacation experience.

Westminster is synonymous with British history and political grandeur, and this apartment places you right at the heart of it all. A short ten-minute walk will take you to the historic Jewel Tower and Westminster Hall, where echoes of centuries past still resonate. The majestic Palace of Westminster and the world-renowned Big Ben are just an eleven-minute stroll away, inviting you to witness the grandeur of British governance.

Beyond the political sphere, this location offers a glimpse into London's vibrant cultural scene. A leisurely twelve-minute walk will lead you to Buckingham Palace, while the SEA LIFE London Aquarium, London Eye, and The National Gallery are all within easy reach.

For transportation, you have the convenience of nearby bus stops and St James's Park subway station, allowing you to explore the city with ease. Additionally, the charming River Thames is within your grasp, offering scenic walks and river cruises to enrich your London adventure further.

Apartment Howe is the perfect launchpad for a holiday that seamlessly combines history, culture, and modern comfort in one of London's most cherished neighbourhoods.

Local Amenities

Nearest Airport	London Heathrow Airport (25 km)
Nearest Supermarket	Sainsbury's Local (160 m)



Nearest Train Station	St James' Park Underground Station (300 m)
Sightseeing	Westminster Abbey (500m)

What we love

- Apartment Howe is a stone's throw from Big Ben, Buckingham Palace, and Westminster Abbey, making it a history lover's dream
- Enjoy exceptional Indian cuisine by Chef Amit Bagyal right in the building - a gastronomic delight at your doorstep
- Underfloor heating, Smart TV, and a fully equipped kitchen ensure a cosy and convenient stay in the heart of London

What you should know...

- There is no free parking available at this property
- Please note that this residence is family-friendly, but due to the stairs within the flat, it is not suitable for toddlers. However, babies, infants, and children above 12 are most welcome
- Apartment Howe offers a concierge service from 9 AM to 5 PM on weekdays, ensuring that your stay is as seamless as possible

Terms & Conditions

- **Security deposit:** Oliver's Travels to charge £400 to client's credit card before arrival and refunded two weeks after departure, subject to full site inspection.
- **Arrival time:** 15:00 - 20:00
- **Departure time:** 10:00
- **Energy costs included?:** Yes.
- **Linen & towels included?:** Yes.
- **Pets welcome?:** Not allowed.
- **End of stay cleaning available?:** Extra £300 to be charged to Oliver's Travels with final balance. However, guests are required to leave the accommodation clean, tidy and in the same condition as on their arrival. Any extra cleaning, laundry, maintenance and/or garbage disposal required will be charged against the security deposit.
- **Smoking Allowed?:** Smoking & Vaping are not permitted.
- **Heating costs included?:** Yes.
- **Internet access?:** Wi-Fi internet access included.
- **Stag & Hen Do Allowed? :** Weddings, stag/hen parties and any special events are not allowed.