

Wagon Apartment

Region: The South East Sleeps: 3

Overview

Nestled in the heart of London, Wagon Apartment near Leicester Square is a true gem for those seeking a sophisticated yet inviting urban retreat. This one-bedroom apartment is a welcome respite in the bustling city, where sleek contemporary design blends seamlessly with the comforting ambience of a home away from home.

As you step inside, you'll find yourself in a stylish open-plan living space that effortlessly combines the living room, dining area, and a fully equipped kitchen. The living room is a cosy haven with a Smart TV, perfect for unwinding after a day of exploring the city. The dining area, suitable for up to two guests, provides an intimate setting for meals or a quiet spot to catch up on work at the adjacent desk space.

The bedroom boasts a comfortable double bed, promising a peaceful night's sleep in the midst of the vibrant city. The apartment's modern amenities and thoughtful touches ensure a well-rounded atmosphere, making it an ideal choice for both leisure and business travellers. Whether you're here to explore the city's cultural landmarks or embark on a culinary adventure, the Wagon Apartment is perfectly suited to your needs.

Located within walking distance of Trafalgar Square, Piccadilly Circus, Mayfair, Soho, and Covent Garden, this apartment is a gateway to all that London has to offer. The West End's renowned theatres, including the Royal Opera House and the Donmar Warehouse, are a stone's throw away, offering a variety of awe-inspiring performances, from classical ballet to cutting-edge plays.

The neighbourhood is a paradise for the food enthusiasts with a diverse selection of restaurants, cafes, and bars. Whether you're in the mood for international cuisine or



traditional British pub fare, you'll find something to satisfy your palate.

Should you crave a touch of nature, St James's Park and the serene River Thames are just a short stroll away.

Wagon Apartment near Leicester Square is not just a place to stay; it's your gateway to the heart of London's culture, cuisine, and natural beauty. Enjoy all the city has to offer, then return to the comfort of your modern urban oasis. Your London adventure begins here.

Facilities

City Homes & Apartments • Wow Factor • Not For Little Ones • Walk to Restaurant • Wi-Fi/Internet • Easy By Train • Washing Machine • Hairdryer • TV • Laptop Friendly Workspace • Tumble Dryer • Dishwasher • Microwave • Heating

Interior & Grounds

The Apartment

Interior

- Open plan living room with a Smart TV
- Fully equipped kitchen
- Dining area for two guests
- Bedroom 1: Double bed
- Desk space
- Bathroom

Additional Facilities

- Wi-Fi
- Essentials, linens and towels are provided



Location & Local Information

Wagon Apartment is perfectly situated in the heart of London, making it an exceptional holiday destination for travellers looking to immerse themselves in the vibrant energy and rich culture of this iconic city. Located near Leicester Square, this prime address offers unparalleled access to some of London's most famous landmarks and attractions.

Within a leisurely stroll, you'll discover Trafalgar Square, a hub of artistic and historical significance, and Piccadilly Circus, known for its dazzling electronic displays.

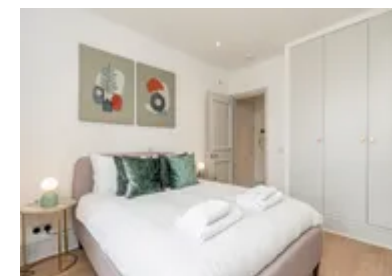
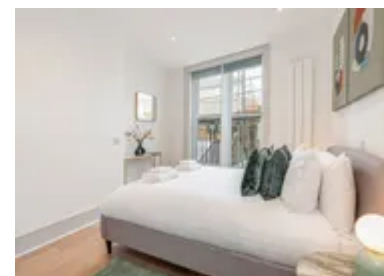
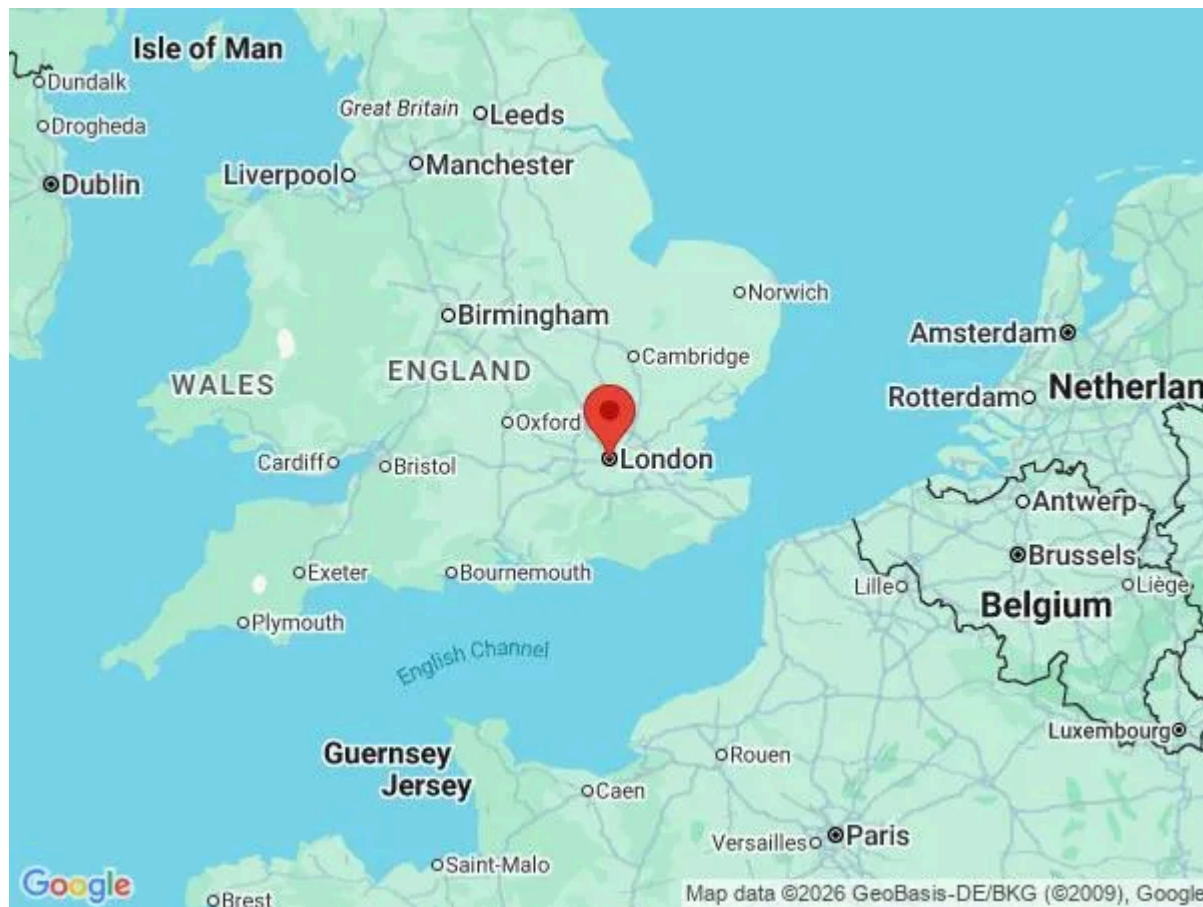
The fashionable district of Mayfair and the eclectic charm of Soho are also within reach, ensuring that you're at the epicentre of the city's buzz.

For lovers of the arts, the West End's renowned theatres, including the Royal Opera House and Donmar Warehouse, provide a feast of world-class performances, from classical ballet to cutting-edge plays.

Additionally, food enthusiasts will delight in the neighbourhood's diverse dining options, offering everything from international cuisine to traditional British pub fare.

And for those seeking a moment of tranquillity, St James's Park and the scenic River Thames are a short walk away, offering a serene escape from the urban hustle and bustle.

Wagon Apartment's location is the perfect launchpad for an unforgettable London adventure, where history, culture, entertainment, and culinary delights are all at your doorstep.



Local Amenities

Nearest Airport	London Heathrow Airport (26 km)
Nearest Train Station	Leicester Square Underground Station (220 m)

Nearest Supermarket	Sainsbury's Local (350 m)
Nearest Restaurant	Whitcomb's (80m)
Nearest Bar/Pub	Joshua's Tavern (75m)
Sightseeing	National Portrait Gallery (110m)

What we love

- Central London location, steps from iconic landmarks like Trafalgar Square and Soho.
- Contemporary yet inviting interior with a fully equipped kitchen.
- A hub for culture enthusiasts, close to world-renowned West End theatres and diverse dining options.
- Peaceful retreat near St James's Park and the River Thames.

What you should know...

- There is no free parking available at this property.
- In light of the current situation, we kindly ask our guests to consume electricity and gas mindfully. Please note we will add an additional charge for excessive energy usage.
- Guests are free to check in on their own with a self-check-in system.
- The property is on the second floor, and no lift is available.
- The apartment is not child-friendly and is better suited to couples.

Terms & Conditions

- **Security deposit:** Oliver's Travels to charge £200 to client's credit card before arrival and refunded two weeks after departure, subject to full site inspection.
- **Arrival time:** 15:00 - 20:00
- **Departure time:** 10:00
- **Energy costs included?:** Yes, included in the rental price.
- **Linen & towels included?:** Yes, included in the rental price.
- **Pets welcome?:** Not allowed.
- **End of stay cleaning available?:** Extra £125 to be charged to Oliver's Travels with final balance. However, guests are required to leave the accommodation clean, tidy and in the same condition as on their arrival. Any extra cleaning, laundry, maintenance and/or garbage disposal required will be charged against the security deposit.
- **Smoking Allowed?:** Smoking & Vaping are not permitted.
- **Heating costs included?:** Yes, included in the rental price.
- **Internet access?:** Wi-Fi internet access included.
- **Stag & Hen Do Allowed? :** Weddings, stag/hen parties and any special events are not allowed.