

# Jaffa Apartment

**Region:** The South East   **Sleeps:** 2

---

## Overview

Nestled amidst the vibrant heart of London, Jaffa Apartment, situated near Leicester Square, is a welcome retreat in the bustling city. This sleek and sophisticated urban haven seamlessly marries contemporary elegance with a comforting, homely ambience.

As you step inside, the apartment exudes a sense of airy spaciousness. The open-plan main living area is a striking blend of modernity and comfort. Crisp white walls and chic furnishings create an illusion of more room, inviting you to relax and unwind. Every corner of this urban oasis is adorned with modern, stylish decor, promising a visually pleasing and tranquil experience.

The living room beckons with its inviting ambience and boasts a Smart TV, promising entertainment and relaxation. The fully equipped kitchen invites culinary exploration, while the dining area is perfect for intimate meals for two. Additionally, a dedicated desk space offers a conducive environment for remote work or catching up on emails.

Jaffa Apartment offers a thoughtfully curated living space that includes one bedroom featuring a comfortable double bed. The bedroom provides a peaceful escape, ensuring a rejuvenating night's sleep. The bathroom is tastefully appointed, making your daily routines a pleasure.

This luxurious haven is complemented by the gracious provision of an extensive area guide to help you navigate the city's attractions. The 24/7 assistance ensures you're never alone in the bustling metropolis.

Beyond the apartment's charms, the area is a cultural gem surrounded by London's renowned West End theatres. The Royal Opera House and the Donmar Warehouse are



just a stone's throw away, offering a plethora of captivating performances, from classical ballet to avant-garde dramas.

For the gastronomically inclined, this neighbourhood is a true paradise. An array of restaurants, cafes, and bars awaits your exploration, promising an eclectic culinary journey. Whether you crave international flavours or traditional British pub fare, there's something to satiate every palate.

In essence, the Jaffa Apartment is your urban sanctuary in the heart of London, offering an enchanting blend of style, comfort, and accessibility. Experience the best of the city while indulging in the serenity of your private retreat.

## Facilities

Wi-Fi/Internet • TV • Historical Sites • Hairdryer • City Homes & Apartments • Washing Machine • Easy By Train • Wow Factor • Laptop Friendly Workspace • Not For Little Ones • Walk to Restaurant • Tumble Dryer • Dishwasher • Microwave • Smart TV • Heating

# Interior & Grounds

## The Apartment

### *Interior*

- Open plan living room with a Smart TV
- Fully equipped kitchen
- Dining area for two guests
- Bedroom 1: Double bed
- Desk space
- Bathroom

### **Additional Facilities**

- Wi-Fi
- Essentials, linens and towels are provided



# Location & Local Information

Jaffa Apartment is perfectly situated in the heart of London, making it an exceptional holiday destination for travellers looking to immerse themselves in the vibrant energy and rich culture of this iconic city. Located near Leicester Square, this prime address offers unparalleled access to some of London's most famous landmarks and attractions.

Within a leisurely stroll, you'll discover Trafalgar Square, a hub of artistic and historical significance, and Piccadilly Circus, known for its dazzling electronic displays. The fashionable district of Mayfair and the eclectic charm of Soho are also within reach, ensuring that you're at the epicentre of the city's buzz.

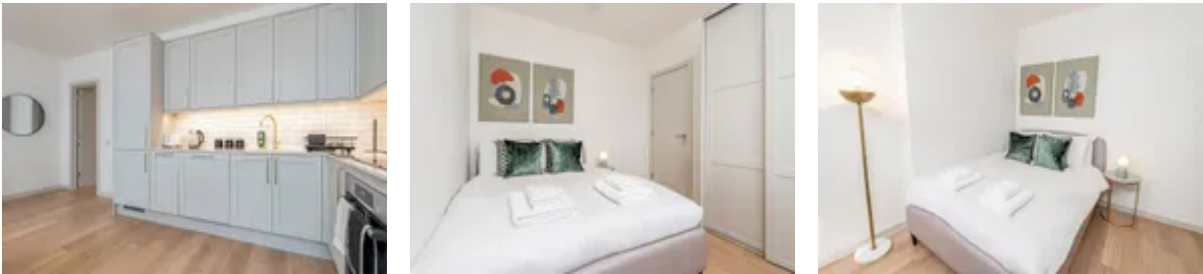
For lovers of the arts, the West End's renowned theatres, including the Royal Opera House and Donmar Warehouse, provide a feast of world-class performances, from classical ballet to cutting-edge plays.

Additionally, food enthusiasts will delight in the neighbourhood's diverse dining options, offering everything from international cuisine to traditional British pub fare. And for those seeking a moment of tranquillity, St James's Park and the scenic River Thames are a short walk away, offering a serene escape from the urban hustle and bustle.

Jaffa Apartment's location is the perfect launchpad for an unforgettable London adventure, where history, culture, entertainment, and culinary delights are all at your doorstep.

## Local Amenities

Nearest Airport	London Heathrow Airport (26 km)
Nearest Train Station	Leicester Square Underground Station (220 m)



Nearest Supermarket	<b>Sainsbury's Local (350 m)</b>
Nearest Restaurant	<b>Whitcomb's (80m)</b>
Nearest Bar/Pub	<b>Joshua's Tavern (75m)</b>
Sightseeing	<b>National Portrait Gallery (110m)</b>

## What we love

- The apartment boasts bright and airy spaces, where sleek city living meets that cosy 'home' feeling
- With West End theatres at your doorstep, culture and entertainment are literally a stone's throw away.
- With 24/7 support and a detailed area guide, you're set for a hassle-free stay

## What you should know...

- There is no free parking available at this property
- In light of the current situation, we kindly ask our guests to consume electricity and gas mindfully. Please note we will add an additional charge for excessive energy usage
- Guests are free to check in on their own with a self-check-in system
- The property is on the fourth floor, and no lift is available
- The Apartment is not child-friendly and is better suited to couples

# Terms & Conditions

- **Security deposit:** Oliver's Travels to charge £200 to client's credit card before arrival and refunded two weeks after departure, subject to full site inspection.
- **Arrival time:** 15:00 - 20:00
- **Departure time:** 10:00
- **Energy costs included?:** Yes, included in the rental price.
- **Linen & towels included?:** Yes, included in the rental price.
- **Pets welcome?:** Not allowed.
- **End of stay cleaning available?:** Extra £125 to be charged to Oliver's Travels with final balance. However, guests are required to leave the accommodation clean, tidy and in the same condition as on their arrival. Any extra cleaning, laundry, maintenance and/or garbage disposal required will be charged against the security deposit.
- **Smoking Allowed?:** Smoking & Vaping are not permitted.
- **Heating costs included?:** Yes, included in the rental price.
- **Internet access?:** Wi-Fi internet access included.
- **Stag & Hen Do Allowed? :** Weddings, stag/hen parties and any special events are not allowed.