

# Apartment Claret

**Region:** Espace Killy   **Sleeps:** 5

---

## Overview

Welcome to Apartment Claret, a stylish duplex in the heart of Val d'Isère, offering year-round appeal for families and friends. Just moments from the slopes, lifts and resort centre, this two-bedroom apartment comfortably sleeps up to five guests in thoughtfully designed interiors. A warm and inviting lounge with a working fireplace, soft throws and expansive windows offers the ideal spot to relax after a day exploring the Alps. Whether you're skiing through powder, hiking mountain trails or cycling along alpine roads, this apartment is a perfect base for all seasons.

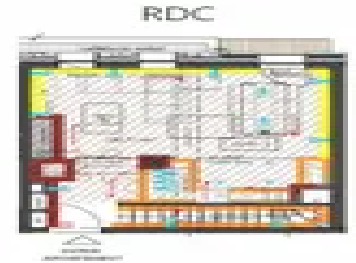
The open-plan living and dining area connects seamlessly to a fully equipped kitchen featuring an oven, hob, Nespresso machine and fondue and raclette appliances for authentic Alpine evenings. The sleeping arrangements are flexible and family-friendly, with a double bedroom and a larger family room, each with its own ensuite bathroom. A separate WC adds convenience.

In winter, enjoy ski-in proximity to the extensive Espace Killy domain, with options for snowboarding, dog sledding and snowshoeing. In summer, the region transforms into a playground of lakes, trails and panoramic views, with activities such as golf, paragliding and wild swimming within easy reach. After an active day, return to the calm of Apartment Claret, where thoughtful touches like a wine fridge, washer-dryer and optional baby equipment make your stay feel effortless.

With its prime location, smart layout and access to both vibrant village life and outdoor adventure, Apartment Claret offers an elegant escape whatever the season.

## Facilities

Wi-Fi/Internet • Ski Lift Nearby • Walk To Slopes • Lakes and Mountains • Washing Machine • Coffee Machine • Paragliding • Self-Catered • Skiing • Cycling • Tennis Nearby • Historical Sites • Watersports • Horse Riding • Walking/Hiking Paths • Golf Nearby • Fishing • Wine Tasting • TV • Rural Location • Walk to Village • Cots (Cribs) • Great Value • Summer Chalet • Chalet Apartment • Ski Locker • Bathroom Toiletries • Ideal for Babies & Toddlers • Ideal for Kids • Ideal for Teens • Walk to Restaurant • Tumble Dryer • Microwave • Wine Cellar • Working Fireplace/Woodburner • Heating • High Chair(s) • Parking Space • Outstanding Landscapes • Outdoor Pursuit & Activities • Tourist Towns & Villages



# Interior & Grounds

## The Apartment

### Layout

#### Level 0

- Lounge space with sofas, chairs, TV and fireplace
- Dining area with table and chairs
- Fully-equipped kitchen with oven and hob, Nespresso coffee machine, fondue appliance and raclette machine

#### Level -1

- Bedroom with separable double bed (160 x 200), wardrobe and ensuite bathroom with shower, basin and towel dryer
- Family bedroom with single bed (90 x 200), separable double bed (160 x 200), wardrobe and ensuite bathroom with bathtub, double basin, toilet and towel dryer
- WC

### Additional Facilities

- Wood fireplace
- Parking space
- Ski locker
- WIFI
- TV
- Baby cot (available upon request)
- High chair (available upon request)
- Coffee machine
- Microwave
- Fridge
- Raclette machine
- Fondue appliance
- Vacuum
- Nespresso coffee machine
- Kitchen exhaust hood
- Kettle
- Toaster
- Refrigerated wine cellar
- Washing-drying machine
- Induction hobs
- Oven



## Location & Local Information

Apartment Claret is ideally positioned in Val d'Isère, within easy walking distance of the resort's lively centre and just six hundred metres from the nearest ski lift. The location offers quick access to shops, restaurants and essential services, while the slopes are close enough for guests to ski back almost to the door. Whether you're heading out for the first lift or returning from après-ski, everything you need is just moments away.

In winter, the apartment provides a gateway to the renowned Espace Killy ski area, known for its varied terrain and snow-sure conditions. When the snow melts, Val d'Isère transforms into a summer playground, with hiking, mountain biking, climbing and wild swimming among the many activities available. Families will find a range of options nearby, including adventure parks, golf courses and local events throughout the season.

With its central yet peaceful setting, Apartment Claret offers year-round appeal for those looking to make the most of both the mountains and the vibrant village life. Whether visiting for winter sports or summer exploration, the location ensures convenience, variety and easy access to the natural beauty of the French Alps.

### Local Amenities

Nearest Airport	Geneva (178 km)
Nearest Airport	Lyon (221 km)
Nearest Bar/Pub	Chez Jules Le Coin Des Amis (550 m)
Nearest Bar/Pub	Cocorico (600 m)
Nearest Golf	Golf du Lac Tignes (14.7 km)
Nearest Piste	Traversée du Laisinant (400 m)



Nearest Restaurant	Les Toits de Val d'Isère (400 m)
Nearest Ski Hire	Sport 2000 Iseran Sports (400 m)
Nearest Ski Lift	Solaise / Olympique (600 m)
Nearest Supermarket	Spar (400 m)
Nearest Tennis	Tennis Adventure Val d'Isere (2.8 km)
Nearest Train Station	Bourg St Maurice (31.9 km)
Nearest Village	Val d'Isere (550 m)

## What we love

- A family-friendly layout with flexible sleeping arrangements and ensuite bathrooms in both bedrooms is great for multiple types of groups
- It was wonderful to be within walking distance of ski lifts, restaurants and shops
- A great-value base for exploring the vast Espace Killy ski domain or summer Alpine adventures

## What you should know...

- Local supermarkets and bakeries are within walking distance but may have limited opening hours on Sundays
- The village can be lively during peak ski season, though the apartment itself remains peacefully tucked away
- Heating is included and centrally controlled, maintaining a consistent temperature throughout the apartment

# Terms & Conditions

- **Security deposit:** Secure link sent to the client's email to fill in the details of the client's bank card online 2 weeks before the arrival for the amount of €2000. This is in the form of a card authorisation, funds are not cashed
- **Arrival time:** Check-in 5.00 PM.
- **Departure time:** Check-out 10.00 AM.
- **Energy costs included?:** Yes, included in the rental price.
- **Linen & towels included?:** Yes, included in the rental price.
- **Pets welcome?:** Not allowed.
- **Other Ts and Cs:** Please note that rental of a cot and highchair is at an extra cost paid directly to the owner: Cot: 40€ per week Highchair: 30€ per week
- **Changeover day:** Saturday.
- **End of stay cleaning available?:** Yes, included in the rental price. However, guests are required to leave the accommodation clean, tidy and in the same condition as on their arrival. Any extra cleaning, laundry, maintenance and/or garbage disposal required will be charged against the security deposit.
- **Smoking Allowed?:** Smoking & Vaping are not permitted.
- **Minimum stay:** 7 nights.
- **Heating costs included?:** Yes, included in the rental price.
- **Tax:** French Visitors Tax payable alongside balance (typically costs €1-€5 per adult per night- please enquire if exact amount is required).
- **Internet access?:** Yes, internet access is included in the rental price.
- **Property Licence Number:** 73304000931OS

**The chalet is available year-round, but facilities, property and local amenities may vary depending upon season.**