

Apartment Sylvian

Region: Espace Killy **Sleeps:** 2

Overview

Conveniently located at the base of the ski slopes, Apartment Sylvian beckons with its alluring charm and a prime location that promises breathtaking mountain vistas. As you step inside, you're greeted by a refined modern atmosphere that seamlessly intertwines elegance with comfort. The heart of this 53m² abode is the expansive living room, adorned in light neutral tones that create an airy ambience.

Here, a plush convertible sofa invites you to sink into its soft embrace, doubling as a cosy double bed for two additional guests. A well-equipped kitchen, with high-end appliances including a combination oven/microwave, fridge-freezer, dishwasher, raclette machine, kettle, Nespresso coffee machine, and toaster, stands ready to fulfil your culinary desires.

Adjacent to the living area lies a welcoming dining space, featuring a table and chairs to seat up to 6 guests, providing plenty of room for the whole group to enjoy busy breakfasts or intimate evening meals. The layout of Apartment Sylvian seamlessly flows, promoting a sense of togetherness while maintaining individuality in each space. The beauty of this apartment lies not only in its communal charm but also in its thoughtful division of private sanctuaries.

Apartment Sylvian features one stylish bedroom, decorated and furnished to the same high standard as the communal spaces, and boasting a double bed that can be converted into two singles if desired. Complete with a wardrobe, snug armchair and a balcony showcasing stunning mountain views, this welcoming space promises a relaxing and restful night's sleep.

The apartment's shared bathroom, a stylish haven in dazzling white, offers a sanctuary for relaxation with its bathtub and modern amenities. For added convenience, a washing machine discreetly resides within, perfect for those indulging in an extended stay at Apartment Sylvian. In this coveted corner of Val d'Isère, where the preserved old village meets trendy addresses, and the snow front of Solaise/Bellevard beckons, Apartment Sylvian is more than just a dwelling—it's a gateway to a world of alpine wonders and unparalleled skiing adventures.

The chalet is available year-round, but facilities, property and local amenities may vary depending upon season.

Winter | Ski Chalet

November - April / May

During the winter season, Apartment Sylvian becomes a cozy haven for ski enthusiasts. Its convenient location at the base of the ski slopes allows guests to effortlessly access the snow front of Solaise/Bellevard, promising



unparalleled skiing adventures. The expansive living room with a plush convertible sofa and a well-equipped kitchen provides a warm retreat after a day on the slopes. The stylish bedroom offers a restful night's sleep, and the shared bathroom with a bathtub becomes a sanctuary for relaxation. The balcony showcases stunning winter landscapes, creating a picturesque backdrop for guests to enjoy during their stay. Whether indulging in busy breakfasts or intimate evening meals, the dining space with seating for up to 6 guests fosters a sense of togetherness.

Summer | Alpine Chalet

June - August

In the summer months, Apartment Sylvian transforms into a tranquil retreat amidst the alpine beauty. The preserved old village meets trendy addresses, offering a unique blend of history and modernity. The balcony becomes a perfect spot to soak in the summer sun and enjoy the mountain views. The well-equipped kitchen caters to culinary desires, and the dining space invites guests to savor meals while basking in the warm weather. The bedroom, with its comfortable furnishings and mountain views, continues to provide a relaxing escape. The shared bathroom remains a stylish haven, and the washing machine adds convenience for extended stays. Whether exploring the vibrant surroundings or simply unwinding in the beautifully appointed apartment, Apartment Sylvian offers an idyllic setting for a memorable summer retreat.

Facilities

Horse Riding • Ski Lift Nearby • Walk To Slopes • Lakes and Mountains • Washing Machine • Coffee Machine • Paragliding • Self-Catered • Skiing • Cycling • Tennis Nearby • Historical Sites • Watersports • Wi-Fi/Internet • Ski-In/Ski-Out • Walking/Hiking Paths • Golf Nearby • Fishing • Wine Tasting • TV • Lift • Walk to Village • Rural Location • Summer Chalet • Chalet Apartment • Ideal for Kids • Ideal for Teens • Walk to Restaurant • Dishwasher • Microwave • Heating • Outstanding Landscapes • Outdoor Pursuit & Activities • Tourist Towns & Villages

Interior & Grounds

The Apartment

Layout

Interior

- Lounge space with convertible sofa, coffee tables and TV
- Dining area with table and 6 chairs
- Fully-equipped kitchen with combination oven/microwave, fridge-freezer, kettle, toaster, raclette machine, Nespresso coffee machine, dishwasher
- Bedroom with double bed (160 x 200 - can be converted into two singles), armchair, wardrobe, chest of drawers, balcony
- Bathroom with bathtub, basin, washing machine
- WC

Outdoor spaces

- Balcony

Additional facilities

- WiFi
- Ski locker
- Elevator



Location & Local Information

At the very source of the Isère River, where it has sculpted the picturesque Tarentaise valley, Val d'Isère unfolds a charming Alpine gem with a history as rich as its snowfall. Once a secluded hamlet, the village transformed into a renowned winter sports resort, now standing proud as one of the world's ski capitals.

Imagine waking up in Apartment Sylvian, your doorstep literally at the centre of this winter wonderland—right in the vibrant heart of Val d'Isère. As you step outside, the Solaise Express Olympique lift stands a mere 10 metres away, beckoning you to embark on a seamless journey to the slopes.

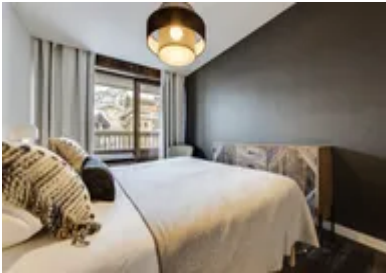
The allure of Val d'Isère extends beyond its immediate surroundings. The resort, nestled in a valley surrounded by 360° of majestic mountains and larches, spans 4 kilometres from La Daille to Fornet. This charming stretch is a testament to the resort's lively spirit, thriving not only in the winter but also in the vibrant summer months, with the added advantage of proximity to Italy.

Val d'Isère is a paradise for ski enthusiasts, boasting a ski area with various runs suitable for all levels. While the resort maintains its technical reputation, it surprises beginners with 21% green runs and 38% blue runs spread throughout the area, ensuring a fulfilling experience for skiers of every calibre.

What sets Val d'Isère apart is not only its exceptional ski terrain but also its weather phenomenon known as the "east return." Originating from the Italian summits, this meteorological dance blankets the Val d'Isère ski area with abundant snow, surpassing the quality found in other Alpine massifs.

The resort's geographical blessings gift it with one of the longest winter seasons in Europe, spanning from late November to early May. Imagine enjoying an extended skiing adventure, surrounded by the charm of Val d'Isère's legendary establishments like Blizzard, Les Barmes de l'Ours, the Yule, and the Michelin-starred L'Atelier d'Edmond. After a day on the slopes, indulge in the après-ski delights offered by Folie Douce, Baraque, and Chez Jules.

Yet, beyond the glitz and glamour, Val d'Isère remains grounded in the warmth and character of generations of locals. Families have shaped this resort, fostering a community that is not just sporty and demanding but also friendly, engaging, and proud. The annual calendar is dotted with diverse events, from music festivals to sports competitions, creating a dynamic tapestry of experiences that add to the resort's allure. In Val d'Isère, it's not just about skiing; it's about immersing yourself in a living, breathing mountain community, where every season brings new adventures and cherished memories.



All-Year Activities	Winter Activities	Summer Activities
<ul style="list-style-type: none">- Skiing- Paragliding- Ice Skating- Mountaineering- Guided Tours- Hiking	<ul style="list-style-type: none">- Ski Off Piste- Ski Touring- Pedestrian and snowshoer walks- Snowboarding- Cross Country Skiing	<ul style="list-style-type: none">- Trekking and Hiking- Mountain Bike / eBike- Trail Running- Rock Climbing- Road Cycling

- Altitude Experiences	- Ice Climbing	- Water Sports
- Horse Riding	- Dog Sledging	- Golf / Mini-golf
- Bowling	- Heliski	- Adventure and Fun Parks
- Local Markets	- Snowshoeing	- Tennis
- Aquatics	- Speed Riding	- Squash
- Fitness Courses	- Ski Joering	- Lake Swimming
	- Adaptive Skiing	- Fishing
	- MTB on snow	- Paintballing
	- First tracks skiing	- Trampolining
	- Bun J Ride	- Archery and rifle shooting
	- Ice Diving	- Acroland
	- Ice Floating	- Skateboarding
	- Snowtubing	- Dam Visits
	- Microlight	- White water swimming
	- Evening in a yurt	- Kayaking / Rafting
	- Luge Snooc	- Via Ferreta
	- Moonbikes	- Canyoning
	- Snowmobiling	- Quad and Buggy Driving

Local Amenities

Nearest Airport	Geneva (223 km)
Nearest Airport 2	Lyon (221 km)
Nearest Train Station	Bourg St Maurice (31.5 km)
Nearest Village	Val d'Isere (0 m)
Nearest Town	Bourg St Maurice (31.7 km)
Nearest Piste	Solaise (10 m)
Nearest Ski Lift	Olympique / Solaise (10 m)
Nearest Ski Hire	Snowberry Streetside (230 m)
Nearest Golf	Golf du Lac Tignes (14.2 km)
Nearest Tennis	Tennis Adventure Val d'Isere (2.2 km)

Nearest Track	Solaise (10 m)
Nearest Lift	Olympique / Solaise (10 m)
Nearest Equipment Hire	Intersport (170 m)
Nearest Restaurant	La Baraque (400 m)
Nearest Bar/Pub	Cocorico (400 m)
Nearest Supermarket	Sherpa (300 m)

What we love

- We loved the apartment's location, right in the heart of Val d'Isère
- Apartment Sylvian features spacious, open-plan layout with modern amenities
- The balcony is a great spot for taking in the views while enjoying a morning cuppa

What you should know...

- An additional two guests can be accommodated on the convertible sofa in the living area
- The double bed can be made into two singles if desired
- The apartment features a washing machine, which is located in the bathroom

Terms & Conditions

- **Security deposit:** Secure link sent to the client's email to fill in the details of the client's bank card online 2 weeks before the arrival for the amount of €1500. Funds won't be taken or blocked on the credit card in this case.
- **Arrival time:** Check-in 5.00 PM.
- **Departure time:** Check-out 10.00 AM.
- **Energy costs included?:** Yes, included in the rental price.
- **Linen & towels included?:** Yes, included in the rental price.
- **Pets welcome?:** Not allowed.
- **Changeover day:** Saturday.
- **End of stay cleaning available?:** Yes. However, guests are required to leave the accommodation clean, tidy and in the same condition as on their arrival. Any extra cleaning, laundry, maintenance and/or garbage disposal required will be charged against the security deposit.
- **Smoking Allowed?:** Smoking & Vaping are not permitted.
- **Minimum stay:** 7 nights.
- **Heating costs included?:** Yes, included in the rental price.
- **Tax:** French Visitors Tax payable alongside balance (typically costs €1-€5 per adult per night- please enquire if exact amount is required).
- **Internet access?:** Yes, internet access is included in the rental price.
- **Property Licence Number:** 7330400124546

The chalet is available year-round, but facilities, property and local amenities may vary depending upon season.