

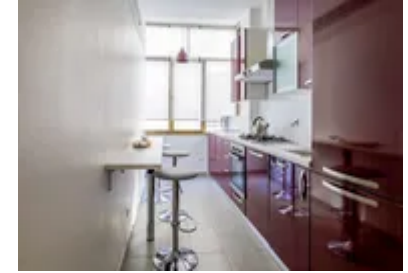
Apartment Fulvia

Region: Rome Sleeps: 13

Overview

Tucked away in the charming and peaceful district of San Saba, Apartment Fulvia offers a stylish escape just 2 km from the Colosseum. Designed for comfort and convenience, this spacious flat welcomes families and groups looking for a refined stay in the heart of the Eternal City. Large windows and two private terraces fill the interiors with natural light, creating an inviting atmosphere to unwind after a day of exploration. The thoughtful blend of contemporary design, warm parquet flooring, and soft pastel tones adds a touch of elegance, while floral-themed wallpaper brings a subtle, artistic charm.

Step onto the generous terraces to sip an aperitif at sunset or enjoy a leisurely al fresco dinner. The open-air space, complete with plush seating and a dining table for ten, invites guests to soak in Rome's vibrant atmosphere while nestled in a tranquil residential setting. With easy access to the city's rich history, culture, and culinary delights, Apartment Fulvia is the perfect base for an unforgettable Roman getaway.



Facilities

City Homes & Apartments • Historical Sites • Air-Con • Ideal for Kids • Special Offer • Chef/Cook Available • Has Discount • Ideal for Teens • <1hr to Airport • Walk to Restaurant • Wi-Fi/Internet • On-Street Parking • Tourist Towns & Villages • TV • Laptop Friendly Workspace • DVD • Dishwasher • Microwave • Pre-Stocked Fridge Available • Cooking Classes Available • Transfers Available • Babysitting Available • Ideal for Babies & Toddlers

Interior & Grounds

Interior

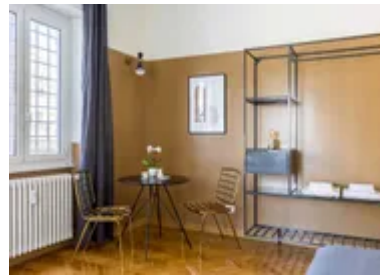
- Living room with two sofas, coffee table, French doors with natural lighting, armchair and dining table for eight
- Kitchen with fully equipped amenities, breakfast bar with three stools
- Bedroom with double bed, sofa-bed, workspace desk, clothing rack and bedside floating table with lamps on either side
- Bedroom with double bed, clothing rack with single chair, access to outdoor balcony terrace
- Bedroom with double bed, sofa-bed, seating area with coffee table, clothing rack and bedside table with bedside lamp
- Bedroom with bunkbeds and backless seat
- Bathroom with handheld shower
- Bathroom with shower
- Bathroom with rainfall and hand-held shower

Exterior

- Main terrace 60sqm with sofa, chairs and parasol
- AI-fresco dining table for ten
- Side terrace 20sqm

Additional Facilities

- Workspace office and ottoman
- Wi-Fi Internet throughout apartment
- Air conditioning
- Lift (not suitable for wheelchairs)
- Cot and Additional bed
- 40" TV screen with DVD player



Location & Local Information

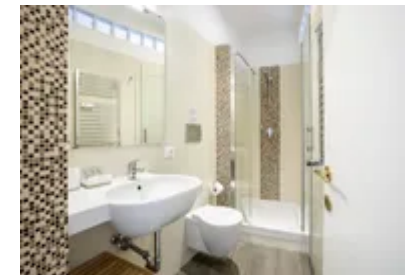
Apartment Fulvia is strategically positioned in the serene San Saba neighbourhood, making it an ideal holiday destination in the heart of Rome. This modern flat is located two kilometres from the iconic Colosseum and offers tranquillity and accessibility. Nestled on the first floor of a residential building, the property provides a peaceful retreat from the city's hustle and bustle.

Surrounded by historical landmarks, Apartment Fulvia places you within reach of Rome's most famous attractions, including Piazza Navona, the Pantheon, Trastevere, and the Trevi Fountain. The nearby *San Saba* district offers an authentic Roman experience, with charming streets, local shops, and traditional eateries. Enjoy the convenience of being close to the city centre while residing in a quiet and residential locale.

The two expansive terraces allow you to soak in the essence of Rome and offer a picturesque setting for outdoor relaxation and dining. Whether exploring the ancient wonders or savouring the local charm, Apartment Fulvia provides a comfortable and well-connected base for your Roman holiday.

Local Amenities

| | |
|-----------------------|---|
| Nearest Airport | Leonardo da Vinci International Airport (28 km) |
| Nearest Train Station | Circo Massimo (underground station) (2 km) |
| Nearest Restaurant | Bull Steak (100 m) |
| Nearest Bar/Pub | Lonely Avenue (2 km) |
| Nearest Supermarket | Todis - Supermercato (1 km) |
| Sightseeing | Mattatoio (2 km) |



What we love

- Apartment Fulvia is a spacious flat in the quiet San Saba neighbourhood, just 2 km from the Colosseum
- The property features modern interiors with large windows, two private terraces, and ample space for families or groups
- With three double bedrooms, a twin room, and additional sleeping options, it comfortably accommodates up to 10 guests

What you should know...

- The property's elevator is unsuitable for wheelchairs, and guests should be mindful of this limitation
- While centrally located, be aware of typical urban sounds and activities in the San Saba neighbourhood

Terms & Conditions

- **Security deposit:** €1,000 charged to client's credit card before arrival and refunded two weeks after departure, subject to full inspection.
- **Arrival time:** 16:00 - 20:00. Check-in outside this time may be subject to an extra cost. Please enquire for more details.
- **Departure time:** 08:00 - 10:00
- **Energy costs included?:** Yes, included in the rental price.
- **Linen & towels included?:** Yes, included in the rental price.
- **Pets welcome?:** Not allowed.
- **Changeover day:** Flexible.
- **End of stay cleaning:** Standard changeover clean included in the price. Guests are required to leave the accommodation clean, tidy and in the same condition as on their arrival. Any extra cleaning, laundry, maintenance and/or rubbish disposal required will be charged against the security deposit.
- **Smoking Allowed?:** Smoking & Vaping not permitted.
- **Minimum stay:** 3 nights. All other durations on request.
- **Heating costs included?:** Yes, included in the rental price.
- **Tax:** There is a city tax due to be paid locally which is not included in the rental rate. The amount will be confirmed by your onsite representative when you arrive.
- **Internet access?:** Wi-Fi internet connection included.