

# Apartment d'Arbois

Region: Megeve Sleeps: 7

---

## Overview

Apartment d'Arbois, a charming family retreat, is ideally located just a leisurely 15-minute stroll from the village centre of Megève. This well-appointed space, with its unique features like a dedicated kids' room and a terrace, can comfortably accommodate up to four adults and three children. The open layout seamlessly combines the kitchen and living areas, with soft natural tones and wooden accents creating a warm and inviting atmosphere. Amenities include a spacious dining area, high-grade kitchen appliances, and a cosy lounge with a flatscreen TV equipped with Netflix. These features, along with the enchanting terrace, ensure a restful stay for the entire family.

The chalet is available year-round, but facilities, property and local amenities may vary depending upon season.

## Winter | Ski Chalet

### December - April

During winter, Apartment d'Arbois transforms into a cozy haven for snow enthusiasts and families alike. Guests can easily access nearby ski slopes, ensuring a fun-filled winter getaway in the picturesque Megève region. After a day on the slopes, return to the warmth of the apartment, where you can enjoy family gatherings around the dining table or unwind on the plush sofas. The well-equipped kitchen, featuring a raclette machine and fondue appliance, is perfect for preparing hearty meals to warm you up after a day in the snow. The enchanting winter landscape provides a beautiful backdrop for enjoying the terrace, making it an ideal setting for evening relaxation under the stars.

## Summer | Alpine Chalet

### July - August

In the summer, Apartment d'Arbois serves as a refreshing escape, with the surrounding mountains offering many outdoor activities. Explore scenic hiking trails, enjoy mountain biking, or relax on the terrace while taking in the breathtaking views. The open and airy design of the apartment enhances the summer experience, allowing natural light to flood the living spaces. Families can gather around the large dining table for al fresco meals or enjoy coffee at the kitchen island as the sun shines through the windows. With comfortable accommodations and easy access to the vibrant village centre, Apartment d'Arbois is the perfect base for summer adventures in Megève.



## Facilities

Tennis Nearby • Bus/Shuttle To Slopes • Paragliding • Self-Catered • Skiing • Cycling • Watersports • Walking/Hiking Paths • Walk to Village • Ideal for Kids • Golf Nearby • Cots (Cribs) • Ideal for Teens • Special Offer • Has Discount • Great Value • Walk to Restaurant • Wi-Fi/Internet • Lakes and Mountains • Summer Chalet • Chalet Apartment • Washing Machine • Outstanding Landscapes • Coffee Machine • Outdoor Pursuit & Activities • Tourist Towns & Villages • TV • Lift • Garage • Tumble Dryer • Dishwasher • Microwave • Smart TV • Heating • Bathroom Toiletries • Ideal for Babies & Toddlers • High Chair(s)

# Interior & Grounds

## The Apartment

### Interior

- Lounge space with sofas, armchairs and TV with Netflix
- Dining area with table and chairs
- Fully-equipped kitchen with central island and additional seating, oven, hob, microwave, integrated fridge-freezer, raclette machine, fondue appliance, and a Nespresso coffee machine
- Bedroom with bunk bed (90 x 190), single bed (90 x 190) and TV
- Bedroom with double bed (160 x 200), wardrobe and ensuite bathroom with Italian shower, basin and towel dryer
- Bedroom with double bed (160 x 200), wardrobe and TV
- WC x 2
- Bathroom with bathtub, double basin and towel dryer

### Outdoor spaces

- Terrace
- Garage

### Additional Facilities

- WiFi
- Cot and highchair (available on request)
- Elevator
- Vacuum cleaner
- Netflix
- TV
- Microwave
- Fridge
- Freezer
- Raclette machine
- Fondue Appliances
- Iron and ironing board
- Nespresso coffee machine
- Electric hobs
- Kitchen exhaust hood
- Kettle
- Toaster
- Washing-drying machine



- Dishwasher
- Oven

# Location & Local Information

Nestled amidst the majestic French Alps, Apartment d'Arbois' location is a mere 1500 metres—or a leisurely stroll—away from the heart of Megève, one of the most prestigious ski resorts that embodies the quintessence of the French art of living. Megève is a captivating blend of authentic charm and discreet elegance, earning its moniker as the "Little Switzerland of the Alps." The alpine environment, perched at a mid-altitude, adds to its allure.

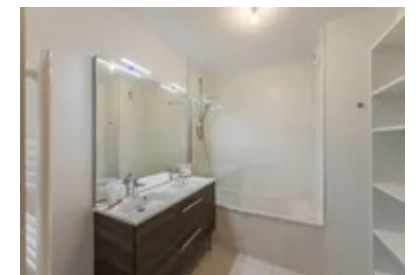
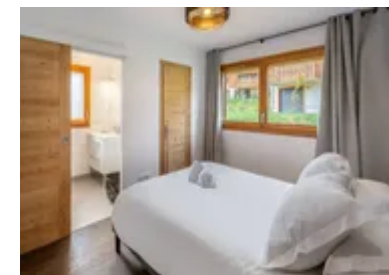
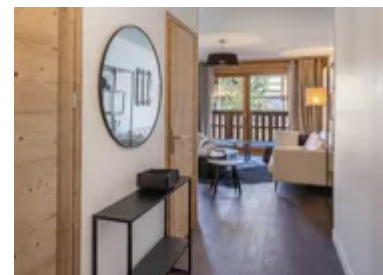
Beyond being a haven for winter sports enthusiasts, Megève is renowned for its gastronomy, offering culinary delights that tantalise the taste buds. Chic boutiques and upscale brands line the centre, providing a delightful shopping experience, while the ski area itself spans a vast 324 hectares, boasting a network of 400 kilometres of ski slopes. A winter wonderland, the slopes offer a captivating mix of mountain pastures, fir forests, and expansive open spaces, allowing visitors to truly feel lost in the mountains.

The jewel in Megève's crown is its picturesque village heart, where pedestrian streets converge around the legendary Place de l'Église. As night falls, the square transforms into a postcard vision—accentuated by a large fir tree adorned with Swarovski crystals, the illuminated facade of the Allard boutique, horse-drawn carriages, and the play of light on the church. It's a captivating scene that has enchanted lovers of Megève for decades.

For skiing enthusiasts, the apartment's proximity to the Chamois chairlift (1900 metres away) and the ski school (1700 metres away) offers convenient access to the slopes. The Le Chamois cable car, easily accessible from the pedestrian-friendly centre, acts as a gateway to the expansive ski area. From the wide, gently sloping slopes ideal for families to the challenging red and black slopes that beckon the more experienced, Megève caters to skiers of all levels. Apartment d'Arbois truly is a gateway to the enchanting world of Megève, where the charm of the village and the thrill of the slopes converge in perfect harmony.



All-Year Activities	Winter Activities	Summer Activities
<ul style="list-style-type: none"> <li>- Paragliding</li> <li>- Ice Skating</li> <li>- Mountaineering</li> <li>- Heritage Tours</li> <li>- Fitness Courses</li> <li>- Hot Air Balloon</li> <li>- Wine Tasting</li> </ul>	<ul style="list-style-type: none"> <li>- Skiing</li> <li>- Ski Off Piste</li> <li>- Ski Touring</li> <li>- Snowboarding</li> <li>- Cross Country Skiing</li> <li>- Ice Climbing</li> <li>- Dog Sledging</li> <li>- Snowshoeing</li> <li>- Aeroplane Tour</li> </ul>	<ul style="list-style-type: none"> <li>- Trekking and Hiking</li> <li>- Mountain Bike / eBike</li> <li>- Trail Running</li> <li>- Rock Climbing</li> <li>- Road Cycling</li> <li>- Water Sports</li> <li>- Golf / Mini-golf</li> <li>- Horse Riding</li> <li>- Adventure and Fun Parks</li> <li>- Tennis</li> <li>- Squash</li> <li>- Lake Swimming</li> <li>- Fishing</li> <li>- Paintballing</li> <li>- Quad Biking</li> <li>- Tree Adventure Course</li> <li>- Toboggan Ride</li> <li>- Canyoning</li> </ul>



## Local Amenities

Nearest Airport	<b>Geneva Airport (88.5 km)</b>
Nearest Airport 2	<b>Lyon Airport (174 km)</b>
Nearest Bar/Pub	<b>Le Hibou (1.6 km)</b>
Nearest City	<b>Geneva (70.6 km)</b>
Nearest Equipment Hire	<b>Intersport (1.8km)</b>
Nearest Ferry Port	<b>Port of Calais (887 km)</b>
Nearest Golf	<b>Golf du Mont d'Arbois (3.1 km)</b>
Nearest Lift	<b>Rochebrune (2.3 km)</b>
Nearest Piste	<b>Olympique (2.3 km)</b>
Nearest Restaurant	<b>L'Alpage (2 km)</b>
Nearest Shop	<b>Pains Bio Bakery (2.2 km)</b>
Nearest Ski Hire	<b>Intersport (1.8 km)</b>
Nearest Ski Lift	<b>Rochebrune (2.3 km)</b>
Nearest Tennis	<b>Megeve Tennis Club (2.1 km)</b>
Nearest Track	<b>Olympique (2.3 km)</b>
Nearest Train Station	<b>Sallanches (14.2 km)</b>
Nearest Village	<b>Megève (1.5 km)</b>
Nearest Supermarket	<b>Auchan Supermarché Megeve (3.4 km)</b>

## What we love

- We loved the stylish layout and design of Apartment d'Arbois
- The apartment's terrace was a wonderful spot for enjoying a mug of something hot while taking in the beautiful views
- It was wonderful to be located just a short stroll from the village centre and all it has to offer

## What you should know...

- Only one of the bedrooms has an ensuite bathroom
- One of the double rooms and the children's bedroom feature TVs for your entertainment
- A cot and highchair are available on request for the convenience of the youngest guests

# Terms & Conditions

- **Security deposit:** €3000 paid via bank transfer to the owner 30 days before arrival and refunded two weeks after departure, subject to full inspection.
- **Arrival time:** Check-in 5.00 PM
- **Departure time:** Check-out 10.00 AM
- **Energy costs included?:** Yes, included in the rental price
- **Linen & towels included?:** Yes, included in the rental price
- **Pets welcome?:** Not allowed
- **Changeover day:** Saturday
- **End of stay cleaning:** Standard changeover clean included in the price. Guests are required to leave the accommodation clean, tidy and in the same condition as on their arrival. Any extra cleaning, laundry, maintenance and/or rubbish disposal required will be charged against the security deposit.
- **Smoking Allowed?:** Smoking & Vaping are not permitted
- **Minimum stay:** 7 nights
- **Heating costs included?:** Yes, included in the rental price
- **Tax:** French Visitors Tax payable alongside balance (typically costs €1-€5 per adult per night- please enquire if exact amount is required)
- **Internet access?:** Wi-Fi internet access included

**The chalet is available year-round, but facilities, property and local amenities may vary depending upon season.**