

Chalet Eclipse

Region: 3 Valleys Sleeps: 10

Overview

Situated in the charming village of Courchevel le Praz, Chalet Eclipse is a true gem that seamlessly blends modern luxury with the authenticity of Alpine living. Boasting a prime location, this exceptional chalet is within arm's reach of shops, restaurants, and ski lifts, making it an ideal haven for unforgettable holidays with family or friends.

Eclipse is not just a chalet; it's an experience spread across 400 square metres over four levels. With a capacity to comfortably accommodate 14 to 16 guests, this chic property features six spacious bedrooms, each equipped with its own private bathroom and toilet. Among them, a family bedroom stands out, offering a perfect blend of cosiness with a double bed and two single beds - perfect for parents with younger children. The master bedroom, with its dressing room, adds a touch of opulence to the nights spent in this sumptuous chalet.

In keeping with traditional Alpine architecture, Chalet Eclipse emanates a trendy and warm ambience. The sublime living room, adorned with a fully equipped open kitchen, a large dining table, and a magnificent living space, showcases refined decor and generous volumes that invite relaxation.

Elevating the chalet experience, an entertainment area beckons, housing a games room and a video room with a giant screen that can also serve as additional sleeping quarters for two. The chalet's southern exposure ensures abundant sunshine, allowing guests to bask in nature's glory on the beautiful outdoor terrace - a beautiful spot for enjoying a morning cuppa while taking in the incredible views.

For wellness enthusiasts, Chalet Eclipse offers a



grandiose wellness area featuring a splendid swimming pool, a sauna, and a massage room exuding a serene atmosphere. After conquering the 600 kilometres of the 3 Valleys slopes, a dedicated ski room simplifies the end of your adventurous day.

Chalet Eclipse is not just about luxury; it's about thoughtful details. From the ski locker and shoe warmers to the convenience of a garage and the practicality of outdoor furniture, every element is designed to enhance your stay. Though there's no elevator, the Eclipse compensates with a homely atmosphere and an unforgettable Alpine experience.

In every corner, Chalet Eclipse whispers of comfort, elegance, and the promise of cherished memories in the heart of the French Alps.

Facilities

Self-Catered • Ski Lift Nearby • Bus/Shuttle To Slopes • Walk To Slopes • Lakes and Mountains • Washing Machine • Coffee Machine • Wellness • Ski Chalet • Hairdryer • Ideal for Xmas/NY • Paragliding • Skiing • Spa/Massage • Ski-In/Ski-Out • Walking/Hiking Paths • Wi-Fi/Internet • TV • Walk to Village • Garage • Wow Factor • Cots (Cribs) • Maid Service Included • Rural Location • Instagrammable • Modern • Ski Locker • Breakfast Included • Bathroom Toiletries • Ideal for Babies & Toddlers • Ideal for Kids • Ideal for Teens • Walk to Restaurant • Tumble Dryer • Dishwasher • Microwave • Electric Car Charger • Safety Deposit Box • Smart TV • Sauna/Steam • Working Fireplace/Woodburner • Heating • High Chair(s) • Parking Space • Outstanding Landscapes • Outdoor Pursuit & Activities • Tourist Towns & Villages

Interior & Grounds

The Chalet

Interior

Ground floor

- Leisure area with indoor pool, sauna, massage room, movie room, Italian shower
- Garage
- Ski room
- Laundry room
- WC

First floor

- Bedroom with double bed (180 x 200 - can be separated in two singles), dressing room, TV, terrace and ensuite bathroom with Italian shower, double basin, toilet and towel dryer
- Bedroom with double bed (90 x 200 - can be separated into two singles), dressing room, TV, terrace and ensuite bathroom with bathtub, Italian shower, basin, toilet and towel dryer
- Bedroom with double bed (90 x 200 - can be separated into two singles), 2 x single trundle bed (90 x 180), dressing room, TV, terrace and ensuite bathroom with bathtub, Italian shower, basin, toilet and towel dryer
- Bedroom with double bed (90 x 200 - can be separated into two singles), dressing room, armchair, TV, terrace and ensuite bathroom with Italian shower, double basin, toilet and towel dryer

Second floor

- Bedroom with double bed (90 x 200 - can be separated into two singles), dressing room, armchair, TV, balcony and ensuite bathroom with Italian shower, basin, toilet and towel dryer
- Bedroom with double bed (90 x 200 - can be separated into two singles), dressing room, armchair, TV, balcony and ensuite bathroom with Italian shower, basin, toilet and towel dryer
- Bedroom with double bed (180 x 200), dressing room, TV, balcony



- WC
- Bathroom with bathtub, Italian shower, double basin, toilet and towel dryer

Third floor

- Lounge space with sofas, fireplace and TV
- Dining area with table and chairs
- Reading area
- Fully-equipped kitchen with breakfast bar and additional seating, oven, hob, kettle, Nespresso coffee machine, fridge/freezer
- Wine cellar

Outdoor spaces

- Balconies
- Terrace
- Garage

Additional Facilities

- WiFi
- Books
- Shoe warmers
- Ski locker
- Iron
- Wood fireplace
- Parking space
- Safe
- Hairdryer
- Electric car charger
- Baby cot
- High chair
- TV
- Coffee machine
- microwave
- fridge
- freezer
- Raclette machine
- Fondue appliances
- Vacuum
- Ironing board
- Mixer
- Kitchen exhaust hood
- Kettle
- Toaster

- Kitchen robot
- Refrigerated wine cellar
- Induction hobs
- Dishwasher
- Washing machine
- Dryer
- Oven

Location & Local Information

Courchevel le Praz, a picturesque village nestled on a vast plateau, beckons lovers of tranquillity and the sweet rhythm of life. Tucked in close proximity to the enchanting forests of Courchevel, this alpine haven stands at an altitude of 1,300 metres, revealing a discreet charm and an inviting peaceful side that captivates visitors. Majestic peaks like the Dent du Villard and the Grand Bec provide a stunning backdrop to this unique village, where chalets and narrow streets promise a delightful change of scenery.

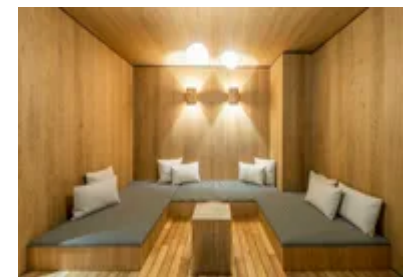
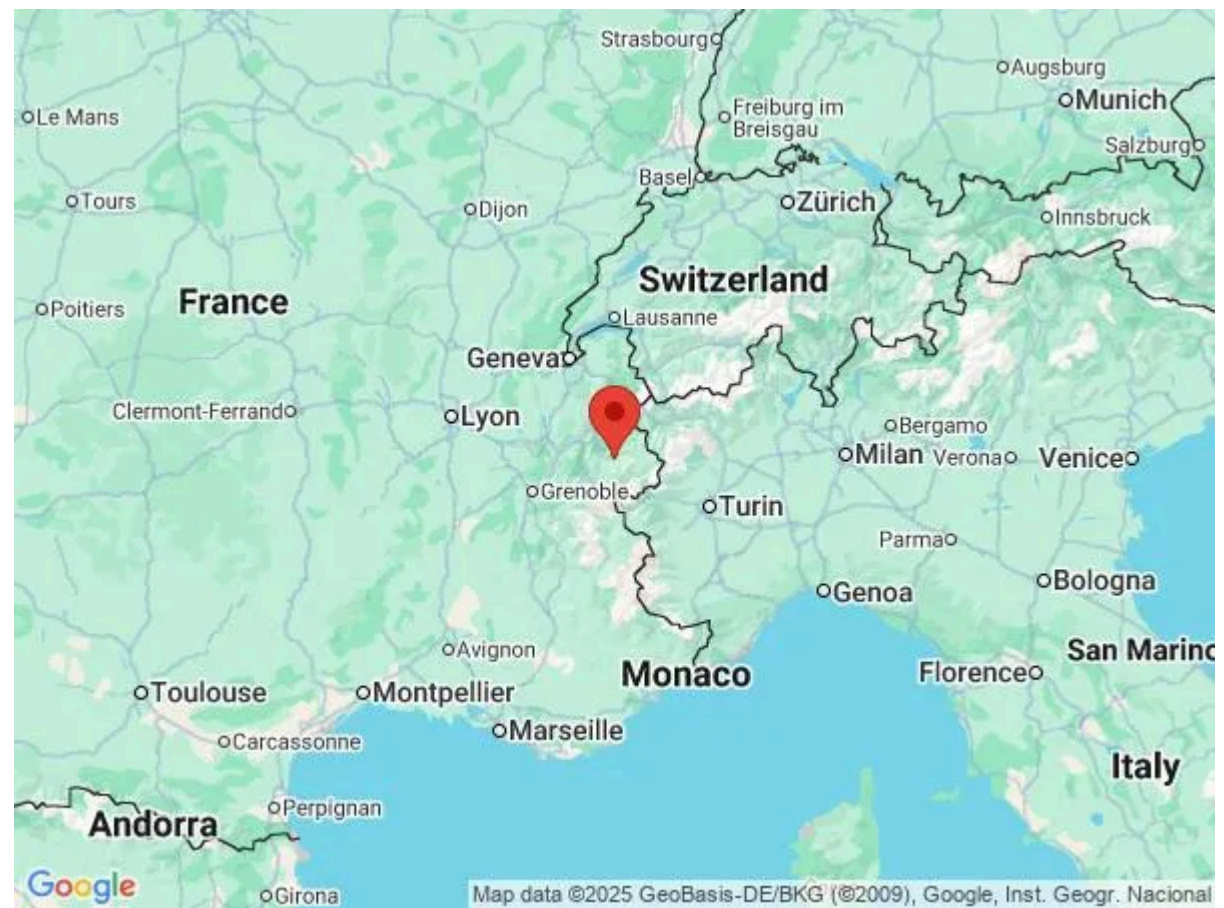
Chalet Eclipse, with its prime location just 200 metres from the village centre, offers a strategic gateway to the vast skiing wonders of the region. A mere 400 metres away from the lifts and the Alpinium lift, it provides easy access to the Front de Neige du Praz, ensuring that the slopes are practically at your doorstep.

Courchevel le Praz is not just a winter wonderland; it's a lively hub with a vibrant après-ski scene. As skiers return, the snowfront comes alive with energy, offering a perfect setting to prolong the day's pleasures. The village is dotted with excellent restaurants serving delectable Savoyard specialties, allowing you to sample the flavours of the region.

For those seeking adventure beyond the slopes, the Praz Olympic springboard stands as a testament to the village's rich history. Built for the 1992 Olympic Games and still in use, this unique installation is a rare find in France, hosting Olympic ski jumping events that add a touch of excitement to the charming ambience of Courchevel le Praz.

Courchevel le Praz is not just a destination; it's an experience. With Chalet Eclipse as your luxurious base, you're not just visiting a location – you're immersing yourself in the beauty, culture, and excitement of one of the most enchanting corners of the French Alps.

Local Amenities



Nearest Airport	Geneva Airport (180 km)
Nearest Airport 2	Lyon Airport (221 km)
Nearest Ferry Port	Port de Calais (961 km)
Nearest Train Station	Moûtiers (16.6 km)
Nearest City	Geneva (178 km)
Nearest Village	Courchevel Le Praz (400 m)
Nearest Piste	Jean Blanc (20 m)
Nearest Ski Lift	Le Praz (500 m)
Nearest Ski Hire	Location ski Courchevel 1300 (450 m)
Nearest Restaurant	Restaurant Le Bistrot du Praz (550 m)
Nearest Bar/Pub	La Table de mon Grand Père (500 m)
Nearest Supermarket	L'Épicerie du Praz (500 m)
Nearest Shop	Au Pain D'Abtan Le Praz Bakery (450 m)

What we love

- Chalet Eclipse's spacious interior makes it the ideal accommodation choice for large friendship groups, or two or more families holidaying together
- The chalet features an array of wellness facilities to enjoy, including an indoor pool, a sauna, and even a movie room
- Chalet Eclipse's location puts guests right at the centre of the action, situated just 200m from the village centre

What you should know...

- Chalet Eclipse does not have elevator access
- Some of the double beds can be separated into singles if required
- Some household and laundry services are only available during the winter months

Terms & Conditions

- **Security deposit:** €5000 paid via bank transfer to the owner 30 days before arrival and refunded two weeks after departure, subject to full inspection.
- **Arrival time:** Check-in 5.00 P.M.
- **Departure time:** Check-out 10.00 A.M.
- **Energy costs included?:** Yes, included in the rental price.
- **Linen & towels included?:** Yes, included in the rental price.
- **Pets welcome?:** Not allowed.
- **Changeover day:** Saturday.
- **End of stay cleaning available?:** Yes. However, guests are required to leave the accommodation clean, tidy and in the same condition as on their arrival. Any extra cleaning, laundry, maintenance and/or garbage disposal required will be charged against the security deposit.
- **Smoking Allowed?:** Smoking & Vaping are not permitted.
- **Minimum stay:** 7 nights.
- **Heating costs included?:** Yes, included in the rental price.
- **Tax:** French Visitors Tax payable alongside balance (typically costs €1-€5 per adult per night- please enquire if exact amount is required).
- **Internet access?:** Wi-Fi internet access included.