

Apartment Le Praz 2

Region: 3 Valleys Sleeps: 6

Overview

Located in the heart of the enchanting village of Courchevel Le Praz, Apartment le Praz 2 beckons with the allure of mountain-style architecture seamlessly blended with contemporary comforts. Set on the first floor of the residence, this 84m² haven boasts a serene atmosphere, offering the quintessential ski apartment experience you've been yearning for.

As you step inside, the open and well-equipped kitchen warmly invites you, seamlessly merging with the dining area and the cosy living room. The thoughtful layout ensures that culinary endeavours are not just a task but a shared experience, with the aroma of delicious meals filling the air and mingling with the laughter of friends and family.

Accommodating up to six guests, Apartment le Praz 2 features a double bedroom complete with an en-suite bathroom, ensuring a retreat of tranquillity and relaxation. A second equally inviting double bedroom and a flexible double (or twin) bedroom, provide versatile sleeping arrangements to suit your preferences, while a well-appointed bathroom and a separate toilet add to the convenience of this alpine escape.

Practicality meets luxury with the inclusion of a dedicated ski room, ensuring that your gear is effortlessly organised for the next day's adventure. Two covered parking spaces further enhance the convenience, offering a hassle-free start to your day in this snow-covered wonderland.

For avid skiers, the proximity to the Praz gondola is a game-changer, whisking you to Courchevel 1850 in a mere six minutes. In addition, the quaint streets of Le Praz also await, adorned with charming shops and welcoming



restaurants, creating the perfect backdrop for leisurely après-ski strolls.

Facilities

Ski-In/Ski-Out • Ski Lift Nearby • Bus/Shuttle To Slopes • Walk To Slopes
• Lakes and Mountains • Coffee Machine • Hairdryer • Paragliding • Self-Catered • Skiing • Walking/Hiking Paths • Wi-Fi/Internet • TV • Cots (Cribs) • Walk to Village • Rural Location • Modern • Chalet Apartment • Bathroom Toiletries • Ideal for Babies & Toddlers • Ideal for Kids • Ideal for Teens • Walk to Restaurant • Microwave • Heating • High Chair(s) • Parking Space • Outstanding Landscapes • Outdoor Pursuit & Activities • Tourist Towns & Villages

Interior & Grounds

The Apartment

Interior

- Lounge space with sofas and TV
- Dining area with table and chairs
- Fully-equipped kitchen with breakfast bar and additional seating, integrated oven, microwave, hob and coffee machine
- Bedroom with double bed (160 x 200 - can be separated into 2 singles), cupboard, shelves, wardrobe and ensuite bathroom with shower, basin, toilet, hairdryer and towel dryer
- Bedroom with double bed (160 x 200 - can be separated into 2 singles), cupboard, shelves, wardrobe, balcony
- Bedroom with double bed (160 x 200 - can be separated into 2 singles), cupboard, shelves, wardrobe
- WC
- Bathroom with bathtub, double basin, hairdryer, towel dryer

Outdoor spaces

- Balcony
- Parking space x 2

Additional Facilities

- Wifi (additional fee)
- TV
- Microwave
- Oven
- Coffee machine
- Electric hobs
- Cot and highchair on request



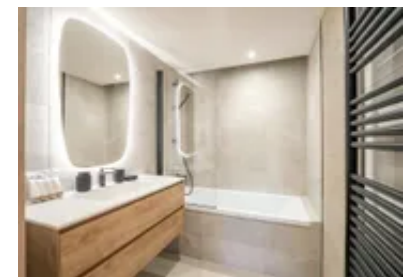
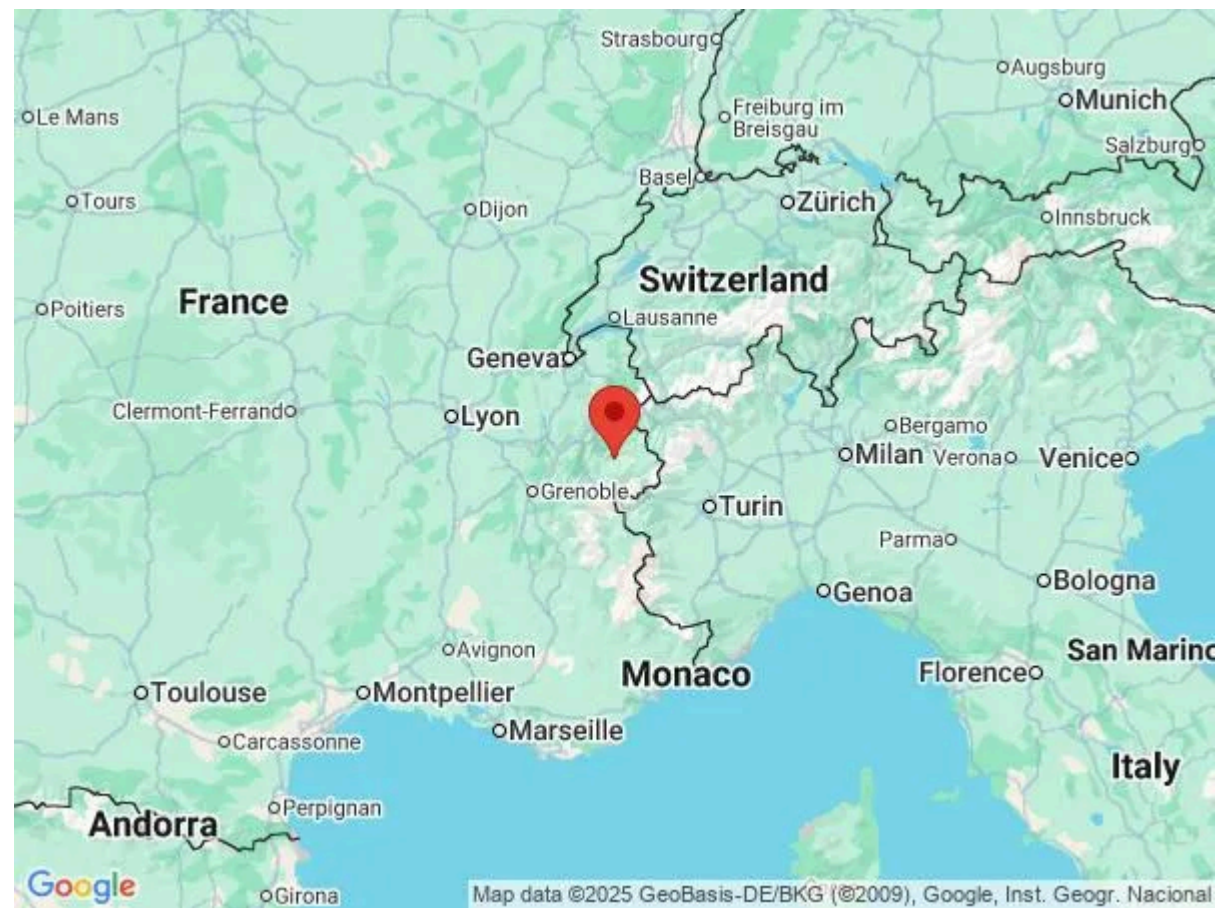
Location & Local Information

Tucked away in the picturesque village of Courchevel Le Praz, just a leisurely 250 metres from the bustling centre, Apartment le Praz 2 offers an idyllic retreat surrounded by the natural beauty of the Courchevel forests. Situated on a vast plateau at an altitude of 1,300 metres, this charming village embodies tranquillity and the sweet essence of mountain life, with the majestic peaks of Dent du Villard and Grand Bec casting a breathtaking backdrop.

From the doorstep of the apartment, a short 450-metre stroll unveils the Le Praz cable car and La Forêt chairlift, serving as gateways to the expansive winter wonderland that is Courchevel 1850. The strategic location ensures effortless access to the largest ski area globally, with the closest track, Jean Blanc, beckoning just 200 metres away. As you embark on your skiing escapades, Apartment le Praz 2 stands as the perfect launchpad, marrying convenience with alpine charm.

Courchevel Le Praz takes pride in its commitment to preserving mountain and Savoyard traditions, evident in the quaint chalets and narrow streets that promise a change of scenery at every turn. The village, perched on the edge of the Courchevel forests, reveals a discreet charm and a particularly pleasant, peaceful side. As the sun dips below the peaks, the neighbourhood comes alive during après-ski, with the snow front buzzing as skiers return to prolong their pleasures. Culinary delights await, as Courchevel Le Praz boasts excellent restaurants serving up Savoyard specialties, offering the perfect finale to your day on the slopes.

A fascinating nugget of history lies in the presence of the Praz Olympic springboard, a unique relic from the 1992 Olympic Games. Still in use, this iconic installation stands as a testament to the village's rich sporting heritage, providing a unique backdrop to your alpine adventure. In Courchevel Le Praz, Apartment le Praz 2 not only invites you into its cosy embrace but also immerses you in the enchanting rhythm of mountain life and the thrill of the slopes.



Local Amenities

Nearest Airport	Geneva Airport (180 km)
Nearest Airport 2	Lyon Airport (221 km)
Nearest Ferry Port	Port de Calais (961 km)
Nearest Train Station	Moûtiers (16.4 km)
Nearest City	Geneva (178 km)
Nearest Village	Courchevel Le Praz (250 m)
Nearest Piste	Jean Blanc (200 m)
Nearest Ski Lift	Le Praz Gondola - La Forêt Chairlift (450 m)
Nearest Ski Hire	Location ski Courchevel 1300 (400 m)
Nearest Restaurant	Restaurant Le Bistrot du Praz (500 m)
Nearest Bar/Pub	La Table de mon Grand Père (450 m)
Nearest Supermarket	L'Épicerie du Praz (450 m)
Nearest Shop	Au Pain D'Abtan Le Praz Bakery (400 m)

What we love

- It was wonderful to have the option of double or twin beds in some of the bedrooms
- We loved the cosy, homely feel of Apartment le Praz 2
- The apartment's balcony was the perfect spot for taking in the mountain air with a mug of something hot

What you should know...

- Not all of the bedrooms have ensuite bathrooms
- The apartment is situated close to the slopes
- Apartment le Praz 2 is not suitable for guests with reduced mobility

Terms & Conditions

- **Security deposit:** Secure link sent to the client's email to fill in the details of the client's bank card online 2 weeks before the arrival for the amount of €1500. Funds won't be taken or blocked on the credit card in this case.
- **Arrival time:** Check-in 5.00 P.M.
- **Departure time:** Check-out 10.00 A.M.
- **Energy costs included?:** Yes, included in the rental price.
- **Linen & towels included?:** Yes, included in the rental price.
- **Pets welcome?:** Not allowed.
- **Changeover day:** Saturday.
- **End of stay cleaning available?:** Yes. However, guests are required to leave the accommodation clean, tidy and in the same condition as on their arrival. Any extra cleaning, laundry, maintenance and/or garbage disposal required will be charged against the security deposit.
- **Smoking Allowed?:** Smoking & Vaping are not permitted.
- **Minimum stay:** 7 nights.
- **Heating costs included?:** Yes, included in the rental price.
- **Tax:** French Visitors Tax payable alongside balance (typically costs €1-€5 per adult per night- please enquire if exact amount is required).
- **Internet access?:** Wi-Fi internet access not included, please enquire for exact amount.