

Apartment Le Praz 3

Region: 3 Valleys Sleeps: 6

Overview

Apartment Le Praz 3 is a picturesque garden-level apartment situated in the charming village of Courchevel Le Praz. Seamlessly blending the allure of traditional mountain architecture with contemporary comforts, this tranquil three bedroom haven offers the quintessential ski apartment experience for up to six guests.

Spanning 86 square metres, the apartment features a light, neutral decor throughout, and showcases a modern, open-plan design. The cosy lounge area is complete with sumptuous seating and a TV for your entertainment, while the adjacent dining space with table and chairs offers ample room for intimate indoor meals. This delightfully well-appointed space also features a well-equipped kitchen bursting with high-end appliances including an oven and induction hobs, microwave, Nespresso coffee machine, fridge and a dishwasher.

Apartment Le Praz 3's master bedroom includes a double bed and an en-suite bathroom, ensuring a touch of privacy and luxury for guests. A second double bedroom and a versatile third bedroom, easily adaptable between a double or twin arrangement, share a thoughtfully designed bathroom and a separate toilet, making it easy to cater to the needs of every guest.

Convenience meets style with the inclusion of a ski room, providing a dedicated space for storing equipment after exhilarating days on the slopes, and a covered parking space adds a practical touch, ensuring hassle-free arrivals and departures for those who want to make use of a vehicle during their stay. In addition, a washing machine is included, ensuring that every aspect of your stay is characterised by comfort and convenience.

Skiers are in for a treat with the Praz gondola just a stone's



throw away, whisking them to the renowned Courchevel 1850 in a mere six minutes. After conquering the expansive slopes of the 3 Valleys, Apartment le Praz 3 beckons you back to its serene confines and the enchanting streets of Le Praz. The village's inviting shops and amiable restaurants make for delightful après-ski strolls, adding a touch of warmth to your alpine retreat.

Facilities

Self-Catered • Ski Lift Nearby • Bus/Shuttle To Slopes • Walk To Slopes • Paragliding • Skiing • Ski-In/Ski-Out • Walking/Hiking Paths • Walk to Village • Ideal for Kids • Ideal for Teens • Modern • Walk to Restaurant • Parking Space • Lakes and Mountains • Chalet Apartment • Rural Location • Washing Machine • Outstanding Landscapes • Coffee Machine • Outdoor Pursuit & Activities • Tourist Towns & Villages • TV • Tumble Dryer • Dishwasher • Microwave • Heating • Ski Locker • Ideal for Babies & Toddlers

Interior & Grounds

The Apartment

Interior

- Lounge area with sofas and TV
- Dining area with table and chairs
- Fully-equipped kitchen with kettle, induction hobs, oven, Sodastream, dishwasher, microwave, fridge, freezer
- Bedroom with double bed and ensuite bathroom with double Italian shower, basin, toilet
- Bedroom with double bed and TV
- Bedroom with double bed (can be separated into 2 single beds)
- WC
- Bathroom with shower and basin

Outdoor spaces

- Parking space

Additional facilities

- Ski room
- Washing machine
- SONOS speaker
- Microwave
- Fridge
- Freezer
- Coffee machine
- Kitchen exhaust hood
- Kettle
- Sodastream
- Induction hobs
- Dishwasher
- Washing machine
- Dryer
- Oven



Location & Local Information

Perched at an altitude of 1,300 metres, Courchevel Le Praz beckons winter enthusiasts with its discreet charm and tranquil ambiance. Nestled on a vast plateau and surrounded by the enchanting forests of Courchevel, this village, just 250 metres from the resort centre, promises a unique alpine experience, embracing the serene beauty of the Dent du Villard and the majestic Grand Bec.

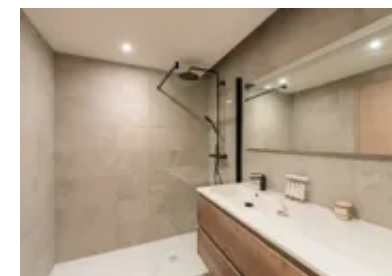
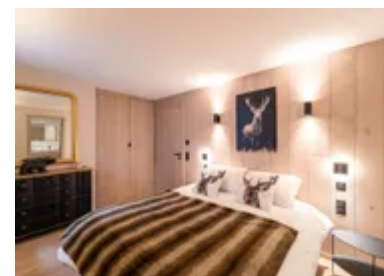
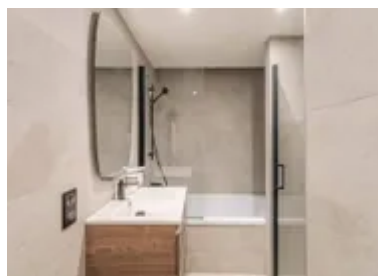
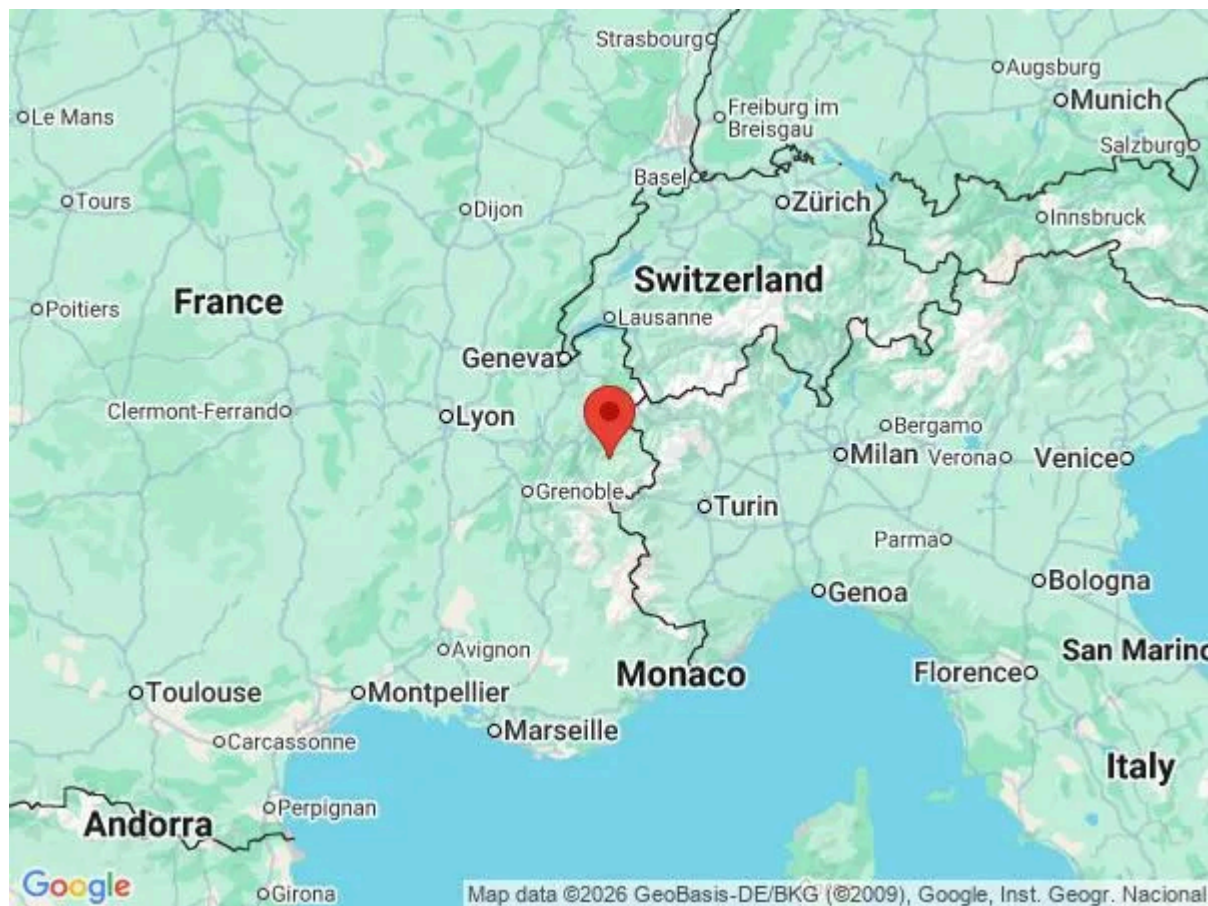
The strategic location of Courchevel Le Praz unfolds as a gateway to a winter wonderland. Merely 450 metres away, the Le Praz cable car and La Forêt chairlift offer seamless access to the expansive slopes of Courchevel 1850, the highest village in the resort. As you embark on your alpine adventure, the closest track, Jean Blanc, awaits just 200 metres from your doorstep, promising endless descents on the world's largest ski area.

Beyond the thrill of skiing, Courchevel Le Praz is not just a haven for winter sports enthusiasts. The village comes alive at après-ski, with the snow-front buzzing with energy as skiers return to extend their alpine pleasures. Culinary delights await, as Courchevel Le Praz boasts excellent restaurants serving up savoury Savoyard specialties, perfect for rounding off a day of exhilarating adventures on the slopes.

The renowned Praz Olympic springboard, a relic from the 1992 Olympic Games, still stands proudly in this region, and is actively used. This unique installation, the only one of its kind in France, adds a touch of Olympic history to the charm of Courchevel Le Praz, making it not just a destination for skiing but a captivating journey through time and tradition.

Local Amenities

Nearest Airport	Geneva Airport (180 km)
Nearest Airport 2	Lyon Airport (221 km)



Nearest Ferry Port	Port de Calais (961 km)
Nearest Train Station	Moûtiers (16.6 km)
Nearest City	Geneva (178 km)
Nearest Village	Courchevel Le Praz (400 m)
Nearest Piste	Jean Blanc (20 m)
Nearest Ski Lift	Le Praz (500 m)
Nearest Ski Hire	Location ski Courchevel 1300 (450 m)
Nearest Restaurant	Restaurant Le Bistrot du Praz (550 m)
Nearest Bar/Pub	La Table de mon Grand Père (500 m)
Nearest Supermarket	L'Épicerie du Praz (500 m)
Nearest Shop	Au Pain D'Abtan Le Praz Bakery (450 m)

What we love

- We loved the cosy, homely interior of Apartment le Praz 3
- The apartment's open-plan layout meant we could relax, cook and dine together all in one space
- It was wonderful to be located just a couple of hundred metres from the slopes

What you should know...

- Only one of the bedrooms has an ensuite bathroom
- One of the double beds can be separated into two singles
- The apartment is not suitable for guests with reduced mobility

Terms & Conditions

- **Security deposit:** Secure link sent to the client's email to fill in the details of the client's bank card online 2 weeks before the arrival for the amount of €1500. Funds won't be taken or blocked on the credit card in this case.
- **Arrival time:** Check-in 5.00 P.M.
- **Departure time:** Check-out 10.00 A.M.
- **Energy costs included?:** Yes, included in the rental price.
- **Linen & towels included?:** Yes, included in the rental price.
- **Pets welcome?:** Not allowed.
- **Changeover day:** Saturday.
- **End of stay cleaning available?:** Yes. However, guests are required to leave the accommodation clean, tidy and in the same condition as on their arrival. Any extra cleaning, laundry, maintenance and/or garbage disposal required will be charged against the security deposit.
- **Smoking Allowed?:** Smoking & Vaping are not permitted.
- **Minimum stay:** 7 nights.
- **Heating costs included?:** Yes, included in the rental price.
- **Tax:** French Visitors Tax payable alongside balance (typically costs €1-€5 per adult per night- please enquire if exact amount is required).
- **Internet access?:** Wi-Fi internet access not included, please enquire for exact amount.