

Chateau Coraline

Region: France Sleeps: 47

Overview

The stunning Château Coraline and its eight acres of grounds represents the epitome of French elegance and style in the heart of the world-famous Sancerre wine region. By preserving this gem's history while tastefully decorating with chic, contemporary touches and mid-century interiors, Château Coraline is a testament to the French art of living.

Last rebuilt by Napoleon's Minister of the Interior in 1800 for his daughter, guests entering Château Coraline will marvel at the results of a two-year renovation that has resulted in a breathtaking blend of heritage charm and sleek modern taste. This truly is a timeless masterpiece contained within historic walls – guests can expect 200-year old oak floors and 19th century furnishings alongside 1960s Murano chandeliers, mid-century velvet sofas and stylish mirror tables.

With 1,500m² of living space spread over three floors, including four living rooms, an opulent dining room, expansive kitchen, several majestic staircases, dancing cellar and a farmhouse annexe featuring a large exercise space, this is a château with charm and character in every inch of floorspace. Boasting 24 bedrooms, most featuring queen-sized beds, and 22 bathrooms, Château Coraline graciously accommodates up to 47 guests. There are flexible rates for smaller groups wishing to stay in fewer bedrooms in this beautiful abode.

Eight acres of enclosed grounds are verdant with bicentennial trees and meandering walking trails – not to mention the 25m-long saltwater swimming pool (heated) built into natural stone. Hidden away in a small grove not far from the pool guests will also find a sauna and outdoor Nordic bath, both wood fired.



The ancient hilltop village of Sancerre is just a 5-minute drive away with its cobbled lanes, inviting restaurants, wine-bars, Saturday morning market and glorious views of the surrounding Sancerre vineyards. Near the banks of the Loire, Saint-Satur is another idyllic spot and the perfect place for canoeing and kayaking alongside cycle rides following the Loire à Vélo.

Even closer to home is the Loire canal and its cycling/walking towpath where you can admire the historic system of bridges and locks, ending perhaps with a hearty meal at the traditional French inn overlooking the canal only 1km away.

As well as wine-tasting across Sancerre, Pouilly Fumé and Ménétoû Salon wineries, visit pretty riverside villages and historic towns such as La Charité-sur-Loire, Apremont-sur-Allier, Nevers and Orléans. You could even venture to Burgundy with Vézelay around 86km by car or consider spending the day in Paris which is only 1 hour 50 minutes by train!

Facilities

Tennis Nearby • Ideal for Kids • Romantic • Walk to Village • Walking/Hiking Paths • Horse Riding • Private Pool • Canoeing/Kayaking • Wine Tasting • Historical Sites • Cycling • Golf Nearby • Chateaux & Castles • Wellness • Weddings • Special Offer • Dry Hire Option • Ideal for Teens • Marquee Hire Permitted • Has Discount • Maid Service Available • Cots (Cribs) • Chef/Cook Available • Heated Pool • Instagrammable • Saltwater Pool • Ground Floor Bed & Bath • Flexible Catering Options • Parking Space • Allow Ceremonial Fire • Pool Safety Feature • Wi-Fi/Internet • Allow External Caterers • Rural Location • No Corkage • No Curfew • Nearby Church/Chapel • Outstanding Landscapes • Outdoor Pursuit & Activities • Tourist Towns & Villages • TV • Laptop Friendly Workspace • Gym/Fitness Room • Hot Tub • Sauna/Steam • Fire Pit • Heating • Caretaker/Owner on Site • Amusement park • Transfers Available • Catering Available • Breakfast Included • Ideal for Babies & Toddlers • High Chair(s)

Interior & Grounds

Château Interiors

- Four living rooms
- Library
- Dining room
- Kitchen
- Dancing cellar
- Annexe farmhouse with large fitness/meeting room



Château Bedrooms

Bedrooms are mostly on the first and second floor (there is one bedroom on the ground floor)

- 22 x bedrooms with queen-size double bed
- Bedroom with single bed

Annexe Bedroom (within the parkland)

- Ground-level bedroom

Across the château/annexe there are 22 bathrooms with bath and/or shower (20 en suite)

Outside Grounds

- Heated salt-water swimming pool (25x5m, depth: 1.2-2.3m) with safety cover. Open approximately April to early October (pool heating included approximately end-April to early October)
- Poolside deckchairs on lawn
- Wood-fired sauna and outdoor Nordic bath (within woodland)
- Outdoor brasero
- 3-hectare parkland
- Tree-lined trails

Facilities

- Wi-Fi
- TV
- Wood-burning sauna and Nordic bath
- Fitness/meeting space
- Toys and play equipment



Location & Local Information

In the Loire valley, Château Coraline is surrounded by world-famous vineyards just a 5-minute drive from the pretty wine village of Sancerre. The beautiful abode is set within eight acres of wooded grounds, located within the Cher department (near the Nièvre border) and close to the Loire River.

The canal is ideal for cycle rides and long walks as you admire its 300-year old system of locks and bridges. Activity lovers also note there are glorious hiking trails through the surrounding vineyards, golf course and tennis within a short drive and horse-riding in the region.

The ancient hilltop village of Sancerre (4km) is a joy to discover with its picturesque narrow lanes, charming houses, inviting shops, restaurants and wine-bars of course. Learn all about Sancerre's wine heritage at the interactive Maison des Sancerre and experience gastronomic delights of the region at the Saturday morning market – make sure you try the local goat's cheese (Crotton de Chavignol) that dates back to the 1700s. From the village the views of the surrounding vineyards are wonderful.

The next village, Saint-Satur (4km), hosts a wonderful market on a Thursday morning (and a weekly summer evening market in the height of the summer by the river). Find seasonal canoeing and kayaking along the Loire whilst cyclists should follow the *Loire à Vélo* which passes by (part of the Nevers to Orléans section of this fantastic cycling route).

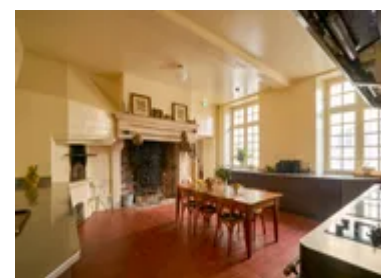
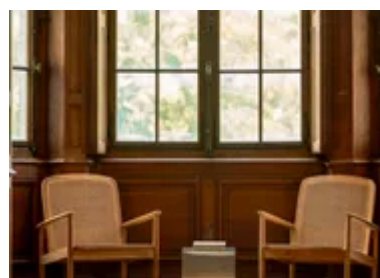
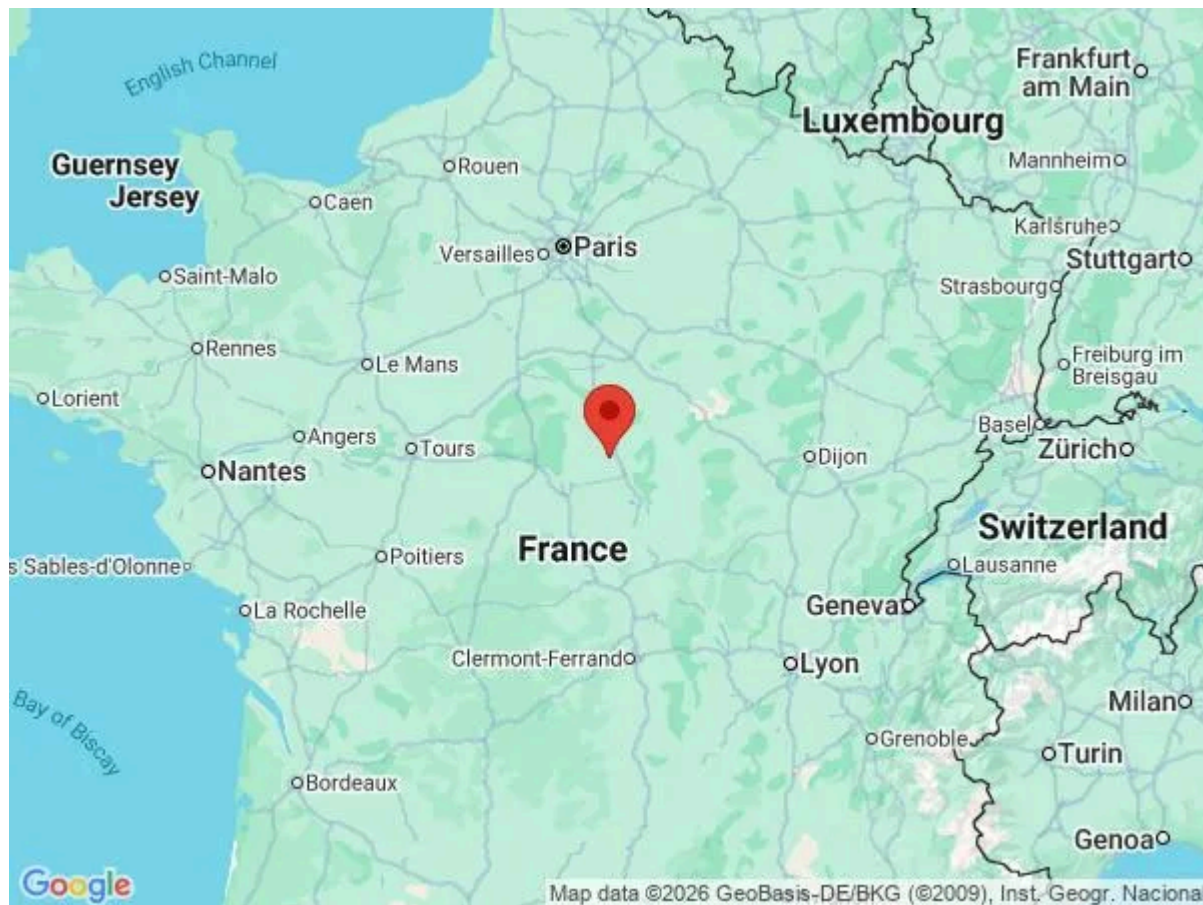
Visit the wineries around Sancerre and head a little further afield towards the vineyards producing Pouilly Fumé and Ménéteau Salon wines within half an hour. You could even venture to Burgundy with Vézelay (86km), one of France's 'Plus Beaux Villages' and home to Vézelay Abbey, a UNESCO World Heritage site.

Back to the Loire River, La Charité-sur-Loire (20km) attracts visitors thanks to its historic church. Then there's Apremont-sur-Allier (52km), another one of France's most beautiful villages and home to the incredible gardens of Château d'Apremont-sur-Allier. Other brilliant days out include the historic towns of Nevers (46km), Bourges (49km) and even Orléans (110km).

Château Coraline is directly south of Paris (200km) and the nearest airports are Aéroport Orléans Loire-Valley (100km) and Paris Orly (195km). If arriving by train, Gare Tracy Sancerre (5km) is less than a 2-hour journey direct from Paris Bercy on the SNCF train (some guests even cycled from the train station in the past).

Local Amenities

Nearest Airport	Aéroport Orléans Loire-Valley (100km)
Nearest Airport 2	Paris Orly (195km)
Nearest Train Station	Gare Tracy Sancerre (5km)



Nearest Restaurant	Sancerre (5km)
Nearest Village	Small rural village (200m)
Nearest Shop	Sancerre (small supermarket, bakery etc) (4km)
Nearest Town/City	Bourges (49km)
Nearest Golf	Golf de Sancerre (5km)

What we love

- This beautiful Chateau offers complimentary breakfast, so guests can avoid lifting a finger before noon!
- Such a beautiful restoration of this 18th century château near Sancerre with elegant style and mid-century décor
- Discover the wood-fired outdoor hot-tub and sauna alongside the heated swimming pool and woodland trails amidst the bicentennial trees
- The picture-perfect villages of Sancerre and Saint-Satur are a 5-minute drive away, surrounded by some of France's finest vineyards
- Cycle or walk along the Loire canal admiring the 300-year old system of locks and bridges
- The Loire River also awaits for canoeing/kayaking and the famous cycling route, Loire à Vélo

What you should know...

- There are 23 bedrooms in the château and one bedroom in an annexe within the parkland. Two of the bedrooms (including the annexe bedroom) are on the ground floor (please request if needed).
- Please note that pricing for stays between 2-6 nights will be on request.
- Lower prices for partial privatisation of the Chateau may be available on request - please enquire for more information.
- The château concierge lives in an annexe within the parkland – they are discreet yet available for guidance and assistance if needed. They can also help arrange optional services (chef and wine services etc).
- Walking distance to a village however please note that some parts of the route do not have pavements.

Terms & Conditions

- **Security deposit:** €1500 paid via bank transfer to the owner one month before arrival and refunded two weeks after departure, subject to full inspection.
- **Arrival time:** 4.00 p.m.
- **Departure time:** 11.00 a.m.
- **Energy costs included?:** Yes.
- **Linen & towels included?:** Yes and change every 3-4 days for weekly stays.
- **Pets welcome?:** Not allowed.
- **Other Ts and Cs:** Weddings any special events are on request only and subject to prior arrangement with the owner and additional charges. Stag/hen parties are not allowed. Cot and high chair available on request.
- **Changeover day:** All weekdays.
- **End of stay cleaning available?:** Yes and mid-stay cleaning. However, guests are required to leave the accommodation clean, tidy and in the same condition as on their arrival. Any extra cleaning, laundry, maintenance and/or rubbish disposal required will be charged against the security deposit.
- **Smoking Allowed?:** Outside only.
- **Insurance:** Guests are required to be in possession of a valid insurance policy, which covers them for cancellations, loss of personal belongings, personal liability and any accidental damage caused during their stay.
- **Minimum stay:** 7 nights. 2-6 night stays on request only.
- **Heating costs included?:** Yes.
- **Pool heating charge?:** Included from end-April to early-October. Please request at the booking moment and note that like all heated pools, pool heating and water temperature are reliant on weather and outside temperatures.
- **Tax:** French Visitors Tax payable locally in cash (typically costs €1-€10 per adult per night - please enquire if exact amount is required).
- **Pool opening dates?:** The pool is open approximately April to early-October. Please note that pool opening dates are subject to local weather conditions and pool maintenance requirements and that cooler months may not be suitable for swimming.