

Apartment Kristall

Region: Ski Arlberg **Sleeps:** 12

Overview

Located on the first floor, Apartment Kristall is an alpine haven that invites you to a mountain retreat where tradition meets modern comfort. The apartment seamlessly blends into the snowy landscape, offering direct access to the ski slope – a skier's dream come true.

Constructed with a keen eye on tradition, the emphasis on wood during the build lends an authentic charm to the accommodation. The interior, adorned in classic alpine style, boasts five bedrooms, each with its own ensuite bathroom. Four of these are cosy double or twin rooms, while the fifth is a bunk bed haven for four, creating a space that easily accommodates 10 to 12 people.

The heart of Apartment Kristall is the open-plan kitchen and living room, a communal space designed for shared moments after exhilarating days on the slopes. The dining area, with a seating capacity for 12, invites you to relish delicious meals and recount the day's adventures. The apartment caters to modern needs with WiFi, a flatscreen TV equipped with an Amazon Fire TV stick, and the option for a baby cot and highchair. A washing machine ensures convenience for longer stays, while luxury products in every bathroom add a touch of opulence.

Beyond the indoor comforts, the residence offers outdoor delights, including an alpine bio-sauna for the ultimate relaxation experience, while a table tennis setup promises fun-filled evenings with family and friends. In addition, parking your car is a breeze during your stay, thanks to the free underground garage which offers space for 2 vehicles.

Apartment Kristall is bursting with many amenities and services to elevate your stay. From a fully stocked kitchen on arrival to daily housekeeping, a welcoming bottle of champagne to a sweet regional afternoon snack, every detail is meticulously attended to. With a concierge service on-site and optional daily breakfast delivery in winter, this apartment isn't just a place to stay; it's a mountain retreat designed to make your alpine experience truly exceptional.

The chalet is available year-round, but facilities, property and local amenities may vary depending upon season.

Winter | Ski Chalet

December - April

Apartment Kristall transforms into a winter wonderland during the snowy season. Its direct access to the ski slope makes it a haven for skiers, allowing them to seamlessly transition from the apartment to the powdery slopes. The classic alpine interior provides a cozy retreat after exhilarating days on



the mountain. The communal kitchen and living room become a hub for sharing stories, while the dining area invites guests to relish delicious meals after a day of adventure. The alpine bio-sauna offers a perfect way to unwind, and the underground garage ensures hassle-free parking. With the option for daily housekeeping, a welcoming bottle of champagne, and the availability of a concierge service, Apartment Kristall is tailored to make winter stays truly memorable.

Summer | Alpine Chalet

June - September / October

As the snow gives way to lush greenery, Apartment Kristall transitions into a summer escape. The surrounding landscape offers hiking trails, mountain biking routes, and the chance to explore the beauty of the alpine region. The open-plan layout of the apartment becomes a bright and airy space, with the outdoor amenities taking centre stage. The alpine bio-sauna provides relaxation amidst nature, while the table tennis setup promises lively evenings. The fully stocked kitchen becomes a hub for preparing picnic lunches for outdoor adventures. The concierge service remains on hand to assist in planning summer activities, making Apartment Kristall a versatile mountain retreat for year-round enjoyment.

Facilities

Maid Service Included • Lakes and Mountains • Garage • Easy By Train • Table Tennis • Tennis Nearby • Watersports • Walk to Village • Cots (Cribs) • Golf Nearby • Wi-Fi/Internet • Modern • Summer Chalet • Chalet Apartment • Wellness • On-Site Concierge • Self-Catered • Ski-In/Ski-Out • Breakfast Included • Bathroom Toiletries • Ideal for Kids • Baby bath • Ideal for Teens • Pets on Request • Walk to Restaurant • Washing Machine • Tumble Dryer • Dishwasher • Microwave • Coffee Machine • Hairdryer • All Bedrooms En-Suite • TV • Sauna/Steam • High Chair(s) • Parking Space • Canoeing/Kayaking • Walking/Hiking Paths • Skiing • Cycling • Horse Riding • Fishing • Outstanding Landscapes • Outdoor Pursuit & Activities • Tourist Towns & Villages • Historical Sites • Paragliding

Interior & Grounds

The Apartment

Interior

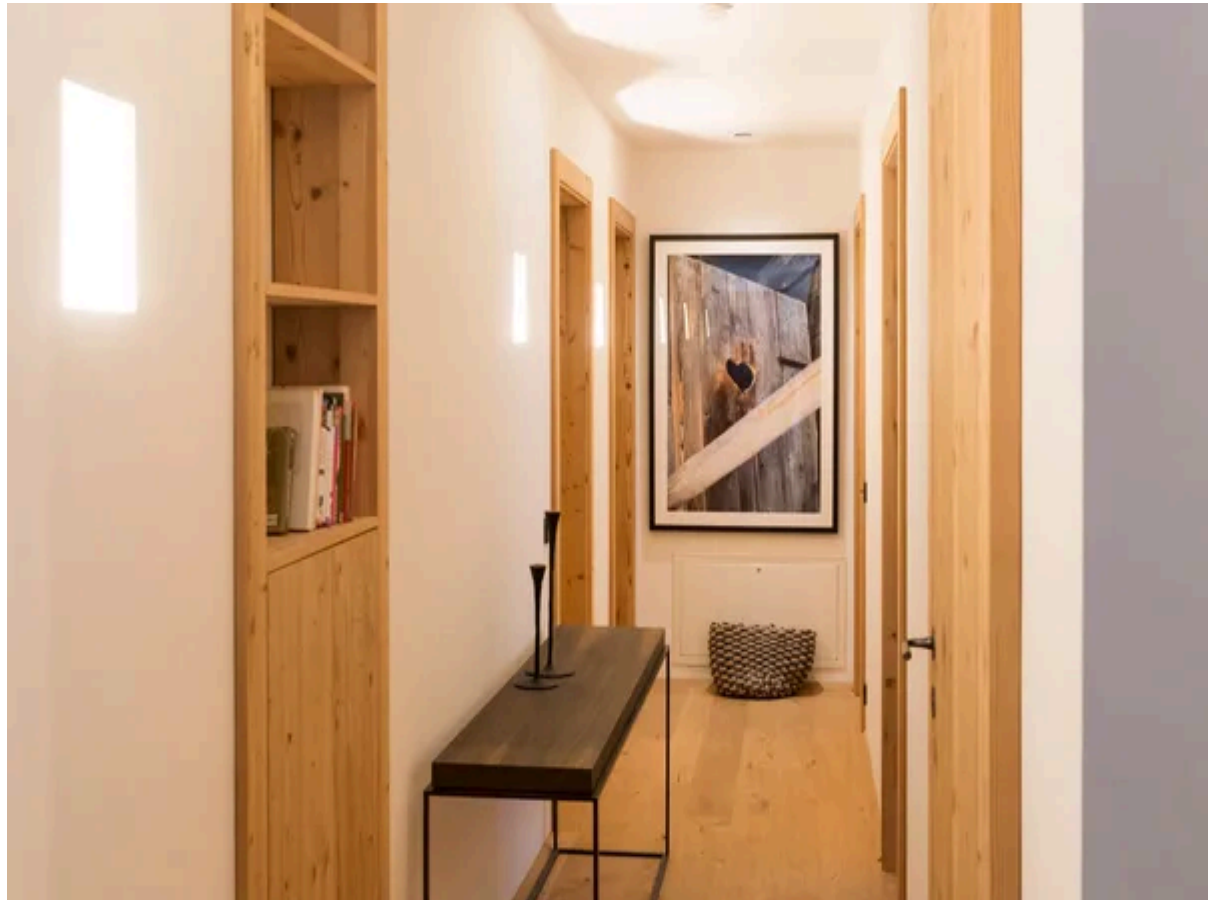
- Lounge space with sofas and TV
- Dining area with table and chairs
- Fully-equipped kitchen
- Bedroom with double bed (can be separated into 2 singles), ensuite bathroom with shower
- Bedroom with double bed (can be separated into 2 singles), ensuite bathroom with shower
- Bedroom with double bed (can be separated into 2 singles), ensuite bathroom with shower
- Bedroom with double bed (can be separated into 2 singles), ensuite bathroom with bathtub
- Bedroom with bunk beds (sleeps 4), ensuite bathroom with bathtub

Outdoor spaces

- Parking for 2 cars

Additional facilities

- Sauna
- Wifi
- Cot and highchair (available on request)
- Amazon fire stick
- Washing machine
- Bathrobes and slippers
- Table tennis
- Breakfast service (winter only)
- Concierge service



Location & Local Information

Nestled amidst the breathtaking landscapes of St. Anton, Apartment Kristall offers an enchanting escape into the winter wonderland of the Austrian Alps. Situated in the heart of the Arlberg, this charming accommodation is a gateway to the largest ski resort in Austria, boasting over 300 kilometres of marked slopes, 88 lifts, and gondolas, making it the fifth largest ski destination globally.

St. Anton, often hailed as the cradle of alpine skiing, caters to a diverse range of winter enthusiasts. Ski-tourers can revel in the majesty of the surrounding mountains, while adrenaline junkies have the option to book heli-skiing for an exhilarating experience. The town goes beyond traditional skiing, offering a 43-kilometre long cross-country skiing route and 80 kilometres of winter walks, allowing guests to immerse themselves in the serene snowy landscape.

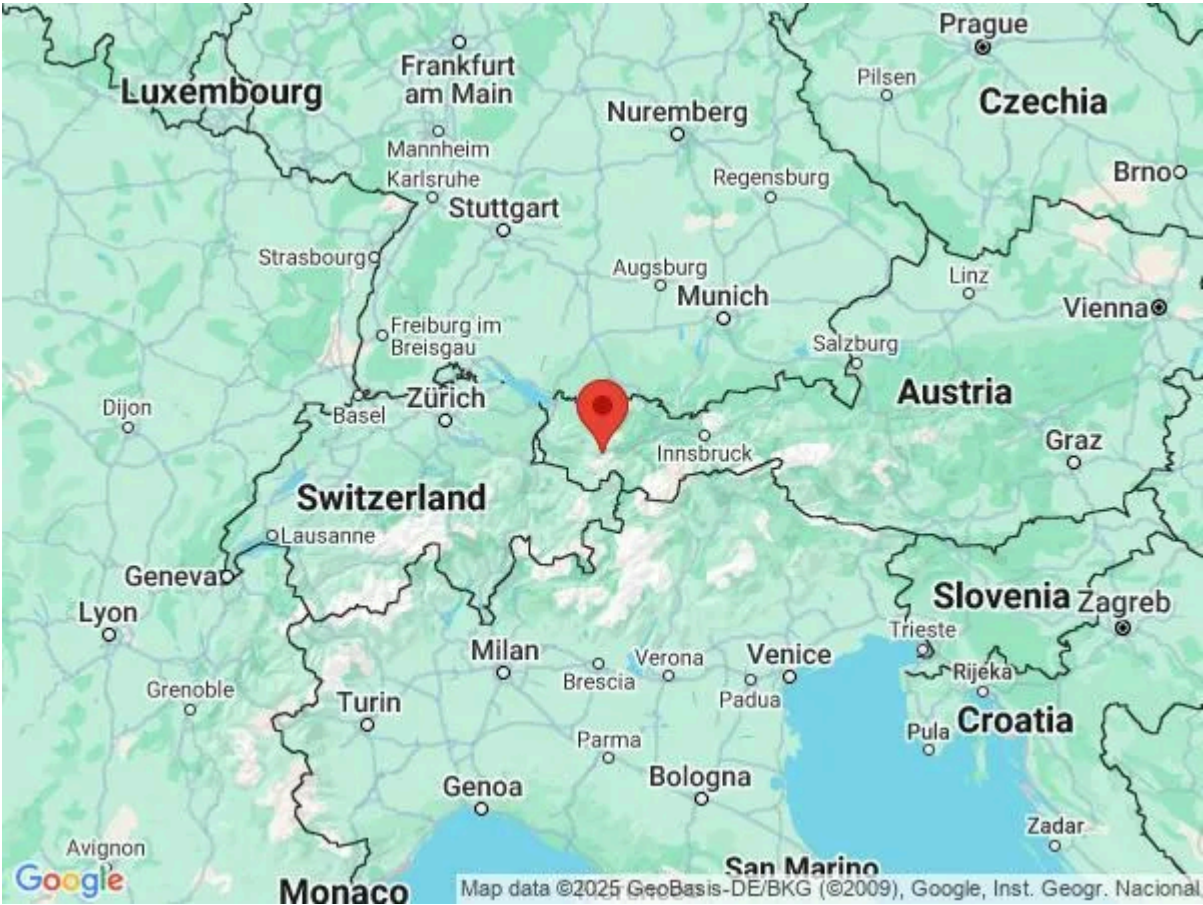
For thrill-seekers, a natural toboggan-run weaves through magical wintry woods, offering a perfect blend of excitement and scenic beauty. With 87 modern lifts and gondolas, 304 kilometres of on-piste skiing, and 200 kilometres of off-piste adventures, St. Anton stands as the largest connected ski resort in Austria.

Winter activities extend beyond the snow-covered slopes, with options like winter or snowshoe hikes along 17 marked paths covering 80 kilometres. The Arlberg WellCom Centre in the town centre offers an artificial ice rink and a modern wellness temple, featuring an indoor pool, an outdoor sports pool, a waterfall, whirlpool, counter-current system, and a children's pool.

As the seasons change, St. Anton transforms into a summer haven, inviting guests to explore the mountains through hikes and mountain biking tours. The town offers a variety of attractions, including swimming pools, archery, yoga sessions, guided hikes, and a nine-hole golf course with stunning mountain views.

Whether you're seeking the thrill of winter sports or the tranquillity of summer hikes, Apartment Kristall in St. Anton promises a magical escape with an abundance of activities to create lasting memories in every season.

All-Year Activities	Winter Activities	Summer Activities
<div><div>- Paragliding</div><div>- Ice Skating</div><div>- Mountaineering</div><div>- Tennis</div><div>- Squash</div><div>- Volleyball</div><div>- Climbing and Bouldering</div><div>- Swimming</div><div>- Horse Riding</div><div>- Bowling</div><div>- Yoga and wellness</div><div>- Heritage Tours</div><div>- Fitness Courses</div></div>	<div><div>- Skiing</div><div>- Ski Off Piste</div><div>- Ski Touring</div><div>- Snowboarding</div><div>- Cross Country Skiing</div><div>- Ice Climbing</div><div>- Dog Sledging</div><div>- Heliski</div><div>- Snowshoeing</div><div>- Speed Riding</div><div>- Pedestrian and snowshoer walks</div><div>- Adaptive Skiing</div><div>- First tracks skiing</div></div>	<div><div>- Trekking and Hiking</div><div>- Mountain Bike / eBike</div><div>- Trail Running</div><div>- Rock Climbing</div><div>- Road Cycling</div><div>- Water Sports</div><div>- Golf / Mini-golf</div><div>- Adventure and Fun Parks</div><div>- Llama and alpaca tours</div><div>- Lake Swimming</div></div>



		- Fishing - Paintballing
--	--	-----------------------------

Local Amenities

Nearest Airport	Innsbruck (98.4 km)
Nearest Airport 2	Zürich (183 km)
Nearest Piste	Stallmahder Fang 24 (0 m)
Nearest Ski Hire	Hervis St.Anton am Arlberg (950 m)
Nearest Ski Lift	Nassereinergasse 8 (160 m)
Nearest Restaurant	Arlberger Dorfstubn (950 m)
Nearest Bar/Pub	Keller Bar (180 m)
Nearest Supermarket	Billa (900 m)
Nearest Village	St Anton am Arlberg (900 m)
Nearest Town/City	Liechtenstein (79.2 km)
Nearest Train Station	St. Anton am Arlberg (1.2 km)
Nearest Golf	Golf-Club Arlberg (230 m)
Nearest Tennis	Tennisplatz (750 m)
Nearest Lift	Nassereinergasse 8 (160 m)
Nearest Track	Stallmahder Fang 24 (0 m)
Nearest Equipment Hire	Hervis St.Anton am Arlberg (950 m)

What we love

- We loved the traditional style of Apartment Kristall
- The whole group enjoyed making use of the sauna after a day on the slopes
- The room with bunk beds was a big hit with the kids

What you should know...

- Some services are only available during the winter months
- The apartment's double beds can be separated into singles
- Guests staying at Apartment Kristall enjoy direct access to the slopes

Terms & Conditions

- **Security deposit:** Secure link sent to the client's email to fill in the details of the client's bank card online 2 weeks before the arrival for the amount of €3000. Funds won't be taken or blocked on the credit card in this case.
- **Arrival time:** Check-in 4.00 PM.
- **Departure time:** Check-out 10.00 AM.
- **Energy costs included?:** Yes, included in the rental price.
- **Linen & towels included?:** Yes, included in the rental price.
- **Pets welcome?:** Pets allowed on request only.
- **Changeover day:** Saturday
- **End of stay cleaning available?:** Yes. However, guests are required to leave the accommodation clean, tidy and in the same condition as on their arrival. Any extra cleaning, laundry, maintenance and/or garbage disposal required will be charged against the security deposit.
- **Smoking Allowed?:** Smoking & Vaping are not permitted.
- **Minimum stay:** 7 nights.
- **Heating costs included?:** Yes, included in the rental price.
- **Tax:** Austrian Visitors Tax payable alongside balance, €5 per person, per night (youth over 15).
- **Internet access?:** Wi-Fi internet access included.
- **Stag & Hen Do Allowed? :** On request only.

The chalet is available year-round, but facilities, property and local amenities may vary depending upon season.