

Comporta Pimenta

Region: Comporta **Sleeps:** 9

Overview

Welcome to the enchanting Comporta Pimenta, an idyllic retreat tucked away in the heart of Carvalhal, a mere stroll away from the pristine beaches of the region. This charming four-bedroom villa beckons families or groups of up to nine guests to revel in a delightful and spacious haven where comfort and style seamlessly intertwine.

Upon entering this 160-square-metre sanctuary, you're embraced by a carefully designed living space that radiates a cosy ambience. The tranquil neighbourhood that surrounds the villa provides a serene backdrop for your holiday escape, ensuring a peaceful retreat from the hustle and bustle of everyday life.

Comporta Pimenta doesn't just offer a place to stay; it offers an experience. The outdoor spaces are thoughtfully adorned with amenities that beckon you to bask in the pleasant Portuguese climate. A fenced garden guarantees privacy and the inviting barbecue area set the stage for delightful al fresco dining under the sun or stars.

Step inside, and you'll find a tastefully decorated interior equipped with modern comforts. Stay connected with wifi, indulge in your favourite shows on the two TVs featuring satellite channels, or cosy up by the fireplace on cooler evenings. The entire villa is air-conditioned, ensuring a comfortable environment throughout your stay.

Comporta Pimenta's kitchen is a culinary haven, equipped with all the essentials and more—refrigerator, microwave, oven, freezer, dishwasher, and a range of kitchen utensils, while a coffee machine, toaster, and kettle stand ready for your morning rituals.

Beyond the tangible features, Comporta Pimenta exudes a certain allure—a fusion of modern comforts and a serene



atmosphere. Whether you're lounging by the private swimming pool, enjoying a barbecue in the fenced garden, or simply unwinding indoors, this stylish retreat invites you to create lasting memories in the captivating beauty of Carvalhal.

Intricately designed with 160 square metres of living space on a 1,500-square-metre plot, this stunning villa offers more than just accommodation—it offers an escape into the charm and tranquillity of Portugal's coastal paradise. With open-air parking, electric heating, and mosquito nets throughout, this villa ensures a seamless blend of luxury and practicality, making it the perfect choice for an unforgettable holiday.

Facilities

Wi-Fi/Internet • Golf Nearby • Air-Con • Chef/Cook Available • Rural Location • Cots (Cribs) • Villa • Instagrammable • Modern • Wellness • Yoga Classes Available • Transfers Available • Recommended • Private Pool • Ideal for Kids • Ideal for Teens • Walk to Restaurant • Washing Machine • Dishwasher • Microwave • Coffee Machine • Hairdryer • Satellite TV • High Chair(s) • Fenced Grounds • Parking Space • Canoeing/Kayaking • Walking/Hiking Paths • Wine Tasting • Outstanding Landscapes • Outdoor Pursuit & Activities • Tourist Towns & Villages

Interior & Grounds

The Villa

Ground Floor

- Lounge space with sofa, chairs, fireplace and TV
- Dining area with table and chairs
- Fully equipped kitchen with breakfast bar and stool seating, oven, microwave, dishwasher, kettle, coffee machine, toaster, fridge-freezer
- Bedroom with queen-size bed and ensuite bathroom
- Bedroom with two single beds and ensuite bathroom
- Bedroom with four single beds and ensuite bathroom
- Bedroom with single bed and ensuite bathroom
- Guest bathroom

Outside Grounds

- Private pool
- Fenced garden
- Furnished terrace
- Barbecue
- Sun loungers
- Table and chairs
- parking

Additional facilities

- Wifi
- Air conditioning
- Hairdryer
- Washing machine
- Iron
- Mosquito nets
- Heating
- Satellite TV channels



Location & Local Information

Nestled in the heart of the sun-kissed Carvalhal, Comporta Pimenta stands as a captivating holiday haven, just a leisurely stroll away from the pristine beaches that define the allure of this coastal region. Picture yourself waking up to the soothing sounds of the nearby waves, with the promise of sun-soaked adventures awaiting just 1.7 kilometres away at the sandy beach.

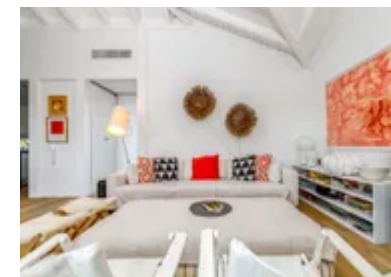
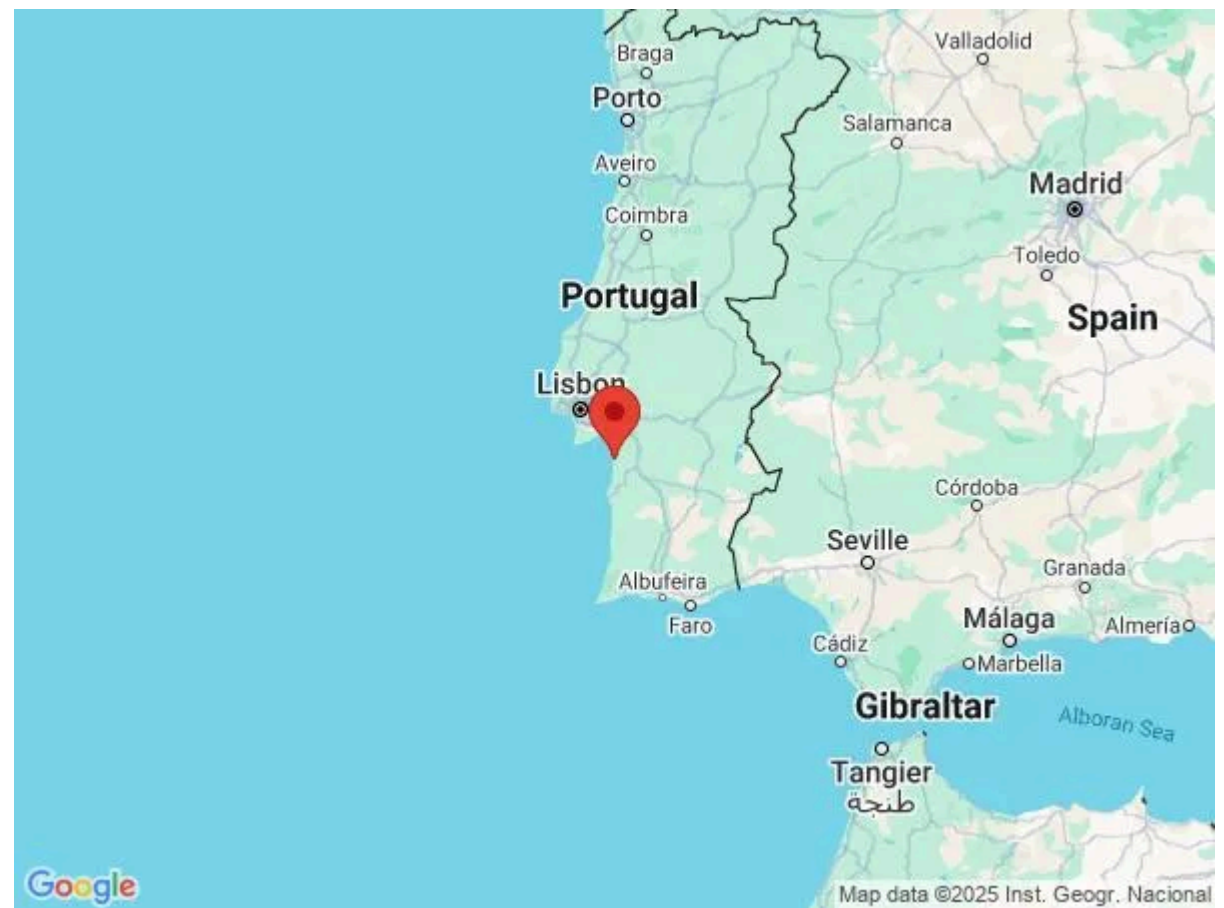
What makes this villa an appealing holiday destination is not just its cosy charm but its strategic location that opens the door to a plethora of attractions and amenities. Beyond the tranquil neighbourhood that cradles Comporta Pimenta, the surrounding area is a treasure trove of delights for every type of traveller.

For beach enthusiasts, the mere 1.7 kilometres to the sandy shores means days of sunbathing, sea-breeze strolls, and perhaps a bit of surfing if you're feeling adventurous. The coastline here is a postcard-worthy stretch of golden sand, inviting you to relax and rejuvenate under the Portuguese sun.

If you're a food connoisseur, the local dining scene promises to tantalise your taste buds. From quaint seafood eateries to charming cafes serving up traditional Portuguese delights, the culinary journey here is as diverse as it is delicious. Indulge in the freshest catches of the day, complemented by the region's renowned wines, creating a symphony for your senses.

For those seeking a blend of nature and adventure, the surroundings boast hiking trails and nature reserves that offer a glimpse into the lush beauty of the region. Immerse yourself in the captivating landscapes, from rolling hills to coastal cliffs, providing a perfect backdrop for exploration and outdoor activities.

Comporta Pimenta's location is not just about proximity to attractions but the promise of an authentic Portuguese experience. It's about immersing yourself in the rhythm of the local life, savouring the flavours, and embracing the



tranquillity that defines Carvalhal. With its ideal positioning, this villa invites guests to not just stay but to truly experience the vibrant tapestry of this coastal paradise, making it an appealing destination for those seeking a perfect blend of relaxation and exploration.

Local Amenities

Nearest Airport	Lisbon Airport (127 km)
Nearest Bar/Pub	JNcQUOI Beach Club (2 km)
Nearest Beach	Praia do Pego (2 km)
Nearest Ferry Port	Atlantic Ferries - Tróia (25 km)
Nearest Golf	Dunas Comporta (4 km)
Nearest Restaurant	O Tobias (1 km)
Nearest Supermarket	Minimercado Matias Carvalhal (3 km)
Nearest Town/City	Grandola (26 km)
Nearest Village	Lagoa Formosa (900 m)

What we love

- The bright, open-plan interior of the Comporta Pimenta is the ideal space for larger groups
- The configuration of the bedrooms made it easy to accommodate everyone
 - the kids loved the room with four single beds, which meant they could room together
- The whole group enjoyed making use of the villa's private pool

What you should know...

- Each bedroom features an ensuite bathroom
- The private pool is unfenced, and the walkway around it is narrow in places, so children will need to be well-supervised while playing in the vicinity
- Comporta Pimenta is located just 1.7km from the nearest sandy beach
- A cot and highchair are available on request at an additional fee

Terms & Conditions

- **Security deposit:** €2000 charged to client's credit card as a pre-authorisation at least 2 weeks prior to arrival and refunded two weeks after departure, subject to full inspection.
- **Arrival time:** 4 pm
- **Departure time:** 11 am
- **Energy costs included?:** Yes, included in the rental price.
- **Linen & towels included?:** Yes, included in the rental price.
- **Pets welcome?:** Not allowed.
- **Other Ts and Cs:** Cot is an extra €8 per day, to be paid with the balance.
 Highchair is €6 per day, to be paid with the balance.

- **Changeover day:** Flexible.
- **End of stay cleaning available?:** Extra €250, paid to OT with the balance. However, guests are required to leave the accommodation clean, tidy and in the same condition as on their arrival. Any extra cleaning, laundry, maintenance and/or garbage disposal required will be charged against the security deposit.
- **Smoking Allowed?:** Smoking & vaping are not permitted.
- **Minimum stay:** 5 nights.
- **Heating costs included?:** Yes, included in the rental price.
- **Pool heating charge?:** Not available.
- **Tax:** Tourist tax not applicable.
- **Internet access?:** Wi-Fi internet access included.
- **Pool towels included?:** Not included.