

Baan Pattana

Region: Koh Samui **Sleeps:** 4

Overview

Imagine stepping into a slice of paradise nestled on the tropical island of Koh Samui, where a beautiful private villa awaits, offering stunning views of sunsets, sea, and sandy beaches stretching for miles. Baan Pattana is the epitome of luxury living, perfect for small groups and families seeking an exclusive retreat.

As you enter through the gated entrance adorned with sculpted metal gecko door handles and welcoming Buddha statues, you'll immediately feel the tranquillity of this tropical haven. The villa boasts a mesmerising infinity pool, measuring 10.3 metres, with uninterrupted ocean views and surrounded by lush tropical gardens and natural rocks, creating a private poolside paradise.

The heart of the villa lies in its expansive living space, where high vaulted ceilings and ample seating invite you to relax and soak in the panoramic views of the ocean and sunsets. The open-plan layout seamlessly integrates the lounge, dining, and kitchen areas, providing a flexible living experience enhanced by the surrounding natural beauty.

The kitchen is a chef's dream, equipped with modern appliances, including an oven, microwave, coffee machine, and wine cooler, set against the backdrop of ocean vistas. The dining area features a natural wooden table where you can enjoy delicious Thai cuisine prepared by an in-villa chef upon request.

The villa comprises two stylish bedrooms, each opening onto the terrace and offering airy high ceilings, full-height sliding glass walls, and spacious en-suite bathrooms. The master suite boasts a draped four-poster bed and stunning ocean views, while the second bedroom offers the option of twin beds, ideal for families or friends travelling together.



For those seeking elevated luxury, a spiral staircase leads to the mezzanine studio space, complete with a large-screen TV, luxury bathroom, and breathtaking views of the sea—a perfect retreat for relaxation or work.

Outside, the villa terrace provides ample space for outdoor living, furnished with comfortable seating where you can enjoy morning coffee, yoga sessions, or sundowner cocktails while basking in the beauty of Koh Samui's natural landscape.

With direct beach access and a host of amenities, including sound systems, smart TVs, and barbecue facilities, Baan Pattana promises a luxurious and unforgettable stay where memories are made against the backdrop of paradise.

Facilities

Maid Service Included • Chef/Cook Available • Villa • Wi-Fi/Internet • Golf Nearby • Beach Nearby • Walk to Beach • Modern • Pre-Stocked Fridge Available • Spa Treatments Available • Transfers Available • On-Site Concierge • Breakfast Included • Private Pool • Laundry Service • Ideal for Kids • Ideal for Teens • Walk to Restaurant • <1hr to Airport • Microwave • Coffee Machine • Hairdryer • All Bedrooms En-Suite • Ground Floor Bed & Bath • Satellite TV • Ceiling Fans • Parking Space • Seaview • Outstanding Landscapes • Outdoor Pursuit & Activities

Interior & Grounds

Villa Interiors

- Lounge space with sofas, air conditioning and ceiling fan
- Dining area with table and chairs
- Fully-equipped kitchen with wine cooler, oven, hob, microwave, rice cooker, blender, juicer, coffee machine, fridge-freezer, toaster, dishwasher
- Master bedroom with four-poster bed, air conditioning, ceiling fan and ensuite bathroom
- Bedroom with double bed (can be separated into 2 singles), air conditioning, ceiling fan and ensuite bathroom
- Mezzanine level with sofas, desk, TV with Netflix, air conditioning, ceiling fan, coffee machine, fridge, bathroom

Exterior Grounds

- Infinity pool with shallow zone
- Tropical gardens
- Sun loungers
- Furnished terrace
- Outdoor sofa
- Daybeds
- Alfresco dining area with table and chairs
- Barbecue
- Private parking

Additional Facilities

- Wi-fi
- Private chef (available on request)
- Housekeeping service
- Printer (available on request)
- BOSE speakers
- Satellite TV channels
- Safe
- Hairdryers
- Laundry facilities (available on request)



Location & Local Information

Nestled along the pristine western coast of Koh Samui, Baan Pattana offers an idyllic retreat immersed in natural beauty and tropical splendour. Situated in close proximity to the InterContinental Samui Baan Taling Ngam Resort, the villa enjoys a privileged location with direct beach access and stunning views of sunsets, sea, and sandy beaches that stretch as far as the eye can see.

From the villa's vantage point, guests can marvel at the famous Five Islands and Ang Thong Marine Park, painting a picturesque backdrop that epitomises the essence of island living. Beyond the confines of the villa, there lies a world of exploration and adventure waiting to be discovered.

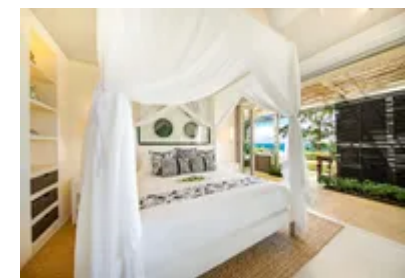
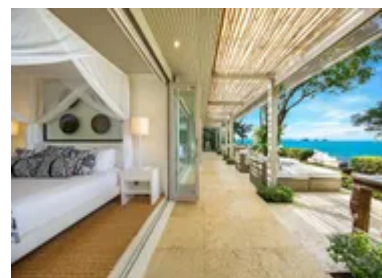
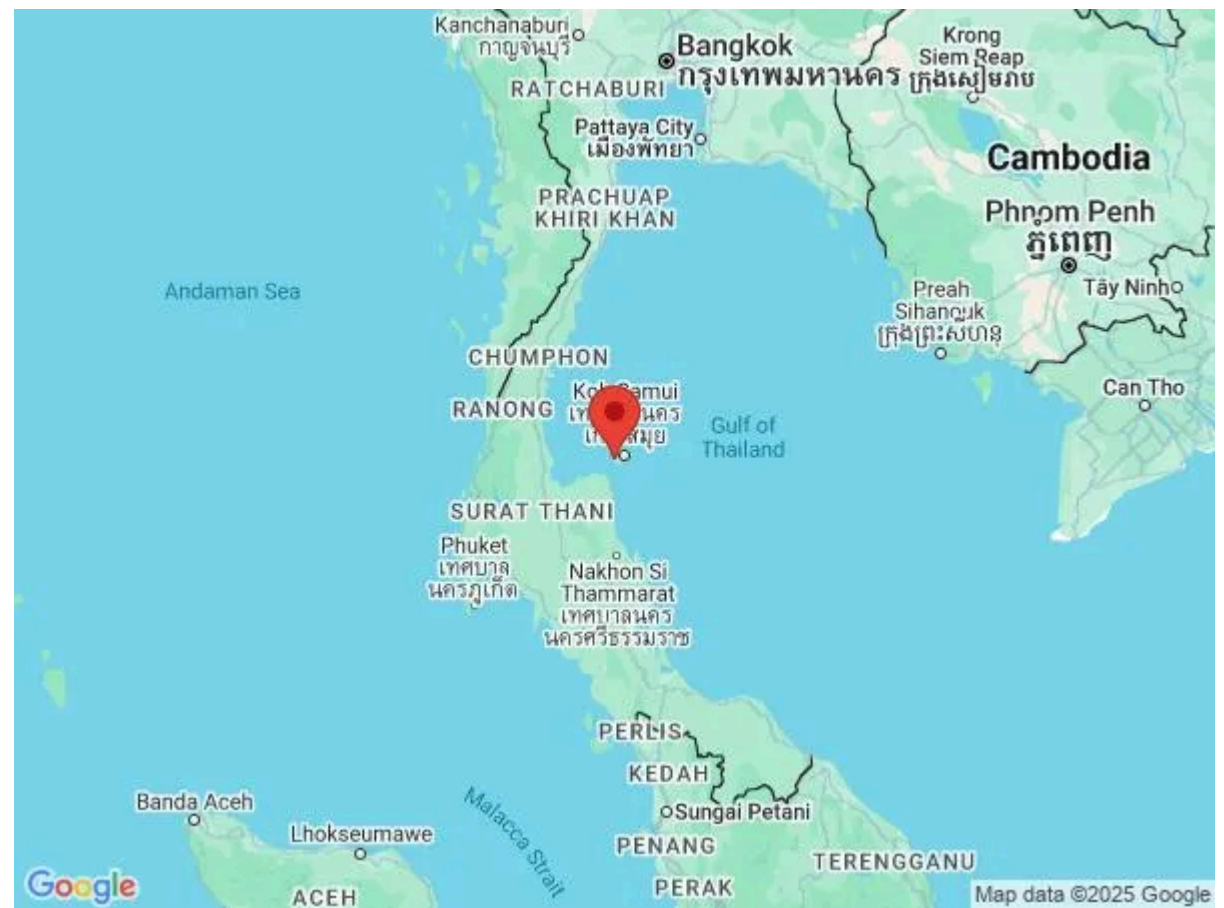
Just a stone's throw away lies the powdery white sands of the beachfront, inviting guests to bask in the sun, take leisurely strolls along the shore, or indulge in water sports activities offered by the nearby resort. For those seeking a taste of nature's wonders, the Na Mueang Waterfall is a short distance away, where cascading waters amidst lush greenery create a tranquil oasis.

Travellers with a penchant for golf can tee off at the prestigious Santiburi Golf Course, while beach enthusiasts can explore the vibrant shores of Lamai Beach, renowned for its lively atmosphere and array of seaside attractions.

As the sun sets, the Chaweng Night Market Center comes alive with bustling stalls offering delectable street food, handicrafts, and live entertainment, providing a glimpse into the island's vibrant culture and culinary delights.

For those in search of retail therapy, Central Festival Samui and Fisherman's Village beckon with an eclectic mix of shops, boutiques, and restaurants catering to every taste and preference.

Conveniently located just a short drive from Samui International Airport, Baan Pattana offers easy access to the island's main attractions, including the iconic Big



Buddha Temple, where visitors can marvel at the majestic statue and soak in the spiritual ambience of this sacred site.

Whether seeking relaxation or adventure, Baan Pattana's prime location ensures that every moment is filled with wonder and discovery amidst the breathtaking landscapes of Koh Samui.

Local Amenities

Nearest Airport	Samui Airport (30.4km)
Nearest Town/City	Koh Samui (25.8km)
Nearest Restaurant	The Island View (750m)
Nearest Beach	(On-Site)
Nearest Golf	Santiburi Golf Course (25.2km)
Nearest Shop	7-Eleven (2.5km)
Sightseeing	Big Buddha Temple (32.8km)

What we love

- We loved the breathtaking ocean views from Baan Pattana
- It was incredible to have direct access to the beach
- The villa has a private infinity pool - need we say more!?

What you should know...

- One of the villa's bedrooms can be configured as either a double or a twin room for your convenience
- The private pool features a shallow end, making it ideal for children
- Some amenities such as a private chef, laundry facilities and a printer are available on request

Terms & Conditions

- **Security deposit:** Credit card details are required 2 weeks prior to departure for pre-authorisation.
- **Arrival time:** 15:00 - 22:00
- **Departure time:** 11:00
- **Energy costs included?:** Yes, included in the rental price.
- **Linen & towels included?:** Yes, included in the rental price.
- **Pets welcome?:** Not allowed.
- **Changeover day:** Flexible.
- **End of stay cleaning available?:** Yes. However, guests are required to leave the accommodation clean, tidy and in the same condition as on their arrival. Any extra cleaning, laundry, maintenance and/or rubbish disposal required will be charged against the security deposit.
- **Smoking Allowed?:** Smoking & Vaping are not permitted.
- **Minimum stay:** 2 - 7 nights, depending on season. All other durations on request.
- **Heating costs included?:** Not available on this property.
- **Pool heating charge?:** Not available on this property.
- **Tax:** Tourist tax not applicable.
- **Internet access?:** Wi-Fi internet access included.
- **Pool towels included?:** Yes, included in the rental price.