

Apartment Plantret

Region: 3 Valleys Sleeps: 6

Overview

Nestled amidst the stunning natural beauty of Courchevel 1850, Apartment Plantret is a warm and welcoming three-bedroom property boasting plenty of contemporary charm. With a private sauna and dreamlike mountain views, this cosy apartment offers a stylish home away from home for up to six guests and direct access to the ski slopes.

Step into the warmth of the apartment's open-plan living space, where every detail reflects comfort and style. The cosy lounge corner welcomes you with a sumptuous sofa, inviting you to unwind in peace with a glass of wine after an invigorating day on the slopes. The large windows frame breathtaking views of the snow-covered peaks, creating an unforgettable backdrop for your stay.

The living space also features a charming dining area where everyone can gather to enjoy a family feast, while the fully equipped kitchen boasts a range of modern appliances. Share laughter and recount the day's adventures as you enjoy laidback evenings at home in Apartment Plantret, where cherished moments will become a part of your Courchevel experience.

One of the highlights of Apartment Plantret is undoubtedly the Finnish-style sauna, a private oasis where you can soothe your muscles and rejuvenate your spirit. After an exhilarating day of skiing and exploring your picturesque surroundings, immerse yourself in the warmth of the sauna, letting the soothing heat melt away the stresses of everyday life.

Unwind in the apartment's three well-appointed bedrooms, each a sanctuary of relaxation after a day on the slopes. The apartment features two double bedrooms and a cabin-style bedroom with bunkbeds, the ideal spot for two younger visitors to enjoy a sleepover in the mountains. One of the double bedrooms features a modern en-suite bathroom, while a shared family bathroom provides guests with a walk-in shower and a pair of vanity basins. Comfortable bedding and a cosy ambience in each bedroom ensure a peaceful night's sleep, preparing you for another day of adventure in the enchanting Courchevel.

Convenience meets comfort with the apartment's prime location in Courchevel 1850, offering ski-in ski-out access for an effortless start to your Alpine adventures. Meanwhile, the vibrant atmosphere of the village centre is within easy reach, providing access to local shops, traditional restaurants, and lively après-ski spots.

The chalet is available year-round, but facilities, property and local amenities may vary depending upon season.

Winter | Ski Chalet

December - April



Discover the enchanting winter wonderland of Courchevel 1850 at Apartment Plantret, a cozy three-bedroom escape surrounded by snow-covered peaks. Offering ski-in ski-out access and accommodating up to six guests, the property features a private sauna and captivating mountain views. The open-plan living space invites you to unwind in style, while the charming dining area and fully equipped kitchen set the stage for après-ski delights. The Finnish-style sauna becomes a private haven after exhilarating days on the snowy slopes. With two double bedrooms and a bunk-bedded room, Apartment Plantret ensures a restful night's sleep, preparing you for another day of snowy adventures in the heart of Courchevel 1850's winter charm.

Summer | Alpine Chalet

June - August

Escape to the summer oasis of Courchevel 1850 and experience the warm embrace of Apartment Plantret. This three-bedroom property, surrounded by stunning natural beauty, invites you to a haven of contemporary charm. With a private sauna and mesmerizing mountain views, this cosy apartment serves as a stylish home away from home for up to six guests and provides easy access to the ski slopes.

Facilities

Horse Riding • Lakes and Mountains • Washing Machine • Coffee Machine • Wellness • Hairdryer • Paragliding • Self-Catered • Skiing • Cycling • Tennis Nearby • Historical Sites • Watersports • Walking/Hiking Paths • Wi-Fi/Internet • Golf Nearby • Fishing • TV • Wine Tasting • Rural Location • Walk to Village • Wow Factor • Summer Chalet • Chalet Apartment • Yoga Classes Available • Transfers Available • Bathroom Toiletries • Ideal for Kids • Ideal for Teens • Walk to Restaurant • Dishwasher • Microwave • Sauna/Steam • Heating • Parking Space • Outstanding Landscapes • Outdoor Pursuit & Activities • Tourist Towns & Villages

Interior & Grounds

The Apartment

Interiors (63sqm)

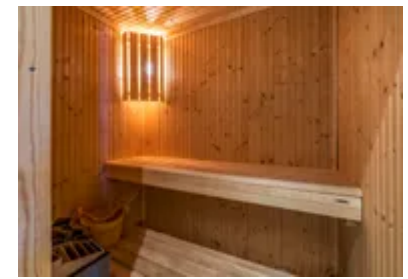
- Open-plan living space
- Lounge area
- Dining area
- Fully equipped kitchen
- Private sauna
- Double bedroom with en-suite bathroom
- Double bedroom
- Cabin bedroom with bunk beds for kids
- Family bathroom with shower
- WC

Outside Grounds

- Covered garage on site
- Ski-in ski-out access

Additional Facilities

- WiFi
- Ski lockers
- Smart TV
- Microwave
- Coffee machine
- Parking space (on request)



Location & Local Information

Courchevel offers visitors an unforgettable winter escape in the heart of the French Alps. Renowned for its stunning Alpine scenery, world-class ski facilities and lively atmosphere, the picturesque Courchevel resort is a dream come true for winter sports enthusiasts and nature lovers alike.

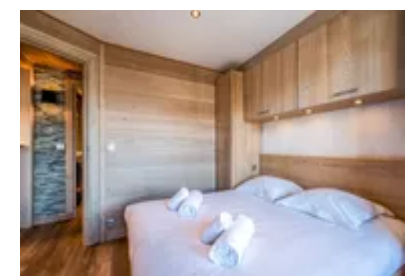
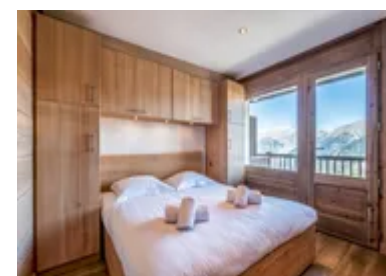
Located at an altitude of 1550 metres, Courchevel Village is the perfect starting point for skiers of all abilities, from those just starting to dedicated seasonaires. The Courchevel resort boasts over 150km of powder-soft pistes, interconnected with Les 3 Vallées, the world's largest ski area, offering a vast network of 600km of slopes.

For novice skiers and snowboarders, the village offers a range of well-established ski schools with experienced instructors. The Courchevel 1550 ski area boasts a great beginner's zone and a lift called Roys with a gentle green run alongside it. There are also three scenic blue pistes which run back down into the village, ideal for those who fancy a challenge after their morning lessons. Confident skiers can hop on the high-speed Grangettes gondola to arrive at the heart of the Courchevel 1850 ski area in under five minutes. From here, intermediate and advanced skiers can make their way up into the mountains to tackle a variety of pistes, including the challenging Combe de la Saulire, an expansive red run with breathtaking panoramic views.

Beyond the slopes, Courchevel Village offers a laidback après-ski experience, ideal for those who prefer to avoid the hustle and bustle and completely unwind. Rustic ski bars provide visitors with a warm and welcoming ambience, while stylish wine bars are perfect for watching the world go by as you sip a well-earned glass of red. Indulge in an evening of delectable Savoyard cuisine at one of the excellent local restaurants or make your way up to Courchevel 1850 for an evening of live music and dancing. The Grángettes gondola links both areas into the evening, while a free shuttle bus also runs until late at night.

For those seeking somewhere to soothe their tired muscles, the fantastic Aquamotion Courchevel is located along the main valley road, only a two-minute walk away from the centre of Courchevel 1550. The aquatic centre features a heated outdoor lagoon, an indoor swimming pool, exhilarating slides, and play areas for kids, as well as fabulous spa facilities such as saunas, hot tubs, and a floating salt pool.

Surrounded by idyllic Alpine scenery, the Courchevel resort offers something for everyone, with a great network of varied slopes, a modern ski lift system, excellent ski schools and a vibrant après-ski scene. During the summer months, the resort becomes a hiker's paradise of green meadows, beautiful wildlife and glacial lakes. Whether you fancy adrenaline-fuelled adventures on the snow-white slopes or a peaceful mountain retreat in the sunshine, Courchevel is a true Alpine gem, whatever the season.



All-Year Activities	Winter Activities	Summer Activities
<ul style="list-style-type: none"> - Paragliding - Ice Skating - Mountaineering - Heritage Tours - Fitness Courses 	<ul style="list-style-type: none"> - Skiing - Ski Off Piste - Ski Touring - Ski la Vallee Blanche 	<ul style="list-style-type: none"> - Trekking and Hiking - Cycling - Trail Running - Rock Climbing - Road Cycling

- Bowling - Wine tasting - Culture and heritage tours	- Snowboarding - Cross Country Skiing - Ice Climbing - Dog Sledging - Heliski - Snowshoeing - Speed Riding - Ski Joering - Adaptive Skiing - Telemark	- Water Sports - Golf / Mini-golf - Via Ferrata - Horse Riding - Adventure and Fun Parks - Tennis - Squash - Lake Swimming - Fishing - Paintballing
--	---	---

Local Amenities

Nearest Airport	Geneva Airport (188 km)
Nearest Town/City	Courchevel 1850 (300 m)
Nearest Restaurant	Le Mangeoire (280 m)
Nearest Bar/Pub	Au planté de bâton (550 m)
Nearest Piste	Chenus (240 m)
Nearest Ski Lift	La Croisette (240 m)
Nearest Ski Hire	Intersport (350 m)
Nearest Supermarket	Carrefour Montagne (600 m)
Nearest Golf	Golf Club de Courchevel (1.4 km)
Nearest Tennis	Club des Sports Courchevel (220 m)
Nearest Track	Chenus (240 m)
Nearest Lift	La Croisette (240 m)

What we love

- After an exhilarating day spent exploring the wonders of Courchevel, we loved sipping a glass of wine and enjoying a hearty family feast back at Apartment Plantret.
- We adored the apartment's ski-in ski-out location, with direct access to the slopes of Courchevel 1850 and an excellent local ski school.
- We still dream about spending laidback evenings relaxing in warmth of Apartment Plantret's soothing sauna.
- We highly recommend the village's vibrant après-ski scene, encompassing cosy wooden taverns, traditional Savoyard dining experiences, and lively, sun-drenched terraces.

What you should know...

- With two double bedrooms and a cosy kids' bedroom with bunk beds, Apartment Plantret accommodates up to six guests in total. Two of the bedrooms do not benefit from natural light.
- The apartment is located on the fourth floor of a residential building with no elevator. All balconies are currently closed.
- An end-of-stay cleaning service is included, with additional cleaning and laundry services offered throughout your stay upon request.

Terms & Conditions

- **Security deposit:** At the day of your arrival, please note that a security deposit of 500€ will be pre-authorized on the credit card provided and released after departure shall there be no damage in the property.
- **Arrival time:** 16:00 - 00:00
- **Departure time:** 10:00
- **Energy costs included?:** Yes, included in the rental price.
- **Linen & towels included?:** Yes, included in the rental price.
- **Pets welcome?:** Not allowed.
- **Other Ts and Cs:** Please note the property charges 300 EUR for any breach of their rules.
- **Changeover day:** Flexible.
- **End of stay cleaning available?:** Yes. Guests are required to leave the accommodation clean, tidy and in the same condition as on their arrival. Any extra cleaning, laundry, maintenance and/or rubbish disposal required will be charged against the security deposit.
- **Smoking Allowed?:** Smoking & Vaping are not permitted.
- **Minimum stay:** 5-7 nights, can vary between seasons.
- **Heating costs included?:** Yes, included in the rental price.
- **Tax:** Tourist Tax included in the rental price.
- **Internet access?:** Wi-Fi internet access included.

The chalet is available year-round, but facilities, property and local amenities may vary depending upon season.