

# Apartment Elfe

**Region:** Ski Arlberg **Sleeps:** 12

---

## Overview

Imagine stepping into your own penthouse in St Anton, where luxury meets Alpine charm at Chalet Fabiola - welcome to Apartment Elfe. Perched atop the landscape, this sensational accommodation sprawls across the entire top floor, accommodating groups of 10 to 12 people in absolute comfort and style. It's the ultimate retreat for those seeking refuge in opulence after exhilarating days on the slopes.

As you step inside, the penthouse greets you with its elegant, open layout, seamlessly blending contemporary design with classic Austrian chalet aesthetics. High ceilings adorned with exposed roof beams accentuate the space, while fine wood and natural stone exude warmth and charm throughout. Two expansive patios invite you to bask in the sun and admire breathtaking mountain vistas, ensuring the Alps are always within reach.

The heart of the penthouse is its inviting living space, boasting an L-shaped floor plan that effortlessly connects the kitchen, dining, and lounging areas. The open-plan kitchen, equipped with top-of-the-line appliances, seamlessly transitions into a cosy dining space, where stories are shared and memories are made over sumptuous meals.

Sink into the plush comforts of the seating area, where a generous corner sofa and armchairs beckon you to unwind by the modern fireplace, crackling with warmth and ambience. Five stunning bathrooms, each adorned with beautiful natural stone finishes, offer luxurious sanctuaries for rest and rejuvenation after a day of adventure.

With amenities ranging from underground parking to a communal ski cellar and wellness space with a sauna,



every aspect of your stay is meticulously curated for utmost comfort and convenience. Indulge in the warm welcome of a welcome drink, personalised concierge service, and optional breakfast prepared by our in-house Chalet Chef. From ski passes to off-piste guides and private airport transfers, our additional services ensure a seamless and unforgettable experience tailored to your every need.

In your private oasis at Apartment Elfe, every moment is infused with unparalleled luxury and Alpine splendour, promising memories to last a lifetime amidst the breathtaking beauty of St Anton.

## Facilities

Walking/Hiking Paths • Lakes and Mountains • Coffee Machine • Hairdryer  
• Paragliding • Self-Catered • Skiing • Spa/Massage • Wi-Fi/Internet •  
Cots (Cribs) • Indoor Games • Easy By Train • Walk to Village •  
Gym/Fitness Room • Lift • Instagrammable • Modern • Chalet Apartment  
• Breakfast Included • Bathroom Toiletries • Ideal for Kids • Ideal for  
Teens • Walk to Restaurant • Dishwasher • Microwave • All Bedrooms En-  
Suite • Sauna/Steam • Working Fireplace/Woodburner • Heating • High  
Chair(s) • Parking Space • Outstanding Landscapes • Outdoor Pursuit &  
Activities • Tourist Towns & Villages

# Interior & Grounds

## The Apartment

### *Layout*

### *Interior*

- Lounge space with L-shaped sofa, chairs and fireplace
- Dining area with table and chairs for 12 guests
- Fully-equipped kitchen
- Bedroom with king-size bed and ensuite bathroom
- Bedroom with king-size bed and ensuite bathroom
- Bedroom with king-size bed and ensuite bathroom
- Bedroom with king-size bed and ensuite bathroom
- Bedroom with king-size bed and bunk bed (sleeps 2), ensuite bathroom

### *Outdoor spaces*

- Patio x 2
- Parking for 2 cars

### **Additional facilities**

- Wifi
- Elevator
- Communal ski cellar
- Boots heaters
- Communal sauna
- Communal relaxation area
- Massage room and table
- Sports room including; treadmill and indoor bike
- Private chef
- Fridge
- Oven
- Microwave
- Professional Oven
- X2 Dishwasher
- Kitchen Island
- Nespresso Coffee Machine and pods
- Kitchen Exhaust Hood
- Blender / Mixer
- Toaster
- Kettle
- Juice Extractor



- Concierge
- Luxury toiletries
- Cleaning service
- Concierge Service
- Luxury Austrian Style Property
- Central and underfloor heating
- Bathrobe and Slippers
- Entry and Gate Code upon arrival
- Automatic Gate
- Interphone for the property
- Hairdryer in every bathroom
- Firewood provided
- X2 Baby Cot
- Travel Cot
- Highchair
- Soundsystem
- Electric fireplace
- Bookcase
- Iron and ironing board
- Children's games
- Terrace furniture
- Rooftop terrace
- Underground parking for 2 cars
- Outside parking for 2 cars



## Location & Local Information

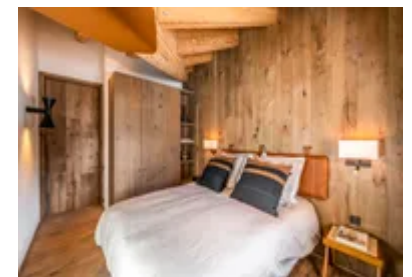
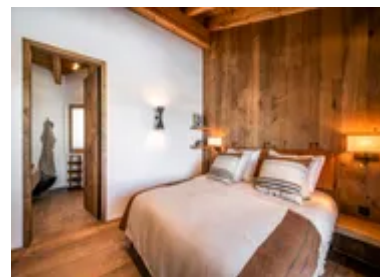
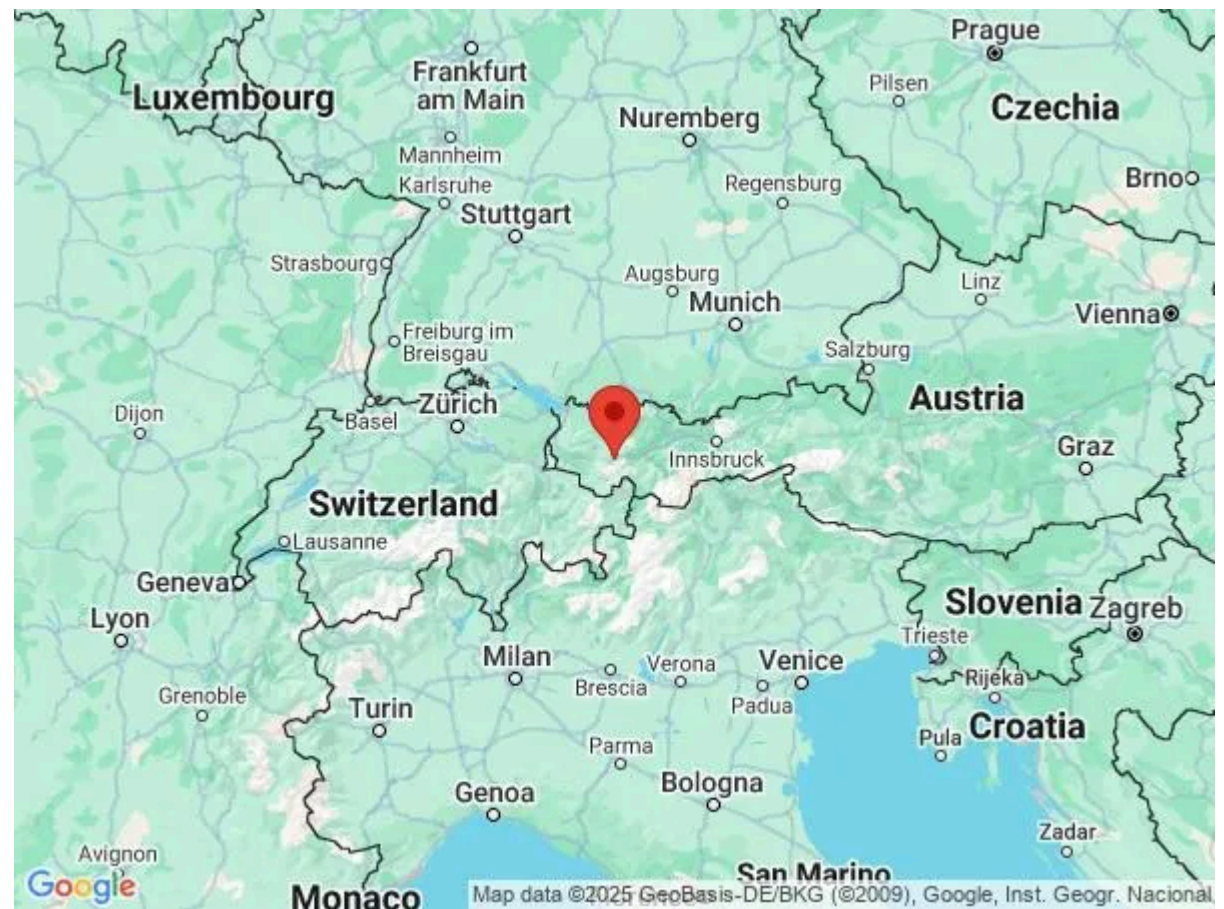
Nestled in the heart of the Austrian Alps, St Anton am Arlberg beckons with its allure of picturesque landscapes and exhilarating winter adventures. Known affectionately as St Anton, this charming village boasts a prime location at an altitude of 1,304 metres, ensuring a snowy playground from late November to the early spring thaw.

With a staggering 306 kilometres of ski slopes at your disposal, St Anton stands as the epicentre of Austria's premier skiing region. From gentle blue runs to challenging black slopes, there's something for every skill level among the 88 ski lifts dotting the mountainside. Glide effortlessly through the snow-cloaked landscape aboard gondola lifts, cable cars, chairlifts, and rope tows, soaking in panoramic vistas along the way.

For culinary connoisseurs, St Anton offers a feast for the senses, with nine Gault-Millau restaurants serving up delectable delights. Indulge in a gastronomic journey amid cosy alpine atmospheres, or opt for a casual lunch at one of the many charming eateries scattered throughout the village.

Beyond the slopes, St Anton enchants with its outdoor offerings, including a refreshing outdoor swimming pool and exhilarating mountain bike trails. Embark on the legendary Der Weisse Ring skiing route, a 22-kilometre odyssey renowned for its awe-inspiring vistas and rustic mountain lodges. Meanwhile, experienced skiers can tackle the formidable Run of Fame, an 85-kilometre circuit traversing St Anton, Lech Zürs, and Warth-Schröcken, offering a thrilling blend of challenge and beauty.

For those craving off-piste adventures, St Anton unveils a world of exploration, from the gentle slopes of Bachseite to the adrenaline-pumping descents of Schöngraben and the exhilarating terrain of the Milk Run. With endless possibilities and breathtaking landscapes, St Anton invites you to discover the true essence of Alpine bliss, where every turn reveals a new thrill and every moment is infused with the magic of the mountains.



## Local Amenities

Nearest Airport	Innsbruck (98.3 km)
Nearest Airport 2	Zürich (194 km)
Nearest Piste	Osthang 3 (150 m)
Nearest Ski Lift	Galzigbahn (600 m)
Nearest Ski Hire	Sporthaus Jennewein - SPORT 2000 (1.2 km)
Nearest Restaurant	MooserWirt (350 m)
Nearest Bar/Pub	Das Basecamp (1.3 km)
Nearest Supermarket	Spar (1.6 km)
Nearest Village	St Anton am Arlberg (1.8 km)
Nearest Town/City	Liechtenstein (90.7 km)
Nearest Train Station	St. Anton am Arlberg (1.5 km)

## What we love

- We loved the luxurious yet rustic interior of Apartment Elfe
- The whole family enjoyed making use of the chalet's communal sauna after a day on the slopes
- A mix of king-size beds and bunk beds made it easy to accommodate the whole group

## What you should know...

- All bedrooms feature ensuite bathrooms
- A concierge service is available to guests
- Some additional services, such as beauty treatments, massages and ski and snowboard lessons, are available on request for an additional fee

# Terms & Conditions

- **Arrival time:** Flexible.
- **Departure time:** Flexible.
- **Energy costs included?:** Yes, included in the rental price.
- **Linen & towels included?:** Yes, included in the rental price.
- **Pets welcome?:** Not allowed.
- **Changeover day:** Saturday.
- **End of stay cleaning available?:** Yes. However, guests are required to leave the accommodation clean, tidy and in the same condition as on their arrival. Any extra cleaning, laundry, maintenance and/or garbage disposal required will be charged against the security deposit.
- **Smoking Allowed?:** Smoking & Vaping are not permitted.
- **Minimum stay:** 7 nights.
- **Heating costs included?:** Yes, included in the rental price.
- **Tax:** Austrian Visitors Tax payable alongside balance, €5 per person, per night (youth over 15).
- **Internet access?:** WIFI access is included in the rental price.
- **Stag & Hen Do Allowed? :** Not allowed.