

Apartment Allee

Region: Ski Arlberg **Sleeps:** 12

Overview

Welcome to Apartment Allee, where luxury meets comfort in the heart of St Anton. Nestled within Chalet Fabiola, this spacious apartment caters to groups of 10 to 12 guests, offering an unparalleled retreat in the Austrian Alps.

As you enter the apartment, you're greeted by an elegant fusion of contemporary design and traditional Alpine charm. The entire first floor is yours to explore, boasting exquisite wooden finishes that exude warmth and charisma. With large panoramic windows framing breathtaking mountain vistas, the living space is bathed in natural light, inviting you to relax and unwind.

The heart of Apartment Allee is its open-plan layout, seamlessly blending the kitchen, dining, and living areas. The kitchen is a chef's delight, fully equipped with modern amenities and a convenient bar area for casual dining. Culinary delights await if you're enjoying breakfast prepared by our talented chef or grilling on the spacious patio.

In the dining area, rough-hewn chalet wood walls evoke a cosy Stube ambience, accentuated by a magnificent chandelier illuminating space for 12 guests to dine in style. A barbecue fire pit beckons outdoor gatherings, promising evenings filled with warmth and camaraderie against the Alpine backdrop.

Relaxation takes centre stage in the living area, where a circular sofa invites you to sink into plush cushions by the crackling electric fireplace. Admire intricate wood carvings depicting ski slopes while planning your adventures, or unwind on the flat-screen TV with Netflix.

Apartment Allee offers five luxurious bedrooms, including four double rooms and one quadruple room, each



boasting en-suite bathrooms with tasteful natural stone finishes. Whether you're enjoying a peaceful night's rest or indulging in a spa-like shower, comfort and refinement abound.

Outside, three spacious patios offer ample opportunities to bask in the mountain air, while communal amenities such as a ski cellar and wellness space with sauna add to your Alpine experience. With attentive concierge service and a host of additional offerings, including private chef services and off-piste guides, every moment at Apartment Allee promises indulgence and adventure.

Oliver's invites you to experience the epitome of Alpine luxury at Apartment Allee, where every detail is crafted to elevate your stay in St Anton.

Facilities

Hairdryer • Walking/Hiking Paths • Ski-In/Ski-Out • Spa/Massage • Catered • TV • Skiing • Paragliding • Wi-Fi/Internet • Wellness • Coffee Machine • Lakes and Mountains • Walk To Slopes • Bus/Shuttle To Slopes • Ski Lift Nearby • Wow Factor • Walk to Village • Easy By Train • Lift • Chef/Cook Included • Indoor Games • Cots (Cribs) • Gym/Fitness Room • Modern • Chalet Apartment • Pre-Stocked Fridge Available • Spa Treatments Available • On-Site Concierge • Breakfast Included • Catered • Bathroom Toiletries • Ideal for Kids • Ideal for Teens • Walk to Restaurant • Microwave • Safety Deposit Box • All Bedrooms En-Suite • Sauna/Steam • Working Fireplace/Woodburner • Heating • High Chair(s) • Parking Space • Outstanding Landscapes • Outdoor Pursuit & Activities • Tourist Towns & Villages

Interior & Grounds

The Apartment

Layout

Interior

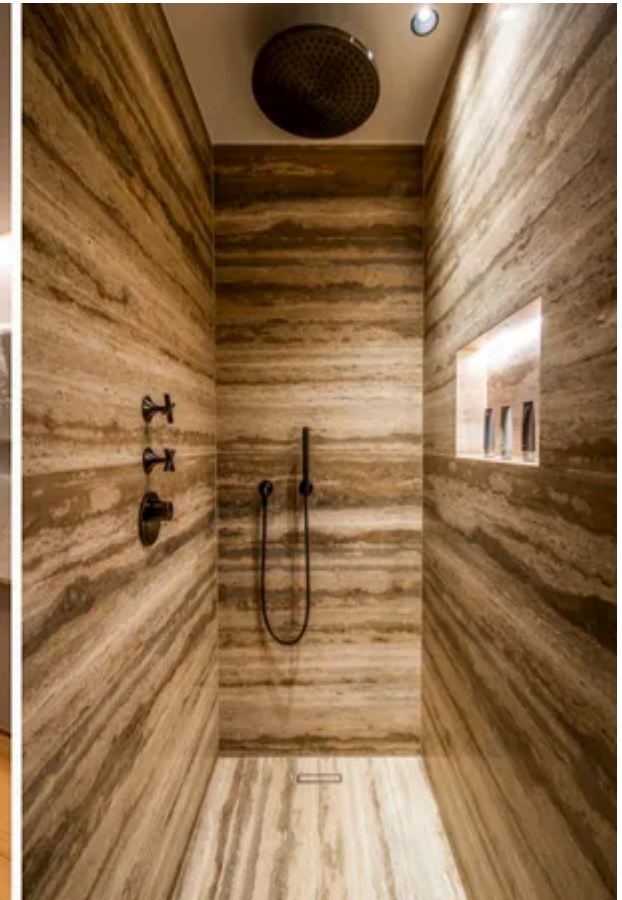
- Lounge space with circular sofa, fireplace and TV with Netflix
- Dining area with table and chairs for 12 guests
- Fully-equipped kitchen with bar and stools
- Bedroom with king-size bed and ensuite bathroom
- Bedroom with king-size bed and ensuite bathroom
- Bedroom with king-size bed and ensuite bathroom
- Bedroom with king-size bed and ensuite bathroom
- Bedroom with king-size bed and bunk bed (sleeps 2), ensuite bathroom

Outdoor spaces

- Patio x 3
- Firepit
- Dining area
- Underground parking for 2 cars
- Outdoor parking for 2 cars

Additional facilities

- Private Chef - **catered 5 nights a week and 7 mornings**
- Wifi
- TV
- Netflix
- Elevator
- Communal ski cellar
- Communal sauna
- Communal relaxation area
- Massage room and table
- Sports room including; treadmill and indoor bike
- Private chef
- Fridge
- Oven
- Microwave
- Professional Oven
- X2 Dishwasher
- Kitchen Island



- Nespresso Coffee Machine and pods
- Kitchen Exhaust Hood
- Blender / Mixer
- Toaster
- Kettle
- Juice Extractor
- Concierge
- Luxury Bvlgari® toiletries
- Cleaning service
- Luxury Austrian Style Property
- Central and underfloor heating
- Bathrobe and Slippers
- Entry and Gate Code upon arrival
- Automatic Gate
- Interphone for the property
- Hairdryer in every bathroom
- Firewood provided
- X2 Baby Cot
- Travel Cot
- Highchair
- Soundsystem
- Electric fireplace
- Bookcase
- Iron and ironing board
- Children's games
- Terrace furniture
- Porch entrance
- Underground parking for 2 cars
- Outside parking for 2 cars
- Safe in every bedroom
- Hairdryer in every bedroom
- Bar
- Printer
- Scanner

Location & Local Information

Nestled in the heart of the Austrian Alps, St Anton am Arlberg beckons with its allure of picturesque landscapes and exhilarating winter adventures. Known affectionately as St Anton, this charming village boasts a prime location at an altitude of 1,304 metres, ensuring a snowy playground from late November to the early spring thaw.

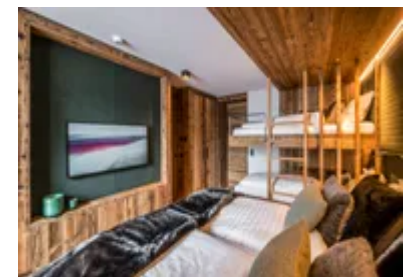
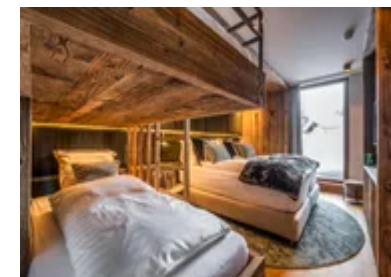
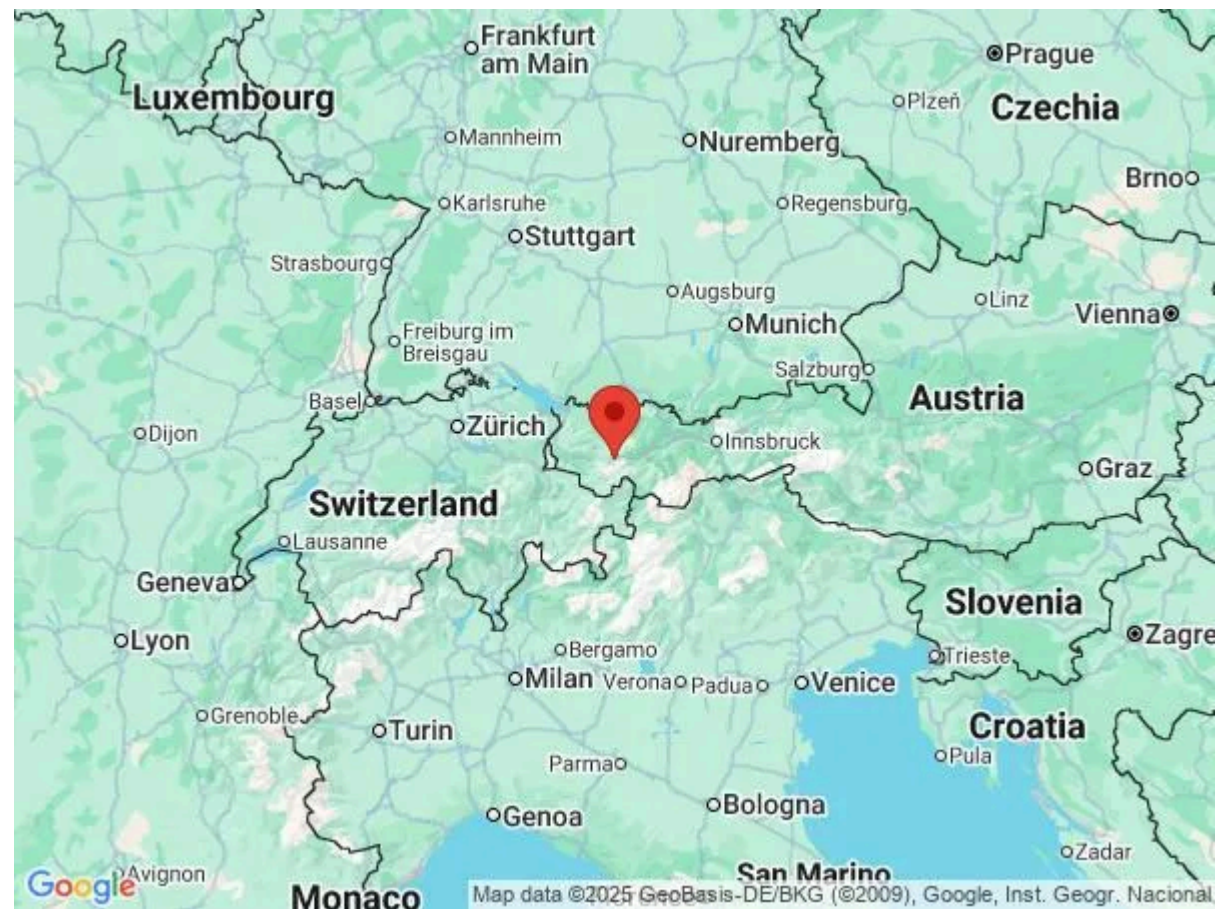
With a staggering 306 kilometres of ski slopes at your disposal, St Anton stands as the epicentre of Austria's premier skiing region. From gentle blue runs to challenging black slopes, there's something for every skill level among the 88 ski lifts dotting the mountainside. Glide effortlessly through the snow-cloaked landscape aboard gondola lifts, cable cars, chairlifts, and rope tows, soaking in panoramic vistas along the way.

For culinary connoisseurs, St Anton offers a feast for the senses, with nine Gault-Millau restaurants serving up delectable delights. Indulge in a gastronomic journey amid cosy alpine atmospheres, or opt for a casual lunch at one of the many charming eateries scattered throughout the village.

Beyond the slopes, St Anton enchants with its outdoor offerings, including a refreshing outdoor swimming pool and exhilarating mountain bike trails. Embark on the legendary Der Weisse Ring skiing route, a 22-kilometre odyssey renowned for its awe-inspiring vistas and rustic mountain lodges.

Meanwhile, experienced skiers can tackle the formidable Run of Fame, an 85-kilometre circuit traversing St Anton, Lech Zürs, and Warth-Schröcken, offering a thrilling blend of challenge and beauty.

For those craving off-piste adventures, St Anton unveils a world of exploration, from the gentle slopes of Bachseite to the adrenaline-pumping descents of Schöngraben and the exhilarating terrain of the Milk Run. With endless possibilities and breathtaking landscapes, St Anton invites you to discover the true essence of Alpine bliss, where



every turn reveals a new thrill and every moment is infused with the magic of the mountains.

Local Amenities

Nearest Airport	Innsbruck (98.3 km)
Nearest Airport 2	Zürich (194 km)
Nearest Piste	Osthang 3 (150 m)
Nearest Ski Lift	Galzigbahn (600 m)
Nearest Ski Hire	Sporthaus Jennewein - SPORT 2000 (1.2 km)
Nearest Restaurant	MooserWirt (350 m)
Nearest Bar/Pub	Das Basecamp (1.3 km)
Nearest Supermarket	Spar (1.6 km)
Nearest Village	St Anton am Arlberg (1.8 km)
Nearest Town/City	Liechtenstein (90.7 km)
Nearest Train Station	St. Anton am Arlberg (1.5 km)

What we love

- We loved the total luxury of Apartment Allee, from the stylish interior complete with a sumptuous bar area, to additions such as a private chef and concierge
- The firepit and outdoor dining area allowed for alfresco meals with the whole group
- It was wonderful to be able to make use of a communal sauna during our stay

What you should know...

- One of the bedrooms features both a king-size bed and a bunk bed - ideal for families with children
- Services such as beauty treatments, massages and ski and snowboard lessons are available on request for an additional fee
- Each bedroom features an ensuite bathroom for your convenience
- Please note, Apartment Allee is catered, which includes; 7x breakfast, 5x afternoon snack and 5x three-course dinner. Soft drinks, coffee, tea, beer and wine included. For accomodation and breakfast only board basis, please see Apartment Araine (<https://www.oliverstravels.com/ski/austria/ski-alberg/st-anton/apartment-ariane/>)

Terms & Conditions

- **Arrival time:** Flexible.
- **Departure time:** Flexible.
- **Energy costs included?:** Yes, included in the rental price.
- **Linen & towels included?:** Yes, included in the rental price.
- **Pets welcome?:** Not allowed.
- **Other Ts and Cs:** The 3/4 board formula includes the below:

 7x breakfast, 5x afternoon snack and 5x three-course dinner. Soft drinks, coffee, tea, beer and wine included.
- **Changeover day:** Sunday.
- **End of stay cleaning available?:** Yes. However, guests are required to leave the accommodation clean, tidy and in the same condition as on their arrival. Any extra cleaning, laundry, maintenance and/or garbage disposal required will be charged against the security deposit.
- **Smoking Allowed?:** Smoking & Vaping are not permitted.
- **Minimum stay:** 7 nights.
- **Heating costs included?:** Yes, included in the rental price.
- **Tax:** Austrian Visitors Tax payable alongside balance, €5 per person, per night (youth over 15).
- **Internet access?:** WIFI access is included in the rental price.
- **Stag & Hen Do Allowed? :** Not allowed.