

# Apartment Schnee

Region: Ski Arlberg    Sleeps: 6

---

## Overview

Welcome to Apartment Schnee, your gateway to a luxurious Alpine retreat nestled within the exquisite Chalet Fabiola. As you step into this ground floor apartment, you're greeted by a harmonious blend of traditional charm and contemporary flair, creating an unmistakably Alpine atmosphere that's as inviting as it is elegant.

With enough space to comfortably accommodate 6 guests, Apartment Schnee boasts a captivating L-shaped layout that effortlessly integrates the dining room, kitchen, and seating area. Natural stone and fine wood adorn the interior, accentuating the space's timeless appeal. The kitchen, equipped with state-of-the-art appliances, features a sleek island and splashback crafted from dark natural stone, while an oval wooden table offers a cosy spot for meals.

In the living space, a modern sofa and two inviting armchairs beckon you to unwind after a day on the slopes. A contemporary electric fireplace adds warmth and ambience, complemented by a large flat-screen TV with Netflix for your entertainment.

Venture further into Apartment Schnee, and you'll discover three double bedrooms, each exuding style and comfort with king-size beds and tasteful furnishings. Three bathrooms offer convenience and luxury, complete with premium toiletries for your indulgence.

But the apartment's allure doesn't end indoors. Step outside to discover two spacious patios, where you can soak in the crisp Alpine air and bask in panoramic views of the surrounding landscape. Whether you're savouring breakfast al fresco or unwinding with a glass of wine under the stars, these outdoor spaces offer a tranquil retreat amidst nature's beauty.



As a guest of Apartment Schnee, you'll enjoy access to a range of amenities, from the communal ski cellar to the wellness space featuring a sauna for relaxation after a day of adventure. And with the option of enlisting a private chef or accessing concierge services, every aspect of your stay is tailored to perfection.

From the warm welcome with a refreshing drink to the impeccable service provided by our concierge, your experience at Apartment Schnee is defined by luxury, comfort, and unparalleled hospitality. Whether you're seeking thrilling outdoor pursuits or tranquil moments of reprieve, Apartment Schnee invites you to indulge in the ultimate Alpine escape.

## Facilities

Ski-In/Ski-Out • Ski Lift Nearby • Bus/Shuttle To Slopes • Walk To Slopes • Lakes and Mountains • Coffee Machine • Hairdryer • Paragliding • Self-Catered • Skiing • Spa/Massage • Walking/Hiking Paths • Wi-Fi/Internet • TV • Cots (Cribs) • Chef/Cook Available • Easy By Train • Gym/Fitness Room • Lift • Chef/Cook Included • Walk to Village • Instagrammable • Modern • Chalet Apartment • Breakfast Included • Bathroom Toiletries • Ideal for Kids • Ideal for Teens • Walk to Restaurant • Dishwasher • Microwave • Safety Deposit Box • All Bedrooms En-Suite • Sauna/Steam • Working Fireplace/Woodburner • Heating • High Chair(s) • Parking Space • Outstanding Landscapes • Outdoor Pursuit & Activities • Tourist Towns & Villages

# Interior & Grounds

## The Apartment

### Layout

#### Interior

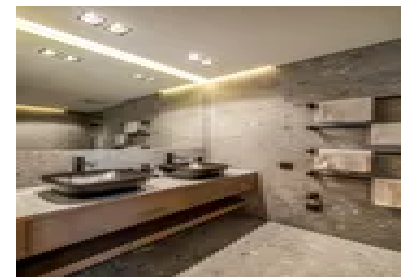
- Lounge with sofas, chairs, fireplace and TV with Netflix
- Dining area with table and chairs for 6 guests
- Fully-equipped kitchen with breakfast bar and stool seating
- Bedroom with king-size bed and ensuite bathroom
- Bedroom with king-size bed and ensuite bathroom
- Bedroom with king-size bed and ensuite bathroom

#### Outdoor spaces

- Patio x 2
- Underground parking for 2 cars

#### Additional facilities

- Wifi
- TV
- Netflix
- Communal ski cellar
- Boots heater
- Communal sauna
- Communal relaxation area
- Massage room and table
- Sports room including; treadmill and indoor bike
- Private chef
- Fridge
- Microwave
- Professional Oven
- Dishwasher
- Kitchen Island
- Nespresso Coffee Machine and pods
- Kitchen Exhaust Hood
- Blender / Mixer
- Toaster
- Kettle
- Juice Extractor
- Concierge service
- Luxury toiletries



- Cleaning service
- Luxury Austrian Style Property
- Central and underfloor heating
- Bathrobe and Slippers
- Entry and Gate Code upon arrival
- Automatic Gate
- Interphone for the property
- Hairdryer in every bathroom
- Firewood provided
- X2 Baby Cot
- Travel Cot
- Highchair
- Soundsystem
- Electric fireplace
- Bar
- Iron and ironing board
- Terrace furniture



## Location & Local Information

Located in the heart of the Austrian Alps, St Anton am Arlberg beckons with its allure of picturesque landscapes and exhilarating winter adventures. Known affectionately as St Anton, this charming village boasts a prime location at an altitude of 1,304 metres, ensuring a snowy playground from late November to the early spring thaw.

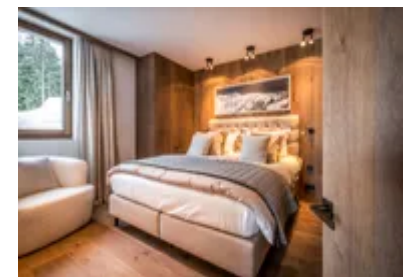
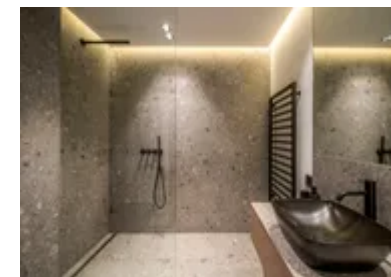
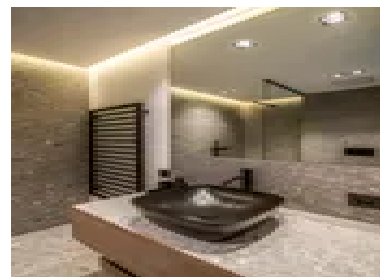
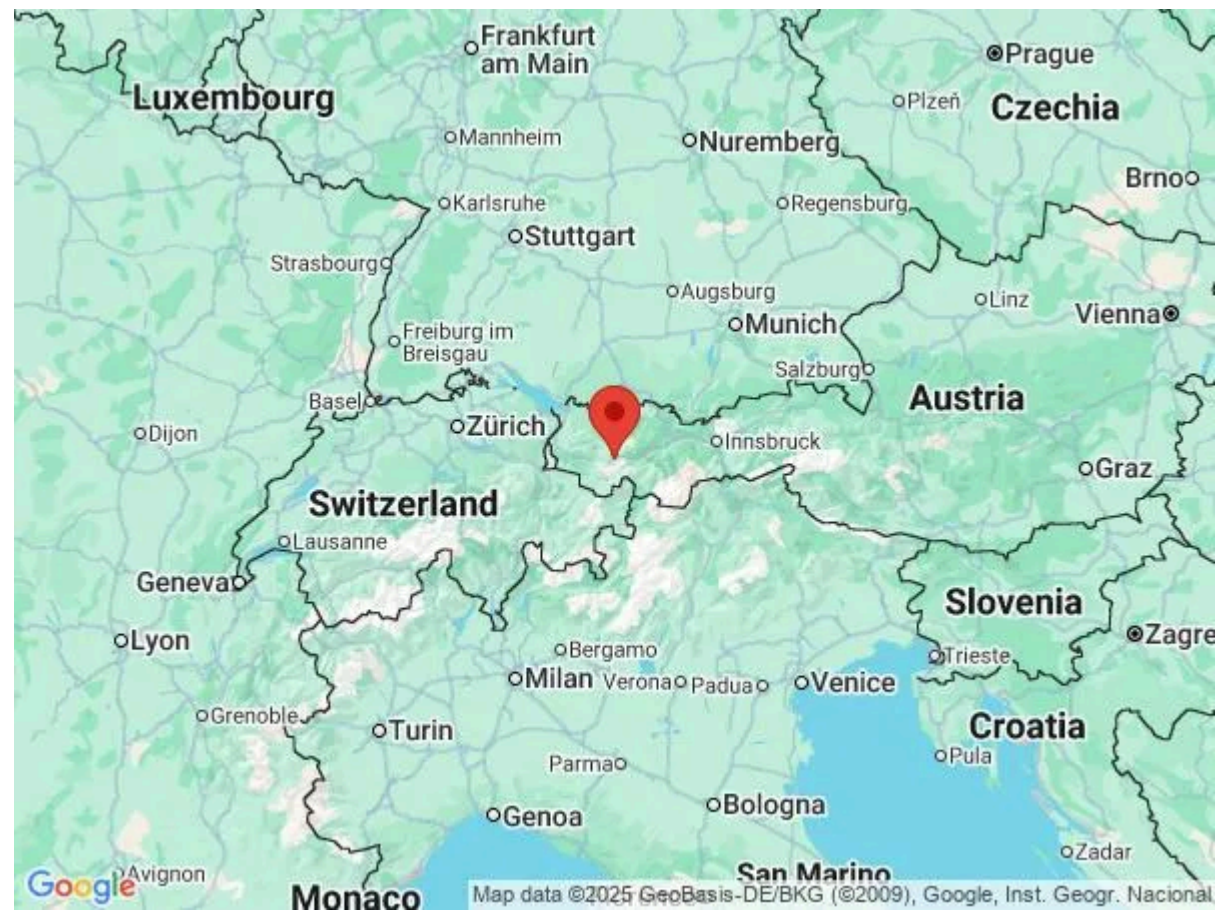
With a staggering 306 kilometres of ski slopes at your disposal, St Anton stands as the epicentre of Austria's premier skiing region. From gentle blue runs to challenging black slopes, there's something for every skill level among the 88 ski lifts dotting the mountainside. Glide effortlessly through the snow-cloaked landscape aboard gondola lifts, cable cars, chairlifts, and rope tows, soaking in panoramic vistas along the way.

For culinary connoisseurs, St Anton offers a feast for the senses, with nine Gault-Millau restaurants serving up delectable delights. Indulge in a gastronomic journey amid cosy alpine atmospheres, or opt for a casual lunch at one of the many charming eateries scattered throughout the village.

Beyond the slopes, St Anton enchants with its outdoor offerings, including a refreshing outdoor swimming pool and exhilarating mountain bike trails.

Embark on the legendary Der Weisse Ring skiing route, a 22-kilometre odyssey renowned for its awe-inspiring vistas and rustic mountain lodges. Meanwhile, experienced skiers can tackle the formidable Run of Fame, an 85-kilometre circuit traversing St Anton, Lech Zürs, and Warth-Schröcken, offering a thrilling blend of challenge and beauty.

For those craving off-piste adventures, St Anton unveils a world of exploration, from the gentle slopes of Bachseite to the adrenaline-pumping descents of Schöngraben and the exhilarating terrain of the Milk Run. With endless possibilities and breathtaking landscapes, St Anton invites you to discover the true essence of Alpine bliss, where



every turn reveals a new thrill and every moment is infused with the magic of the mountains.

Local Amenities

Nearest Airport	Innsbruck (98.3 km)
Nearest Airport 2	Zürich (194 km)
Nearest Piste	Osthang 3 (150 m)
Nearest Ski Lift	Galzigbahn (600 m)
Nearest Ski Hire	Sporthaus Jennewein - SPORT 2000 (1.2 km)
Nearest Restaurant	MooserWirt (350 m)
Nearest Bar/Pub	Das Basecamp (1.3 km)
Nearest Supermarket	Spar (1.6 km)
Nearest Village	St Anton am Arlberg (1.8 km)
Nearest Town/City	Liechtenstein (90.7 km)
Nearest Train Station	St. Anton am Arlberg (1.5 km)

## What we love

- We loved the cosy charm and spacious layout of Apartment Schnee
- The two patio spaces offered wonderful spaces for enjoying alfresco breakfasts and after-dinner drinks with a view
- The whole group enjoyed making use of the chalet's communal sauna after a day on the slopes

## What you should know...

- Guests of Apartment Schnee can enjoy a complimentary breakfast service on request
- Services such as ski passes, off-piste guides and beauty treatments are available to guests at an additional cost
- Ensuite bathrooms ensure privacy and convenience for guests

# Terms & Conditions

- **Arrival time:** Flexible.
- **Departure time:** Flexible.
- **Energy costs included?:** Yes, included in the rental price.
- **Linen & towels included?:** Yes, included in the rental price.
- **Pets welcome?:** Not allowed.
- **Changeover day:** Saturday.
- **End of stay cleaning available?:** Yes. However, guests are required to leave the accommodation clean, tidy and in the same condition as on their arrival. Any extra cleaning, laundry, maintenance and/or garbage disposal required will be charged against the security deposit.
- **Smoking Allowed?:** Smoking & Vaping are not permitted.
- **Minimum stay:** 7 nights.
- **Heating costs included?:** Yes, included in the rental price.
- **Tax:** Austrian Visitors Tax payable alongside balance, €5 per person, per night (youth over 15).
- **Internet access?:** WIFI access is included in the rental price.
- **Stag & Hen Do Allowed? :** Not allowed.