

# Noblestone Castle

**Region:** East Of England   **Sleeps:** 30

---

## Overview

Set spectacularly among majestic grounds and within its very own moat, the 15-bedroom Noblestone Castle is a stunning holiday venue accommodating up to 30 guests in medieval opulence and modern comfort. Built in 1455 during the reign of Henry VI, Noblestone Castle has been opened to the public for the first time in almost 600 years, making it the perfect opportunity to enjoy its endless interiors and sprawling grounds.

Upon entering this regal abode via the drawbridge, guests are greeted by a grand foyer, setting the tone for the opulent experience that awaits. Moving along the grand hallway reveals the castle's tasteful period features including an ornate floor and vast staircase climbing up to the various interconnected levels, nooks, and crannies of the home.

Off the interlocking hallways guests can enjoy four extravagant reception rooms, including a grand, oak-panelled dining room and a billiards room complete with table tennis table, snooker table, and board games. Other reception rooms boast plush sitting rooms bounded by centuries-old artworks and warmed by open fireplaces.

The expansive and fully fitted family kitchen with its own Aga cooker ensures the best of modern-day hospitality service or the most generous of spaces for culinary enthusiasts among the guests. There's also a separate and more intimate prep kitchen available.

Arranged variously throughout the castle's levels are 15 well-appointed bedrooms, each a haven of comfort and a taste of regal luxury with sumptuous furnishings and elegant ambiance. The master suite is a palatial retreat, boasting a king-sized bed, a private reception area, and an ensuite bathroom adorned with marble accents. The



remaining bedrooms, each uniquely designed, offer a variety of sleeping arrangements to cater to the diverse needs of your group.

The outdoor spaces are equally sprawling and impressive, featuring manicured gardens, a swan-swept moat, croquet lawn, and multiple seating areas for al fresco dining.

As the sun sets, gather around the fireplace in the elegant lounge or take a leisurely stroll through the sprawling grounds, marvelling at the enchanting surroundings. Your Noblestone Castle getaway awaits – a resplendent escape into the lap of luxury and refinement.

## Facilities

Walking/Hiking Paths • Weddings • Washing Machine • Historical Sites • Coffee Machine • Wi-Fi/Internet • Golf Nearby • Ideal for Xmas/NY • Chateaux & Castles • TV • Hairdryer • Ideal for Parties • Wow Factor • Walk to Village • Maid Service Available • Pool/Snooker • Table Tennis • Quirky (Unique) • Dry Hire Option • Marquee Hire Permitted • Has Discount • Special Offer • Chef/Cook Available • Indoor Games • Games Room • Rural Location • Outdoor Ceremony • Flexible Catering Options • Allow External Caterers • Nearby Church/Chapel • Animal farm • Aquarium • Kid-friendly excursions • Catering Available • Board games • Croquet • Stair gates • Tumble Dryer • Dishwasher • Microwave • AGA • Outdoor Games • Table Football • Working Fireplace/Woodburner • Fire Pit • Heating • High Chair(s) • Parking Space • Outdoor Pursuit & Activities • Tourist Towns & Villages

# Interior & Grounds

## Noblestone Castle

### *Interior*

- Four multifunctional reception rooms, two of which feature stunning open fires
- Oak panelled dining room seating up to thirty people
- Family kitchen including AGA, as well as a separate prep kitchen
- Billiards room featuring table tennis, snooker table, board games, and a bar
- Optional boardroom setup with use of 60" TV, flipcharts and PA system

### *Bedrooms*

- 3 x Twin bedroom
- 3 x Bedroom with zip and link bed (two twins or one double)
- 5 x bedrooms with double bed
- 4 x Bedroom with double bed, ensuite bathroom
- Master bedroom with king-sized bed, ensuite bathroom, and adjoining reception room.
- 5 x Family bathroom with bath/shower
- 3 x Separate WC

### *Outside Grounds*

- Outdoor seating areas that include fire pits and a barbecue
- Spacious, manicured garden
- Garden furniture
- Summer House
- 450 square metre marquee footprint or helicopter landing
- Croquet lawn
- Sheltered stone terrace

### *Facilities*

- Wi-Fi
- Fully equipped kitchen
- Washing machine/Dryer
- 3 x Fireplaces
- Wood stove
- AC
- Parking
- Garden
- BBQ
- Summer House
- Croquet Lawn
- Table tennis table
- Snooker table
- Board games



## Location & Local Information

Set stunningly in the Norfolk countryside only a short drive from the north Norfolk coastline and the Royal estate of Sandringham, Noblestone Castle is as elegant as it is imposing. Boasting its own moat, embattled parapets, and corner turrets dating back to the 1455, this endearing estate is surrounded by acres of picturesque, rolling farmland.

Conveniently located just outside the charming village of Middleton (3-minute drive/24-minute walk), here guests can stop in at a café, pub, or restaurant. What is more, the Middleton Hall Golf Club means there's ample opportunity to hit the links.

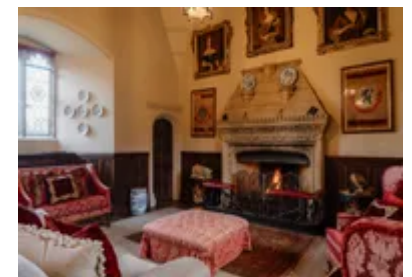
King's Lynn (12-minute drive) boasts a bevvvy of independent shops, cafes, and restaurants, not to mention its stunning medieval architecture and thriving art scene.

The private country retreat of Britain's monarchs since 1862, Sandringham Estate (15-minute drive) has many features open to the public, including the Royal Parkland – 600 acres of woodland and trails. Depending on whether the royal family is at home, the estate itself can also be explored, as well as a fascinating museum housed in the old stables

There are a number of breathtaking walks through the countryside easily accessible from the castle, as well as the award-winning Watatunga Safari Park (11-minute drive). Set across 170 acres of woodland, grassland, and lakes, Watatunga Safari Park is dedicated to the conservation of endangered deer, antelope, buffalo and other wildlife.

Another great explorative option is the short trip to the north Norfolk coastline. Spend a day on the golden sands of the Wells-next-the-Sea Beach (50-minute drive), and make sure to keep an eye out for seals at the nearby Blakeney Point!

Or if you feel like wetting the whistle a little, the Cobble Hill



Vineyard and Winery (35-minute drive) offers a range of tastings and tours.

Local Amenities

Nearest Airport	London Stanstead Airport (120 km)
Nearest Bar/Pub	The Gate Inn (1.5 km)
Nearest Beach	Hunstanton Beach (29.5 km)
Nearest Ferry Port	Felixstow Ferry Port (131 km)
Nearest Golf	Kings Lynn Golf Club (14 km)
Nearest Restaurant	Middletons Steakhouse & Grill (2 km)
Nearest Shop	Middleton Post Office and Stores (1.5 km)
Nearest Supermarket	Sainsbury's, King's Lynn (6.5 km)
Nearest Town/City	King's Lynn (8.5 km)
Nearest Train Station	King's Lynn Train Station (8 km)
Nearest Village	Middleton (2 km)

## What we love

- Noblestone Castle epitomises the 'stately home' – all it takes is a short walk through the castle's manicured, moat-surrounded garden with its conical hedges to feel as if you've fallen down a rabbit hole and found yourself in Tudor times.
- The castle's stunning selection of reception rooms mean there is no shortage of places to relax amidst opulence and refinement. We particularly enjoyed the games room with its billiards table, table tennis table, and board games.
- The castle's opulence comes into its own in each of the well-appointed bedrooms. When you're sleeping in a king-sized bed in a king-sized castle, well, you're sure to get a good night's rest.

## What you should know...

- The moat is unfenced so please be mindful of children playing by its slopes.

# Terms & Conditions

- **Security deposit:** £1000 charged to client's credit card as a pre-authorisation at least 2 weeks prior to arrival and refunded two weeks after departure, subject to full inspection.
- **Arrival time:** 4:00 p.m.
- **Departure time:** 11:00 a.m.
- **Energy costs included?:** Yes.
- **Linen & towels included?:** Yes.
- **Pets welcome?:** Not allowed.
- **Other Ts and Cs:** Weddings and other special events are permitted on request only and subject to prior arrangement with the owner and additional charges.
- **Changeover day:** Flexible.
- **End of stay cleaning available?:** No. £750 payable to Oliver's Travels at the time of balance payment. This is for a standard changeover clean. Guests should be respectful of the property and leave the accommodation in a clean and tidy condition. Any extra cleaning, laundry, maintenance and/or rubbish disposal required will be charged against the security deposit.
- **Smoking Allowed?:** Smoking and vaping are only permitted outside. Please dispose of your cigarette butts considerably.
- **Minimum stay:** 3 nights during Christmas and New Year. 2 nights during all other periods. Weekly rentals are considered on a case-by-case basis - please enquire.
- **Heating costs included?:** Yes.