

Villa Papalina

Region: Brač Sleeps: 8

Overview

Nestled on the captivating island of Brač, in the picturesque village of Sutivan, the modern Villa Papalina beckons as a sanctuary of tranquillity, promising an escape from the frenetic pace of everyday life. Built-in 2021 with a contemporary architectural style, this haven offers a sprawling 180 m2 of living space, fully air-conditioned to accommodate a maximum of eight or an optimal six guests.

As you step onto the ground floor, a cosy living room welcomes you with comfortable seating, two armchairs, a TV, and a coffee table. The sofa, if need be, transforms into an additional bed for up to two persons.

Adjacent to this inviting space is an exit to an outdoor terrace, perfect for enjoying the refreshing island breeze. A well-appointed dining area with a table for eight seamlessly connects to a modern kitchen, fully equipped for crafting delightful family meals. Also gracing the ground floor is a bedroom with an en-suite bathroom boasting a convenient shower cabin and direct access to the terrace.

Venture upstairs, and you'll discover two more bedrooms, each adorned with en-suite bathrooms featuring luxurious shower cabins. Step onto the terraces from these rooms and be captivated by the breathtaking sea views, a perfect backdrop for enjoying your morning coffee.

Stepping outside, the villa's allure continues with a spacious outdoor terrace that unfolds a haven of possibilities. Dive into the heated pool, a generous 45 m2 aquatic retreat with a depth of 1.5 m, operating on an electrolysis system and illuminated for a magical night-time experience. Surrounding the pool are six sun loungers, creating a perfect oasis for soaking up the sun's



rays while, adjacent, a covered outdoor dining table awaits, accompanied by an outdoor charcoal or wood barbecue, ideal for crafting traditional meat or fish dishes. The poolside lounge area offers ample seating and a table, inviting you to savour cocktails and conversation during the warm summer days.

Inside, Villa Papalina has additional amenities, including a high chair, a crib, a washing machine, and an iron, to ensure your stay is both comfortable and convenient. The property is newly decorated and fenced and offers three private parking spaces within the courtyard.

Beyond the comforts of the villa, Brač unveils a treasure trove of attractions, including the oldest settlement of Škrip, the famous stone quarry, the Museum of the Island of Brač, and the captivating Blaca Desert with its 17th-century monastery housing the second-largest telescope in Europe.

Immerse yourself in the beauty of Brač, explore its historic gems, and relish the unique gastronomic offerings. Villa Papalina stands not just as a holiday retreat but as a gateway to the island's rich tapestry of history, culture, and natural wonders.

Facilities

Wi-Fi/Internet • Villa • Air-Con • Beach Nearby • Walk to Village • Walk to Beach • Cots (Cribs) • Private Pool • Heated Pool • Ideal for Babies & Toddlers • Ideal for Kids • Ideal for Teens • Pets on Request • Walk to Restaurant • Washing Machine • Dishwasher • Microwave • Coffee Machine • Hairdryer • All Bedrooms En-Suite • Ground Floor Bed & Bath • TV • High Chair(s) • Parking Space • Walking/Hiking Paths • Outstanding Landscapes • Outdoor Pursuit & Activities • Tourist Towns & Villages

Interior & Grounds

The Villa

Ground Floor

- Fully equipped kitchen
- Open plan living and dining area
- Bedroom with an en-suite shower room

First Floor

- Two more bedrooms with en-suite shower rooms

Exterior

- Heated swimming pool (45m2, depth: 1.5m)
- Outdoor shower
- Terrace with six sun loungers
- Poolside lounge area
- Covered outdoor dining area
- Charcoal/wood barbecue

Additional Facilities

- Air conditioning
- Wifi
- Television
- Coffee machine
- Microwave
- Dishwasher
- Washing machine
- Ironing facilities
- Hairdryer
- Highchair
- Baby cot
- Three private parking spaces



Location & Local Information

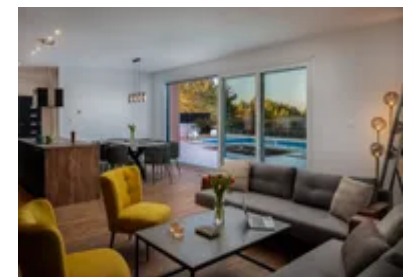
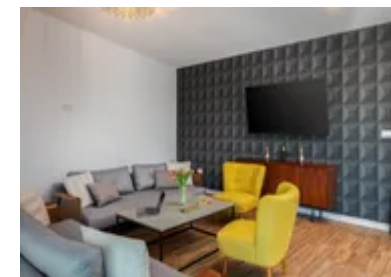
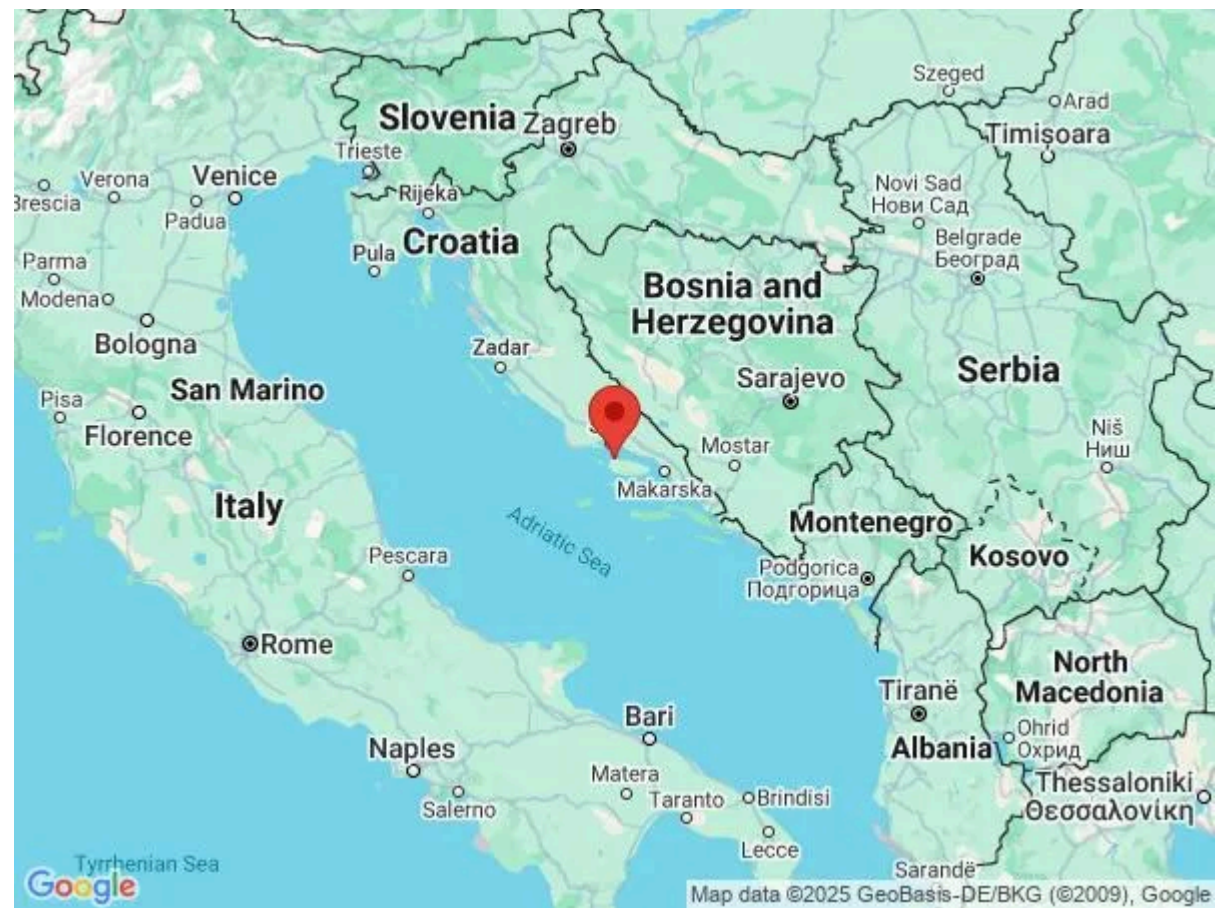
Perched on the enchanting island of Brač, in the charming village of Sutivan, Villa Papalina is a delightful retreat surrounded by a tapestry of attractions and amenities that paint the perfect backdrop for a memorable escape. Brač, renowned for its many charms, boasts the famed Zlatni Rat beach, a natural wonder that gracefully changes its shape in response to the whims of weather conditions.

The village of Sutivan, where the villa finds its home, exudes a tranquil allure, inviting you to unwind and revel in the unhurried pace of island life. As you venture beyond the villa's confines, Brač unfolds its magic, boasting a staggering 116 churches, a testament to its status as the most sacral island in the Mediterranean.

The island's oldest settlement, Škrip, beckons with a captivating journey through history, inviting you to explore its cobblestone streets and immerse yourself in the rich heritage of Brač. The famous stone quarry, the Museum of the Island of Brač, and an 18th-century church add layers of cultural exploration, allowing you to delve into the island's past.

A true gem in the island's crown is the Blaca Desert, a vast expanse stretching across 56 hectares from Dragovoda to Blaca Bay. Within this awe-inspiring desert lies a monastery, a marvel of architectural and historical significance. The 17th-century church, residential buildings, observatory, and library housed within the monastery showcase the island's deep-rooted connection to spirituality and learning. Notably, the monastery harbours the second-largest telescope in Europe, a celestial marvel that adds a touch of wonder to your island odyssey.

Back in the village of Sutivan, you'll find the welcoming embrace of local gastronomy, offering a delectable array of flavours unique to Brač. The allure of the Banj, Bili rat, Likva, or Bunta beaches invites you to bask in the island's natural beauty, where the crystal-clear Adriatic Sea meets the sun-kissed shores.



Villa Papalina stands as more than just a retreat; it's a gateway to Brač's treasures. As you explore the area, you'll find that the villa's location offers not just a place to stay but a canvas upon which to paint your own vibrant memories of Brač's captivating landscapes, rich history, and warm hospitality.

Local Amenities

Nearest Airport	Split Airport (via ferry) (48.5km)
Nearest Ferry Port	Supetar (8km)
Nearest Town	Sutivan (800m)
Nearest Beach	Pebble beach (280m)
Nearest Supermarket	Studenac Market (1.3km)

What we love

- We loved the modern, stylish interior of Villa Papalina
- The villa has a private pool - need we say more!?
- The sea views are breathtaking, so don't forget to pack your camera!

What you should know...

- Villa Papalina accommodated six guests across three double bedrooms, with two additional guests accommodated on the double sofa bed in the lounge area.
- A cot and highchair are included for the comfort of the youngest guests.
- All bedrooms feature double beds, TVs and ensuite showers.

Terms & Conditions

- **Security deposit:** €300 paid in cash to the owner upon arrival and refunded upon departure, subject to full inspection
- **Arrival time:** 4.00 p.m.
- **Departure time:** 10.00 a.m.
- **Energy costs included?:** Yes, included in the rental price.
- **Linen & towels included?:** Yes, included in the rental price.
- **Pets welcome?:** On request only and with prior agreement with the owner.
- **Changeover day:** Flexible
- **End of stay cleaning available?:** Yes. However, guests are required to leave the accommodation clean, tidy and in the same condition as on their arrival. Any extra cleaning, laundry, maintenance and/or rubbish disposal required will be charged against the security deposit.
- **Smoking Allowed?:** Smoking & Vaping are not permitted.
- **Minimum stay:** 7 nights from 13.07 to 30.08.
 5 nights during all other periods.
- **Heating costs included?:** Yes, included in the rental price.
- **Tax:** Included in the rental rate.
- **Internet access?:** Complimentary Wi-Fi internet access is included in rental price. It is good to note that the speed is dependent on the local provider and technical issues may cause reduced speed or cut of service.