

Apartment Galletti

Region: Tuscany **Sleeps:** 6

Overview

Apartment Galletti offers families a welcoming and well-appointed retreat in the heart of Florence. With three spacious double bedrooms, including a suite with a walk-in closet and private bathroom, it's perfectly suited for those travelling with kids or in larger groups. A second bathroom, a fully equipped kitchen, and a bright living and dining area make it easy for families to settle in and feel at home. The two private terraces provide fresh-air space for morning breakfasts or quiet moments, ideal for both children and parents.

The apartment's central location on Via Pietrapiana places you close to Florence's most family-friendly attractions. You're just a stroll away from Piazza dei Ciompi and Piazza Santa Croce, where children can explore open spaces while parents enjoy the historic surroundings. With gelaterias, cafés, and shops nearby, Apartment Galletti is the perfect starting point for a relaxing, culturally rich family holiday in Florence.

Facilities

Air-Con • TV • Washing Machine • City Homes & Apartments • Coffee Machine • Wi-Fi/Internet • Historical Sites • Hairdryer • Easy By Train • Ideal for Babies & Toddlers • Ideal for Kids • Ideal for Teens • Walk to Restaurant • <1hr to Airport • Dishwasher • Heating • Outdoor Pursuit & Activities • Tourist Towns & Villages



Interior & Grounds

Interior

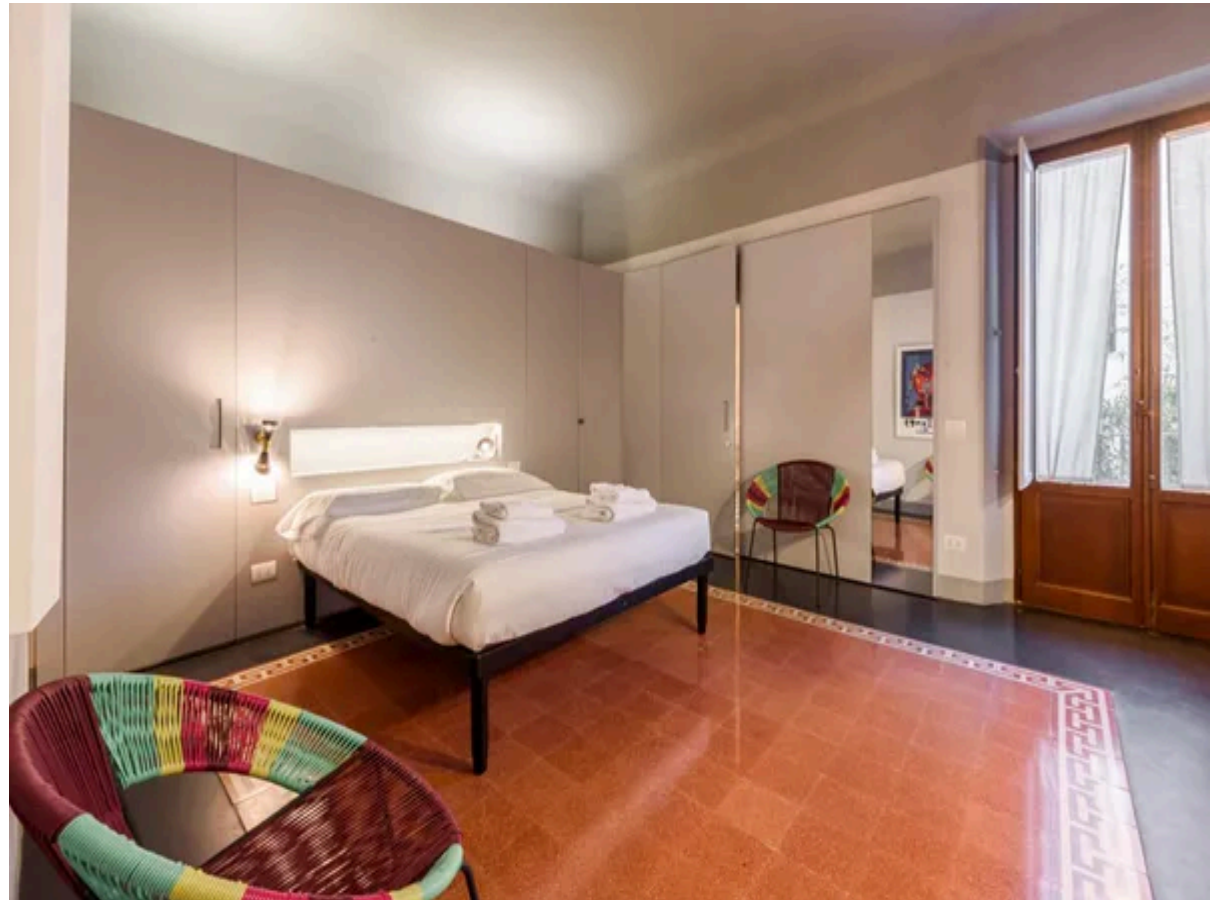
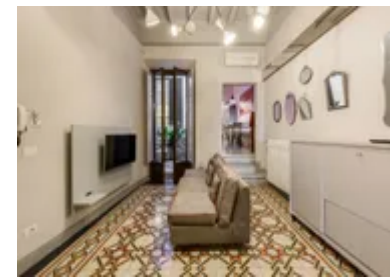
- Large living room with single sofa bed
- Fully equipped kitchen
- Dining room
- Bedroom 1: Double bed with ensuite and walk-in closet
- Bedroom 2: Double bed
- Bedroom 3: Twin beds
- Bathroom

Exterior

- Two terraces

Additional Facilities

- Wi-Fi
- Air-conditioning
- Heating
- Washing machine
- Dishwasher



Location & Local Information

Apartment Galletti enjoys a prime location in Florence’s historic centre, making it an ideal base for travellers eager to explore the city’s artistic and cultural heritage. Set along lively Via Pietrapiana, the apartment is just a short stroll from iconic landmarks like Piazza dei Ciompi and the magnificent Piazza Santa Croce. This strategic position allows guests to immerse themselves in Florence’s vibrant street life, where centuries of history unfold around every corner.

The neighbourhood is teeming with charm, quaint cafés, traditional trattorias, and artisanal boutiques line the cobbled streets, creating an authentic Florentine experience just outside your door. Whether enjoying a morning espresso, browsing local markets, or visiting world-class museums and churches, guests will find everything within easy walking distance. Apartment Galletti offers the perfect starting point for a rich and memorable stay in Florence, combining cultural immersion with everyday convenience.

Local Amenities

Nearest Airport	Amerigo Vespucci Airport (10 km)
Nearest Bar/Pub	180 Grammi Burgers & Beers (50 m)
Nearest Restaurant	Il Pizzaiuolo (130 m)
Nearest Supermarket	Carrefour Express (180 m)
Nearest Train Station	Santa Maria Novella Train Station (2 km)
Sightseeing	Cathedral of Santa Maria del Fiore (1 km)



What we love

- Apartment Galletti, nestled on Via Pietrapiana, puts Florence's historic gems like Piazza Santa Croce at your doorstep!
- Indulge in 120 sqm of recently renovated luxury, featuring three double bedrooms, two terraces, and a fully equipped kitchen, marrying modern comforts with timeless charm
- Immerse yourself in the city's rich tapestry, with iconic landmarks within walking distance and hidden gems waiting to be discovered in the enchanting streets of Florence

What you should know...

- A single sofa bed in the living room offers space for a seventh guest or more flexibility in sleeping arrangements
- The apartment is equipped with air-conditioning to keep you cool during summer
- The area also has several shops and supermarkets, such as the Conad via Pietrapiana and Carrefour via Carducci

Terms & Conditions

- **Security deposit:** Credit card details are required 2 weeks prior to departure for pre-authorisation.
- **Arrival time:** 2 pm. Late check-in available at an extra cost of €20 for arrivals after 8 pm, €35 between 11 pm – 1 am. No check-in allowed after 1 am until 11 am the next morning.
- **Departure time:** 10 am
- **Energy costs included?:** Yes, included in the rental price.
- **Linen & towels included?:** Yes, included in the rental price.
- **Pets welcome?:** Not allowed.
- **Changeover day:** Flexible.
- **End of stay cleaning available?:** Not included in the rental price, extra €100 to be paid with the balance due.
- **Smoking Allowed?:** Smoking & Vaping are not permitted.
- **Minimum stay:** 2 nights. All other durations on request.
- **Heating costs included?:** Yes, included in the rental price.
- **Tax:** Florence City Tax is €6 per person (age 12 and over), per night, up to 7 nights. City tax is not included in the rental rate and is payable locally.
- **Internet access?:** Wi-Fi internet access included.