

# Apartment Pastefolle

Region: Florence    Sleeps: 6

---

## Overview

Apartment Pastefolle offers a refined escape in the heart of Florence, perfectly positioned on Via Roma just steps from the Duomo and Piazza della Repubblica. Set within an elegant building, this spacious apartment blends timeless elegance with modern comfort, providing an exceptional base for travellers eager to experience the charm of Florence's historic centre.

Inside, you'll find three beautifully decorated bedrooms, one with its own kitchen, and three marble bathrooms with walk-in showers. The apartment is cleverly arranged to allow flexible use, with the potential to divide it into a four-room flat and a separate studio. High ceilings with classic stucco details, polished parquet floors, and designer furnishings lend the space an atmosphere of graceful sophistication. The fully equipped kitchen, large living room, and essential amenities such as air conditioning, Wi-Fi, and a dishwasher ensure every convenience.

Apartment Pastefolle is an elegant retreat for up to eight guests seeking an unforgettable stay in Florence.

## Facilities

Air-Con • Washing Machine • TV • City Homes & Apartments • Coffee Machine • Hairdryer • Wi-Fi/Internet • Historical Sites • Laptop Friendly Workspace • Lift • Easy By Train • Ideal for Kids • Ideal for Teens • Walk to Restaurant • <1hr to Airport • Dishwasher • Heating • Outdoor Pursuit & Activities • Tourist Towns & Villages



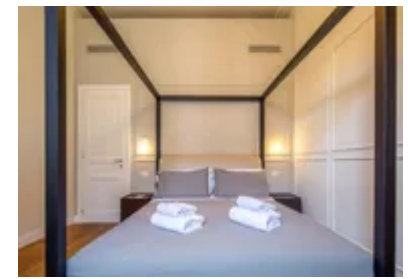
# Interior & Grounds

## Interior

- Spacious living room
- Well-equipped kitchen and dining room
- Dining area
- Studio bedroom: Double bed, ensuite and kitchenette
- Bedroom 2: Double bed with ensuite
- Bedroom 3: Double bed
- Bathroom

## **Additional Facilities**

- Elevator
- Wi-Fi
- Air-conditioning
- Heating
- Dishwasher



# Location & Local Information

Apartment Pastefolle offers an exceptional holiday base in Florence's historic heart, set along the prestigious Via Roma. Just a short stroll from the iconic Duomo and the vibrant Piazza della Repubblica, this third-floor apartment places guests at the centre of the city's cultural and architectural splendour. Its privileged location allows effortless access to world-renowned landmarks, galleries, and local boutiques, making it ideal for those eager to immerse themselves in Florence's enduring charm.

Surrounded by picturesque streets and the aroma of Tuscan cuisine, the apartment invites leisurely exploration and memorable evenings in one of Italy's most atmospheric cities. Whether discovering the artistry of nearby cathedrals, enjoying riverside walks along the Arno, or indulging in alfresco dining, guests will find every corner of the city within easy reach. Apartment Pastefolle combines convenience and elegance, promising a captivating escape that reflects the timeless beauty of Florence.

## Local Amenities

Nearest Airport	Amerigo Vespucci Airport (9 km)
Nearest Bar/Pub	View on Art Rooftop Cocktail Bar (60 m)
Nearest Restaurant	Ristorante La Grotta Toscana (150 m)
Nearest Supermarket	Carrefour Express (300 m)
Nearest Train Station	Santa Maria Novella (900 m)
Sightseeing	Cathedral of Santa Maria del Fiore (160 m)



## What we love

- Apartment Pastefolle sits steps away from Piazza del Duomo and Piazza della Repubblica, making it an ideal hub for exploring Florence's historic gems
- The apartment offers the versatility of being divided into two units, catering to various preferences for a tailor-made stay
- From intricate stucco to marble bathrooms, every detail exudes luxury, providing a lavish retreat in the heart of Florence

## What you should know...

- Apartment Pastefolle can be divided into two smaller units (a studio apartment and a four-room apartment)
- The apartment has air conditioning, Wi-Fi internet, dishwasher and much more
- The apartment is located on the third floor of the building; there is a convenient lift for guests to use

# Terms & Conditions

- **Security deposit:** €500 charged to client's credit card as a pre-authorisation two weeks before arrival and refunded two weeks after departure, subject to full inspection.
- **Arrival time:** 2 pm. Late check-in available at an extra cost of €20 for arrivals after 8 pm, €35 between 11 pm – 1 am. No check-in allowed after 1 am until 11 am the next morning.
- **Departure time:** 10 am
- **Energy costs included?:** Yes, included in the rental price.
- **Linen & towels included?:** Yes, included in the rental price.
- **Pets welcome?:** Not allowed.
- **Changeover day:** Flexible.
- **End of stay cleaning available?:** Not included in the rental price, extra €100 to be paid with the balance due.
- **Smoking Allowed?:** Smoking & Vaping are not permitted.
- **Minimum stay:** 2 nights. All other durations on request.
- **Heating costs included?:** Yes, included in the rental price.
- **Tax:** Florence City Tax is €6 per person (age 12 and over), per night, up to 7 nights. City tax is not included in the rental rate and is payable locally.
- **Internet access?:** Wi-Fi internet access included.