

# Chalet Summit

Region: 3 Valleys Sleeps: 8

## Overview

Cradled by snow-dusted pines in Courchevel's exclusive Cospillot district, Chalet Summit pairs the intimacy of a traditional mountain retreat with the quiet sophistication of modern alpine living. Clad in pale timber and framed by panoramic windows, the chalet glows with natural light and invites you into a world of understated elegance and comfort. Step inside and you're immediately met with a striking fireplace of stone and wood, anchoring an open-plan space that balances rustic charm with contemporary design.

The heart of the home unfolds around this central fire, where cosy armchairs and stylish décor create a welcoming living room, flowing into a refined dining area and well-appointed kitchen. Step out onto the broad terrace and breathe in the crisp mountain air as the jagged peak of Dent du Villard rises before you.

Downstairs, three en-suite bedrooms provide serene spaces to retreat, each with direct access outdoors. Tucked into the top floor, a fourth bedroom offers both privacy and mountain views. After a day on the slopes, indulge in the chalet's wellness zone with a steamy hammam or sink into the outdoor jacuzzi as the sun sets behind the alpine ridgeline. Here, every detail feels crafted for calm, comfort and connection.

## Facilities

Self-Catered • Ski Lift Nearby • Ski School Nearby • Boot Heaters • Ski Room • Mountain View • Walk To Slopes • Wellness • Ski Chalet • Ideal for Xmas/NY • Skiing • Walk to Village • Ideal for Kids • Private Pool • Heated Pool • Ideal for Teens • Cots (Cribs) • Indoor Pool • Instagrammable • Walk to Restaurant • Parking Space • Wi-Fi/Internet • Lakes and Mountains • Washing Machine • Coffee Machine • Outstanding Landscapes • Outdoor Pursuit & Activities • Lift • Garage • Hot Tub • Tumble Dryer • Dishwasher • Microwave • Smart TV • Sauna/Steam • Home Cinema • Working Fireplace/Woodburner • Bathroom Toiletries • Ideal for Babies & Toddlers • High Chair(s)



# Interior & Grounds

## The Villa

### Ground Floor

- Open plan living space
- Elegant dining area
- Fully equipped kitchen

### First Floor

- Bedroom 1: Double (or Twin) room
- Bathroom

### Lower Ground Floor

- Bedroom 2: Double bedroom with ensuite bathroom
- Bedroom 3: Double bedroom with ensuite bathroom
- Bedroom 4: Double bedroom with ensuite bathroom

### Exterior

- Outdoor jacuzzi
- Terrace

### Additional Facilities

- Relaxation area with a hammam
- Wood burning fireplace
- Fondue set and raclette machine
- Baby cot and highchair (subject to extra charge)



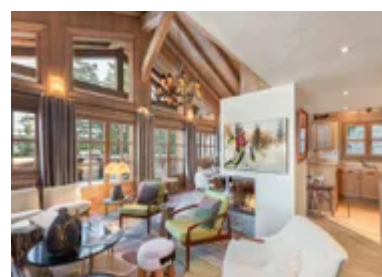
# Location & Local Information

Chalet Summit is nestled in the tranquil Cospillot area of Courchevel 1850, one of the most coveted corners of the French Alps. This peaceful neighbourhood is set slightly apart from the bustle of the main resort, offering guests a more private and scenic escape, while still being within walking distance of the slopes, shops and fine dining. Overlooking the majestic Dent du Villard and surrounded by towering evergreens, it offers both seclusion and breathtaking views.

From the chalet, you can explore the vast Trois Vallées ski area, boasting over 600km of pistes, as well as après-ski spots, gourmet restaurants and high-end boutiques that Courchevel is famed for. The resort is also home to wellness spas, snowshoeing trails, and family-friendly activities, making it a year-round mountain favourite.

## Local Amenities

Nearest Airport	<b>Geneva</b> (145 km)
Nearest Airport	<b>Lyon</b> (187 km)
Nearest Bar/Pub	<b>Le 8611 Bar</b> (250 m)
Nearest Piste	<b>Front de Neige courchevel 1850</b> (300 m)
Nearest Restaurant	<b>Le Sylvestre</b> (220 m)
Nearest Ski Hire	<b>Ski Set Six Senses</b> (450 m)
Nearest Ski Lift	<b>Jardin Alpin</b> (300 m)
Nearest Ski Lift	<b>Verdons</b> (320 m)
Nearest Supermarket	<b>Carrefour Montagne</b> (400 m)
Nearest Village	<b>Courchevel 1850</b> (500 m)



## What we love

- The outdoor jacuzzi is perfectly positioned for soaking under the stars after a day on the slopes!
- The chalet's open-plan living area is flooded with light and anchored by a stunning double-sided fireplace.
- Nestled in a peaceful part of Courchevel 1850, yet close enough to the pistes and village for easy access!
- Wellness features include a hammam and private outdoor terraces from every bedroom.

## What you should know...

- While the upper bedroom offers privacy, it does not have an en-suite and instead uses an elegant separate bathroom.
- The chalet is built on several levels, which may not suit guests with limited mobility.

# Terms & Conditions

- **Security deposit:** Secure link sent to the client's email to fill in the details of the client's bank card online 2 weeks before the arrival for the amount of €10,000. This is in the form of a card authorisation, funds are not cashed
- **Arrival time:** Check-in 5.00 p.m.
- **Departure time:** Check-out 10.00 a.m.
- **Energy costs included?:** Yes, included in the rental price.
- **Linen & towels included?:** Yes, included in the rental price.
- **Pets welcome?:** Not allowed.
- **Other Ts and Cs:** Please note that rental of a cot and highchair is at an extra cost paid directly to the owner: Cot: 40€ per week Highchair: 30€ per week
- **Changeover day:** Saturday.
- **End of stay cleaning available?:** Yes, included in rental price. However, guests are required to leave the accommodation clean, tidy and in the same condition as on their arrival. Any extra cleaning, laundry, maintenance and/or rubbish disposal required will be charged against the security deposit.
- **Smoking Allowed?:** Smoking & Vaping are not permitted.
- **Minimum stay:** 7 nights.
- **Heating costs included?:** Yes, included in the rental price.
- **Pool heating charge?:** Yes, included in the rental price.
- **Tax:** French Visitors Tax payable alongside balance (typically costs €1-€5 per adult per night- please enquire if exact amount is required).
- **Internet access?:** Wi-Fi internet access included.
- **Pool towels included?:** Yes, included in the rental price.