

# Apartment Zoodoria

**Region:** Tuscany   **Sleeps:** 6

---

## Overview

Apartment Zoodoria offers a refined retreat in the heart of Florence, ideally situated in the charming Piazza dè Mozzi within the historic San Niccolò district. Set on the second floor of a distinguished building, this elegant residence combines spacious interiors, stylish furnishings, and thoughtful amenities to create a comfortable and memorable stay. The bright living area invites guests to unwind or entertain, while the well-equipped kitchen provides everything needed for preparing meals inspired by local flavours.

Featuring three beautifully appointed double bedrooms and four bathrooms, Apartment Zoodoria ensures comfort and privacy for families or groups. With air conditioning, Wi-Fi, and modern appliances, convenience is built into every detail. Its location between Santo Spirito and San Niccolò allows guests to explore the city's cultural heart with ease, just a short walk to the Ponte Vecchio, Uffizi Gallery, Palazzo Pitti, and more. Experience the best of Florence's heritage and hospitality in this exceptional Florentine home.

## Facilities

Air-Con • TV • City Homes & Apartments • Coffee Machine • Wi-Fi/Internet • Historical Sites • Hairdryer • Laptop Friendly Workspace • Easy By Train • Ideal for Kids • Ideal for Teens • Walk to Restaurant • <1hr to Airport • Microwave • Heating • Outdoor Pursuit & Activities • Tourist Towns & Villages



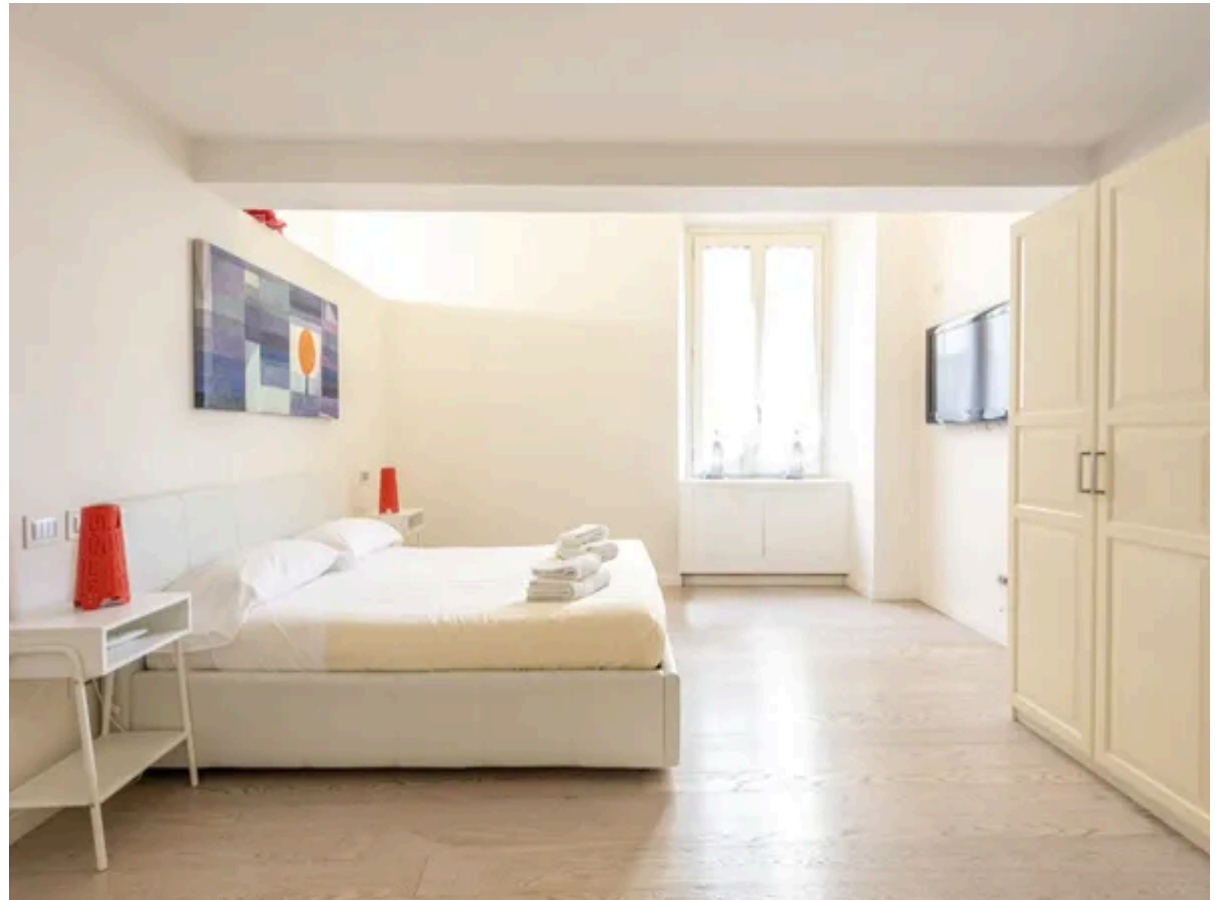
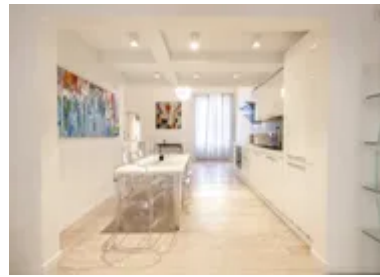
# Interior & Grounds

## Interior

- Large bright living room
- Well equipped kitchen
- Dining area
- Separate toilet
- Bedroom 1: Double bed with ensuite
- Bedroom 2: Double bed
- Bedroom 3: Double bed
- Bathroom
- Separate toilet

## **Additional Facilities**

- Wi-Fi
- Air conditioning
- Heating
- Hair dryer
- Dishwasher



# Location & Local Information

Apartment Zoodoria is a charming holiday escape nestled in the serene Piazza dè Mozzi, in the heart of Florence’s beloved San Niccolò district. Set within a distinguished historic building on the second floor, it offers a tranquil setting just moments from the Arno River. With cobbled streets, artisan studios, and peaceful piazzas, the Oltrarno neighbourhood immerses guests in the most authentic and atmospheric side of Florence.

Perfectly positioned between Santo Spirito and San Niccolò, the apartment provides effortless access to Florence’s most celebrated sights. Guests can walk to the Forte di Belvedere, cross the iconic Ponte Vecchio, or admire masterpieces in the Uffizi Gallery. Palazzo Pitti and the Basilica of Santa Croce are also within reach, placing culture and history at your doorstep. Apartment Zoodoria offers a serene yet central base for exploring Florence, ideal for travellers seeking both convenience and a genuine local experience.

## Local Amenities

Nearest Airport	Amerigo Vespucci Airport (10 km)
Nearest Bar/Pub	Rifrullo Firenze (300 m)
Nearest Restaurant	Pizzeria Ristorante I Tarocchi (100 m)
Nearest Supermarket	CONAD City (400 m)
Nearest Train Station	Santa Maria Novella (2 km)
Sightseeing	House of Galileo Galilei (350 m)



## What we love

- Apartment Zoodoria, set in a prestigious historic building, radiates timeless elegance for an authentic Florentine experience
- A tranquil retreat in the heart of Florence, it's a stroll away from iconic sites, from the Ponte Vecchio to Palazzo Pitti
- This holiday haven seamlessly combines historic allure with modern amenities, ensuring a luxurious and convenient stay in the city's heart

## What you should know...

- There are two full bathrooms and two separate toilets on the property
- The apartment is equipped with air-conditioning, keeping it comfortable at all times of the year
- It is only a few minutes by taxi from the train station to reach the property

# Terms & Conditions

- **Security deposit:** Credit card details are required 2 weeks prior to departure for pre-authorisation.
- **Arrival time:** 2 pm. Late check-in available at an extra cost of €20 for arrivals after 8 pm, €35 between 11 pm – 1 am. No check-in allowed after 1 am until 11 am the next morning.
- **Departure time:** 10 am
- **Energy costs included?:** Yes, included in the rental price.
- **Linen & towels included?:** Yes, included in the rental price.
- **Pets welcome?:** Not allowed.
- **Changeover day:** Flexible.
- **End of stay cleaning available?:** Not included in the rental price, extra €100 to be paid with the balance due.
- **Smoking Allowed?:** Smoking & Vaping are not permitted.
- **Minimum stay:** 2 nights. All other durations on request.
- **Heating costs included?:** Yes, included in the rental price.
- **Tax:** Florence City Tax is €6 per person (age 12 and over), per night, up to 7 nights. City tax is not included in the rental rate and is payable locally.
- **Internet access?:** Wi-Fi internet access included.