

# Apartment Savoiard

Region: Florence Sleeps: 6

## Overview

Apartment Savoiard offers a sophisticated escape in the heart of Florence, just steps from the Ponte Vecchio and Uffizi Gallery. Located on the first floor of a grand building along via Bardi, this refined home invites guests to enjoy the best of Florence with ease and elegance. Recently renovated, the apartment exudes comfort and contemporary charm, featuring three beautifully styled double bedrooms, each with its own TV, and three sleek bathrooms with modern showers. The spacious living area is perfect for both relaxing and socializing, while the fully equipped kitchen allows guests to dine in with style.

High-end amenities include high-speed Wi-Fi, air conditioning, and independent heating, ensuring a comfortable stay year-round. A lift provides easy access, making it suitable for all guests. Within a short walk, you'll reach the Duomo, Boboli Gardens, and the Basilica di Santa Croce, offering a seamless cultural immersion. Apartment Savoiard is a serene yet central base for discovering Florence's timeless beauty.

## Facilities

Air-Con • City Homes & Apartments • Historical Sites • Ideal for Kids • Special Offer • Has Discount • Ideal for Teens • <1hr to Airport • Walk to Restaurant • Wi-Fi/Internet • Easy By Train • Washing Machine • Coffee Machine • Outdoor Pursuit & Activities • Hairdryer • Tourist Towns & Villages • TV • Lift • Laptop Friendly Workspace • Dishwasher • Heating



# Interior & Grounds

## Interior

- Spacious living room
- Dining area
- Well equipped kitchen
- Bedroom 1: Double bed with TV and ensuite
- Bedroom 2: Double bed with TV and ensuite
- Bedroom 3: Double bed with TV and ensuite

## **Additional Facilities**

- Wi-Fi
- Elevator
- Air-conditioning
- Independent heating
- Washing machine



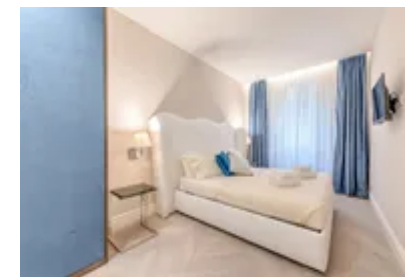
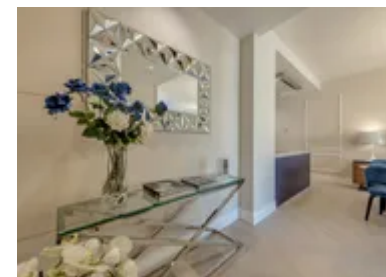
## Location & Local Information

Apartment Savoiardì is a captivating holiday retreat set in the heart of Florence, perfectly positioned on the first floor of an elegant palace along via Bardi. Overlooking the iconic Ponte Vecchio and steps from the Uffizi Gallery, it offers guests a front-row seat to the city's most celebrated sights. The apartment's setting places Florence's artistic and architectural masterpieces just moments away, enveloping visitors in the rich cultural fabric of Tuscany's capital.

From this central base, a five-minute stroll leads to the Duomo, the tranquil Boboli Gardens, and the city's famed museums, while the historic Basilica di Santa Croce lies within a ten-minute walk. Whether wandering through cobble streets or pausing at a nearby café, every corner invites exploration and wonder. With its unmatched location and elegant surroundings, Apartment Savoiardì promises an unforgettable stay that captures the timeless beauty and vibrant spirit of Florence.

## Local Amenities

Nearest Airport	<b>Amerigo Vespucci Airport</b> (12 km)
Nearest Bar/Pub	<b>Picteau Bistrot &amp; Cocktail Bar</b> (180 m)
Nearest Restaurant	<b>Golden View Firenze</b> (10 m)
Nearest Supermarket	<b>Sapori &amp; Dintorni Conad</b> (50 m)
Nearest Train Station	<b>Santa Maria Novella</b> (2 km)
Sightseeing	<b>Piazza della Signoria</b> (400 m)



## What we love

- Apartment Savoiardì offers unparalleled views of the iconic Ponte Vecchio and the Uffizi Gallery, ensuring a daily dose of Florence's timeless beauty right from your window
- Immerse yourself in opulence with a recently renovated interior featuring three double bedrooms, each equipped with a TV and stylishly designed bathrooms
- Explore Florence effortlessly – just a five-minute walk to the Duomo, Boboli Gardens, and Uffizi Gallery!

## What you should know...

- From the Florence Amerigo Vespucci airport, it takes about thirty minutes by car to reach the apartment
- The apartment is equipped with air-conditioning, keeping it comfortable at all times of the year

# Terms & Conditions

- **Security deposit:** €500 charged to client's credit card as a pre-authorisation two weeks before arrival and refunded two weeks after departure, subject to full inspection.
- **Arrival time:** 2 pm. Late check-in available at an extra cost of €20 for arrivals after 8 pm, €35 between 11 pm – 1 am. No check-in allowed after 1 am until 11 am the next morning.
- **Departure time:** 10 am
- **Energy costs included?:** Yes, included in the rental price.
- **Linen & towels included?:** Yes, included in the rental price.
- **Pets welcome?:** Not allowed.
- **Changeover day:** Flexible.
- **End of stay cleaning available?:** Not included in the rental price, extra €100 to be paid with the balance due.
- **Smoking Allowed?:** Smoking & Vaping are not permitted.
- **Minimum stay:** 2 nights. All other durations on request.
- **Heating costs included?:** Yes, included in the rental price.
- **Tax:** Florence City Tax is €5.50 per person (age 12 and over), per night, up to 7 nights. City tax is not included in the rental rate and is payable locally.
- **Internet access?:** Wi-Fi internet access included.