

Elsie Suite

Region: Greece **Sleeps:** 6

Overview

Set high above the whitewashed charm of Astypalaia, Elsie Suite is a stylish two-bedroom villa designed for up to six guests. With sweeping views of the Aegean Sea and the island's iconic castle, this serene retreat invites you to embrace the laid-back rhythms of Greek island life.

Inside, the villa's sunlit interiors combine clean lines with comfort. The ground floor features an open-plan living area with vaulted ceilings, a sleek kitchen equipped with modern appliances, and a relaxed dining space. A corner sofa and elegant finishes create a welcoming atmosphere. Also on this level is the first king-sized bedroom with an ensuite bathroom, alongside two terraces that offer the villa's first glimpses of the mesmerising seascape.

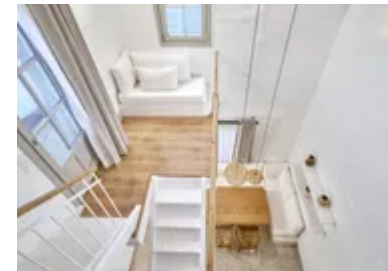
The upper floors reveal further inviting spaces, including a cosy lounge with a Smart TV and sofa bed, a tranquil reading nook, and the master bedroom complete with a sitting area, dedicated workspace, ensuite, and private veranda with striking sea and castle views.

Outdoors, multiple terraces provide ideal spots for al fresco dining, lounging in the sun, or unwinding in the plunge pool and jacuzzi. From leisurely breakfasts to sunset drinks, every moment is framed by the beauty of the Aegean.

Guests are welcomed with a bottle of wine and can request a complimentary brunch of their choice, adding a thoughtful touch to this beautifully curated escape.

Facilities

Villa • Boat Trips • Sailing • Historical Sites • Watersports • Air-Con • Walk to Village • Ideal for Kids • Private Pool • Chef/Cook Available • Ideal for Teens • Pets on Request • Maid Service Available • Beach Nearby • Modern • Walk to Restaurant • Wi-Fi/Internet • Seaview • Outstanding Landscapes • Outdoor Pursuit & Activities • Tourist Towns & Villages • TV • Hot Tub • Heating • Pre-Stocked Fridge Available • Spa Treatments Available • Transfers Available



Interior & Grounds

The Villa

Two bedroom villa sleeping up to 6 guests, with private plunge pool, jacuzzi and sea views

Ground Floor:

- Fully equipped kitchen
- Living and dining room.
- Bedroom with king-sized bed, boudoir, minibar, and ensuite bathroom with walk-in shower.
- 2x terraces with sea and castle views.

First Floor:

- Living room with convertible sofa bed (accommodating 2 adults)
- Family bathroom

Upper Floor:

- Dedicated workspace/relaxation corner
- Bedroom with king-sized bed, boudoir, minibar, and ensuite bathroom with walk-in shower.
- Veranda with sea and castle views.

Exterior:

- Terrace
- Terrace furniture
- Sofa seating/Al fresco setting
- Plunge pool
- Jacuzzi

Additional Facilities

- Wi-Fi
- Microwave
- Dishwasher
- Coffee machine
- Wine bar
- Washing machine/dryer
- Heating
- TV
- AC
- Parking
- Al fresco dining setting
- Veranda
- Baby cot
- Breakfast service in-home



Location & Local Information

The westernmost island of the Dodecanese, Astypalaia, is unmistakably Greek, with its whitewashed villages, azure waters and sun-drenched beaches. Shaped by a narrow isthmus dividing its two main sections, the island is often referred to as "The Butterfly Isle". Elsie Suite is ideally located in the western region, known as Mesa Nisi, within the island's capital, Astypalea.

Astypalaia caters well to visitors, offering a range of amenities including bars, restaurants, cafés, supermarkets, museums, beaches and inviting swimming spots.

One of the most picturesque towns in the Aegean, Astypalea is perched on a promontory that extends into the sea, forming two beautiful bays. Overlooking it all is Astypalea Castle, a Venetian fortress built by John Querini in the early thirteenth century as protection from pirates.

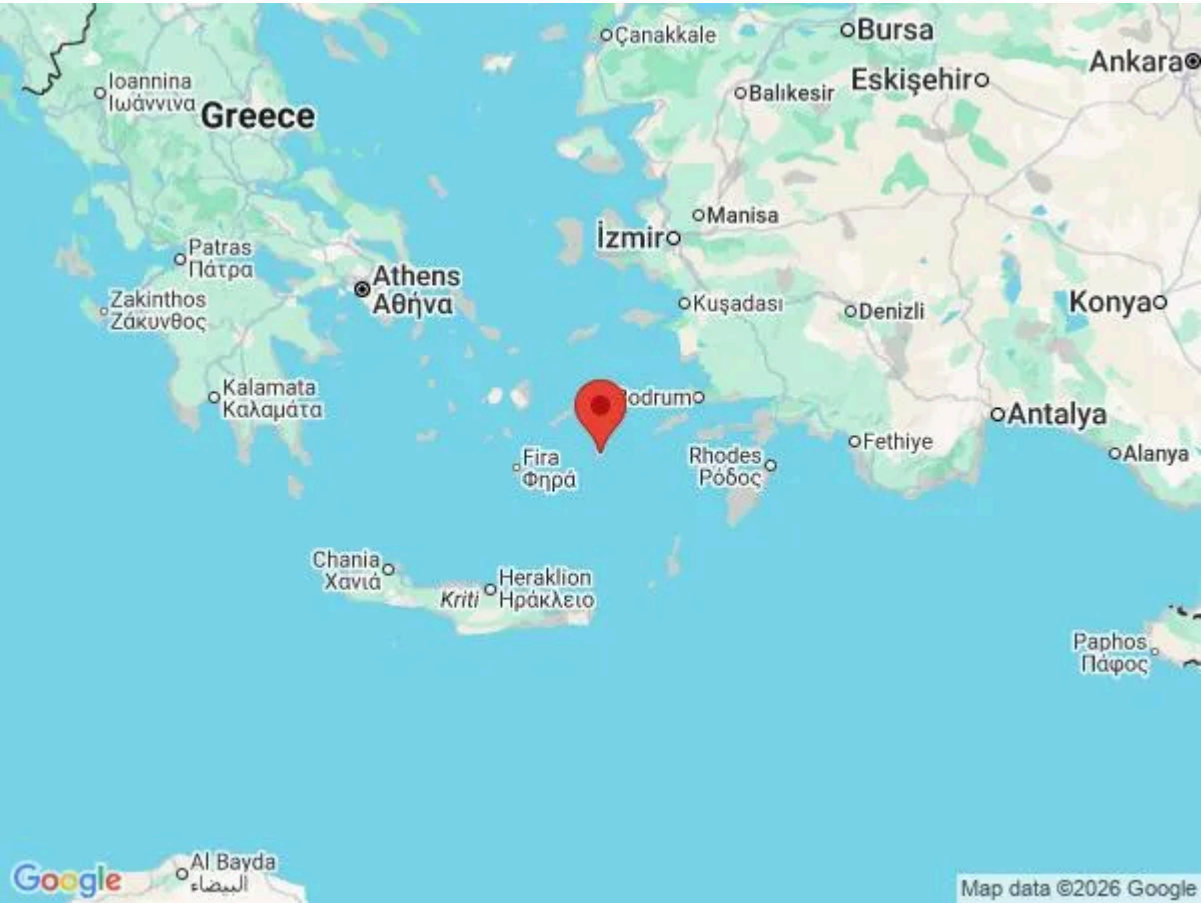
The eight traditional windmills lining the path to the castle are a charming feature. Located on the saddle of the hill, each has a rotating roof as well as turning sails.

The Archaeological Museum of Astypalaia showcases artefacts from various periods, spanning from the Prehistoric era to the Middle Ages.

Another highlight is Drakos Cave, adorned with vibrant stalactites and stalagmites. The cave is steeped in legend, believed to have once hidden pirate treasure.

Local Amenities

Nearest Airport	Athens International Airport (332 km)
Nearest Ferry Port	Astypalea Ferry Port (2.3 km)
Nearest Town/City	Astypalea (1.8 km)
Nearest Beach	Paralia Livadi (1.4 km)
Nearest Restaurant	(450 m)
Sightseeing	Castle of Astypalea (850 m)



What we love

- Sumptuous interiors offer bright and cosy nooks and spaces throughout the villa, ensuring every aspect of your vacation is relaxed and light-filled.
- The villa's terraces are as serene as they are spectacular. Scaling up the exterior of the villa like the interior floors, the terraces boast sun beds, al fresco dining settings, a plunge pool and even a jacuzzi.
- The Butterfly of the Aegean, Astypalaia, is one of Greece's secret gems - a breathtakingly beautiful island that still benefits from being relatively untouristed. Thankfully that doesn't mean there's a lack of amazing dining experiences, activities and attractions.

What you should know...

- The plunge pool is unfenced so be aware of children at play.

Terms & Conditions

- **Security deposit:** There is no security deposit, but should there be any damage or loss caused by you or your guests during your stay you will be liable for the cost
- **Arrival time:** 14.00
- **Departure time:** 10.00
- **Energy costs included?:** Yes, included in rental price
- **Linen & towels included?:** Yes, included in rental price
- **Pets welcome?:** On request only and with prior agreement with the owner.
- **Other Ts and Cs:** Please note that on occasions, in Greece, extremes in weather can cause water and/ or electric supply to be cut or reduced. Services are normally restored as soon as possible.
- **Changeover day:** Flexible
- **End of stay cleaning available?:** Yes. However, guests are required to leave the accommodation clean, tidy and in the same condition as on their arrival.
- **Smoking Allowed?:** Not permitted
- **Minimum stay:** 4 Nights
- **Internet access?:** Complimentary Wi-Fi internet access included in rental price. It is good to note that the speed is dependent on local provider and technical issues may cause reduced speed or cut of service.

The Greek government requires owners to collect a Tourist Climate Tax, your property manager will collect this in cash:

March-October €15 per night per unit

November-February €4 per night per unit