

Villas Kepu Ela

Region: Sri Lanka **Sleeps:** 12

Overview

Tucked away in its own nook of paradise, Villas Kepu Ela is comprised of 6 separate villas accommodating up to 12 guests in jungle seclusion close to the historic city of Galle.

Amidst a calm and soothing atmosphere on 4 acres of land, the villas rise high on stilts to provide views of the gardens, paddy fields, and the lush canopy. Rooms are spread over two suites (raised on stilts) and four further bedrooms.

Two stilted dwellings offer king-sized beds, AC, TVs, en-suite bathrooms with rain showers, and private terraces that boast gorgeous vaulted wooden ceilings, sun loungers, al fresco dining areas and your own private plunge pool. Four more 60sqm treetop villas boast queen-sized beds, en-suite bathrooms, AC, TVs, dedicated workstations, and private terraces with al fresco dining settings.

The property's dining area can be found by the pool and on a raised wooden deck that overlooks a lily pond and features a backdrop of paddy fields and mangrove forests. But guests can also opt to dine on the pool deck under the stars, or on their own private terrace. The chefs here serve home-grown, freshly prepared meals cultivated from the paddy fields and gardens that surround the property. Don't miss out on the crispy pol rotti and freshly ground chilli sambol with a cold juice. And after you've finished, take a stroll on the raised walkway that threads through the jungle.

Surrounded by lush greenery, this outdoor oasis offers a refreshing respite from the warm Sri Lankan sun. Lounge on comfortable sunbeds or sip a cool drink before taking a dip in the pool immersed in a backdrop of paddy fields.



Facilities

Waterfront • Surfing • Washing Machine • Villa • Coffee Machine • Hairdryer • Boat Trips • Historical Sites • Watersports • Ground Floor Bed & Bath • Wi-Fi/Internet • Air-Con • Beach Nearby • Chef/Cook Included • Private Pool • Maid Service Included • DVD • Breakfast Included • Butler Included • Ideal for Teens • Tumble Dryer • Safety Deposit Box • All Bedrooms En-Suite • Satellite TV • Parking Space • Outstanding Landscapes • Outdoor Pursuit & Activities • Tourist Towns & Villages

Interior & Grounds

Villa Interiors (6 villas)

- 2 x stilted dwellings with king-sized beds, en-suite bathrooms with rain showers, terraces with al fresco dining settings, plunge pools
- 4 x treetop suites with queen-sized beds, en-suite bathrooms with showers, dedicated workstations, private terraces with al fresco dining settings

Outside Grounds

- Swimming pool
- Terrace with outdoor furniture
- Sun loungers
- Al-fresco dining area
- BBQ
- Private parking

Facilities

- Wi-Fi
- Air-conditioning
- TVs
- Washing machine and dryer
- Iron and ironing board



Location & Local Information

Galle Fort is a UNESCO World Heritage Site and one of the most charming, historical and spectacular sights in southern Sri Lanka. With its bustling laneways, crumbling colonial facades, and vivid modern charm, Galle Fort is a city that has been at the centre of the global spice trade for centuries – making it a melting pot of culture and colour.

These days Galle Fort is also home to chic boutiques and cafes where the whitewashed Dutch colonial buildings make you feel like you’ve travelled back to the 18th century. And yet the history of the city

dates back much longer than that. In fact, the port was recorded as part of the ancient maritime Silk Road on Ptolemy’s world map of 125-150 AD.

Make sure not to miss the famous Lighthouse (which is still in use) and boasts a surrounding circle of palm trees that make it one of the most photogenic lighthouses in the world. From there you can walk the walls of the Fort, starting at the historic Clock Tower and taking in the city’s many historical sites.

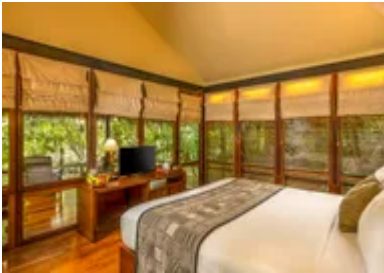
Sinharaja Forest Reserve, another UNESCO World Heritage Site (75km), is Sri Lanka’s last viable area of primary tropical rainforest where more than 60% of the trees are endemic and many of them rare. Get ready to see purple-faced leaf monkeys, Toque macaques, flame striped jungle squirrels and much more.

Trekking at Rumassala (8km) is also a true treat. According to the ancient Indian Poem, Ramayanaya, the Rummasala mountain is a piece of the Himalayan Mountain that the monkey god Hanuman threw away after a doctor extracted medicinal plants from it to treat his critically ill brother. Hiking through the Rumassala Forest results in breathtaking views of the ocean from the summit.

Udawalawa National Park (130km) is also worth a visit - it boasts protected forest and grasslands and is the perfect place to see wild elephants. Take a tour by jeep (half day or full day) which also provides breakfast.

Local Amenities

Nearest Airport	Colombo International Airport (114km)
Nearest Beach	(>1km)
Nearest City	Galle (4km)
Nearest Restaurant	(on-site)
Nearest Supermarket	Galle (4km)



What we love

- Unique jungle setting ensures guests will feel a true sense of adventure and jungle immersion
- The uniquely shaped swimming pool here offers much-needed respite from the Sri Lankan sun
- Proximity to historic sights such as Galle Fort and natural wonders such as Rumassala and Udawalawa National Park

What you should know...

- While daily breakfast is included in the price, the cost of lunch & dinner service is charged separately based on your menu choices. This is to be paid upon departure (cash or card accepted).
- There is a set menu for lunch & dinner, though the chef is happy to take requests with prior notice.
- Please note that the accommodation is spread over 6 separate villas made up of 4 treetop suites and 2 stilted dwellings. They are quite spaced apart with walkways between them.
- Villas Kepu Ela is not suitable for young children due to the pond.

Terms & Conditions

- **Security deposit:** No security deposit is required for this villa. However, please be aware that guests are still required to leave the accommodation clean, tidy and in the same condition as on their arrival and any damages will be charged upon departure.
- **Arrival time:** 2.00 p.m.
- **Departure time:** 12.00 p.m.
- **Energy costs included?:** Yes.
- **Linen & towels included?:** Yes.
- **Pets welcome?:** Not allowed.
- **Other Ts and Cs:** Weddings, stag/hen parties and any special events are on request only and subject to prior arrangement with the owner and additional charges. While daily breakfast is included in the price, the cost of lunch & dinner service is charged separately based on your menu choices. This is to be paid upon departure (cash or card accepted). Please note that Villas Kepu Ela is not suitable for younger children. Teenagers are allowed.
- **Changeover day:** Flexible.
- **End of stay cleaning available?:** Yes. However, guests are required to leave the accommodation clean, tidy and in the same condition as on their arrival. Any extra cleaning, laundry, maintenance and/or rubbish disposal required will be charged against the security deposit.
- **Smoking Allowed?:** Not allowed.
- **Minimum stay:** 2 nights.
- **Heating costs included?:** Yes.
- **Tax:** Visitor's Tax is included.
- **Pool towels included?:** Yes.
- **Pool opening dates?:** Please note that pool opening dates are subject to local weather conditions and pool maintenance requirements and that cooler months may not be suitable for swimming.