

# Wycliffe Residence

**Region:** The South East   **Sleeps:** 4

---

## Overview

Nestled snugly in the heart of Oxford City Centre, Wycliffe Residence stands as a beacon of luxury and historic charm, boasting a coveted Visit England 5 Star Gold rating. As you step through its doors, a world of discreet luxury and unparalleled privacy unfolds before you, wrapped in the embrace of hotel-style concierge services, perfect for the discerning traveller seeking an extraordinary experience.

The layout of Wycliffe Residence is a seamless fusion of historic elegance and modern convenience. Ascend the listed 17th Century wood-panelled staircase to discover two 'whole floor' suites, each a sanctuary of style and character. Hand-made super-king size beds, adorned with Vi-Spring Elite mattresses, promise nights of restorative slumber. Soft seating areas in both bedrooms and dressing rooms invite relaxation, while ensuite bathrooms, featuring roll-top baths and rain-drop showers, offer indulgent retreats.

On the ground floor, a fully equipped luxury kitchen awaits, resplendent in hand-made tulipwood craftsmanship. From the bean-to-cup coffee machine to the double ovens and Quooker boiling tap, every detail is meticulously curated for culinary excellence. Adjacent lies the period wood-panelled sitting room, furnished with Harris Tweed sofas and Yew wood dining tables, providing an elegant backdrop for intimate gatherings or private dining experiences.

French doors beckon you into The Courtyard Garden, a tranquil oasis enveloped in greenery and the soft murmur of a fountain. Beneath the arbour, guests can bask in the serenity of this verdant retreat, mere moments away from the city's bustling streets.



For music aficionados, a state-of-the-art SONOS system permeates every corner, ensuring a symphony of sound accompanies your stay. Flat screen TVs in each bedroom offer entertainment at your fingertips, while luxury stone and porcelain bathrooms promise moments of invigoration and relaxation.

As you explore the amenities, from the butlers pantry to the in-ceiling speakers, it becomes clear that Wycliffe Residence is more than just accommodation—it's an escape, a haven, a sanctuary in the heart of Oxford. Whether you're seeking a holiday retreat, celebrating a special occasion, or embarking on a business trip, this hidden gem exceeds expectations, offering a glimpse of paradise amidst the city's storied streets.

## Facilities

Hairdryer • Historical Sites • Horse Riding • Tennis Nearby • Walking/Hiking Paths • Romantic • Cycling • Go-Karting • Boat Trips • Ideal for Xmas/NY • Coffee Machine • Washing Machine • Decorated for Christmas • Stag/Hen Allowed • Wine Tasting • Fishing • Golf Nearby • Wi-Fi/Internet • Not For Little Ones • Laptop Friendly Workspace • Cots (Cribs) • Townhouse/Apartment • Heritage Collection • Ideal for Babies & Toddlers • Pets on Request • Walk to Restaurant • <1hr to Airport • Tumble Dryer • Dishwasher • Microwave • Safety Deposit Box • All Bedrooms En-Suite • Smart TV • Heating • High Chair(s) • Outstanding Landscapes • Outdoor Pursuit & Activities • Tourist Towns & Villages

# Interior & Grounds

## Wycliffe Residence

### Layout

- Lounge space with sofas, armchairs and fireplace
- Dining area with table and chairs
- Fully-equipped kitchen featuring double ovens, induction hob, microwave and Quooker tap
- Pantry with wine storage, washing machine and tumble dryer
- Bedroom with super-king-size bed, TV, dressing room, shower room, seating area and ensuite bathroom with bath
- Bedroom with super-king-size bed, TV, dressing room, shower room, seating area and ensuite bathroom with bath

### Exterior Grounds

- Courtyard garden
- Seating area
- Fountain

### Additional Facilities

- Wi-Fi
- SONOS sound system
- Concierge service (on request)
- CCTV
- High chairs and travel cots for 2 infants on request

*\* Nearby parking can be found just minutes away on foot at Westgate Oxford, please note that this is available on a first come, first served basis. Further information can be found here (<https://westgateoxford.co.uk/your-visit/getting-here>). As parking in the city centre is limited, we recommend using the park & ride services.*





## Location & Local Information

Oxford, often hailed as "The City of Dreaming Spires," holds a storied history that stretches back nearly 800 years, an illustrious past steeped in monarchs and scholars. From its humble beginnings in the 9th century to its current status as a bustling cosmopolitan hub, Oxford has evolved into a vibrant town that seamlessly marries its ancient university with modern amenities, enticing visitors from around the globe.

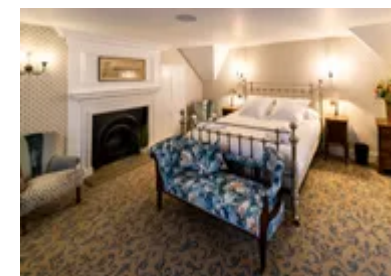
In the heart of this enchanting city lies Wycliffe Residence, a retreat nestled amidst Oxford's myriad attractions and amenities. Here, amidst the cobblestone streets and historic buildings, visitors are spoiled for choice. Whether you're drawn to the hallowed halls of the University, the rich tapestry of museums and galleries, or the allure of riverside walks, central Oxford promises a wealth of experiences just waiting to be discovered.

Embracing Oxford's tradition of cycling, guests can traverse the city's historic streets with ease, perhaps opting for an electric scooter adventure for a modern twist on exploration. With the railway station a mere ten-minute stroll away, excursions to London, Bicester Village Designer Shopping Outlet, or Stratford beckon, offering glimpses into England's diverse landscapes and cultures.

Westgate Oxford, a stone's throw from Wycliffe Residence, stands as a beacon of contemporary sophistication, boasting an impressive array of global brands, eclectic dining options, and a boutique cinema. Its bold architecture and rooftop bars offer panoramic views of Oxford's skyline, creating a dynamic fusion of old-world charm and modern allure.

And let's not forget Oxford Castle, a testament to the city's enduring legacy. From the vantage point of St. George's Tower, visitors can drink in sweeping vistas of the surrounding landscape, while delving into the crypt offers a glimpse into the castle's 900-year-old history.

In Oxford, the past and present converge, creating a



tapestry of culture, innovation, and discovery. Whether you're meandering along the cobbled streets, embarking on a punting adventure, or immersing yourself in the city's vibrant arts scene, Oxford invites you to embrace its rich heritage and vibrant spirit, promising an experience unlike any other.

Local Amenities

Nearest Airport	London Oxford Airport (12.5 km)
Nearest Airport 2	London Heathrow International Airport (77 km)
Nearest Bar/Pub	The Jolly Farmers (0 km)
Nearest City	Oxford (0 km)
Nearest Golf	Oxford Golf Club (6.2km)
Nearest Restaurant	Several (0 km)
Nearest Shop	Several in Westgate Oxford (0 km)
Nearest Supermarket	Sainsbury's, Westgate Oxford (0 km)
Nearest Train Station	Oxford Train Station (1 km)

## What we love

- Wycliffe Residence' whole-floor bedroom suites offer both luxury and privacy
- The properties outdoor spaces are perfect for enjoying a morning coffee while soaking up the atmosphere
- It was wonderful that our family pet could join us during our stay

## What you should know...

- Both bedrooms feature super king-size beds and flatscreen TVs
- The courtyard garden is shared with the adjoining property
- Museums, theatres and shops are just a few minutes walk away from the residence
- Travel cots and high chairs can be provided for up to two infants. However, please note that the property is not baby-proofed, so young children will need constant supervision

# Terms & Conditions

- **Security deposit:** £600 charged to client's credit card as a pre-authorisation at least 2 weeks prior to arrival and refunded two weeks after departure, subject to full inspection.
- **Arrival time:** 4:00 pm
- **Departure time:** 10:00 am
- **Energy costs included?:** Yes, included in the rental price
- **Linen & towels included?:** Yes, included in the rental price
- **Pets welcome?:** A maximum of two well behaved dogs are welcome to stay, on request only. Please enquire at time of booking.
- **Other Ts and Cs:** Please note that bookings must be made at least 3 working days in advance of stay
- **Changeover day:** Flexible. No check-in or check-out on 25th or 26th December.
- **End of stay cleaning available?:** Yes. However, guests are required to leave the accommodation clean, tidy and in the same condition as on their arrival. Any extra cleaning, laundry, maintenance and/or rubbish disposal required will be charged against the security deposit.
- **Smoking Allowed?:** No smoking or vaping allowed
- **Other 2:** Guests are required to sign a Terms & Conditions Agreement prior to arrival. This will be arranged via OT after booking.
- **Minimum stay:** 2 nights throughout the year. 3 nights over the Christmas and New Year period.
- **Heating costs included?:** Yes, included in the rental price
- **Stag & Hen Do Allowed? :** Stag and Hen Do's are allowed on request. Please enquire at time of booking.