

Somerville Residence

Region: The South East **Sleeps:** 8

Overview

Tucked away on the historic Paradise Street, Somerville Residence offers a truly enchanting escape in the heart of Oxford. Just a stone's throw from the university buildings, theatres, and museums, this award-winning self-catering cottage provides the perfect balance of tranquillity and convenience. Whether you're in Oxford for a cultural getaway, a special celebration, or a peaceful retreat, this hidden gem offers space, privacy, and an array of thoughtful services designed to enhance your stay.

Stepping through the black doors into the Courtyard Garden, you are immediately enveloped in a serene oasis. The gentle trickle of the fountain sets a calming tone, while lush greenery surrounds you, offering a secluded retreat from the bustle of the city beyond. Dating back to the early 17th century, Somerville Residence seamlessly blends historic charm with contemporary elegance, ensuring a stay that is as comfortable as it is memorable.

As you move inside, the open-plan reception room welcomes you with warmth and style. A palette of rich, sophisticated colours complements the characterful features of the space. Plush seating invites you to unwind—whether that's curled up with a book, enjoying a quiet conversation, or watching a film on the large-screen TV. French doors lead directly onto the garden, filling the space with natural light and inviting the outside in.

The heart of the home is the beautifully designed kitchen, where culinary enthusiasts will be in their element. A sleek central island takes centre stage, surrounded by top-of-the-range appliances including double ovens, a bean-to-cup coffee machine, and a wine fridge. A dedicated breakfast zone ensures leisurely mornings, while the Butler's Pantry and cloakroom add to the thoughtful layout of the ground floor.

Ascending the central staircase, you'll discover four individually styled bedroom suites, each a haven of comfort and elegance. Super-king hand-made beds with Vi-Spring Elite mattresses promise a restorative night's sleep, while sumptuous en-suite bathrooms, featuring freestanding baths and monsoon showers, provide the perfect sanctuary to unwind. One suite even boasts a Grade II listed ornate plaster ceiling, a stunning reminder of the property's rich heritage. Two suites offer tranquil views of the garden, while the others enjoy the breathtaking sight of Oxford Castle, especially magical when illuminated at night.

Outside, the Courtyard Garden is an idyllic spot to relax or entertain. Beneath the charming arbour, a large dining table is perfectly positioned for al fresco meals, while comfortable seating invites you to linger over a glass of wine as the evening light softens. For those who appreciate impeccable sound, the SONOS multi-room system with MONITOR in-ceiling speakers ensures an immersive musical experience throughout the home.



A hidden retreat brimming with history, charm, and contemporary comforts, Somerville Residence is a place to truly savour Oxford's unique spirit. Whether you're visiting for leisure or business, this exceptional home offers an unforgettable stay, where every detail has been carefully curated to meet the highest expectations.

Facilities

Romantic • Golf Nearby • Fishing • Recommended • Wine Tasting • Stag/Hen Allowed • Walking/Hiking Paths • Horse Riding • Ideal for Xmas/NY • Boat Trips • Cycling • Tennis Nearby • Historical Sites • Not For Little Ones • Special Offer • Has Discount • Has Offer • Pets on Request • Cots (Cribs) • All Bedrooms En-Suite • Townhouse/Apartment • <1hr to Airport • Walk to Restaurant • Heritage Collection • Wi-Fi/Internet • Decorated for Christmas • Washing Machine • Outstanding Landscapes • Coffee Machine • Hairdryer • Outdoor Pursuit & Activities • Tourist Towns & Villages • Laptop Friendly Workspace • Indoor Games • Tumble Dryer • Dishwasher • Microwave • Safety Deposit Box • Smart TV • Heating • Ideal for Babies & Toddlers • High Chair(s)

Interior & Grounds

Somerville Residence

Ground floor

- Reception room/lounge with sofas, armchairs, French doors and garden access, flatscreen TV
- Dining area with table and chairs
- Fully-equipped kitchen with breakfast zone featuring table, chairs and TV, central island, double ovens, Quooker tap, wine fridge, bean-to-cup coffee machine
- Cloakroom
- Butlers pantry

First floor

- Bedroom with super king-size bed, dressing area, seating area, TV and ensuite bathroom with freestanding bath and raindrop/monsoon shower
- Bedroom with super king-size bed, dressing area, seating area, TV and ensuite bathroom with freestanding bath and raindrop/monsoon shower

Second floor

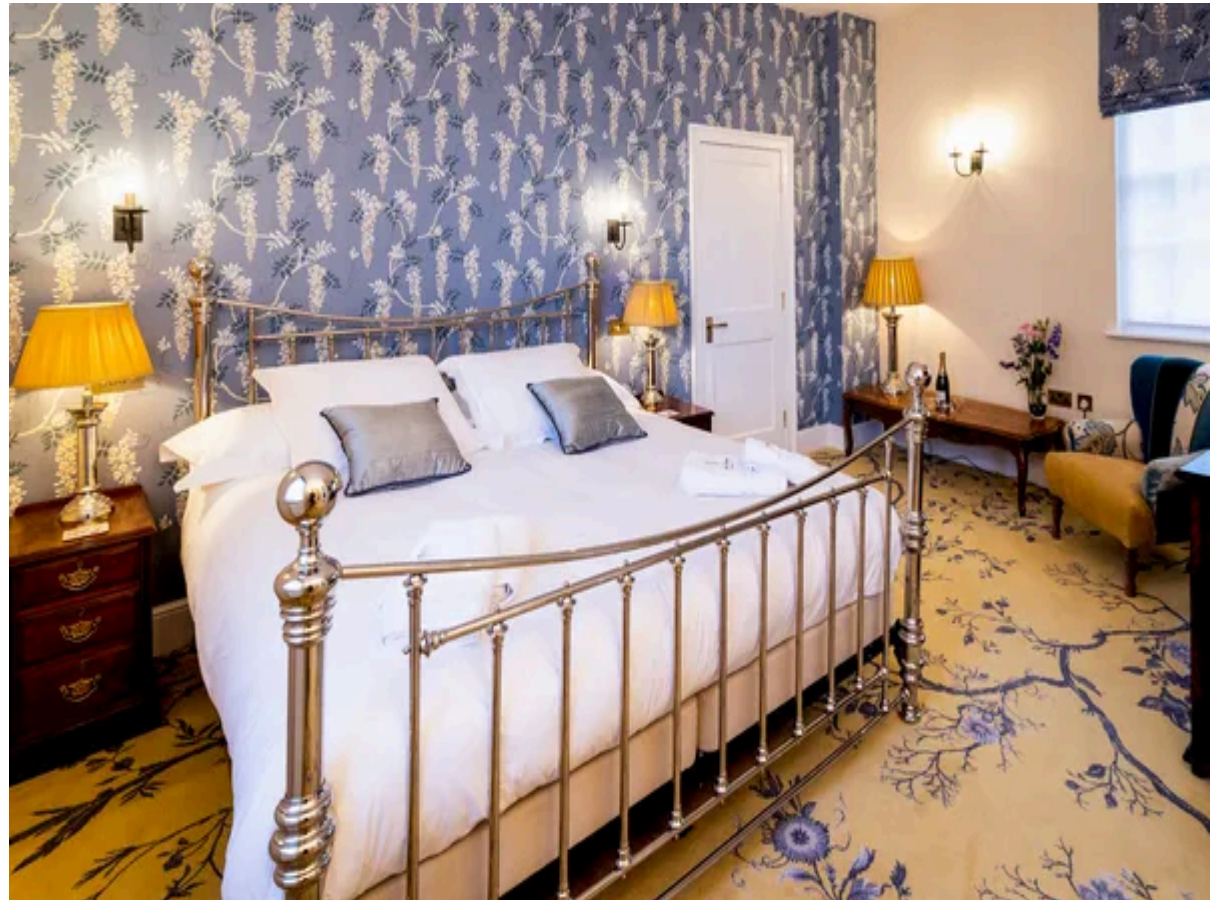
- Bedroom with super king-size bed, dressing area, seating area, TV and ensuite bathroom with freestanding bath and raindrop/monsoon shower
- Bedroom with super king-size bed, dressing area, seating area, TV and ensuite bathroom with freestanding bath and raindrop/monsoon shower

Outdoor spaces

- Courtyard garden
- Seating area
- Fountain

Additional facilities

- Wifi
- SONOS sound system
- Concierge service (on request)
- CCTV
- Travel cots and high chairs for up to 2 infants available on request



Location & Local Information

Oxford, often hailed as "The City of Dreaming Spires," holds a storied history that stretches back nearly 800 years, an illustrious past steeped in monarchs and scholars. From its humble beginnings in the 9th century to its current status as a bustling cosmopolitan hub, Oxford has evolved into a vibrant town that seamlessly marries its ancient university with modern amenities, enticing visitors from around the globe.

In the heart of this enchanting city lies Somerville Residence, a retreat nestled amidst Oxford's myriad attractions and amenities. Here, amidst the cobblestone streets and historic buildings, visitors are spoiled for choice. Whether you're drawn to the hallowed halls of the University, the rich tapestry of museums and galleries, or the allure of riverside walks, central Oxford promises a wealth of experiences just waiting to be discovered.

Embracing Oxford's tradition of cycling, guests can traverse the city's historic streets with ease, perhaps opting for an electric scooter adventure for a modern twist on exploration. With the railway station a mere ten-minute stroll away, excursions to London, Bicester Village Designer Shopping Outlet, or Stratford beckon, offering glimpses into England's diverse landscapes and cultures.

Westgate Oxford, a stone's throw from Somerville Residence, stands as a beacon of contemporary sophistication, boasting an impressive array of global brands, eclectic dining options, and a boutique cinema. Its bold architecture and rooftop bars offer panoramic views of Oxford's skyline, creating a dynamic fusion of old-world charm and modern allure.

And let's not forget Oxford Castle, a testament to the city's enduring legacy. From the vantage point of St. George's Tower, visitors can drink in sweeping vistas of the surrounding landscape, while delving into the crypt offers a glimpse into the castle's 900-year-old history.

In Oxford, the past and present converge, creating a



tapestry of culture, innovation, and discovery. Whether you're meandering along the cobbled streets, embarking on a punting adventure, or immersing yourself in the city's vibrant arts scene, Oxford invites you to embrace its rich heritage and vibrant spirit, promising an experience unlike any other.

Local Amenities

| | |
|-----------------------|--|
| Nearest Airport | London Oxford Airport (12.5 km) |
| Nearest Airport 2 | London Heathrow International Airport (77 km) |
| Nearest Bar/Pub | The Jolly Farmers (0 km) |
| Nearest City | Oxford (0 km) |
| Nearest Golf | Oxford Golf Club (6.1 km) |
| Nearest Restaurant | Several (0 km) |
| Nearest Shop | Several in Westgate Oxford (0 km) |
| Nearest Supermarket | Sainsbury's, Westgate Oxford (0 km) |
| Nearest Train Station | Oxford Train Station (1 km) |

What we love

- We loved the luxurious and spacious interior of Somerville Residence.
- The bedrooms are exquisite - with super king-size beds, stunning ensuite bathrooms, dressing areas and plush seating.
- We loved the beautiful courtyard with seating. It was a wonderful spot to enjoy a morning cuppa.

What you should know...

- The courtyard garden is shared with the adjoining property.
- Museums, theatres and shops are just a few minutes walk away from the residence.
- Somerville Residence is a dog-friendly accommodation, with your furry friend welcome to join you during your stay.
- Please note that whilst travel cots and high chairs are available for up to two infants, the property is not baby-proofed. Infants will require constant supervision.

Terms & Conditions

- **Security deposit:** £600 charged to client's credit card as a pre-authorisation at least 2 weeks prior to arrival and refunded two weeks after departure, subject to full inspection.
- **Arrival time:** 4:00 pm
- **Departure time:** 10:00 am
- **Energy costs included?:** Yes, included in the rental price
- **Linen & towels included?:** Yes, included in the rental price
- **Pets welcome?:** A maximum of two well behaved dogs are welcome to stay, on request only. Please enquire at time of booking.
- **Other Ts and Cs:** Please note that bookings must be made at least 3 working days in advance of stay
- **Changeover day:** Flexible. No check-in or check-out on 25th or 26th December.
- **End of stay cleaning available?:** Yes. However, guests are required to leave the accommodation clean, tidy and in the same condition as on their arrival. Any extra cleaning, laundry, maintenance and/or rubbish disposal required will be charged against the security deposit.
- **Smoking Allowed?:** No smoking or vaping allowed
- **Other 2:** Guests are required to sign a Terms & Conditions Agreement prior to arrival. This will be arranged via OT after booking.
- **Minimum stay:** 2 nights throughout the year. 3 nights over the Christmas and New Year period.
- **Heating costs included?:** Yes, included in the rental price
- **Stag & Hen Do Allowed? :** Stag and Hen Do's are allowed on request. Please enquire at time of booking.