

Somerville Townhouse Estate

Region: The South East **Sleeps:** 12

Overview

Welcome to Somerville Townhouse Estate, a sumptuous fusion of history and luxury nestled in the heart of Oxford City Centre. As you step into this enchanting abode, you'll be greeted by the tranquil courtyard garden, where the gentle murmur of a fountain sets the tone for your stay. This exquisite property comprises two distinct buildings, Wycliffe Residence (<https://www.oliverstravels.com/britain-ireland/oxfordshire/wycliffe-residence/>) and Somerville Residence (<https://www.oliverstravels.com/britain-ireland/oxfordshire/somerville-residence/>), each boasting its own unique charm and outdoor seating area - it's the perfect accommodation choice for larger groups who want to holiday together, while still maintaining privacy when needed. Somerville Townhouse Estate can sleep up to 12 adults, but can accommodate up to 4 additional infants in travel cots.

Step into Somerville Residence, where comfort and relaxation are at the heart of everything. The ground floor greets you with a bright, open-plan reception room, filled with cosy seating and cheerful décor, making it the perfect spot to put your feet up. Sunlight pours through the French doors, opening up to the tranquil garden outside.

The stylish kitchen is ready for all your cooking adventures, with double ovens, a bean-to-cup coffee machine, a wine fridge, and Quooker boiling taps. Whether you're rustling up a hearty breakfast or an evening feast, this kitchen has you covered. Head upstairs to find four beautifully designed bedroom suites, each with its own personality and charm.

Every bedroom features hand-crafted super-king beds with Vi-Spring Elite mattresses, promising a great night's sleep. The ensuite bathrooms are finished with elegant porcelain and natural stone, offering freestanding baths and luxurious monsoon or raindrop showers—ideal for unwinding after a day of exploring Oxford.

Outside, the secluded garden is a peaceful retreat, with a spacious dining area beneath a leafy arbour, perfect for enjoying meals al fresco. The SONOS architectural sound system brings the space to life with rich, immersive sound throughout the residence.

Wycliffe Residence, a historic treasure within the estate, blends period charm with modern comfort. Follow the grand 17th-century wood-panelled staircase to discover two stunning full-floor suites, each a stylish haven with super-king beds, soft seating, and ensuite bathrooms featuring roll-top baths and rain showers.

Downstairs, the fully equipped kitchen is perfect for preparing meals, while the period wood-panelled sitting room provides a cosy and elegant spot to relax, full of historic charm.



With a butler's pantry, a shared courtyard garden, and an in-ceiling sound system, Somerville Townhouse Estate isn't just a place to stay—it's a home away from home. Whether you're planning a family getaway, a special celebration, or a business trip, this hidden gem offers a warm and welcoming escape in the heart of Oxford.

Facilities

Decorated for Christmas • Romantic • Walking/Hiking Paths • Horse Riding • Historical Sites • Tennis Nearby • Cycling • Go-Karting • Boat Trips • Ideal for Xmas/NY • Hairdryer • Stag/Hen Allowed • Wine Tasting • Recommended • Fishing • Golf Nearby • Coffee Machine • Wi-Fi/Internet • Washing Machine • Laptop Friendly Workspace • Not For Little Ones • Indoor Games • Cots (Cribs) • Townhouse/Apartment • Heritage Collection • Kid-friendly museum • Kid-friendly excursions • No car required • Ideal for Babies & Toddlers • Pets on Request • Walk to Restaurant • <1hr to Airport • Tumble Dryer • Dishwasher • Microwave • Safety Deposit Box • All Bedrooms En-Suite • Smart TV • Heating • High Chair(s) • Outstanding Landscapes • Outdoor Pursuit & Activities • Tourist Towns & Villages

Interior & Grounds

Somerville Townhouse Estate

Somerville Residence (Sleeps 8)

Ground floor

- Reception room/lounge with sofas, armchairs, French doors and garden access, flatscreen TV
- Dining area with table and chairs
- Fully-equipped kitchen with breakfast zone featuring table, chairs and TV, central island, double ovens, Quooker tap, wine fridge, bean-to-cup coffee machine
- Cloakroom
- Butlers pantry

First floor

- Bedroom with super king-size bed, dressing area, seating area, TV and ensuite bathroom with freestanding bath and raindrop/monsoon shower
- Bedroom with super king-size bed, dressing area, seating area, TV and ensuite bathroom with freestanding bath and raindrop/monsoon shower

Second Floor

- Bedroom with super king-size bed, dressing area, seating area, TV and ensuite bathroom with freestanding bath and raindrop/monsoon shower
- Bedroom with super king-size bed, dressing area, seating area, TV and ensuite bathroom with freestanding bath and raindrop/monsoon shower

Wycliffe Residence (Sleeps 4)

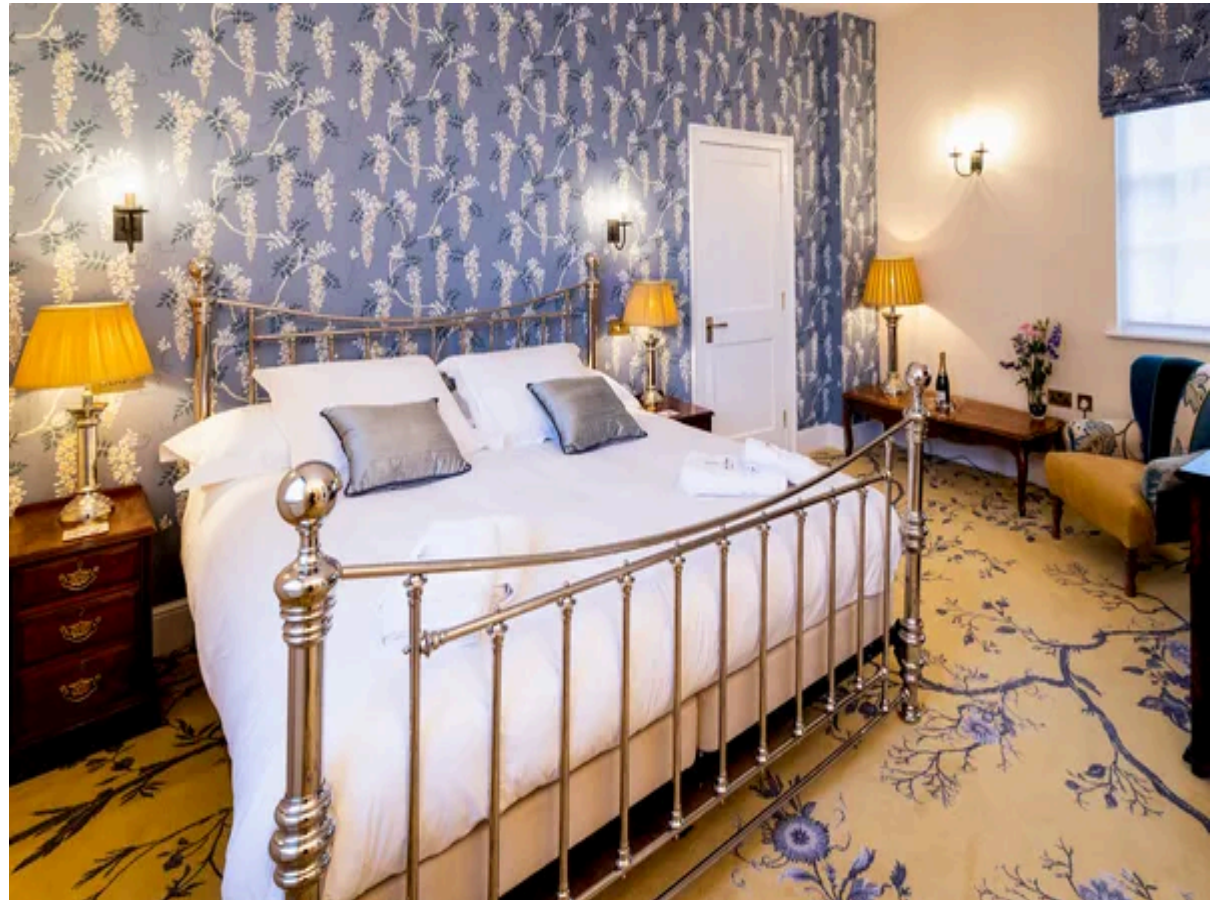
- Lounge space with sofas, armchairs and fireplace
- Dining area with table and chairs
- Fully-equipped kitchen featuring double ovens, induction hob, microwave and Quooker tap
- Pantry with wine storage, washing machine and tumble dryer
- Bedroom with super-king-size bed, TV, dressing room, seating area and ensuite bathroom
- Bedroom with super-king-size bed, TV, dressing room, seating area and ensuite bathroom

Outdoor spaces

- Shared courtyard garden
- Seating area
- Fountain

Additional facilities

- Wifi
- SONOS sound system
- Concierge service (on request)
- CCTV



Location & Local Information

Oxford, often hailed as "The City of Dreaming Spires," holds a storied history that stretches back nearly 800 years, an illustrious past steeped in monarchs and scholars. From its humble beginnings in the 9th century to its current status as a bustling cosmopolitan hub, Oxford has evolved into a vibrant town that seamlessly marries its ancient university with modern amenities, enticing visitors from around the globe.

In the heart of this enchanting city lies the Somerville Townhouse Estate, a retreat nestled amidst Oxford's myriad attractions and amenities. Here, amidst the cobblestone streets and historic buildings, visitors are spoiled for choice. Whether you're drawn to the hallowed halls of the University, the rich tapestry of museums and galleries, or the allure of riverside walks, central Oxford promises a wealth of experiences just waiting to be discovered.

Embracing Oxford's tradition of cycling, guests can traverse the city's historic streets with ease, perhaps opting for an electric scooter adventure for a modern twist on exploration. With the railway station a mere ten-minute stroll away, excursions to London, Bicester Village Designer Shopping Outlet, or Stratford beckon, offering glimpses into England's diverse landscapes and cultures.

Westgate Oxford, a stone's throw from the Somerville Townhouse estate, stands as a beacon of contemporary sophistication, boasting an impressive array of global brands, eclectic dining options, and a boutique cinema. Its bold architecture and rooftop bars offer panoramic views of Oxford's skyline, creating a dynamic fusion of old-world charm and modern allure.

And let's not forget Oxford Castle, a testament to the city's enduring legacy. From the vantage point of St. George's Tower, visitors can drink in sweeping vistas of the surrounding landscape, while delving into the crypt offers a glimpse into the castle's 900-year-old history.



In Oxford, the past and present converge, creating a tapestry of culture, innovation, and discovery. Whether you're meandering along the cobbled streets, embarking on a punting adventure, or immersing yourself in the city's vibrant arts scene, Oxford invites you to embrace its rich heritage and vibrant spirit, promising an experience unlike any other.

Local Amenities

Nearest Airport	London Oxford Airport (12.5 km)
Nearest Airport 2	London Heathrow International Airport (77 km)
Nearest Bar/Pub	The Lolly Farmers (0 km)
Nearest City	Oxford (0 km)
Nearest Golf	Oxford Golf Club (6.1 km)
Nearest Restaurant	Several (0 km)
Nearest Shop	Several in Westgate Oxford (0 km)
Nearest Supermarket	Sainsbury's, Westgate Oxford (0 km)
Nearest Train Station	Oxford Train Station (1 km)

What we love

- We loved the luxurious and spacious interiors of both residences on the Somerville Townhouse Estate.
- The bedrooms are exquisite - with super-king size beds, stunning ensuite bathrooms, dressing areas and plush seating.
- We loved the beautiful shared courtyard with seating. It was a wonderful spot to come together as a group and enjoy a morning cuppa or leisurely breakfast.

What you should know...

- Museums, theatres and shops are just a few minutes walk away from the estate.
- Somerville Townhouse Estate is a dog-friendly accommodation, with your furry friend welcome to join you during your stay.
- Offering two separate buildings within one shared plot, Somerville Townhouse Estate is an ideal accommodation choice for two families holidaying together.
- Whilst the property can accommodate infants, it is not baby-proofed. Children require constant supervision.
- 4 additional infants can be accommodated in travel cots on request.

Terms & Conditions

- **Security deposit:** £1200 charged to client's credit card as a pre-authorisation at least 2 weeks prior to arrival and refunded two weeks after departure, subject to full inspection.
- **Arrival time:** 4:00 pm
- **Departure time:** 10:00 am
- **Energy costs included?:** Yes, included in the rental price
- **Linen & towels included?:** Yes, included in the rental price
- **Pets welcome?:** A maximum of two well behaved dogs are welcome to stay, on request only. Please enquire at time of booking.
- **Other Ts and Cs:** Please note that bookings must be made at least 3 working days in advance of stay
- **Changeover day:** Flexible. No check-in or check-out on 25th or 26th December.
- **End of stay cleaning available?:** Yes. However, guests are required to leave the accommodation clean, tidy and in the same condition as on their arrival. Any extra cleaning, laundry, maintenance and/or rubbish disposal required will be charged against the security deposit.
- **Smoking Allowed?:** Smoking & Vaping are not permitted.
- **Other 2:** Guests are required to sign a Terms & Conditions Agreement prior to arrival. This will be arranged via OT after booking.
- **Minimum stay:** 2 nights throughout the year. 3 nights over the Christmas and New Year period.
- **Heating costs included?:** Yes, included in the rental price
- **Stag & Hen Do Allowed? :** Stag and Hen Do's are allowed on request. Please enquire at time of booking.