

Apartment Pantaleon

Region: Portugal **Sleeps:** 8

Overview

Apartment Pantaleon is a chic three-bedroom getaway set in the lively heart of Porto, just a short walk from the famous Bolhão Market. This modern and welcoming space offers a seamless open-plan layout that combines a sleek kitchen, comfortable living area, and a stylish dining space. Designed for both relaxation and convenience, it includes a dedicated work area with high-speed Wi-Fi, perfect for guests balancing leisure and remote work.

Ideal for groups or families, the apartment sleeps up to eight with two double bedrooms, a twin room, and a double sofa bed. Four contemporary bathrooms with refreshing showers ensure comfort for all. Step onto the large terrace to enjoy al-fresco meals or a peaceful coffee in the morning sun. Additional perks include satellite TV, air conditioning, and access to a coworking space on the first floor. Located near shops, cafés, and transport links, Apartment Pantaleon promises an unforgettable Porto stay.

Facilities

Maid Service Available • Wi-Fi/Internet • Air-Con • Beach Nearby • Special Offer • Has Discount • Easy By Train • Lift • Cots (Cribs) • City Homes & Apartments • Kid-friendly museum • Kid-friendly excursions • Transfers Available • No car required • Breakfast Available • Ideal for Babies & Toddlers • Ideal for Kids • Ideal for Teens • Walk to Restaurant • <1hr to Airport • Washing Machine • Dishwasher • Microwave • Coffee Machine • Hairdryer • All Bedrooms En-Suite • Satellite TV • TV • High Chair(s) • Wine Tasting • Outdoor Pursuit & Activities • Tourist Towns & Villages • Historical Sites



Interior & Grounds

Interior

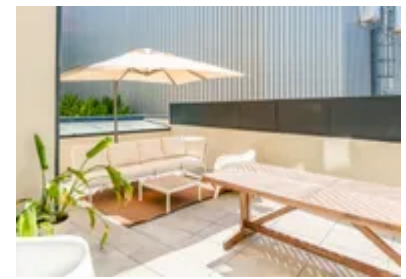
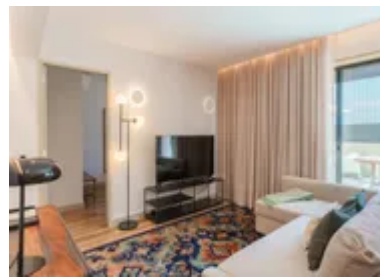
- Living room with double sofa bed
- Fully equipped kitchen
- Dining room
- Bedroom 1: Double bed with ensuite
- Bedroom 2: Double bed with ensuite
- Bedroom 3: Twin beds with ensuite
- Bathroom

Exterior

- Terrace with outdoor dining

Additional Facilities

- Wi-Fi
- Satellite TV
- Air-conditioning
- Heating
- Coffee maker
- Dishwasher



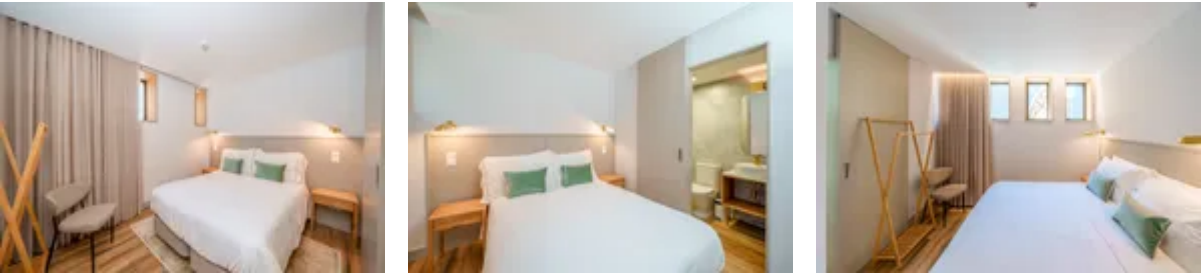
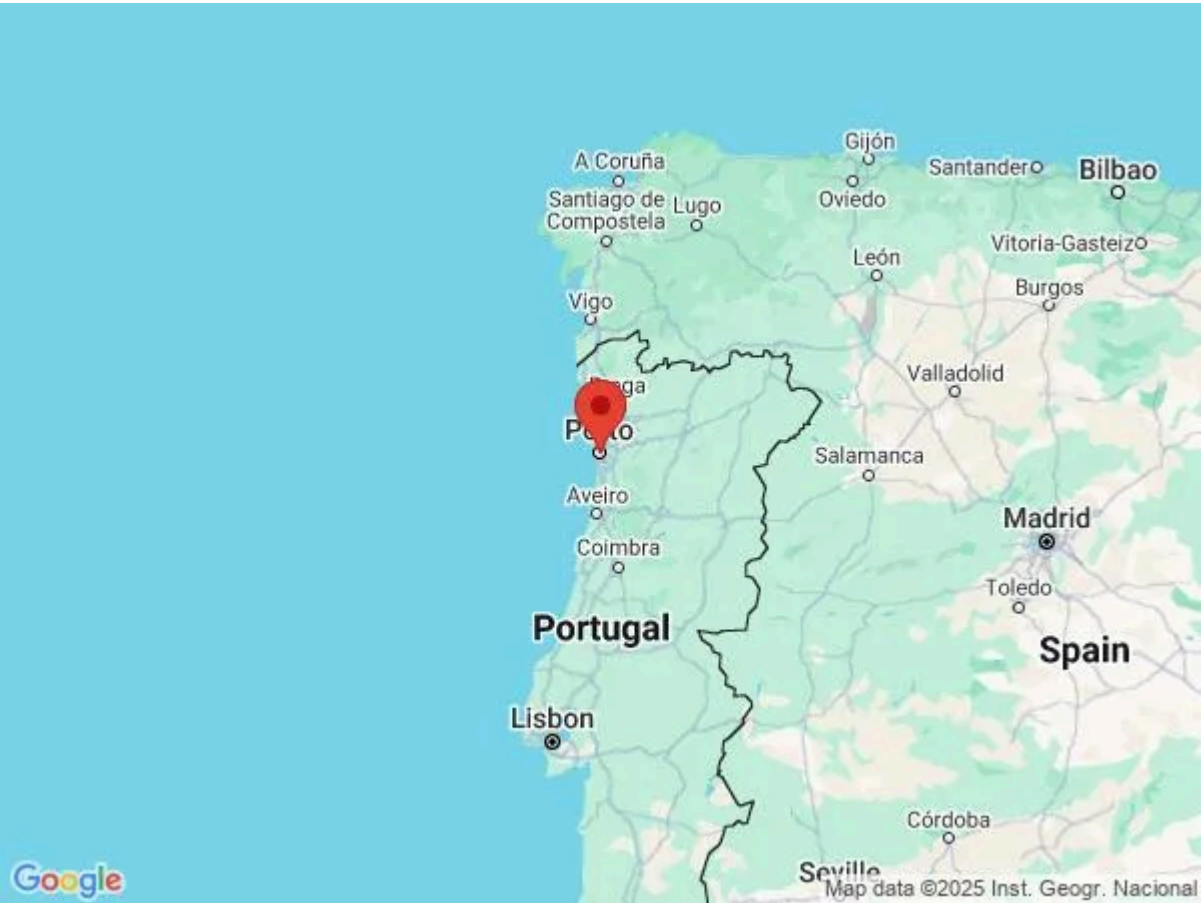
Location & Local Information

Apartment Pantaleon is a perfectly placed retreat in the centre of Porto, offering the ideal base for a memorable holiday. Just a five-minute walk from the lively Bolhão Market, guests are welcomed into the heart of the city's local life. This iconic market, brimming with fresh produce and authentic Portuguese flavours, provides a vibrant glimpse into Porto's culinary heritage and daily rhythm.

With Rua Santa Catarina nearby, guests can enjoy an array of boutiques and shops, perfect for a relaxed afternoon of browsing. Excellent transport links, including a nearby metro station, make it easy to discover Porto's rich tapestry of sights, from historic landmarks to tucked-away treasures. Whether you're indulging in local cuisine, exploring the city's charming alleys, or taking in its cultural highlights, Apartment Pantaleon places you in the centre of it all for a truly authentic Porto experience.

Local Amenities

Nearest Airport	Francisco Sá Carneiro Airport (17 km)
Nearest Bar/Pub	BUDAPESTE Ruin Bar (700 m)
Nearest Beach	Praia do Carneiro (8 km)
Nearest Restaurant	Farinha (50 m)
Nearest Supermarket	Pingo Doce Porto (350 m)
Nearest Train Station	Porto São Bento (900 m)
Sightseeing	Bolhão (350 m)



What we love

- Apartment Pantaleon is just a five-minute walk from Bolhão Market, immersing you in Porto's culinary scene
- Chic, modern decor and a sunlit terrace offer a boutique hotel feel
- Three bedrooms, four bathrooms, and a dedicated work area ensure comfort for up to eight guests

What you should know...

- Please note that we do not have a reception in the building, so you must inform us of your arrival time in advance
- Exercise caution on the outdoor terrace, especially if travelling with young children, as the railing height may require attention

Terms & Conditions

- **Security deposit:** €200 charged to client's credit card before arrival and refunded two weeks after departure, subject to full inspection.
- **Arrival time:** 3 pm. Late check-in possible at an extra cost of €30 per booking, please enquire.
- **Departure time:** 11 am. Late check-out possible at an extra cost of €30 per booking, please enquire.
- **Energy costs included?:** Yes, included in the rental price.
- **Linen & towels included?:** Yes, included in the rental price.
- **Pets welcome?:** Not allowed.
- **Changeover day:** Flexible.
- **End of stay cleaning available?:** Not included in the rental price, extra €77 to be paid with the balance due.
- **Smoking Allowed?:** Smoking & Vaping are not permitted.
- **Minimum stay:** 3 nights. All other durations on request.
- **Heating costs included?:** Not available on this property.
- **Tax:** Porto city tax is €2.00 per person, per night. City tax is not included in the rental rate and is payable locally.
- **Internet access?:** Wi-Fi internet access included.
- **Property Licence Number:** 154052/AL