

Beachside Pimalai III

Region: Koh Lanta Sleeps: 9

Overview

Please note that availability for this property is on request, and pricing may vary depending on specific allocation.

Escape to your own private paradise at Beachside Pimalai III, where you'll experience the ultimate in relaxation and comfort. With a staircase leading directly from your terrace to a pristine 900-meter-long beach, you'll find serenity just steps away from your door. This spacious villa, offering 650 square meters of living space, features a private pool, large living and dining areas, and a fully equipped kitchen—perfect for creating cherished memories with family or friends. Whether you prefer three king beds or a combination of one king and four twin beds, this villa accommodates up to nine guests with ease.

Indulge in a range of thoughtful amenities, including complimentary WiFi, a flat-screen TV with multimedia connection, and a Bluetooth speaker to set the perfect mood. Enjoy bespoke bath amenities, including bath salts, and the convenience of in-room dining, twice-daily housekeeping, and laundry service. Every detail is designed for your comfort, from beach sandals and bags to the fully equipped kitchen, ensuring a perfect holiday experience.

Facilities

Maid Service Included • Special Offer • Has Discount • Tennis Nearby • Watersports • Walk to Village • Cots (Cribs) • Private Pool • Walk to Beach • Beach Nearby • Air-Con • Wi-Fi/Internet • Resort Villa • Cooking Classes Available • Yoga Classes Available • Spa Treatments Available • On-Site Concierge • Transfers Included • Breakfast Included • Ideal for Kids • Ideal for Teens • Walk to Restaurant • Coffee Machine • Safety Deposit Box • Hairdryer • All Bedrooms En-Suite • Ground Floor Bed & Bath • TV • Seaview • Sailing • Canoeing/Kayaking • Walking/Hiking Paths • Cycling • Outstanding Landscapes • Outdoor Pursuit & Activities • Scuba Diving • Boat Trips



Interior & Grounds

Ground Floor

- Main entrance
- Bedroom with two single beds, dressing room, access to a terrace and en-suite bathroom with bathtub and walk-in shower

First Floor

- Ample living room with comfortable seating, TV and access to a terrace
- Open plan dining area for 8 people and access to a terrace
- Well equipped kitchen
- Bedroom with two single beds, dressing room, access to a terrace and en-suite bathroom with bathtub and walk-in shower
- Bedroom with king size bed, dressing room, access to a terrace and en-suite bathroom with bathtub and walk-in shower

Terrace Exteriors

- Private swimming pool
- Ample terrace area
- Various sun loungers
- Gazebo outdoor dining

Additional Facilities

- Complimentary WiFi
- Flat-screen TV
- Multimedia connection
- Bluetooth speaker
- Bespoke Pimalai bath amenities
- Complimentary drinking water
- Organic drip coffee
- Tea-making facilities
- Minibar
- In-room safe
- Individual climate control
- Slippers and bathrobes
- Beach bag
- Beach sandals
- Hairdryer
- Iron and iron board
- Terrace fan
- In - room dining
- Twice daily housekeeping service
- Laundry and valet services



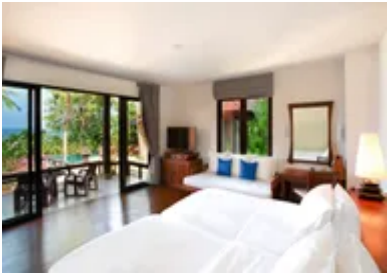
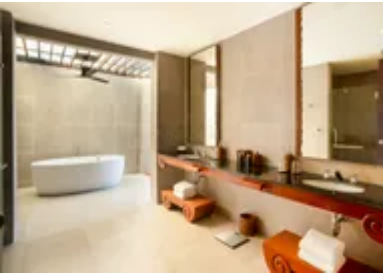
Location & Local Information

Nestled on the pristine shores of Krabi, Thailand, Pimalai Resort & Spa offers a secluded escape where the natural world thrives in untouched beauty. Tucked away within 100 acres of lush tropical forest, the resort is surrounded by the emerald waters of the Andaman Sea and the powdery white sands of Kantiang Bay. This hidden gem on the island of Koh Lanta allows you to reconnect with nature, as the tranquil waves and gentle breezes create a soothing soundtrack to your stay.

The resort's surroundings are a breathtaking blend of dense jungle and expansive sea views, offering a unique opportunity to explore Krabi's rich biodiversity. Wander through mangroves, discover hidden waterfalls, or simply relax on the untouched beaches, where the sunsets paint the sky in vibrant hues. Pimalai Resort & Spa is perfectly positioned to let you experience the true essence of Thailand's natural wonders.

Local Amenities

Nearest Airport	Trang Airport (57 km)
Nearest Airport 2	Krabi (64 km)
Nearest Town/City	Lanta Old Town (16 km)
Nearest Restaurant	Seven Seas (400 m)
Nearest Bar/Pub	Rak Talay Beach Bar (150 m)
Nearest Supermarket	Old Town Lanta Street Market (16 km)
Nearest Beach	Kantiang Beach (200 m)
Nearest Tennis	Tennis Court (150 m)



What we love

- The villa is exquisitely designed with stylish furnishings, elegant decor, plenty of special touches of refinement and exceptional amenities, all tailored to fulfill your every indulgence. It boasts a gorgeous private infinity pool and sublime ocean views that mean you never miss a moment of coastal bliss
- At Pimalai Resort and Spa you will enjoy an endless list of activities and treats, from exhilarating watersports to tennis, basketball, cycling, badminton, table tennis, pickle ball, Muay Thai, beachside yoga, cooking courses, a serene spa, splendid dining choices and thoughtfully designed excursions that promise enchantment
- The resort is brilliantly situated with easy access to captivating wonders. It is the perfect launching point for wonderful island-hopping escapades and fantastic diving opportunities

What you should know...

- The villa sleeps up to nine guests in total. The three bedrooms can be set up as three kings or one king and four singles
- There is only one Beachside Three Bedroom Villa on the resort
- There will be extra costs for meals, drinks, some activities, the spa and excursions
- You can easily combine a stay at this resort with one in Bangkok, Chiang Mai or other Thai locations
- If you have any special desires for a truly memorable stay, please do not hesitate to get in touch
- Please note that availability for this property is on request, and pricing may vary depending on specific allocation

Terms & Conditions

- **Security deposit:** Credit card details are required 2 weeks prior to departure for pre-authorisation.
- **Arrival time:** 2 pm
- **Departure time:** 12 pm
- **Energy costs included?:** Yes, included in rental price.
- **Linen & towels included?:** Yes, included in rental price.
- **Pets welcome?:** Not allowed.
- **Other Ts and Cs:** Please note that availability for this property is on request, and pricing may vary depending on specific allocation.
- **Changeover day:** Flexible.
- **End of stay cleaning available?:** Yes. However, guests are required to leave the accommodation clean, tidy and in the same condition as on their arrival. Any extra cleaning, laundry, maintenance and/or garbage disposal required will be charged against the security deposit.
- **Smoking Allowed?:** Smoking & Vaping are not permitted.
- **Minimum stay:** 3 - 5 nights, depending on season. All other durations on request.
- **Heating costs included?:** Yes, included in rental price.
- **Pool heating charge?:** Not available on this property.
- **Tax:** Government tax and service charge included in the rental price.
- **Internet access?:** Wi-Fi internet access included.
- **Pool towels included?:** Yes, included in rental price.