

Apartment Petal

Region: Serre Chevalier Sleeps: 8

Overview

Welcome to Apartment Petal, your idyllic mountain retreat nestled in the heart of Serre Chevalier. This exquisite 3-bedroom apartment, located in the charming hamlet of Le Casset, seamlessly blends rustic charm with modern sophistication.

As you step inside this stunning apartment, you'll be greeted by high, beamed ceilings accentuating the spaciousness of the open-plan living area, boasting large windows that frame breathtaking panoramic views and allow natural light to flood the space. The minimalist decor accentuates the original wooden structure, creating a harmonious blend of modernity and Alpine tradition and a warm and inviting atmosphere to the stage for a truly memorable stay.

The lounge area beckons with a sumptuous corner sofa, inviting you to unwind in front of the contemporary fireplace or catch up on your favourite shows on the sleek TV. Adjacent to this cosy haven is the ample indoor dining space, featuring a breakfast bar-style table and chairs for up to 8 guests. Apartment Petal's open kitchen is a culinary haven, equipped with high-end integrated appliances, an induction hob, and a Nespresso coffee machine, catering to both casual meals and gourmet feasts. The kitchen seamlessly flows into the dining area and living room, creating a social hub for friends and family.

On the lower level, guests will discover a dormitory adorned with two bunk beds, a double bedroom exuding comfort, and a bathroom with a luxurious bathtub. Another double bedroom with an adjoining bathroom ensures additional privacy, making Apartment Petal an ideal retreat for families and friends.



Apartment Petal promises a holiday and an immersive experience, combining modern style with the tranquillity of its mountain surroundings. Positioned just minutes from Monêtier-les-Bains village and offering unobstructed views of the surrounding mountain ranges, this glorious accommodation, where style meets serenity, is your gateway to relaxation in the heart of the Écrins National Park.

Facilities

Walking/Hiking Paths • Bus/Shuttle To Slopes • Paragliding • Self-Catered
• Skiing • Walk to Village • Ideal for Kids • Cots (Cribs) • Special Offer •
Has Discount • Ideal for Teens • Modern • Walk to Restaurant • Wi-
Fi/Internet • Lakes and Mountains • Chalet Apartment • Washing Machine
• Outstanding Landscapes • Coffee Machine • Outdoor Pursuit & Activities
• Tourist Towns & Villages • TV • Tumble Dryer • Wine Cellar • Working
Fireplace/Woodburner • Heating • Babysitting Available • Bathroom
Toiletries • High Chair(s)

Interior & Grounds

The Apartment

Layout

Interior

First Floor

- Bedroom with two bunk beds (sleeps 4)
- Bedroom with double bed
- Bedroom with double bed and ensuite bathroom
- Bathroom with bathtub

Second Floor

- Lounge space with corner sofa, TV and fireplace
- Dining area with bar-style table and chairs for 8 guests
- Open, fully-equipped kitchen with integrated ovens, induction hob, Nespresso coffee machine, dishwasher, washing machine
- WC

Outdoor spaces

- Balcony

Additional facilities

- WiFi
- Cot and highchair available on request
- TV
- Wood fireplace
- Climatized wine cellar
- Ski locker
- Vaccum
- Nespresso coffee machine
- Induction Hobs
- Dishwasher
- Washing machine



Location & Local Information

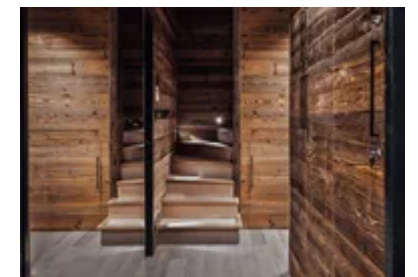
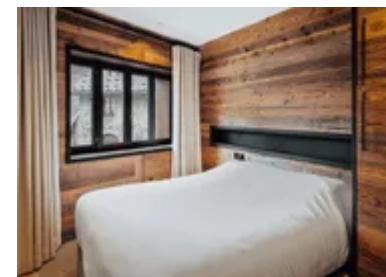
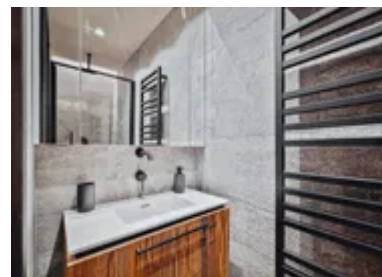
Nestled in the heart of Serre Chevalier, Apartment Petal enjoys a prime location, just 2500 metres away from the vibrant centre of this Alpine paradise. A mere 3000 metres from the ski lift, this apartment is a gateway to the winter wonderland that Serre Chevalier transforms into during the colder months.

For skiing enthusiasts, the closest ski slope, Bacha, is within a convenient 3000 metres, promising thrilling descents and breathtaking alpine views. The proximity to the slopes and ski school, also 3000 metres away, ensures that both beginners and seasoned skiers can make the most of their time on the pristine powder.

Serre Chevalier is renowned for its diverse ski terrain, offering a staggering 87 ski runs in the cooler seasons. Whether you're an adrenaline-seeking expert or a novice on the slopes, the area caters to all levels with 13 black, 29 red, 26 blue, and 13 green runs. The 59 lifts, including the iconic cable car ascending to altitudes over 2,000 metres, promise a seamless and panoramic skiing experience, with a reliable snow cover making winters a picturesque dream.

Beyond the snowy season, Serre Chevalier becomes a playground for outdoor enthusiasts. The bike park, boasting 9 DH tracks and 9 Enduro routes, beckons adrenaline junkies. For those seeking a different perspective, various X-country circuits and hiking trails, easily accessible from the lifts, provide breathtaking scenery. A colossal 1,100-metre zip line adds an extra thrill, while designated picnic areas equipped with planchas invite you to savour grilled delights on sunny days.

Climbing enthusiasts can indulge in the challenge of two via-ferrata routes and, under the guidance of an expert, explore mountaineering on the rugged rock faces. With its multifaceted offerings, Serre Chevalier ensures that Apartment Petal's location becomes not just a stay but an



immersive experience, embracing the natural beauty and adventure that the area generously provides.

Local Amenities

Nearest Airport	Turin (141 km)
Nearest Train Station	Briançon (20.2 km)
Nearest Piste	Bacha (3000 m)
Nearest Ski Lift	Bacha (3000 m)
Nearest Ski Hire	Sport 2000 (2.7 km)
Nearest Restaurant	16âme (2.6 km)
Nearest Bar/Pub	Chez Finette (220 m)
Nearest Supermarket	Proxi Le Relais De La Valee (10.4 km)
Nearest Village	Le Monétier-les-Bains (2500 m)
Nearest Town/City	Grenoble (100 km)

What we love

- We loved the tasteful decor and spacious layout of Apartment Petal
- The dormitory bedroom with two bunk beds was perfect for the kids!
- It was wonderful to be close to the ski lifts and slopes

What you should know...

- A cot and highchair are available on request for the very youngest guests
- The resort centre is located 2500m from the apartment
- One of the double bedrooms features an adjoining bathroom for privacy and convenience

Terms & Conditions

- **Security deposit:** Secure link sent to the client's email to fill in the details of the client's bank card online 2 weeks before the arrival for the amount of €3000. Funds won't be taken or blocked on the credit card in this case.
- **Arrival time:** Check-in 5.00 PM.
- **Departure time:** Check-out 10.00 AM.
- **Energy costs included?:** Yes, included in the rental price.
- **Linen & towels included?:** Yes, included in the rental price.
- **Pets welcome?:** Not allowed.
- **Changeover day:** Saturday.
- **End of stay cleaning:** Standard changeover clean included in the price. Guests are required to leave the accommodation clean, tidy and in the same condition as on their arrival. Any extra cleaning, laundry, maintenance and/or rubbish disposal required will be charged against the security deposit.
- **Smoking Allowed?:** Smoking & Vaping are not permitted.
- **Minimum stay:** 7 nights.
- **Heating costs included?:** Yes, included in the rental price.
- **Tax:** French Visitors Tax payable alongside balance (typically costs €1-€5 per adult per night- please enquire if exact amount is required).
- **Internet access?:** Wi-Fi internet access included.