

# Raya Heritage - Rin Terrace Suite

Region: Chiang Mai   Sleeps: 3

## Overview

Discover the serenity of the Rin Terrace Suites, where modern comfort meets the charm of northern Thailand's cultural heritage. These 75-square-meter suites are bathed in soft shades of white and cream, accented with bold black details that create a peaceful, inviting atmosphere. Crafted with natural materials and a mindful design, each space feels both warm and sophisticated. Your private, covered terrace offers a tranquil escape, with sweeping views of the resort's lush greenery and the calming flow of the River Ping.

Thoughtful artisanal details, from handwoven textiles to intricately carved woodwork, create a deep connection to the local heritage. Each suite has been curated with handmade pottery and traditional baskets, blending simplicity with elegance. Experience the essence of northern Thailand's artistic spirit in these beautifully designed accommodations, where every detail is carefully considered to provide a stay that is both enriching and relaxing.



## Facilities

Resort • Excursions Available • 24hr Reception • Half board Options • Onsite Restaurants • Air-Con • Cycling • Historical Sites • Walking/Hiking Paths • Romantic • Maid Service Included • Special Offer • Has Discount • All Bedrooms En-Suite • Shared Pool • <1hr to Airport • Walk to Restaurant • Wi-Fi/Internet • Rural Location • Outstanding Landscapes • Coffee Machine • Hairdryer • Outdoor Pursuit & Activities • Tourist Towns & Villages • TV • Laptop Friendly Workspace • Safety Deposit Box • Spa Treatments Available • Transfers Available • On-Site Concierge • Breakfast Included • Bathroom Toiletries • Laundry Service

# Interior & Grounds

## Interiors

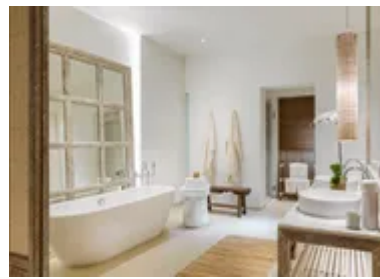
- Bedroom with king size bed and access to a balcony
- Bathroom with bath tub and walk-in shower

## Exteriors

- Ample balcony
- Outdoor dining

## **Additional Facilities**

- Desk
- Safety deposit box
- Upper floors accessible by stairs only
- Flat-screen TV
- Wake-up service
- Sofa
- Outdoor furniture
- Towels
- Seating Area
- Socket near the bed
- Tea/Coffee maker
- Refrigerator
- Minibar
- Tile/marble floor
- Electric kettle
- Sofa bed
- Single-room air conditioning for guest accommodation
- Telephone
- Cable channels
- Wardrobe or closet
- Interconnected room(s) available
- Satellite channels
- Air conditioning
- Hand sanitiser



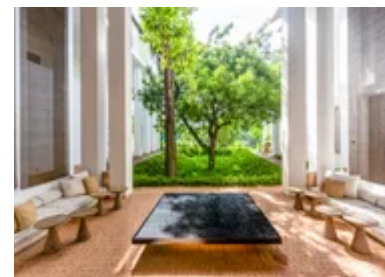
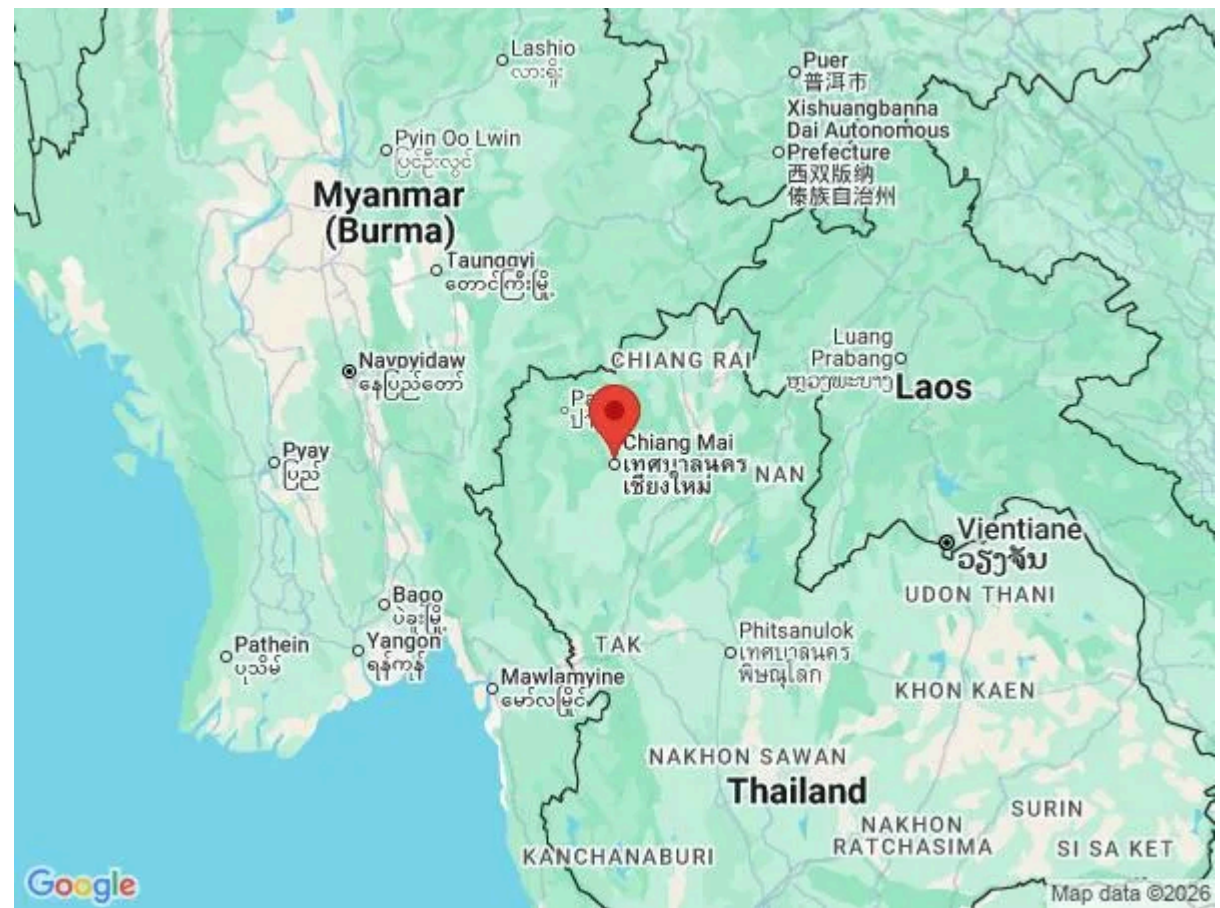
# Location & Local Information

Raya Heritage enjoys a fabulous location, twenty minutes from the heart of Chiang Mai, a captivating city nestled in the mountainous region of Northern Thailand. It beckons tourists with its rich cultural heritage, vibrant markets and stunning natural landscapes. A visit to Chiang Mai promises a harmonious blend of ancient traditions and modern charm.

Raya Heritage’s excursions take you to an organic farming valley with Pakeryaw’s familyNu and his family. As Pakeryaw hill tribes, they have owned the farm for over thirty years. You will stop at the highest peak of Thailand with the Stupa, go downhill to the valley farm by truck, enjoy an organic farm tour and a picnic lunch at the little tree house and visit the ‘Pa Dok Siaw’ waterfall. Another excursion is Sunrise Cycling, experiencing the refreshing atmosphere in the morning with mountain air and a large reservoir and rice fields. You can also learn about local Pong Krai Organic Forest Coffee and wild orchid breeding and take a rickshaw to a local temple and market.

## Local Amenities

Nearest Airport	<b>Chiang Mai International Airport</b> (7 km)
Nearest Train Station	<b>Chiang Mai Railway Station</b> (8 km)
Nearest Village	<b>Sukhito Village</b> (3 km)
Nearest Town/City	<b>Chiang Mai</b> (9 km)
Nearest Restaurant	<b>Khu Khao at Raya Heritage</b> (100 m)
Nearest Bar/Pub	<b>Baan Ta Lounge</b> (100 m)
Nearest Supermarket	<b>Ban Thor Market</b> (2 km)
Sightseeing	<b>Wat Phra That Doi Suthep</b> (20 km)



## What we love

- The Rin Terrace Suites at Raya Heritage were designed by the renowned architect Boonlert Hemvijitraphan, showcasing calm, beautifully appointed sleeping spaces, exquisite bathrooms and stylish outdoor terraces with mesmerising jungle garden and Ping River views.
- The location is excellent, just twenty minutes from Chiang Mai's Old Town. The resort provides easy access to landmarks such as Thapae Gate, Wat Phra Singh and the Three Kings Monument.
- Raya Heritage boasts world-class amenities, including three dining venues, an exquisite spa, a fitness room, a stunning swimming pool and a boutique offering gorgeous local crafts.

## What you should know...

- The resort welcomes children aged six and over.
- Raya Heritage have a fantastic excursion programme which allows you to get a wonderful sense of the local community.
- Be careful as you will be very tempted to buy lots of things to take home from the resort shop!

# Terms & Conditions

- **Security deposit:** Credit card details are required 2 weeks prior to departure for pre-authorisation.
- **Arrival time:** 2 pm
- **Departure time:** 12 pm
- **Energy costs included?:** Yes, included in rental price.
- **Linen & towels included?:** Yes, included in rental price.
- **Pets welcome?:** Not allowed.
- **Other Ts and Cs:** Please note that the resort only accepts child from 6 years old and above to stay in the resort.<br><br> Compulsory Christmas Eve Dinner on December 24 (food only) <br> - THB 5,800 net per person<br> - Children from 6 - 12 (inclusive) receive 50% savings on the full price<br><br> Compulsory New Year's Eve Gala Dinner on December 31 (food only) <br> - THB 11,600 net per person<br> - Children from 6 - 12 (inclusive) receive 50% savings on the full price
- **Changeover day:** Flexible.
- **Smoking Allowed?:** Smoking & Vaping are not permitted.
- **Minimum stay:** 1 - 3 nights, depending on season. All other durations on request.
- **Heating costs included?:** Yes, included in rental price.
- **Tax:** Government tax and service charge included in the rental price.
- **Internet access?:** Wi-Fi internet access included.
- **Pool towels included?:** Yes, included in rental price.