

Raya Heritage - Kraam Pool Suite

Region: Chiang Mai **Sleeps:** 3

Overview

Escape to the serene beauty of our Kraam Pool Suite, a peaceful haven nestled in the resort's lush gardens, just steps from the tranquil Ping River. With 100 square meters of elegantly designed space, these suites blend indoor and outdoor living, featuring a spacious terrace perfect for relaxing and enjoying the surrounding greenery. The highlight is your own private 3x7-meter pool, where you can unwind in privacy as the sounds of nature soothe your senses.

The suite's interior offers a soothing atmosphere with a palette of crisp whites and creams, complemented by hand-woven indigo fabrics that add a touch of artisanal charm. The thoughtfully designed layout provides ample space to rest and rejuvenate, whether lounging indoors or basking in the warmth of the sun outdoors. This is more than just a stay – it's an invitation to immerse yourself in an unforgettable experience of comfort and tranquillity.

Facilities

Romantic • Resort • Excursions Available • 24hr Reception • Half board Options • Onsite Restaurants • Coffee Machine • Hairdryer • Cycling • Historical Sites • Walking/Hiking Paths • TV • Wi-Fi/Internet • Air-Con • Maid Service Included • Private Pool • Special Offer • Has Discount • Laptop Friendly Workspace • Shared Pool • Walk to Village • Spa Treatments Available • On-Site Concierge • Breakfast Included • Bathroom Toiletries • Laundry Service • Walk to Restaurant • <1hr to Airport • Safety Deposit Box • All Bedrooms En-Suite • Outstanding Landscapes • Outdoor Pursuit & Activities • Tourist Towns & Villages



Interior & Grounds

Interiors

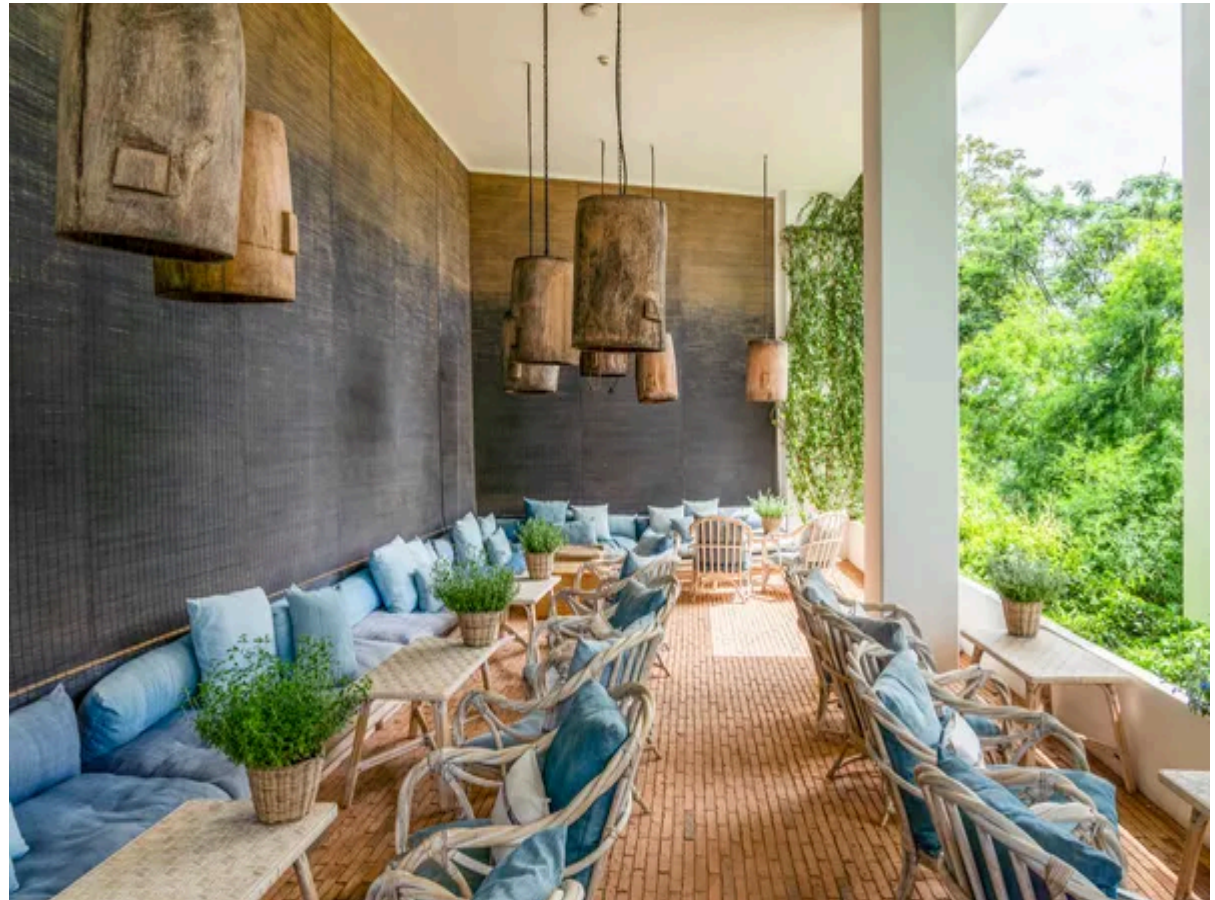
- Bedroom with king size bed and access to a balcony
- Bathroom with bath tub and walk-in shower

Exteriors

- Private plunge pool
- Ample terrace area
- Outdoor dining
- Daybed

Additional Facilities

- Desk
- Safety deposit box
- Upper floors accessible by stairs only
- Flat-screen TV
- Wake-up service
- Sofa
- Outdoor furniture
- Towels
- Seating Area
- Socket near the bed
- Tea/Coffee maker
- Refrigerator
- Minibar
- Tile/marble floor
- Electric kettle
- Sofa bed
- Single-room air conditioning for guest accommodation
- Telephone
- Cable channels
- Wardrobe or closet
- Interconnected room(s) available
- Satellite channels
- Air conditioning
- Hand sanitiser



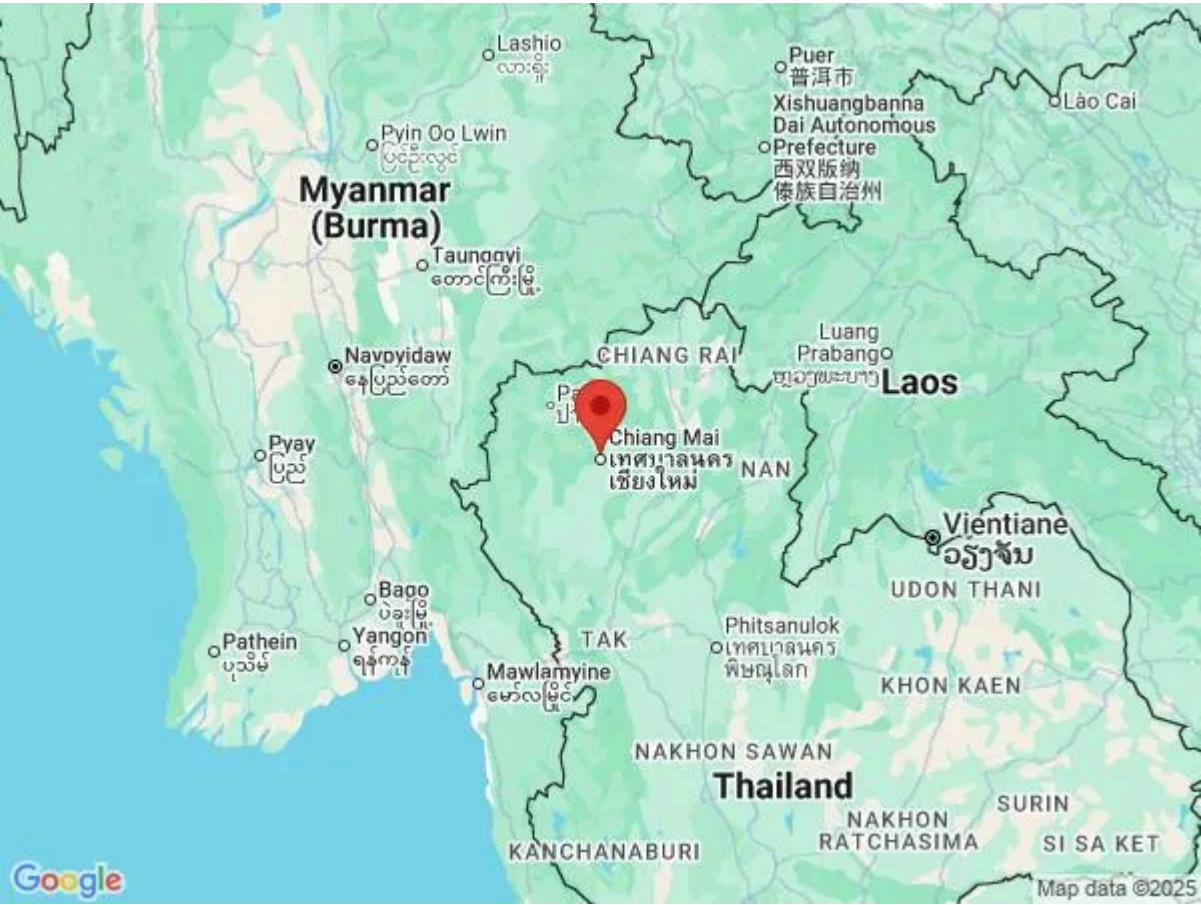
Location & Local Information

Raya Heritage enjoys a fabulous location, twenty minutes from the heart of Chiang Mai, a captivating city nestled in the mountainous region of Northern Thailand. It beckons tourists with its rich cultural heritage, vibrant markets and stunning natural landscapes. A visit to Chiang Mai promises a harmonious blend of ancient traditions and modern charm.

Raya Heritage’s excursions take you to an organic farming valley with Pakeryaw’s familyNu and his family. As Pakeryaw hill tribes, they have owned the farm for over thirty years. You will stop at the highest peak of Thailand with the Stupa, go downhill to the valley farm by truck, enjoy an organic farm tour and a picnic lunch at the little tree house and visit the ‘Pa Dok Siaw’ waterfall. Another excursion is Sunrise Cycling, experiencing the refreshing atmosphere in the morning with mountain air and a large reservoir and rice fields. You can also learn about local Pong Krai Organic Forest Coffee and wild orchid breeding and take a rickshaw to a local temple and market.

Local Amenities

Nearest Airport	Chiang Mai International Airport (7 km)
Nearest Train Station	Chiang Mai Railway Station (8 km)
Nearest Village	Sukhito Village (3 km)
Nearest Town/City	Chiang Mai (9 km)
Nearest Restaurant	Khu Khao at Raya Heritage (100 m)
Nearest Bar/Pub	Baan Ta Lounge (100 m)
Nearest Supermarket	Ban Thor Market (2 km)
Sightseeing	Wat Phra That Doi Suthep (20 km)



What we love

- The Kraam Pool Suites at Raya Heritage, designed by the renowned architect Boonlert Hemvijitraphan, offer exquisite decor, wonderful Thai touches and a superb terrace and private pool. Your holiday dreams will be answered!
- Raya Heritage is cocooned by lush tropical gardens on the banks of the Ping River. Your suite sits in the middle of this paradise, the perfect abode for a spot of switch off!
- The location is excellent, just twenty minutes from Chiang Mai's Old Town. The resort provides easy access to major landmarks such as Thapae Gate, Wat Phra Singh and the Three Kings Monument.
- Raya Heritage boasts world-class amenities, including three dining venues, an exquisite spa, a fitness room, a beautiful swimming pool and a fab boutique offering superb local crafts.

What you should know...

- The resort welcomes children aged six and over.
- Raya Heritage have a fantastic excursion programme which allows you to get a wonderful sense of the local community and the region's beauty.
- The Concierge Team is truly outstanding. You only have to ask and they will do their very best to make sure your dreams come true. There are only thirty eight suites and you will be truly pampered!

Terms & Conditions

- **Security deposit:** Credit card details are required 2 weeks prior to departure for pre-authorisation.

- **Arrival time:** 2 pm

- **Departure time:** 12 pm

- **Energy costs included?:** Yes, included in rental price.

- **Linen & towels included?:** Yes, included in rental price.

- **Pets welcome?:** Not allowed.

- **Other Ts and Cs:** Please note that the resort only accepts child from 6 years old and above to stay in the resort.

 Compulsory Christmas Eve Dinner on December 24 (food only)
 - THB 5,800 net per person
 - Children from 6 - 12 (inclusive) receive 50% savings on the full price

 Compulsory New Year's Eve Gala Dinner on December 31 (food only)
 - THB 11,600 net per person
 - Children from 6 - 12 (inclusive) receive 50% savings on the full price

- **Changeover day:** Flexible.

- **Smoking Allowed?:** Smoking & Vaping are not permitted.

- **Minimum stay:** 1 - 3 nights, depending on season. All other durations on request.

- **Heating costs included?:** Yes, included in rental price.

- **Pool heating charge?:** Not available on this property.

- **Tax:** Government tax and service charge included in the rental price.

- **Internet access?:** Wi-Fi internet access included.

- **Pool towels included?:** Yes, included in rental price.