

Velvet Retreat

Region: The South West **Sleeps:** 4

Overview

Welcome to Velvet Retreat, where every corner whispers comfort and tranquillity. As you step inside, you're greeted by the warmth of a lovingly converted barn, whether you're a party of four or just two seeking ample space (and yes, each of you gets your own bathroom!). The interior is a delightful blend of picturesque garden views, original features, and thoughtful finishes, inviting you to simply be and unwind after a day's adventure.

The heart of Velvet Retreat lies in its first-floor open-plan living area, where cooking, dining, and relaxation seamlessly converge. Bathed in natural light, this airy space boasts a wood-burning stove, a 37" flat panel LCD television, and a well-appointed bespoke kitchen with all the modern conveniences one could wish for – from electric oven and hob to dishwasher and large fridge/freezer. Picture yourself gathered around the oval dining table, sharing stories and laughter on Lloyd loom chairs - pure bliss!

Venture downstairs to discover the en-suite master bedroom, adorned with a king-size half-tester bed, promising restful nights. Its adjoining shower room exudes luxury with travertine floors and a power shower. Meanwhile, the twin bedroom, complete with a built-in wardrobe, offers a cosy retreat for peaceful slumber. A separate main bathroom ensures convenience and comfort for all.

Outside, Cornwall's gentle climate beckons you to the private garden and patio area, perfect for enchanting al fresco dining experiences. Take a leisurely stroll through Boscrowan's serene grounds, where young ones can meet and feed the friendly farm animals, adding a touch of rural charm to your stay.



For your convenience, Velvet Retreat provides ample parking for two cars and a range of inclusive amenities, from oil-fired central heating to environmentally friendly cleaning products. Everything you need for a delightful stay awaits – from Wi-Fi and an iPod docking station, to a small portable barbecue, ensuring every moment is filled with comfort and joy.

Let Velvet Retreat be your holiday sanctuary in Cornwall, where every detail is crafted with care, promising cherished memories and moments of blissful serenity.

Facilities

Decorated for Christmas • Romantic • Walking/Hiking Paths • Historical Sites • Wi-Fi/Internet • Ground Floor Bed & Bath • Tennis Nearby • Cycling • Hairdryer • Coffee Machine • Washing Machine • Surfing • Beach Nearby • Walk to Village • Cots (Cribs) • Rural Location • Food blender • Cottage • Caves/Pre-historic site • Kid-friendly excursions • Water excursions/Boat trips • Playground nearby • Board games • Children's books • Ideal for Babies & Toddlers • Ideal for Kids • Mattress protector • Plastic crockery • Play mat • Ideal for Teens • Tumble Dryer • Dishwasher • Microwave • All Bedrooms En-Suite • Satellite TV • Working Fireplace/Woodburner • Caretaker/Owner on Site • High Chair(s) • Fenced Grounds • Parking Space • Outdoor Pursuit & Activities • Tourist Towns & Villages

Interior & Grounds

Velvet Retreat

Ground floor

- Bedroom with king-size bed and ensuite bathroom with power-shower, basin and toilet
- Bedroom with 2 single beds and built-in wardrobes
- Bathroom with bathtub and shower attachment, basin and toilet

First floor

- Lounge space with sofas, chairs, wood-burning stove, LCD TV and bluetooth speaker system
- Dining area with table and chairs to seat 4 guests
- Fully-equipped kitchen with electric oven and hob, microwave, dishwasher, washing machine and fridge-freezer

Outdoor spaces

- Enclosed garden
- Patio area
- Table and chairs for 4 guests
- Portable barbecue
- Clothes dryer
- Parking for 2 cars

Additional facilities

- Wifi
- Oil-fired central heating
- Towels
- Tea towels
- Cleaning products
- Bread maker
- Slow cooker
- Hairdryer
- Bathrobes
- Iron and ironing board



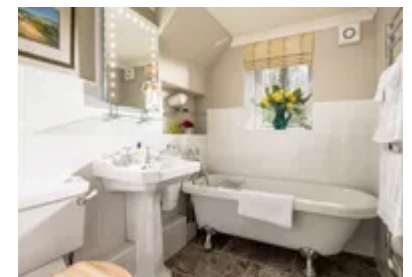
Location & Local Information

Nestled on the outskirts of Heamoor village, just a stone's throw north of Penzance, Boscrowan offers a tranquil retreat while ensuring convenient access to Penzance's bustling amenities. Heamoor, a mere quarter-mile from Boscrowan, boasts practical conveniences for guests, including a well-stocked licensed Costcutter supermarket, a cosy pub, and a tempting fish and chip shop, ensuring you're never far from essentials. You'll find all the details about these local gems inside Velvet Retreat, making exploration a breeze. Plus, the nearest bus stops are conveniently located in Heamoor, providing easy transportation options for further adventures.

Penzance itself, an ancient market town steeped in history and charm, beckons with its fine Georgian and Regency architecture and a delightful array of shops, restaurants, and cafes. From quaint boutiques to delectable eateries, Penzance offers a medley of experiences to suit every taste and preference. And when it comes to stocking up on provisions, the town is well-served with major supermarkets, including Sainsbury's, Morrisons, Tesco, Lidl, and Co-op, ensuring you have everything you need for a comfortable stay.

Set against the picturesque backdrop of St. Mount's Bay, Penzance enjoys a mild climate and stunning vistas, with the historic St. Michael's Mount presiding majestically over the landscape. A highlight of the area is the beautifully restored art deco Jubilee Pool, the UK's largest open-air seawater lido, offering a safe and inviting space to soak up the sun and relax.

Foodies will delight in the diverse culinary scene of Penzance, with options ranging from fine dining at The Bakehouse to world cuisine at Mermaid Alley and comforting classics at 45 Queen St. For a taste of traditional fare, The Dolphin tavern offers home-cooked meals in a charming dockside atmosphere, while Cork and Fork tantalise taste buds with fresh, seasonal local offerings.



Art aficionados will find plenty to admire in Penzance's thriving arts scene, with galleries like Penlee House, Newlyn Art Gallery, and The Exchange Gallery showcasing works by local and international talents. And for beach lovers, the region boasts an abundance of pristine stretches of sand, from the surf haven of Sennen Cove to the unspoiled shores of Porthcurno and Praa Sands.

With its proximity to Truro, Falmouth, and attractions like The Eden Project, Velvet Retreat serves as an ideal base for exploring the treasures of Cornwall. Whether you're immersing yourself in art, sampling local cuisine, or simply soaking up the coastal beauty, Penzance promises an unforgettable experience for every visitor.

Local Amenities

Nearest Airport	Newquay Airport (63 km)
Nearest Ferry Port	Plymouth Ferry Port (129 km)
Nearest Train Station	Penzance Train Station (3 km)
Nearest Village	Heamoor (In walking distance)
Nearest Town/City	Penzance (2 km)
Nearest Restaurant	Alverne, Penzance (2 km)
Nearest Bar/Pub	Sportsmans Arms (In walking distance)
Nearest Shop	Heamoor Newsstand (In walking distance)
Nearest Supermarket	Tesco Express, Penzance (2 km)
Nearest Beach	Penzance Beach (2.5 km)
Nearest Golf	West Cornwall Golf Club, Lelant (13 km)
Nearest Tennis	Penzance Tennis Club (2 km)

What we love

- We loved the spacious yet cosy interior of Velvet Retreat
- The enclosed garden was a beautiful spot for enjoying alfresco meals and enjoying the mild Cornwall climate
- It was wonderful to be able to have access to Boscrowan's grounds and be able to meet the farm animals

What you should know...

- Velvet Retreat doesn't accommodate children under the age of 2 years
- Pets are not permitted
- The cottage is only available to non-smokers

Terms & Conditions

- **Security deposit:** No security deposit required
- **Arrival time:** 3:00 pm
- **Departure time:** 10:00 am
- **Energy costs included?:** Yes, included in the rental price
- **Linen & towels included?:** Yes. Bed linen, towels and beach towels are provided
- **Pets welcome?:** No pets allowed
- **Changeover day:** Saturdays
- **End of stay cleaning available?:** Yes. However, guests are required to leave the accommodation clean, tidy and in the same condition as on their arrival. Any extra cleaning, laundry, maintenance and/or rubbish disposal required will be charged against the security deposit.
- **Smoking Allowed?:** No smoking or vaping
- **Minimum stay:** 7 nights, or 2 nights during low season
- **Heating costs included?:** Yes, included in the rental price