

Casa Limiana

Region: Portugal Sleeps: 8

Overview

Set on a picturesque hillside north of the Lima River, Casa Liliiana is a stunning four-bedroom stone farmhouse that invites you to immerse yourself in the tranquillity and beauty of Portugal's Minho region. As you approach, the sprawling vineyards and olive groves paint a mesmerising backdrop, setting the stage for a memorable countryside escape.

Step inside, and you're greeted by a harmonious blend of rustic charm and modern comfort. The interior exudes warmth, with exposed beamed ceilings and inviting terracotta floors that pay homage to the region's elegant heritage. The heart of the home lies in its open-plan layout, where the kitchen seamlessly transitions into the lounge and dining area. Here, a crackling open fireplace beckons you to unwind on plush sofas while the well-equipped kitchen stands ready to inspire culinary delights. The ground floor also features a convenient shower room and a storage room with a freezer. Upstairs, the master bedroom boasts an ensuite bathroom, while two additional bedrooms offer breathtaking views of the Lima River Valley, and a shared bathroom ensures ample space for all guests.

Beyond the living spaces, a large terrace beckons, offering sweeping vistas of the rolling countryside. It's the perfect spot to savour leisurely meals or bask in the glow of the sun umbrellas. Upstairs, a spacious living area extends onto a shaded balcony, inviting you to linger as you soak in the panoramic views.

A short stroll leads you to the adjacent cottage, where a private swimming pool awaits, nestled amidst manicured lawns and sun-kissed terraces. From its vantage point, the pool area basks in sunlight all day, offering a serene retreat for relaxation and rejuvenation. Nearby, a built-in



barbecue and ample seating set the stage for alfresco dining under the stars.

Inside, the cottage features a cosy double bedroom with an ensuite shower room and a charming terrace overlooking the pool area. With its seamless blend of indoor luxury and outdoor serenity, Casa Liliana promises an unforgettable escape into the heart of Portugal's enchanting countryside.

Facilities

Private Pool • Villa • Wellness • Ideal for Kids • Walking/Hiking Paths • Special Offer • Has Discount • Great Value • Ideal for Teens • Parking Space • Wi-Fi/Internet • Rural Location • Washing Machine • Outstanding Landscapes • Coffee Machine • TV • Laptop Friendly Workspace • Dishwasher • High Chair(s) • Fenced Grounds

Interior & Grounds

The Villa

Ground Floor

- Lounge space with sofas, fireplace and TV
- Dining area with table and chairs
- Fully-equipped kitchen
- Shower room
- Storage room with freezer

First Floor

- Bedroom with double bed and ensuite bathroom
- Bedroom with double bed
- Bedroom with double bed
- Bathroom

Cottage

- Bedroom with double bed and ensuite bathroom with shower

Outside Grounds

- Gardens
- Private pool
- Alfresco dining space with table and chairs
- Barbecue
- Shaded, furnished lounge area
- Parking

Additional Facilities

- Wifi
- Washing machine



Location & Local Information

Perched on a sun-kissed hillside north of the Lima River, this charming villa offers not just a retreat but an invitation to explore the rich tapestry of Portugal's Minho region. Surrounded by rolling vineyards and ancient olive groves, the location paints a captivating picture of rural beauty that's hard to resist.

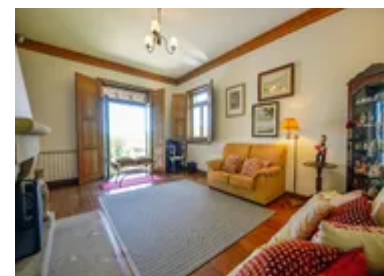
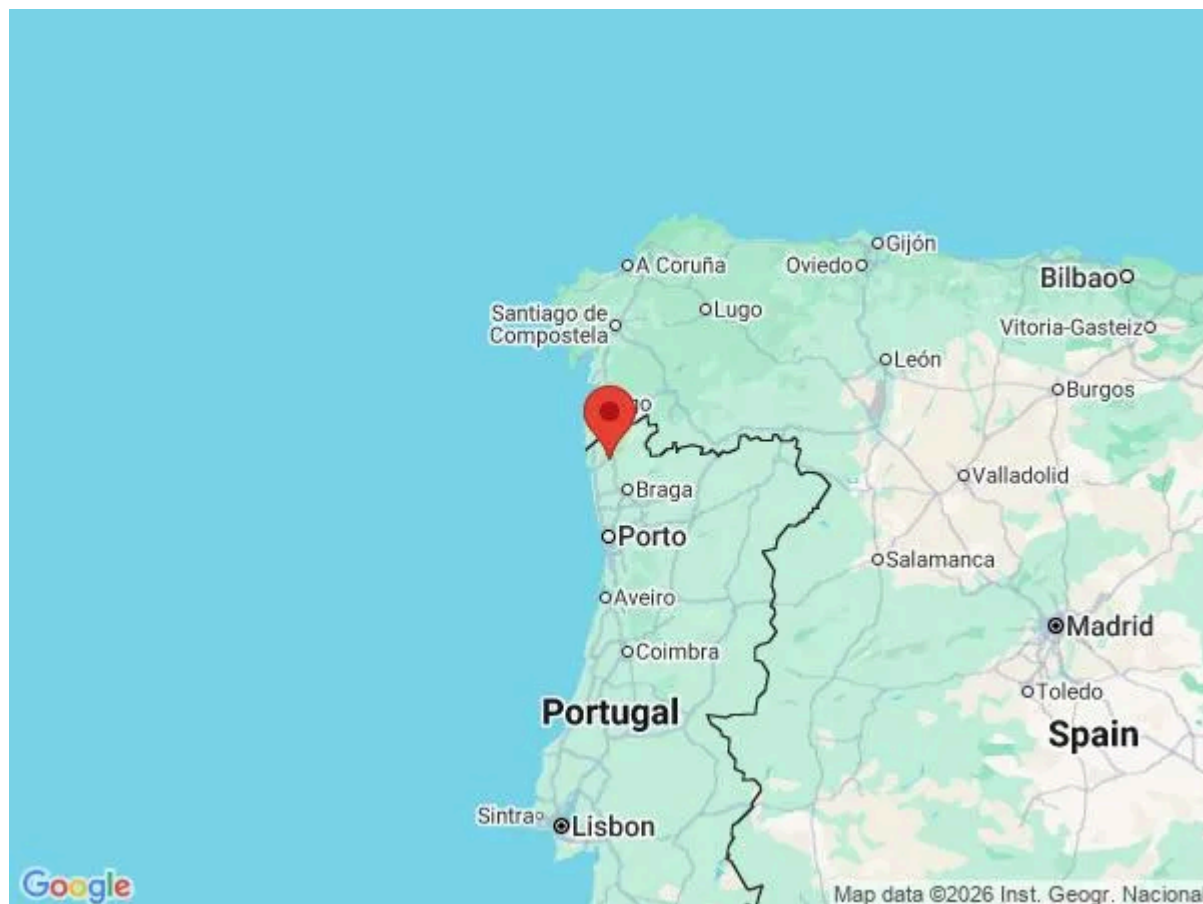
Just a stone's throw away lies the historic Ponte de Lima, a Roman town steeped in centuries of heritage. Wander its cobbled streets and you'll discover quaint cafes, artisan shops, and the majestic Ponte Romana bridge that spans the Lima river, offering postcard-worthy views at every turn.

For those with a taste for adventure, the surrounding countryside beckons with endless possibilities. Lace up your hiking boots and embark on scenic trails that wind through lush greenery, leading to hidden waterfalls and panoramic vistas. Or, saddle up for a leisurely horseback ride along winding paths, where every twist and turn reveals a new facet of natural splendour.

History buffs will find themselves enthralled by the region's wealth of cultural landmarks. From mediaeval castles to picturesque monasteries, each site tells a story of bygone eras and enduring legacies. Meanwhile, food enthusiasts can indulge in the bounty of local cuisine, with farm-fresh produce and world-renowned wines waiting to delight the palate.

As the day draws to a close, there's no shortage of ways to unwind and savour the moment. Take a leisurely stroll through the vineyards as the sun dips below the horizon, casting a golden glow over the landscape. Or, gather with loved ones for a leisurely picnic amidst the olive groves, where laughter and conversation flow as freely as the wine.

Whether you're seeking serenity or adventure, Casa Lumiana's location offers the perfect blend of relaxation



and exploration, inviting you to embrace the essence of Portugal's Minho region with open arms.

Local Amenities

Nearest Airport	Porto Airport (83 km)
Nearest Bar/Pub	One Lounge Bar (7 km)
Nearest Beach	River Beach - Praia Fluvial de Estorãos (3 km)
Nearest Golf	Axis Ponte de Lima Golf (9 km)
Nearest Restaurant	Repasto das Lagoas (4 km)
Nearest Supermarket	Continente Modelo (7 km)
Nearest Tennis	Padel Tennis Lounge (9 km)
Nearest Town/City	Ponte de Lima (7 km)

What we love

- We loved the spacious and rustic interior of Casa Liliana
- The cottage in the grounds, which sleeps two guests, is a great addition for those travelling with parents/grandparents, friends or older teens
- The whole family enjoyed making use of the villa's private pool

What you should know...

- Cots and highchairs are available on request for an additional fee
- Pets are not permitted at Casa Liliana
- All bedrooms feature double beds

Terms & Conditions

- **Security deposit:** €450 charged to client's credit card as a pre-authorisation two weeks before arrival and refunded two weeks after departure, subject to full inspection.
- **Arrival time:** Between 4 - 7 pm
- **Departure time:** 10 am
- **Energy costs included?:** Yes, included in the rental price.
- **Linen & towels included?:** Yes, included in the rental price.
- **Pets welcome?:** Not allowed.
- **Other Ts and Cs:**
 Cot/Crib extra of €10.71 per night.
 Welcome Pack extra of €45.00 /booking.
 High chair included in the rental price, please enquire before arrival.
- **Changeover day:** Flexible.
- **End of stay cleaning available?:** Yes. However, guests are required to leave the accommodation clean, tidy and in the same condition as on their arrival. Any extra cleaning, laundry, maintenance and/or rubbish disposal required will be charged against the security deposit.
- **Smoking Allowed?:** Smoking & Vaping are not permitted.
- **Minimum stay:** 5 nights during low season. All other durations on request.
- **Heating costs included?:** Not available on this property.
- **Pool heating charge?:** Not available at this property.
- **Tax:** Tourist tax is currently not required within the municipality of this villa, however many councils are introducing this across Portugal, so you may be required to pay this at time of travel.
- **Internet access?:** Wi-Fi internet access included.
- **Pool towels included?:** Yes, included in the rental price.