

Sirinat Room

Region: Phuket **Sleeps:** 3

Overview

Nestled on the ground floor and surrounded by vibrant greenery, the Sirinat Room offers a serene escape for travellers seeking comfort and relaxation. Spanning 38 square meters, these thoughtfully designed spaces feature a choice of a double bed or two single beds, ensuring a restful stay. Step onto your spacious terrace, where you can unwind and soak in the beauty of the garden at any time of day. For families, we offer the option of an extra bed or a complimentary baby cot upon request, making it easy to accommodate everyone.

The room is equipped with modern amenities, including hand-held and rain showers, a cosy sitting area, and complimentary Wi-Fi. Enjoy a variety of digital channels on your flat-screen TV, while the minibar provides refreshments for your convenience. With plush bathrobes, beach sandals, and a beach bag filled with towels, you'll be perfectly prepared for your days in paradise. Book your stay today and immerse yourself in the natural beauty of Dewa Phuket.

Facilities

Coffee Machine • Resort Villa • Hairdryer • Boat Trips • Ground Floor Bed & Bath • Wi-Fi/Internet • Golf Nearby • Air-Con • Canoeing/Kayaking • Watersports • Walk to Beach • Maid Service Included • Special Offer • Has Discount • Great Value • Walk to Village • Shared Pool • Beach Nearby • Cooking Classes Available • Spa Treatments Available • Transfers Available • On-Site Concierge • Breakfast Included • Meal delivery service • Bathroom Toiletries • Ideal for Babies & Toddlers • Ideal for Kids • Ideal for Teens • Walk to Restaurant • <1hr to Airport • Safety Deposit Box • All Bedrooms En-Suite • Smart TV • Outstanding Landscapes • Outdoor Pursuit & Activities • Tourist Towns & Villages



Interior & Grounds

Ground Floor

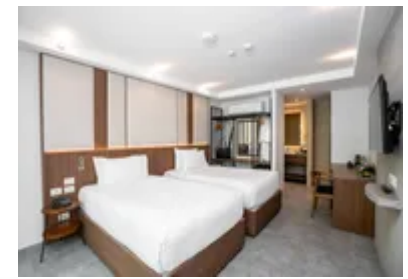
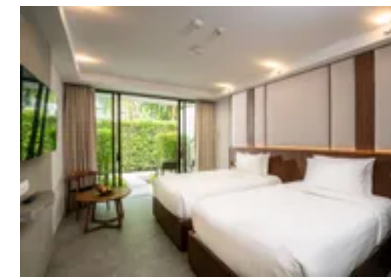
- Open plan living area with comfortable seating, TV and access to the garden
- Open plan bedroom with king size bed
- Bathroom with bath tub and walk-in shower

Exterior Grounds

- Ample terrace and garden area
- Covered terrace
- Outdoor dining

Additional facilities

- Wi-Fi connection
- Air conditioning
- Satellite TV
- Mini bar
- Coffee & tea maker
- Bathrobes & beach sandals
- Hairdryers
- Toiletries
- Daily Breakfast
- Daily 2 bottles of drinking water
- Use of bicycle (advance reservation required)
- Kayaking and paddleboard
- Aromatherapy burner (subject to request)



Location & Local Information

Dewa Phuket Resort is located on the picturesque northwest coast of Phuket, Thailand, in the serene area of Nai Yang Beach. This tranquil, family-friendly spot is nestled within the Sirinat National Park, offering a peaceful atmosphere surrounded by lush greenery and calm, crystal-clear waters. Nai Yang Beach is known for its relaxed vibe, far from the busier tourist areas of the island, making it ideal for those seeking a quiet retreat. The shallow waters and gentle waves are perfect for swimming, while the nearby coral reefs attract snorkelers and marine enthusiasts.

Despite its peaceful ambience, Dewa Phuket Resort is conveniently close to Phuket International Airport, just a short drive away. The surrounding area offers a range of local eateries, beach bars, and shops that provide a taste of authentic Thai culture. Nature lovers can explore the nearby national park, where walking trails and beachside paths lead to stunning coastal views and a rich variety of flora and fauna. This blend of natural beauty and convenience makes Dewa Phuket an attractive destination for travelers seeking both relaxation and adventure.

Local Amenities

Nearest Airport	Phuket International Airport (3 km)
Nearest Village	Ban Wong Li (1 km)
Nearest Town/City	Phuket City (18 km)
Nearest Restaurant	Black Ginger (2 km)
Nearest Bar/Pub	The High Five Bar (1 km)
Nearest Supermarket	Tops Daily Supermarket (350 m)
Nearest Beach	Nai Yang Beach (100 m)



Nearest Golf

Blue Canyon Country Club
(8 km)

What we love

- The Dewa Phuket Resort enjoys a fabulous location, just steps from the beautiful and tranquil Nai Yang Beach which sits within the wonderful Sirinath National Park
- Sirinat Room is a smart, spacious and immaculate. Doors to your room open to a gorgeous jungle garden where you can relax with a drink from your mini bar
- The resort offers outstanding amenities from fine dining and a stylish pool bar to a rejuvenating spa and a well-equipped gym. The resort offers a perfect blend of relaxation, comfort and luxury

What you should know...

- If you need an extra bed or a cot in your room, please ask for this in advance. There may be a small charge for the bed. If you have more than one child, you may like to look at our larger suites and villas
- The resort is very friendly. Nothing is too much to ask. You can enjoy in-room dining, in-room spa treatments or pool spa treatments on request
- There are extra charges for spa treatments, meals, drinks etc

Terms & Conditions

- **Security deposit:** Credit card details are required 2 weeks prior to departure for pre-authorisation.
- **Arrival time:** 3 pm
- **Departure time:** 12 pm
- **Energy costs included?:** Yes, included in the rental price.
- **Linen & towels included?:** Yes, included in the rental price.
- **Pets welcome?:** Not allowed.
- **Changeover day:** Flexible.
- **End of stay cleaning available?:** Yes. However, guests are required to leave the accommodation clean, tidy and in the same condition as on their arrival. Any extra cleaning, laundry, maintenance and/or rubbish disposal required will be charged against the security deposit.
- **Smoking Allowed?:** Smoking & Vaping are not permitted.
- **Minimum stay:** 1 - 2 nights, depending of season. All other durations on request.
- **Heating costs included?:** Yes, included in the rental price.
- **Pool heating charge?:** Not available on this property.
- **Tax:** Government tax and service charge included in the rental price.
- **Internet access?:** Wi-Fi internet access included.
- **Pool towels included?:** Yes, included in the rental price.