

Millet Cottage

Region: The South West **Sleeps:** 4

Overview

Our delightful holiday retreat, Millet Cottage, exudes timeless character and rustic charm. Dating back 300 years, this picturesque two-bedroom cottage promises an enchanting stay for up to four guests with access to the neighbouring lodge's amenities from indoor pool to tennis courts.

Step inside and be greeted by the warm embrace of history and comfort. The cottage boasts a tastefully furnished interior, blending traditional elements with modern conveniences. The ground floor welcomes you with an inviting open-plan layout adorned with an exquisite oak floor. Sink into the plush sofas by the crackling fireplace or bask in the natural light streaming through the French windows that lead to the enchanting garden.

Prepare delicious meals in the fully equipped kitchen, complete with oak flooring and all the essential amenities including a dishwasher, washing machine, and large fridge freezer. Enjoy your culinary creations in the adjacent south-facing conservatory, where a cosy breakfast nook awaits amidst panoramic garden views.

Entertainment is never far away, sink into a sofa arranged by the log fire, and settle down to watch a film on the flat-screen TV with Freesat and complimentary Wi-Fi access. Whether you're unwinding with loved ones or seeking a quiet moment, Millet Cottage offers the perfect setting.

Accommodations include a luxurious double bedroom featuring a king size bed and an en-suite shower and WC for added privacy. Additionally, there's a charming twin bedroom, where the beds can be zipped together, and a spacious family bathroom, ensuring ample space for everyone.

Outside, discover your own private oasis within the walled, south-facing garden. Relax on the terrace, sip a refreshing drink, and relish the tranquillity of your surroundings. Guests have access to private parking and the 5-acre garden shared by the neighbouring lodge. Beautiful gardens bedecked with sculptures, a tennis court, heated indoor pool and spa style hammam are all available to guests of Amaranth Cottage to add to their holiday experience.

Escape to the idyllic countryside and experience the magic of Kingham from the comfort of Millet Cottage. Immerse yourself in its timeless allure and create cherished moments in this enchanting retreat.



Facilities

Ideal for Kids • Historical Sites • Tennis Court • Walking/Hiking Paths • Walk to Village • Romantic • Maid Service Available • Cots (Cribs) • Heated Pool • Ideal for Teens • Indoor Pool • Shared Pool • Cottage • Parking Space • Walk to Restaurant • Wi-Fi/Internet • Rural Location • Decorated

for Christmas • Washing Machine • Outstanding Landscapes • Hairdryer •
Tourist Towns & Villages • TV • Laptop Friendly Workspace • DVD •
Dishwasher • Microwave • Satellite TV • Sauna/Steam • Animal farm •
Working Fireplace/Woodburner • Kid-friendly museum • Kid-friendly
excursions • Catering Available • Playground nearby • Board games •
Children's videos/DVDs • Children's books • Ideal for Babies & Toddlers •
High Chair(s) • Fenced Grounds

Interior & Grounds

Millet Cottage

Ground Floor

- Living room
- Well equipped kitchen
- Conservatory
- Utility room
- WC

First Floor

- Double bedroom with en-suite
- Twin bedroom* (zip & link so can be set up as a double on request)
- Shared bathroom and WC

Exterior Grounds

- Garden with garden furniture
- Access to Lodge Gardens
- Access to Indoor Pool and Hammam
- Access to tennis court and croquet

Additional Features

- Wi-Fi
- Free-sat TV
- Underfloor heating
- Fridge freezer
- Bed linen and towels provided
- Kitchen Utensils
- Highchair, stairgate and travel cot available on request
- Larger cot or new-born cradle available on request for an additional £20 supplement
- Parking

** Please ensure that you request whether you would like the second bedroom set up with a double or twin single beds at the time of booking.*



Location & Local Information

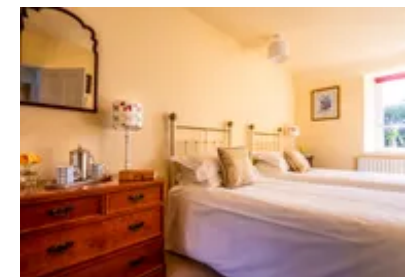
The local market town of Chipping Norton is a short distance from the cottage and is one of the most popular, thriving towns in the Cotswolds, with a wealth of independent stores, fabulous antique shops and even the recently famous “Diddly Squat Farm Shop” made famous by Clarkson’s Farm on Prime Video. Every third Saturday you can visit Chipping Norton’s Farmers’ Market and every Weds there is an Outdoor Market in the Market Place, bring your wallet and a big shopping basket!

Those who are members can head over to Soho Farmhouse, just twenty five minutes away in the car for some delicious food and drinks or head to one of the many local spas, such as Dormy House in Broadway that offer a day of deep relaxations, massage and treatments aplenty.

Those looking for some culture should head to the stunning English Heritage property of Blenheim Palace. With acres of beautiful grounds to roam, there is much to do, with the Palace playing host to a number of events and exhibitions throughout the year from food markets to Giffords Circus to a stunning Christmas light display. Also nearby is Chastleton House, a fine Jacobean mansion dating back to 1612.

Just under an hour away is the historic city of Oxford with its stunning range of university buildings, open to visitors to explore. Catch an Evensong at a chapel, or take a punt on the river, hiring a boat yourself or being transported by one of the local students. There is a fantastic shopping centre for a little retail therapy, or you can visit the Oxford Castle to enjoy a beautiful view from the top or explore the spooky prison at the depths.

Fans of Philip Pullman’s “His Dark Materials” trilogy will want to seek out the Trout Inn, a lovely riverside pub serving delicious food and local ales that was featured in the books themselves. A great place to stop off for a well-deserved pint after a long walk. If you are a keen hiker then a local circular walk from Chipping Norton to the Neolithic



structure of the Rollright Stones, considered one of the "Seven Wonders of the Cotswolds" is an excellent eight mile walk around the local area.

Local Amenities

Nearest Airport	London Heathrow Airport (114.5 km)
Nearest Train Station	Kingham Train Station (2 km)
Nearest Village	Kingham (In walking distance)
Nearest Town	Chipping Norton (7.5 km)
Nearest Restaurant	The Wild Rabbit (In walking distance)
Nearest Bar/Pub	The Kingham Plough (0.5 km)
Nearest Shop	Kingham Village Store (In walking distance)
Nearest Supermarket	Sainsbury's, Chipping Norton (7.5 km)

What we love

- Experience the enchantment of Millet Cottage, a 300-year-old retreat oozing with character, from its romantic four-poster bed to the crackling fireplace and French windows leading to the garden
- Dive into the indoor pool shared by the lodge and cottages or unwind in the spa style hammam.
- Unwind in the tranquillity of your own walled garden, basking in the sun on the terrace or enjoying al fresco dining amidst lush greenery, offering a serene escape from the bustle of everyday life
- Set in stunning grounds guests can enjoy access to Kingham Lodge's garden, croquet, and tennis court.

What you should know...

- There are no ground floor bedrooms.
- Guests can enjoy shared access to a shared indoor pool, tennis courts, hammam and gardens.
- A sofa bed located in the double bedroom is also available for use, subject to an additional £100 fee - please enquire if required.
- One travel cot is available at Millet Cottage. A wooden cot can be assembled on site at an additional cost of £20 if requested. Please note that cot linen is not provided, so please bring your own.

Terms & Conditions

- **Security deposit:** £500 charged to client's credit card as a pre-authorisation at least 2 weeks prior to arrival and refunded two weeks after departure, subject to full inspection.
- **Arrival time:** 4:00 pm
- **Departure time:** 10:00 am
- **Energy costs included?:** Yes, included in the rental price
- **Linen & towels included?:** Yes, linen, towels and pool towels are included in the rental price
- **Pets welcome?:** Up to two dogs welcome on request only and with prior agreement with the owner. If accepted, a pet supplement of £50 per pet will apply (payable locally).
- **Other Ts and Cs:** Use of the pool is included in the rental price. However, each cottage has an allocated pool time.
- **Changeover day:** Monday and Friday.
- **End of stay cleaning available?:** Yes. However, guests are required to leave the accommodation clean, tidy and in the same condition as on their arrival. Any extra cleaning, laundry, maintenance and/or rubbish disposal required will be charged against the security deposit.
- **Smoking Allowed?:** No smoking or vaping
- **Other 2:** Please ensure that you request whether you would like the second bedroom set up with a double or twin single beds at the time of booking.
- **Other 3:** A cot is available on request, subject to an additional £20 fee. Please note that cot linen is not provided, so please bring your own. Guests may also use the sofa bed in the double room, subject to an additional £100 fee.
- **Minimum stay:** 3 nights.
- **Heating costs included?:** Yes, included in the rental price.
- **Pool heating charge?:** No, pool heating is included in the rental price.
- **Stag & Hen Do Allowed? :** Not allowed