

# Howe House

**Region:** Snowdonia    **Sleeps:** 12

## Overview

Tucked away in the heart of Blaenau Ffestiniog, Howe House welcomes you to a peaceful retreat amidst the rugged beauty of Snowdonia National Park. As you arrive, the charming exterior of this historic villa stands proudly against the breathtaking landscape, offering a warm invitation to step inside and discover all it has to offer.

Upon entering, you are immediately drawn into a harmonious blend of old-world charm and contemporary comfort. The property, originally a chapel built in 1861, has been lovingly restored to maintain its character while providing all the modern conveniences you could need. The six spacious bedrooms are designed with relaxation in mind, each offering a serene escape with views of the surrounding hills. Whether you're hosting a large family or a group of friends, there's plenty of room to gather together or find a quiet spot to unwind.

The large, open-plan lounge beckons you to relax after a day of exploration. The cosy seating area is perfect for sinking into with a book or enjoying lively conversation, while the pool table adds a bit of fun and friendly competition. The kitchen, fully equipped and thoughtfully designed, provides a wonderful space for preparing meals, whether you're enjoying a casual breakfast or cooking up a feast for the whole group.

Step outside, and you're greeted by your own private garden. The tranquil setting makes it ideal for afternoon barbecues or simply soaking in the beauty of nature. From here, the stunning mountain views are ever-present, making it the perfect place to relax or start your next adventure.

With Snowdonia's renowned hiking trails, picturesque lakes, and cycling routes right on your doorstep, Howe House offers an incredible base to explore the natural wonders of the area. Whether you prefer a peaceful retreat or an action-packed holiday, this home provides the ideal setting for making lasting memories. Come and experience the serenity of Blaenau Ffestiniog at Howe House.

## Facilities

Lakes and Mountains • Walking/Hiking Paths • Historical Sites • Cycling • Ideal for Xmas/NY • Ideal for Parties • TV • Stag/Hen Allowed • Villa • Wi-Fi/Internet • Washing Machine • Decorated for Christmas • Great Value • Quirky (Unique) • Easy By Train • Pool/Snooker • Has Offer • Special Offer • Walk to Village • Rural Location • Cots (Cribs) • Indoor Games • Heritage Collection • Kid-friendly excursions • Cooking Classes Available • Yoga Classes Available • Spa Treatments Available • Catering Available • Children's books • Ideal for Babies & Toddlers • Ideal for Kids • Ideal for Teens • Pets on Request • Walk to Restaurant • Tumble Dryer •





# Interior & Grounds

## Howe House

### Ground Floor

- Open-plan living area
- Pool table
- Kitchen with breakfast island
- Utility room
- Snug with large corner sofa and TV
- 2 WCs

### First Floor

- 4 king-sized bedrooms
- 1 twin king-sized bedrooms
- Family bathroom

### Exterior

- Terrace with dining table
- Off road parking for 2 cars
- BBQ

### Additional Facilities

- Washing machine
- Dishwasher
- Hairdryer
- Smart TV
- Bluetooth sound system



# Location & Local Information

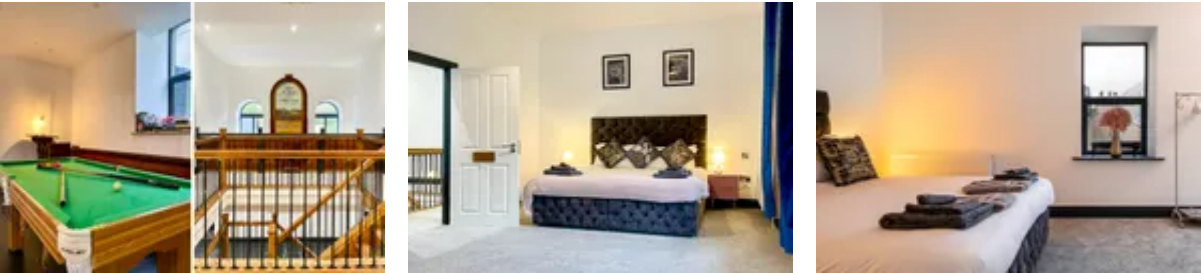
Howe House is located in Blaenau Ffestiniog, a charming town nestled within the heart of Snowdonia National Park in North Wales. Known for its rich industrial history and stunning natural beauty, the area offers a unique blend of outdoor adventures and cultural experiences. Surrounded by rugged mountains, deep valleys, and serene lakes, it's an ideal destination for those seeking to immerse themselves in nature.

Blaenau Ffestiniog is a gateway to some of the region's best hiking and cycling trails, with numerous routes that cater to all levels of experience. The nearby Ffestiniog Railway, one of the oldest heritage railways in the world, offers scenic journeys through the Snowdonia landscape. The town itself is steeped in history, with local attractions such as the Slate Museum providing a glimpse into its past.

For those looking to explore further, the stunning beaches of the Llyn Peninsula and the picturesque village of Betws-y-Coed are within easy reach, making it an excellent base for a variety of day trips. Whether you're seeking outdoor adventure or quiet relaxation, Blaenau Ffestiniog offers something for everyone.

## Local Amenities

Nearest Airport	Manchester Airport (157.5 km)
Nearest Ferry Port	Holyhead Ferry Terminal (88 km)
Nearest Train Station	Blaenau Ffestiniog Train Station (1 km)
Nearest Town	Blaenau Ffestiniog (In walking distance)
Nearest Town/City	Bangor (51.5 km)
Nearest Restaurant	Red Chillies (1 km)
Nearest Bar/Pub	King's Head (In walking distance)
Nearest Shop	Morrisons Daily (1 km)
Nearest Supermarket	Tesco Superstore, Porthmadog (20 km)
Nearest Beach	Morfa Bychan, Porthmadog (22.5 km)



Nearest Golf	Porthmadog Golf Club (22 km)
--------------	---------------------------------

## What we love

- Immerse yourself in the tranquil beauty of Blaenau Ffestiniog at Howe House, where modern comforts meet stunning natural surroundings.
- Experience the charm of history in a uniquely restored 1861 chapel, offering a one-of-a-kind stay at Howe House.
- Enjoy dining al fresco amongst the stunning scenery on the outdoor terrace.

## What you should know...

- Please note that there are parking spaces for 2 cars. Please enquire about additional parking options if required.
- One of the bedrooms is a king-sized twin room, sleeping up to four people.

# Terms & Conditions

- **Security deposit:** £400 charged to client's credit card as a pre-authorisation at least 2 weeks prior to arrival and refunded two weeks after departure, subject to full inspection.
- **Arrival time:** 4:00 pm
- **Departure time:** 10:00 am
- **Energy costs included?:** Yes, included in the rental price.
- **Linen & towels included?:** Yes, included in the rental price.
- **Pets welcome?:** Pets are welcome by prior agreement only. Please enquire at time of booking.
- **Changeover day:** Flexible.
- **End of stay cleaning available?:** Yes, standard changeover clean included. Guests are required to leave the accommodation clean, tidy and in the same condition as on their arrival. Any extra cleaning, laundry, maintenance and/or rubbish disposal required will be charged against the security deposit.
- **Smoking Allowed?:** Smoking & Vaping are not permitted.
- **Minimum stay:** 2 nights.
- **Heating costs included?:** Yes, included in the rental price.