

Chateau Chanteuse

Region: Dordogne Sleeps: 8

Overview

It's always a joy to discover gems such as Château Chanteuse, a beautiful and historic home exuding French charm alongside a genuine sense of warmth. This is the perfect place to escape day-to-day life – unwind in the Limousin countryside whilst being within easy reach of Lac de Saint-Pardoux and the gorgeous city of Limoges.

Dating as far back as the 15th century, the surrounding scenery is glorious at Château Chanteuse and it is such a relaxing home to stay in. Downstairs you will find the pretty lounge, a traditional kitchen and a dining area with a cocktail bar (including a fridge and cocktail equipment!). Enjoy an evening apéritif on the terrace followed by an al-fresco feast on the lawn with loved ones. The French grounds feature shady trees as well as summer roses, foxgloves, irises, wildflowers and idyllic views.

The house sleeps up to 8 guests across its four first-floor double bedrooms. Guests can expect charming French furnishings and rich fabrics to remind you of a bygone era. Every bedroom features its own en suite shower room whilst two have their own little salons. The vistas through the characterful bedroom windows are wonderful – listen out for the gentle sound of owls or nightingales as you rest.

Set on a hillside, there are lovely walks straight from the château grounds. A village with a *boulangerie* is just 4km away or head to the small historic town of Bellac, around 15 minutes by car, with its delightful markets, historic lanes and peaceful riverside setting home to one of France's oldest medieval stone bridges. Take time to visit the historic villages of Le Dorat and Mortemart (one of France's '*Plus Beaux Villages*') and appreciate the natural beauty of Lac de Saint-Pardoux, less than half an hour away.



Visit Limoges early in your stay as you will yearn to return. Relatively off the tourist track yet famed for its fine Limoges porcelain, it is an amazing city with impressive architecture, vibrant food markets, inviting museums and galleries as well as the timeless narrow lanes of the captivating Quartier de la Boucherie.

Facilities

Wi-Fi/Internet • Fishing • Recommended • Weddings • TV • Washing Machine • Chateaux & Castles • Cycling • Historical Sites • Watersports • Horse Riding • Walking/Hiking Paths • Exclusive • Special Offer • Has Offer • Great Value • Rural Location • Indoor Games • Board games • Ideal for Kids • Ideal for Teens • <1hr to Airport • Tumble Dryer • Microwave • All Bedrooms En-Suite • Heating • Caretaker/Owner on Site • Parking Space • Outstanding Landscapes • Outdoor Pursuit & Activities • Tourist Towns & Villages

Interior & Grounds

Château Interiors

Ground Floor

- Lounge with TV and library corner
- Dining room with large dining table and cocktail bar
- Kitchen, well-equipped including oven, microwave, fridge-freezer and breakfast table
- Laundry room
- Guest WC

First Floor

- Bedroom with double bed, TV and en suite bathroom with shower, sink and WC
- Bedroom with double bed, sitting room, TV and en suite bathroom with shower, sink and WC
- Bedroom suite with king-size double bed, TV and en suite bathroom with walk-in shower, sink and WC
- Bedroom with small double bed, sitting area and en suite bathroom with shower, sink and WC

Outside Grounds

- Patio
- AI-fresco dining table
- Garden furnishings
- Garden with flowers and trees

Facilities

- Portable air-conditioning unit (living room)
- Fans (bedroom)
- Cocktail bar
- Books
- Ironing facilities



Location & Local Information

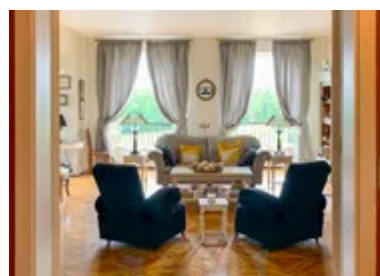
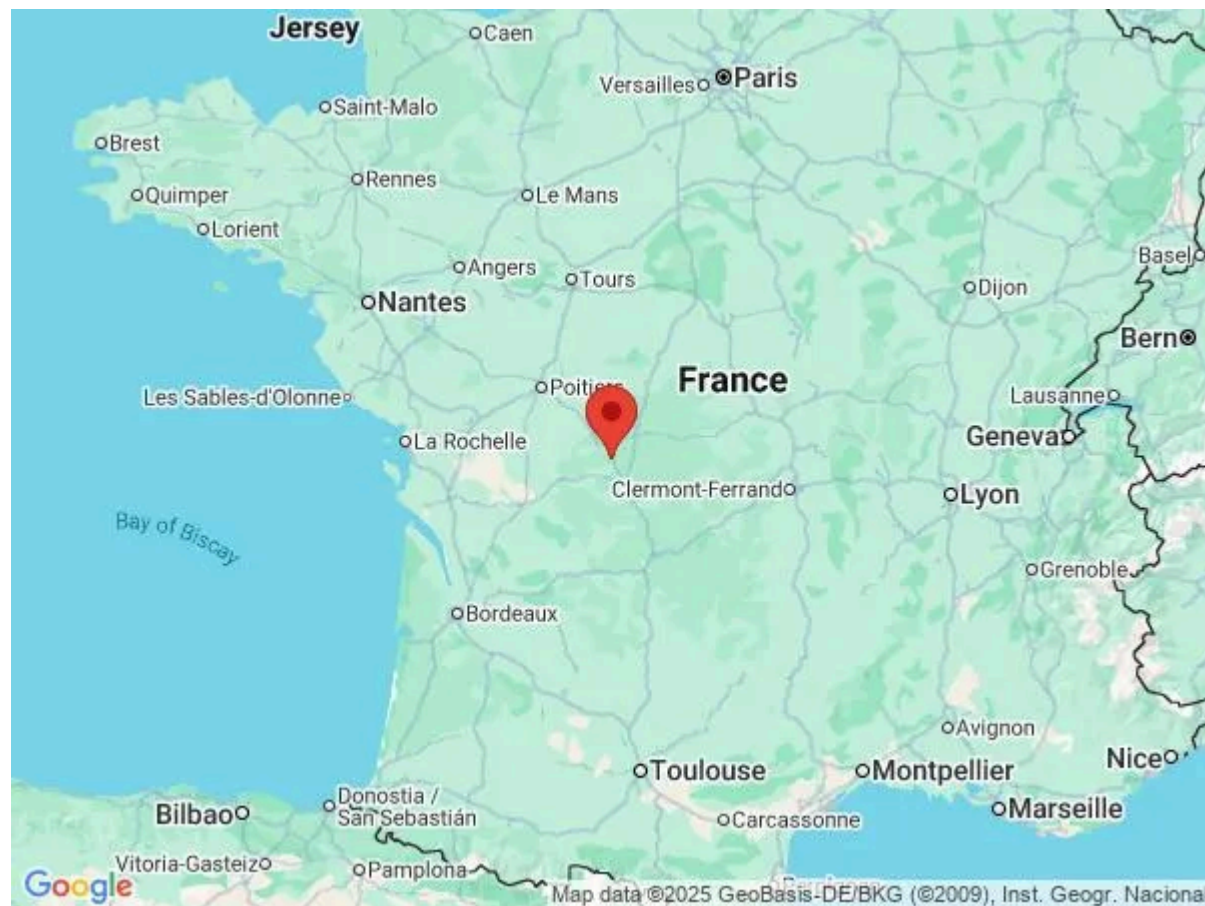
Château Chanteuse is in the Limousin countryside, part of the Haute-Vienne department and only half an hour from the pretty city of Limoges. Fly into Limoges Airport (22km) or arrive into Limoges' elegant Art Nouveau train station with direct arrivals from Paris (Paris to Limoges takes 3 hours 30 minutes).

The house enjoys a rural setting yet with other buildings close by and just a 2-minute drive from the main road connecting Limoges and Bellac, meaning easy access to the many highlights of the region. The nearest village is 4km away, home to a bakery, whilst you will find a couple of restaurants and a small handful of other useful amenities (pharmacy, *boulangerie-pâtisserie* and small supermarket) in Nantiat (6km).

Bellac (14km) is a picturesque town with a rich heritage – it is a charming place to explore with its historic houses, pretty streets and trail leading down to the River Vincou. Walk over the stone bridge, said to be one of the oldest medieval bridges in France, and admire the peaceful setting – there is a characterful café-bar with a terrace overlooking the river. A market takes place on Saturday, Wednesday and Thursday mornings – pick up delicious local produce for a riverside picnic. Furthermore, if staying in early July look out for long-established Le Festival National de Bellac for theatre and music concerts.

Other gems of the area include historic Mortemart (16km), classified as one of France's '*Plus Beaux Villages*', and Le Dorat (26km) an attractive village dating back to the 15th century, home to the much-admired Collegiale Saint-Pierre-de-Dorat.

It is less than half an hour to reach the shores of the magnificent Lac de Saint-Pardoux. There are various lakeside beaches and outdoor pursuits including cycling, mountain biking, nature walks, fitness trails, tennis and summer water-based activities such as boating, canoeing, kayaking, pedal boats, sailing and more. There is also a



public swimming pool with slides and a tree-top activity centre with trails and ziplines (including over the lake!).

Local Amenities

Nearest Airport	Limoges Airport (22km)
Nearest Airport 2	Aéroport de Poitiers-Biard (106km)
Nearest Beach	Lakeside beach at Lac de Saint Pardoux (21km)
Nearest City	Limoges (27km)
Nearest Golf	Golf Club de Mortemart/Golf Club Limoges (17km/35km)
Nearest Restaurant	Nantiat/Bellac (6km/14km)
Nearest Shop	Bakery in local village (4.5km)
Nearest Supermarket	U Express (6.5km)
Nearest Town	Bellac (14km)
Nearest Train Station	Gare de Limoges-Bénédictins (27km)
Nearest Village	Small village (4.5km)

What we love

- Embrace the timeless French charm of this beautiful château that dates back to the 15th century.
- Sit back admiring the foxgloves, roses, wildflowers and huge trees in the glorious château garden with idyllic views.
- The huge Lac de Saint-Pardoux is less than half an hour away for magnificent nature and a vast range of outdoor activities.
- Limoges is also easily reached, a wonderful city off the tourist trail yet so loved for its ceramics and historic ambience.

What you should know...

- The welcoming yet discreet owner sometimes lives in a different part of the château and there is a Farmer's cottage next door.
- Please note that there is a portable air-conditioning unit in the living room.
- We recommend hiring a car in order to fully discover all the delights the area has to offer!

Terms & Conditions

- **Security deposit:** €500 charged to client's credit card as a pre-authorisation at least 2 weeks prior to arrival and refunded two weeks after departure, subject to full inspection.
- **Arrival time:** 6.00 p.m.
- **Departure time:** 10.00 a.m.
- **Energy costs included?:** Yes.
- **Linen & towels included?:** Yes.
- **Pets welcome?:** Not allowed.
- **Other Ts and Cs:** Weddings and any special events are on request only and subject to prior arrangement with the owner and additional charges. Stag/hen parties are not allowed.
- **Changeover day:** Friday. All other changeover days on request.
- **End of stay cleaning available?:** No. €400, payable locally. This is for a standard changeover clean. Guests are required to leave the accommodation clean, tidy and in the same condition as on their arrival. Any extra cleaning, laundry, maintenance and/or rubbish disposal required will be charged against the security deposit.
- **Smoking Allowed?:** No.
- **Minimum stay:** 7 nights. All other durations on request.
- **Heating costs included?:** Yes.