

# The Cloisters

Region: East Of England    Sleeps: 23

---

## Overview

Nestled in the tranquil countryside just 9 miles from Bury St. Edmunds, The Cloisters offers an idyllic escape. Dating back to the 1700s and set amidst 1000 acres of picturesque parkland and woodland, this spacious retreat beckons families, friends, or corporate gatherings seeking respite from the bustle of everyday life.

Accommodating up to 23 guests, The Cloisters provides ample space and comfort for all. With significant renovations completed over the past decade and ongoing conservation projects throughout the estate, it stands as the ultimate getaway. Comprising four charming holiday cottages and a stunning dining area/event space, every corner exudes warmth and character.

Whether you're unwinding in the cozy living areas, enjoying al fresco dining in the expansive garden or elegant dining room, or taking a dip in one of the hot tubs under the stars, there's something for everyone to enjoy. Featuring 10 impeccably refurbished bedrooms and 2 additional sofa beds, relaxation is inevitable.

Unwind and create lasting memories in the beauty of Suffolk's countryside, both within the estate and beyond, while indulging in the modern amenities and homely touches offered at The Cloisters.

## Facilities

Ideal for Kids • Walking/Hiking Paths • Historical Sites • Ideal for Xmas/NY • Special Offer • Pets on Request • Cots (Cribs) • Ideal for Teens • Great Value • Has Discount • Ground Floor Bed & Bath • Heritage Collection • Parking Space • Country Estate • Wi-Fi/Internet • Decorated for Christmas • Rural Location • Bath mat • Washing Machine • Outstanding Landscapes • Tourist Towns & Villages • Hot Tub • Dishwasher • Microwave • Smart TV • Animal farm • Working Fireplace/Woodburner • Heating • Kid-friendly museum • Kid-friendly excursions • Water excursions/Boat trips • Board



games • Children's books • Swings • Slide • Climbing frame • Ideal for  
Babies & Toddlers • Footballs • Stair gates • Mattress protector • Booster  
seat • Plastic crockery • Changing mat • High Chair(s)

# Interior & Grounds

## The Cloisters

### Cottage 1 (Sleeps 4-7)

#### Ground Floor

- Lobby area for shoes and coats
- Living room with sofa bed
- Spacious kitchen/dining room
- Bathroom with large shower
- Patio doors leading onto a Juliette balcony

#### First Floor

- Double bedroom
- Twin bedroom
- Bathroom with bath and over-bath-shower
- Small room with single bed and cot (\*there are no windows in this room)

### Cottage 2 (Sleeps 6-8)

#### Ground Floor

- Double bedroom with ensuite shower room
- Twin bedroom
- Twin bedroom
- Family bathroom

#### Lower Ground Floor

- Open plan living/dining space with conservation skylights
- Double doors leading to a private patio
- Comfortable living space with a woodburning stove and a sofa bed
- Fully equipped kitchen

#### Exterior

- Private patio area with dining table
- BBQ available

### Cottage 3 (Sleeps 4)

#### Ground Floor

- Wide entrance hall
- Brights and airy kitchen/dining/living area
- Twin bedroom
- WC
- Balcony

#### Lower Ground Floor

- Master bedroom with double bed and bathroom with bath and over-bath-shower

### Cottage 4 (Sleeps 4)

#### Ground Floor

- Living/dining area with fireplace
- Kitchen



#### *First Floor*

- Master bedroom with double bed
- Family bathroom with walk in shower

#### *Second Floor*

- Twin bedroom with views of the courtyard and wider estate

#### **Additional Facilities**

- All cottages have flat screen smart TVs
- Communal garden and courtyard shared amongst all cottages
- Walled garden, a secure play area for toddlers
- Dog park (with some agility equipment, where dogs can be let of the lead)
- Hot tubs available on request and subject to additional charges (please see T&Cs for more info)

## Location & Local Information

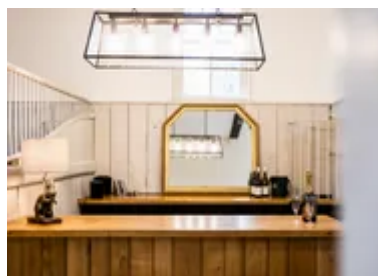
Nestled amidst the serene landscapes of Suffolk, The Cloisters awaits. Discover a haven where historic charm meets contemporary luxury. Immerse yourself in the allure of sprawling gardens, perfect for tranquil strolls or picnics amidst nature's embrace.

For the adventurous spirits, nearby attractions beckon; from the majestic St Edmundsbury Cathedral to the vibrant markets of Bury St Edmunds town center, there's no shortage of cultural delights to uncover. A visit to the Theatre Royal is a must, offering a diverse array of performances, ranging from classic plays to contemporary productions. Indulge in a culinary journey at local eateries, savoring the flavors of Suffolk's cuisine. Just a short distance away lies the well-loved West Stow Anglo-Saxon Village, where history comes to life through meticulously reconstructed buildings and archaeological treasures.

Whether seeking relaxation or adventure, The Cloisters invites you to create lasting memories amidst Suffolk's beauty and heritage, right at your doorstep.

### Local Amenities

Nearest Airport	<b>Norwich Airport</b> (63 km)
Nearest Ferry Port	<b>Harwich Ferry Terminal</b> (83 km)
Nearest Train Station	<b>Thurston Train Station</b> (8.5 km)
Nearest Village	<b>Stowlangtoft</b> (1.5 km)
Nearest Town	<b>Bury St Edmunds</b> (16.5 km)
Nearest Restaurant	<b>The Leaping Hare, Wyken Vineyard</b> (2.5 km)
Nearest Bar/Pub	<b>The Norton Dog</b> (4.5 km)



Nearest Shop	<b>Budgens, Norton Service Station</b> <b>(4.5 km)</b>
Nearest Supermarket	<b>Sainsbury's, Bury St Edmunds</b> <b>(13.5 km)</b>
Nearest Beach	<b>Aldeburgh Beach</b> <b>(67 km)</b>
Nearest Golf	<b>Stowmarket Golf Club</b> <b>(14 km)</b>
Nearest Tennis	<b>Woolpit Tennis Club</b> <b>(9.5 km)</b>

---

## What we love

- With its four cottages, The Cloisters offers an ideal setting for larger groups, ensuring privacy and comfort during your stay.
- Spanning 1000 acres of parkland, woodland and pasture, the estate provides a serene and tranquil environment for exploration and relaxation throughout your visit.
- The estate features a stunning event space and dining area, perfect for hosting special occasions and gatherings, accommodating up to 23 people for an unforgettable experience.

## What you should know...

- Please note that use of the hot tubs are subject to additional charges. Please see T&Cs for more details.
- Please note that two of the beds are sofa beds (in cottage 1 and cottage 2), and one single bed is in a room with no windows.
- Pets are welcome in The Cloisters. However, they must be approved at time of booking and are subject to a small additional charge.

# Terms & Conditions

- **Security deposit:** £500 charged to client's credit card as a pre-authorisation at least 2 weeks prior to arrival and refunded two weeks after departure, subject to full inspection.
- **Arrival time:** 3:00 pm
- **Departure time:** 10:00 am
- **Energy costs included?:** Yes, included in the rental price
- **Linen & towels included?:** Yes, included in the rental price
- **Pets welcome?:** Yes, by prior agreement only and subject to an additional small charge. Please enquire at time of booking.
- **Other Ts and Cs:** Hot tub towels can be provided at an additional cost.
- **Changeover day:** All days
- **End of stay cleaning:** Standard changeover clean included in the price. Guests are required to leave the accommodation clean, tidy and in the same condition as on their arrival. Any extra cleaning, laundry, maintenance and/or rubbish disposal required will be charged against the security deposit.
- **Smoking Allowed?:** No smoking or vaping
- **Minimum stay:** 2 nights
- **Heating costs included?:** Yes, included in the rental price
- **Stag & Hen Do Allowed? :** Hen Do's welcome, but no Stag Do's.