

# Chalet Bijoux

**Region:** Espace Killy   **Sleeps:** 12

---

## Overview

Nestled within a charming 'hamlet' alongside five luxury chalets, Chalet Bijoux presents a unique concept, blending alpine tradition with bespoke services. This chalet offers accommodation for up to 12 guests across five floors, featuring four double bedrooms and one room for four guests, each with its own en-suite bathroom. The spacious living room, with an open fireplace, leads to a dining area and fully equipped kitchen, providing a cosy ambience for gatherings. Chalet Bijoux boasts a private spa, including an indoor swimming pool, sauna, steam room, and massage room, ensuring relaxation and rejuvenation after a day of adventure. Additional amenities include a ski room and lift for convenience. Moreover, guests benefit from a private butler and access to 5-star hotel facilities at the adjacent hotel, including a Wellness Centre with a heated indoor swimming pool, sauna, steam room, and relaxation space, offering the epitome of luxury and comfort year-round.

**The chalet is available year-round, but facilities, property and local amenities may vary depending upon season.**

## Winter | Ski Chalet

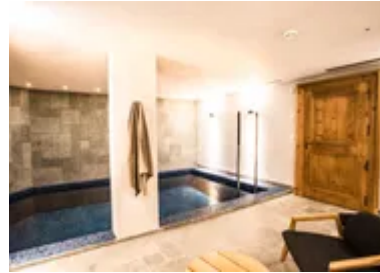
### December - April

In winter, Chalet Bijoux transforms into a cosy haven for snow enthusiasts, offering easy access to the slopes for exhilarating days of skiing and snowboarding. Afterwards, guests can retreat to the warmth of the chalet's inviting interiors, featuring spacious living areas and tastefully designed bedrooms with en-suite bathrooms. The private spa, complete with an indoor swimming pool, sauna, steam room, and massage facilities, provides the perfect setting for relaxation and rejuvenation after a day on the slopes. With its convenient location and luxurious amenities, Chalet Bijoux offers guests an unforgettable winter retreat in the heart of the French Alps.

## Summer | Alpine Chalet

### June - September

During the summer months, Chalet Bijoux offers families a serene escape amidst the breathtaking mountain scenery of the French Alps. Guests can explore scenic hiking trails, go mountain biking, or relax and soak in the tranquil surroundings. The chalet's spacious living areas and fully equipped kitchen provide a comfortable setting for gatherings and meals. The private spa offers a refreshing oasis with its indoor swimming pool, sauna, steam room,



and massage facilities, ensuring relaxation and rejuvenation after a day of outdoor adventures. With its luxury and natural beauty blend, Chalet Bijoux promises an unforgettable summer getaway for guests seeking peace and tranquillity in the mountains.

## Facilities

Maid Service Included • Chef/Cook Included • Wow Factor • Spa/Massage  
• Walk to Village • Wi-Fi/Internet • Ski Chalet • Summer Chalet • Wellness  
• Half Board • Catered • Babysitting Available • On-Site Concierge •  
Breakfast Included • Butler Included • Private Pool • Bathroom Toiletries •  
Indoor Pool • Ideal for Kids • Ideal for Teens • Pets on Request • Walk to  
Restaurant • Coffee Machine • Hairdryer • Smart TV • TV • Sauna/Steam  
• Working Fireplace/Woodburner • Heating • Parking Space •  
Walking/Hiking Paths • Skiing • Cycling • Outstanding Landscapes •  
Outdoor Pursuit & Activities • Tourist Towns & Villages

# Interior & Grounds

## The Chalet

### *Interiors (350m2)*

- King size or twin beds, TV, terrace, seating area. Ensuite bathroom with shower and bath.
- King size or twin beds, TV. Ensuite bathroom with shower and bath.
- King size bed or twin beds, TV, terrace. Ensuite bathroom with shower and bath.
- King size or twin beds, TV, seating area. Ensuite bathroom with shower and bath.
- King size or twin beds, TV, access to an adjoining room with bunk beds, sleeping, two children. Family bathroom with shower and bath.
- Living area with open fireplace
- Dining room
- Fully equipped kitchen
- Wellness centre with private spa, indoor pool, sauna, steam and massage room
- Ski room

### *Outside Grounds*

- Parking for 2 vehicles
- Terrace/ Balcony
- Lift

### **Additional Facilities**

- Access to neighbouring hotel facilities
- Heated boot dryers
- Sound system
- Apple TV

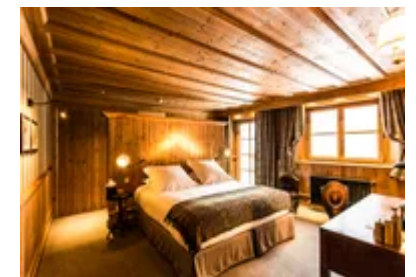
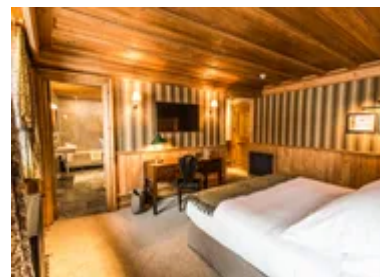




## Location & Local Information

Within a quaint 'hamlet' of five luxury chalets, Chalet Bijoux enjoys a privileged location in the heart of the French Alps. Surrounded by majestic mountains and breathtaking natural beauty, this idyllic setting offers guests a peaceful retreat from the hustle and bustle of everyday life. With excellent slope access in winter, guests can easily hit the slopes of the nearby ski area, while in summer, the surrounding landscape transforms into a playground for outdoor enthusiasts, with hiking trails, mountain biking routes, and scenic viewpoints waiting to be explored. Additionally, the chalet's proximity to the village amenities ensures convenience for guests, allowing them to immerse themselves in the local culture and cuisine. Whether seeking adventure on the slopes or relaxation amidst nature, Chalet Bijoux's location provides the perfect base for an unforgettable mountain getaway.

All-Year Activities	Winter Activities	Summer Activities
<ul style="list-style-type: none"> <li>- Skiing</li> <li>- Paragliding</li> <li>- Ice Skating</li> <li>- Mountaineering</li> <li>- Guided Tours</li> <li>- Hiking</li> <li>- Altitude Experiences</li> <li>- Horse Riding</li> <li>- Bowling</li> <li>- Local Markets</li> <li>- Aquatics</li> <li>- Fitness Courses</li> </ul>	<ul style="list-style-type: none"> <li>- Ski Off Piste</li> <li>- Ski Touring</li> <li>- Pedestrian and snowshoer walks</li> <li>- Snowboarding</li> <li>- Cross Country Skiing</li> <li>- Ice Climbing</li> <li>- Dog Sledging</li> <li>- Heliski</li> <li>- Snowshoeing</li> <li>- Speed Riding</li> <li>- Ski Joering</li> <li>- Adaptive Skiing</li> <li>- MTB on snow</li> <li>- First tracks skiing</li> <li>- Bun J Ride</li> <li>- Ice Diving</li> <li>- Ice Floating</li> <li>- Snowtubing</li> <li>- Microlight</li> <li>- Evening in a yurt</li> <li>- Luge Snooc</li> <li>- Moonbikes</li> <li>- Snowmobiling</li> </ul>	<ul style="list-style-type: none"> <li>- Trekking and Hiking</li> <li>- Mountain Bike / eBike</li> <li>- Trail Running</li> <li>- Rock Climbing</li> <li>- Road Cycling</li> <li>- Water Sports</li> <li>- Golf / Mini-golf</li> <li>- Adventure and Fun Parks</li> <li>- Tennis</li> <li>- Squash</li> <li>- Lake Swimming</li> <li>- Fishing</li> <li>- Paintballing</li> <li>- Trampolining</li> <li>- Archery and rifle shooting</li> <li>- Acroland</li> <li>- Skateboarding</li> <li>- Dam Visits</li> <li>- White water swimming</li> <li>- Kayaking / Rafting</li> <li>- Via Ferreta</li> <li>- Canyoning</li> <li>- Quad and Buggy Driving</li> </ul>



## Local Amenities

Nearest Airport	Geneva Airport (223 km)
Nearest Town/City	Val d'Isère (500 m)

Nearest Restaurant	La Corniche (350 m)
Nearest Bar/Pub	Bleu Note Bar (550 m)
Nearest Piste	Rogoney (650 m)
Nearest Ski Lift	Val d'Isère Station de Ski (650 m)
Nearest Ski Hire	Skiset Aigle des neiges (300 m)
Nearest Supermarket	SPAR Supermarché (250 m)
Nearest Golf	Le Manchet Business Park (4.2 km)
Nearest Tennis	Le Manchet Business Park (4.2 km)
Nearest Track	Rogoney (650 m)
Nearest Lift	Val d'Isère Station de Ski (650 m)
Nearest Equipment Hire	Intersport (500 m)

## What we love

- Chalet Bijoux offers families a serene retreat in the stunning French Alps, which provides easy access to outdoor adventures and village amenities.
- The chalet features spacious accommodation for up to 12 guests across five floors, including bedrooms with en-suite bathrooms; the chalet ensures comfort and convenience for families seeking relaxation and adventure.
- Chalet Bijoux is perfectly located near hiking trails and mountain biking routes in summer.

## What you should know...

- Guests have access to a private chef but please note that lunch comes at an extra cost.
- Ski passes to the Espace Killy ski area can be acquired through concierge for an additional cost.

# Terms & Conditions

- **Security deposit:** NA
- **Arrival time:** Check-in 4.00 PM.
- **Departure time:** Check-out 10.00 AM.
- **Energy costs included?:** Yes, included in the rental price.
- **Linen & towels included?:** Yes, included in the rental price.
- **Pets welcome?:** On request only and with prior agreement with the owner. If accepted, a pet supplement of €30 per pet per day will apply (paid locally).
- **Changeover day:** Flexible.
- **End of stay cleaning available?:** Yes daily housekeeping included. However, guests are required to leave the accommodation clean, tidy and in the same condition as on their arrival. Any extra cleaning, laundry, maintenance and/or garbage disposal required will be charged against the security deposit.
- **Smoking Allowed?:** Smoking & Vaping are not permitted.
- **Minimum stay:** 4 nights.
- **Heating costs included?:** Yes, included in the rental price.
- **Tax:** French Visitors Tax payable alongside balance (typically costs €1-€5 per adult per night- please enquire if exact amount is required).
- **Internet access?:** Wi-Fi internet access included.

**The chalet is available year-round, but facilities, property and local amenities may vary depending upon season.**