

# Chalet Bouts

Region: Portes du Soleil Sleeps: 8

## Overview

Chalet Bouts is a modern alpine retreat that brings together warm timber finishes, generous living spaces and beautiful mountain views. Set in a peaceful and secluded position inbetween Les Gets and Morzine ski areas, this welcoming chalet offers a relaxing escape for families and groups seeking comfort and privacy in the Portes du Soleil. Guests can unwind in the open plan living area where soft furnishings and a feature fireplace create a calming atmosphere after days spent exploring the mountains. The kitchen and dining space are ideal for sociable meals and lead out onto a wide terrace that captures the surrounding scenery. A private hot tub and sauna add to the sense of wellbeing and offer a soothing end to the day.

In winter, Chalet Bouts becomes a tranquil base for accessing the vast ski area. The nearest lifts and the centre of Morzine are a drive away, making a car essential for reaching the slopes, ski schools, restaurants and shops. This peaceful setting rewards you with uninterrupted views and a quiet atmosphere away from the bustle of the resort, perfect for relaxed evenings after adventures on the snow.

Summer stays are equally memorable. The region offers mountain biking, hiking trails, watersports and scenic drives, all within easy reach by car. After active days outdoors, the chalet's garden and terrace provide a restful space to enjoy the long mountain evenings. Whether visiting for winter sports or warm weather exploration, Chalet Bouts offers a comfortable and stylish home in a serene location.

## Facilities

Cycling • Boot Heaters • Ski Room • Mountain View • Bus/Shuttle To Slopes • Wellness • Ski Chalet • Ideal for Xmas/NY • Paragliding • Self-Catered • Skiing • Tennis Nearby • Watersports • Horse Riding • Walking/Hiking Paths • Ideal for Kids • Golf Nearby • Special Offer • Ideal for Teens • Cots (Cribs) • Has Discount • Chef/Cook Available • Modern • Parking Space • Walk to Restaurant • Wi-Fi/Internet • Lakes and Mountains • Summer Chalet • Rural Location • Washing Machine • Outstanding Landscapes • Coffee Machine • Outdoor Pursuit & Activities • Hairdryer • Tourist Towns & Villages • Table Tennis • Hot Tub • Tumble Dryer • Dishwasher • Microwave • Smart TV • Sauna/Steam • Working Fireplace/Woodburner • Heating • Pre-Stocked Fridge Available • Transfers Available • Breakfast Available • Babysitting Available • Ideal for Babies & Toddlers • High Chair(s)



# Interior & Grounds

## The Chalet (165 sqm)

### *Interior*

#### *Ground Floor*

- Ski room
- Sauna
- Bunk room with bunk bed (sleeping 2 children) and sofa
- WC
- Shower room and sink

#### *First Floor*

- Open-plan kitchen, dining and living area
- Fully-equipped kitchen
- Fireplace
- Terrace access

#### *Second Floor*

- Bedroom 1: Double bed, ensuite bathroom with shower, WC and sink, wardrobes and desk
- Bedroom 2: Double bed, private terrace area, wardrobes and desk
- Bedroom 3: Double bed, wardrobes and desk
- Separate bathroom shared between bedroom 2 & 3 with shower, sink and WC

### *Exterior*

- Terrace
- Garden
- Hot tub
- Ski room
- Panoramic views
- Parking space

### **Additional Facilities**

- Wi Fi
- Smart TV
- Washing machine
- Hairdryer
- Fireplace
- Smart TV
- Cot and highchair available (on request)



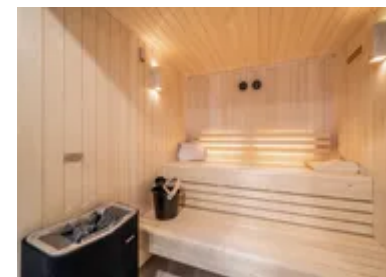
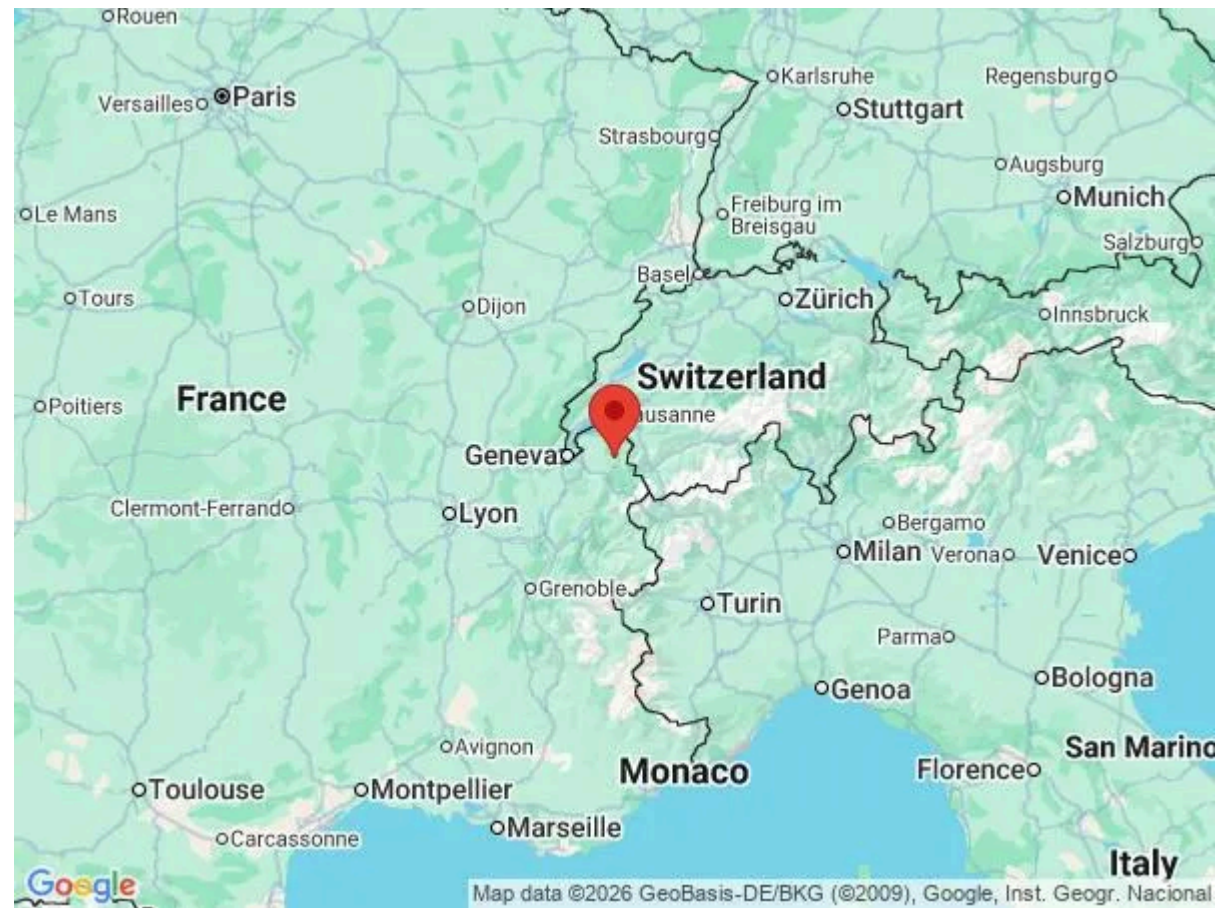
# Location & Local Information

Chalet Bouts enjoys a peaceful and secluded setting in the hamlet of La Côte d'Arbroz, a quiet mountainside location that offers guests an escape from the lively pace of Morzine. This elevated position provides wide open views across the surrounding peaks and a calm atmosphere throughout the year. While the chalet feels wonderfully removed from the bustle of the resort, guests should note that a car is essential. The centre of Morzine, the ski lifts, supermarkets and restaurants are all reached by a short drive, making this location ideal for those who value privacy and space while still wanting access to the wider Portes du Soleil.

In winter, the region offers an impressive network of pistes stretching across both France and Switzerland. The nearest lift stations and ski schools can be reached easily by car, allowing you to enjoy a relaxed start and finish to each day on the snow. During the summer months the area transforms into a landscape of hiking trails, cycling routes, lakes and natural viewpoints. With its quiet hillside setting and beautiful surroundings, Chalet Bouts offers a serene base for exploring the best of this alpine region.

## Local Amenities

Nearest Airport	<b>Geneva Airport</b> (80 km)
Nearest Airport	<b>Chambéry</b> (136 km)
Nearest Bar/Pub	<b>L'Roteli</b> (250 m)
Nearest Bar/Pub	<b>IBEX The wood Yard</b> (7.1 km)
Nearest Golf	<b>Golf Les Gets</b> (12.2 km)
Nearest Piste	<b>Le Stade</b> (6 km)
Nearest Restaurant	<b>L'Roteli</b> (250 m)
Nearest Restaurant	<b>Auberge Du Mont Rond</b> (7.2 km)
Nearest Ski Hire	<b>Mathias Sport 2000 Hôtel Le Crêt - Location ski et vélo Morzine</b> (5.7 km)
Nearest Ski Lift	<b>Chéry Nord (Les Gets ski area)</b> (4 km)



Nearest Ski Lift	<b>Crusaz (Morzine ski area)</b> <b>(6 km)</b>
Nearest Supermarket	<b>La Vie Claire</b> <b>(5.6 km)</b>
Nearest Tennis	<b>Adventure Morzine</b> <b>(7.6 km)</b>
Nearest Village	<b>Morzine</b> <b>(6.5 km)</b>

---

## What we love

- We loved the layout of Chalet Bouts as it offers a spacious, well-designed living area for families and groups.
- The peaceful and secluded mountainside setting that gives the chalet a private and serene atmosphere
- The relaxing outdoor hot tub, perfect for unwinding after a day of skiing or summer adventure
- Chalet Bouts is located around 7km away from the heart of Morzine, offering easy access to the town's amenities.

## What you should know...

- Chalet Bouts is in a secluded location so a car is essential for reaching Morzine's ski lifts, shops and restaurants
- The road leading to the hamlet can be steep in winter so winter tyres or chains may be required
- The terrace and garden are open so they may not be ideal for very young children without supervision
- While the chalet is equipped with Wi-Fi, phone and internet connections can fluctuate due to the surrounding mountains

# Terms & Conditions

- **Security deposit:** On the day of your arrival, please note that a security deposit of €2000 will be pre-authorized on the credit card provided and released after departure, subject to full inspection.
- **Arrival time:** 16:00 - 00:00
- **Departure time:** 10:00
- **Energy costs included?:** Yes, included in the rental price.
- **Linen & towels included?:** Yes, included in the rental price.
- **Pets welcome?:** Not allowed.
- **Changeover day:** Flexible depending on season
- **End of stay cleaning available?:** Yes, included in the rental price, along with a mid-stay clean (if staying for 7-nights or more) including a towel change and toiletry refill. Guests are required to leave the accommodation clean, tidy and in the same condition as on their arrival. Any extra cleaning, laundry, maintenance and/or rubbish disposal required will be charged against the security deposit.
- **Smoking Allowed?:** Smoking & Vaping are not permitted.
- **Minimum stay:** 4-7 nights, can vary between seasons.
- **Heating costs included?:** Yes, included in the rental price.
- **Tax:** Tourist Tax included in the rental price.
- **Internet access?:** Wi-Fi internet access included.

**The chalet is available year-round, but facilities, property and local amenities may vary depending upon season.**