

Chalet Rain

Region: Ski Circus **Sleeps:** 10

Overview

Perched high amidst the tranquil mountain valleys, Chalet Rain offers an unparalleled retreat blending modern luxury with Alpine charm. Spanning 1000 square meters, this exquisite chalet accommodates up to 10 guests across 5 opulent bedrooms. The floor-to-ceiling windows in the grand living room offer breathtaking panoramic views, creating an atmosphere of serenity and wonder. Guests can indulge in lavish amenities within the chalet, including a 14-meter pool, a state-of-the-art fitness room with a rock-climbing wall, and a home theatre with a colossal 3.6-meter screen. The chalet is located near cultural gems like Salzburg and Kitzbühel, and offering endless outdoor activities, Chalet Rain promises an unforgettable escape in Austria.

Beyond luxury, Chalet Rain prioritizes sustainability with CO2-free operations powered by geothermal heat pumps and solar energy. Each stay contributes to charitable initiatives for children and families in need, adding a meaningful touch to the experience.

The chalet is available year-round, but facilities, property and local amenities may vary depending upon season.

Winter | Ski Chalet

November - April

Chalet Rain transforms into a haven for winter sports enthusiasts and those seeking cosy luxury during the winter months. Guests can easily access nearby ski slopes and winter hiking trails, perfect for exploring Austria's snowy landscapes. After a day on the slopes, unwind in the chalet's warm embrace—relax by the fireplace in the stylish living room, take a dip in the indoor pool, or rejuvenate in the sauna. The home theatre is perfect for apres-ski entertainment, while the gourmet kitchen invites culinary adventures. Chalet Rain's winter experience combines outdoor adventure with indoor comfort, ensuring guests create cherished memories against the backdrop of snow-covered mountains and starlit nights.

Summer | Alpine Chalet

June - September

In summer, Chalet Rain offers a different kind of Alpine retreat, where guests can bask in the sun's warmth and explore the lush green surroundings. Outdoor enthusiasts can embark on hiking, mountain biking, and climbing adventures, discovering hidden lakes and panoramic viewpoints. The chalet's expansive outdoor playgrounds cater to families, offering virtual alpine landscapes and sports facilities for active play. For relaxation, the



outdoor terrace, with its scenic vistas, provides an ideal spot for morning yoga or evening cocktails. Inside, the fitness room remains a hub for wellness activities, complemented by the refreshing indoor pool. Guests can also venture to nearby cultural attractions or indulge in local cuisine in quaint villages nearby. Chalet Rain in summer promises a blend of outdoor exploration, relaxation, and cultural immersion amid Austria's natural beauty.

Whether winter or summer, Chalet Rain ensures an extraordinary experience where luxury, sustainability, and adventure converge to create unforgettable moments for every guest.

Facilities

Lift • Games Room • Air-Con • Private Pool • Gym/Fitness Room • DVD • Cots (Cribs) • Indoor Games • Walk to Village • Spa/Massage • Rural Location • Watersports • Tennis Nearby • Table Tennis • Pool/Snooker • Eco Friendly (Sustainable) • Wow Factor • Garage • Lakes and Mountains • Golf Nearby • Wi-Fi/Internet • Instagrammable • Modern • Ski Chalet • Summer Chalet • Wellness • Yoga Classes Available • Spa Treatments Available • Offers a free electric car charging point • Playground nearby • Uses solar energy • Self-Catered • Ski Hire Available • Children's videos/DVDs • Uses green energy • Xbox/Playstation/Wii • Playground • Swings • Trampoline • Slide • Climbing frame • Heated Pool • Supports the local community (locally owned) • Ideal for Babies & Toddlers • Ideal for Kids • Pool inflatables • Footballs • Football net • Mini-football goals • Soccer • Ideal for Teens • Pets on Request • Hot Tub • Walk to Restaurant • Washing Machine • Tumble Dryer • Dishwasher • Microwave • Coffee Machine • Electric Car Charger • Safety Deposit Box • Hairdryer • Ideal for Xmas/NY • Ground Floor Bed & Bath • Smart TV • TV • Wheelchair Access • Sauna/Steam • Outdoor Games • Table Football • Home Cinema • Working Fireplace/Woodburner • Heating • High Chair(s) • Parking Space • Walking/Hiking Paths • Skiing • Cycling • Horse Riding • Fishing • Outstanding Landscapes • Outdoor Pursuit & Activities • Tourist Towns & Villages • Paragliding

Interior & Grounds

The Chalet

Interior

First Floor

- Home movie theatre with near-wall laser projector by Sony and adjustable leather reclining chairs, PlayStation
- Wellness area
- Fitness room
- Rock climbing wall with foam mat
- X3 Children's playground indoor and outdoor

Second Floor

- Sitting area with almost five-meter tall windows from ceiling to floor
- Dining area
- Kitchen area
- Separate WC
- Large terrace
- Living room with grand piano

Third Floor

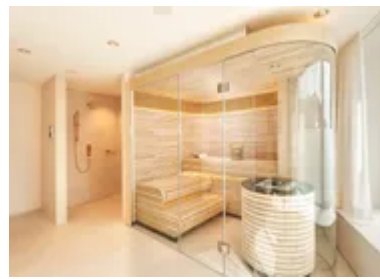
- 1 x Double bedroom with dressing area, freestanding bathtub and en-suite shower room. (67m²)
- 1 x Double bedroom with hanging seating area and en-suite shower room. (49m²)
- 1 x Double bedroom with seating area and en-suite shower room. (45m²)
- 1 x Double bedroom with en-suite shower room. (36m²)
- 1 x Double bedroom with en-suite shower room. (29m²)

Exterior

- Dining set for 10 people each
- Lounge set for 10 people each
- Large patio area
- Sculpture by David Harber
- X5 Garage spaces

Additional Facilities

- Lift
- Wifi



- Heating system with geothermal heat pumps
- Independent power generation with photovoltaics
- Completely CO2-free operation
- Automatic aeration with air humidification and heat recovery
- Triple thermal insulation glazing
- All bedrooms with double (blackout) curtains
- Sound-insulated doors
- All beds 2 x 2 m
- Sonos systems in all rooms
- Yamaha disk grand piano with self-playing option
- Professional K-Array sound systems in the living room
- Child safety features on staircases, bed guards to prevent falls on beds and children's beds, children's high chairs
- Interactive monitors in the elevator (virtual mountain ride) and at the swimming pool (virtual aquarium)

Location & Local Information

Nestled in the picturesque hills of Leogang, Chalet Rain offers an unparalleled retreat in the heart of the Austrian Alps. This charming chalet in Leogang invites you to immerse yourself in the region's breathtaking natural beauty and serene ambience. From the moment you arrive, you'll be captivated by the panoramic views of snow-capped peaks, lush green valleys, and tranquil surroundings that promise a rejuvenating escape. Whether you're seeking a romantic getaway or a family adventure, Chalet Rain is the perfect haven for relaxation and exploration.

Leogang is a paradise for outdoor enthusiasts and cultural explorers alike. Enjoy world-class skiing and snowboarding in winter at the nearby Skircircus Saalbach Hinterglemm Leogang Fieberbrunn, offering over 270 kilometres of immaculate slopes. In the warmer months, embark on thrilling mountain bike trails and scenic hiking routes and discover hidden waterfalls. For a taste of local culture, visit the historic Leogang Mining and Gothic Museum or indulge in regional delicacies at traditional alpine huts. After a day of adventure, return to Chalet Rain to unwind in luxurious comfort, surrounded by nature's splendour, making every moment unforgettable.

Local Amenities

Nearest Airport	Salzburg Airport (71.5 km)
Nearest Airport 2	Innsbruck Airport (130 km)
Nearest Bar/Pub	Lions Lounge (2.3 km)
Nearest Equipment Hire	SchneeSportSchule Asitz Steinbergbahn (4.4 km)
Nearest Golf	Golf Club Gut Brandlhof (15.1 km)
Nearest Lift	Oer Steinbergbahn (5 km)



Nearest Piste	Skiroute nach Leogang (2.5 km)
Nearest Restaurant	LEOs Kitchen & Bar Leogang (2.3 km)
Nearest Shop	Bakery Café Ritter (2 km)
Nearest Shop	Fleischhauerei Fürstauer Butchers (2.2 km)
Nearest Ski Hire	SchneeSportSchule Asitz Steinbergbahn (4.4 km)
Nearest Ski Lift	Oer Steinbergbahn (5 km)
Nearest Supermarket	Mpreis (2.4 km)
Nearest Tennis	Tennisplatz Leogang (2.4 km)
Nearest Town	Saalfelden (8.9 km)
Nearest Track	Skiroute nach Leogang (2.5 km)
Nearest Train Station	Leogang-Steinberge Bahnst (1.3 km)
Nearest Village	Leogang (2.1 km)

What we love

- Chalet Rain spans 1000 square meters of luxurious living space, accommodating up to 10 guests across its 5 bedrooms.
- Guests enjoy amenities such as a 14-meter pool, a fitness room with a rock-climbing wall, and a home theatre with a 3.6-meter screen.
- Sustainability is key, with CO2-free operations powered by geothermal heat pumps and solar energy.
- Chalet Rain blends modern elegance with Alpine charm, offering a serene retreat amidst breathtaking mountain views.
- Situated near cultural gems like Salzburg and Kitzbühel, Chalet Rain offers easy access to rich historical sights and vibrant local culture.
- Surrounded by countless outdoor activities, guests can enjoy skiing, hiking, and exploring the natural beauty of the Austrian Alps.

What you should know...

- This property's pricing is based on self-catering, if you would like to book this property on a catered basis please visit Chalet Henne (<https://www.oliverstravels.com/ski/austria/ski-circus/leogang/chalet-henne/>).
- This chalet is also available to book for up to 20 guests with the guest house, if you would like to book for a bigger group please visit Chalet Leo (<https://www.oliverstravels.com/ski/austria/ski-circus/leogang/chalet-leo/>).
- Ensure children are monitored at all times.
- Ensure you make use of all wellness facilities within the chalet.
- Personal concierge is available during your stay by phone, WhatsApp or in person.

Terms & Conditions

- **Security deposit:** €35,000 paid via bank transfer to the owner one month before arrival and refunded two weeks after departure, subject to full inspection.
- **Arrival time:** Check-in 3.00 p.m.
- **Departure time:** Check-out 12.00 p.m.
- **Energy costs included?:** Yes, included in the rental price.
- **Linen & towels included?:** Yes, included in the rental price.
- **Pets welcome?:** Pets may only be brought along with the prior written consent of the owner. A separate fee may apply for this, which will be agreed in advance. Pets are not allowed in the bedrooms. The tenant is liable for any damage caused by pets.
- **Other Ts and Cs:** Weddings & Celebrations – only upon prior discussion and agreement with the owner. Please note that cost of food and drinks will be charged separately at cost plus applicable VAT. The lift makes the main building property fully accessible for wheelchair users. However, there are steps to the pool, therefore, this cannot be accessed.
- **Changeover day:** Flexible.
- **End of stay cleaning available?:** Yes, standard changeover clean included. Guests are required to leave the accommodation clean, tidy and in the same condition as on their arrival. Any extra cleaning, laundry, maintenance and/or rubbish disposal required will be charged against the security deposit.
- **Smoking Allowed?:** Smoking in any form, including but not limited to cigarettes, cigars, pipes, vaporizers, shishas, is strictly prohibited in all rooms of the chalet. Smoking on the balconies/terraces is only permitted with the doors closed. Extensive removal of smoke contamination (cleaning curtains etc.) will be deducted from the deposit.
- **Minimum stay:** 7 nights during festive, winter and summer high season / 3 nights during main winter and summer and low summer season.
- **Heating costs included?:** Yes, included in the rental price.
- **Pool heating charge?:** Yes, included in the rental price.
- **Tax:** Yes, € 2,05 per person per night, is included.
- **Internet access?:** Yes, included in the rental price.
- **Pool towels included?:** Yes, included in the rental price.
- **Stag & Hen Do Allowed? :** No single sex groups. No stag & hen parties.

The chalet is available year-round, but facilities, property and local amenities may vary depending upon season.