

Double Luxe Mews

Region: The South East **Sleeps:** 2

Overview

Nestled in the heart of vibrant East London, the Double Luxe Mews offers a delightful retreat for those seeking a stylish and comfortable stay. Occupying the top two floors of a former framer's workshop, this unique apartment effortlessly combines light, space, and a dash of eclectic charm.

Step inside and be greeted by a wealth of inviting spaces designed for relaxation. Curl up with a good book in the private reading library or indulge in a tranquil soak in the elegant freestanding bathtub with panoramic city views. The bedroom exudes a sense of calm and tranquillity, while the sleek kitchen beckons aspiring chefs to whip up a culinary masterpiece.

What truly sets this home apart is its distinctive interior design. Adorned with eye-catching artwork, quirky ornaments, and vintage touches, every corner tells a story of creativity and individuality. From ornate chandeliers to retro televisions, each element adds to the character and charm of the space.

Outside, the delights of East London await. Take a leisurely stroll through the neighbourhood's trendy markets, small galleries, and quirky nightlife spots. For a breath of fresh air, both Victoria and Mile End Parks are just a short walk away, offering lush green spaces perfect for a morning jog or leisurely picnic.

But perhaps the highlight of the Double Luxe Mews is its rooftop terrace, where guests can unwind and watch the sun set over the bustling cityscape. With views stretching as far as the eye can see, it is the perfect spot to toast to another unforgettable day in London.

Whether you are exploring the local sights or simply



unwinding in style, the Double Luxe Mews offers a truly unforgettable holiday experience. So why not make yourself at home and discover the magic of East London from this charming urban retreat?

Facilities

Recommended • City Homes & Apartments • Not For Little Ones • Wow Factor • <1hr to Airport • Walk to Restaurant • Wi-Fi/Internet • Easy By Train • Washing Machine • Coffee Machine • Hairdryer • Tourist Towns & Villages • TV • Laptop Friendly Workspace • Tumble Dryer • Dishwasher • Heating

Interior & Grounds

The Apartment

Interior

Level 1

- Sleek, well equipped kitchen
- Separate WC
- Open plan kitchen, living and dining area
- Private reading library
- Bathroom

Level 2

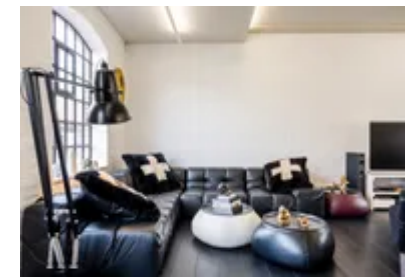
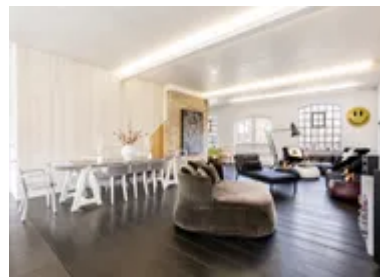
- Huge bedroom with UK super king size bed
- Glass-walled bathroom, with walk-in shower and bathtub
- Walk-in wardrobe

Exterior

- Roof terrace

Additional Facilities

- Wi-Fi
- Smart TV
- Library of books
- Toiletries
- Fresh sheets and towels
- Hair Dryer
- Washing machine and dryer
- Iron and hand-held steamer
- Heating
- Underfloor heating
- Fan
- Exercise equipment.
- Paid parking on street



Location & Local Information

Located in the vibrant neighbourhood of Bethnal Green, London, the Double Luxe Mews is nestled amidst the eclectic charm of East London. Situated within walking distance of trendy markets, small galleries, and quirky nightlife, it offers guests a quintessentially London experience.

Bethnal Green itself is steeped in history and culture, with its roots tracing back to the industrial revolution. Today, it boasts a thriving arts scene and a diverse community, making it a fascinating destination for travellers seeking an authentic London experience.

Conveniently located near Victoria and Mile End Parks, guests can easily escape the hustle and bustle of the city and enjoy a peaceful stroll amidst lush greenery. With excellent transport links nearby, including bus routes and the Bethnal Green Underground station, exploring the rest of London's attractions is a breeze from this central location. Whether you are a culture vulture, foodie, or simply looking to soak up the vibrant atmosphere of East London, Bethnal Green has something to offer everyone.

Within the wider area of Tower Hamlets, you are within close proximity of trendy Shoreditch, Victoria Park with its regular food markets and festivals, plus a short tube to the Excel and short cycle along the Thames to Greenwich Park.

Local Amenities

Nearest Airport	London City Airport (11 km)
Nearest Train Station	Bethnal Green Underground Station (400 m)
Nearest Supermarket	E & R Natural (80 m)
Sightseeing	Victoria Park (900 m)
Sightseeing	Columbia Road Flower Market (Sundays only) (2 km)
Sightseeing	Tower of London (4 km)
Sightseeing	St. Paul's Cathedral (5 km)
Sightseeing	The British Museum (6 km)



What we love

- Unique interior design with eclectic charm and heritage touches
- Rooftop terrace offering stunning views of East London
- Close proximity to trendy markets, galleries, and parks for exploring Bethnal Green's vibrant culture

What you should know...

- The entrance is on the ground floor but the living space and bedroom are spread across the first and second floors, so it might not be suitable for guests with reduced mobility
- The building has no private parking available, but Bethnal Green underground station is only five minutes' walk away
- Yoga mats are provided and are cleaned between stays

Terms & Conditions

- **Security deposit:** Oliver's Travels to charge £600 to client's credit card before arrival and refunded two weeks after departure, subject to full site inspection.
- **Arrival time:** 15:00
 - Bags can be dropped earlier if required and upon request
 - Can accommodate to earlier check-in upon request and dependant on availability
- **Departure time:** 11:00
- **Energy costs included?:** Yes, included in the rental price.
- **Linen & towels included?:** Yes, included in the rental price.
- **Pets welcome?:** On request only and with prior agreement with the owner. An additional charge may be required, this will be confirmed and paid to Oliver's Travels along with the balance.
- **End of stay cleaning:** Extra £160, paid to Oliver's Travels with the balance. Guests are required to leave the accommodation clean, tidy and in the same condition as on their arrival. Any extra cleaning, laundry, maintenance and/or rubbish disposal required will be charged against the security deposit.
- **Smoking Allowed?:** Smoking & Vaping are not permitted.
- **Minimum stay:** 3 nights.
- **Heating costs included?:** Yes, included in the rental price.
- **Stag & Hen Do Allowed? :** Weddings, stag/hen parties and any special events are not allowed.