

# Villa Aili

Region: Levi    Sleeps: 12

---

## Overview

Nestled in the picturesque landscapes of Utsuvaara, Villa Aili is a haven for those seeking both adventure and tranquillity. Just a stone's throw from the slopes and the renowned Levi Igloos, this high-quality villa comfortably accommodates twelve guests, offering the perfect base for your Lapland escape.

As you approach Villa Aili, the stunning surroundings immediately captivate you. From the terrace, you can marvel at the rugged beauty of Levi's landscapes, witness the magical transformation of the seasons, and if you are lucky, catch the Northern Lights dancing across the sky.

Stepping inside, you are welcomed by large windows that flood the interior with natural light, accentuating the quality materials and tasteful décor. The main entrance is spacious, providing ample storage and a seamless flow from one activity to the next. A secondary entrance leads directly to the utility room, perfect for managing outdoor gear.

The heart of Villa Aili is the expansive living area on the main floor. Here, a cosy living room, dining space, and a well-equipped kitchen merge to create an inviting environment for socialising and relaxation. Picture yourselves gathered around the fireplace, sharing stories of the day's adventures or enjoying a delicious meal together. The main floor also boasts a stylish sauna area, offering a perfect retreat after a day on the slopes.

The upper floor is a private sanctuary, featuring a stunning bedroom with its own bathroom. This space provides a quiet escape where you can unwind and recharge for the next day's activities.

Outside, the villa continues to impress. The terrace is an



ideal spot for morning coffees or evening drinks, with panoramic views that remind you why you chose this beautiful location. One of the ski lifts of Levi Ski Resort is conveniently located in Utsuvaara, and the centre of Levi is just eight kilometres away. This means you can enjoy the serene atmosphere of Lapland while still being close to essential services and a variety of activities.

Villa Aili is more than just a place to stay; it is a gateway to an unforgettable holiday experience in the heart of Lapland.

## Facilities

Wi-Fi/Internet • TV • Washing Machine • Villa • Skiing • Walking/Hiking Paths • Ski Pass Included • Chef/Cook Available • Northern Lights Viewing • Garage • Rural Location • Ideal for Teens • <1hr to Airport • Tumble Dryer • Dishwasher • Sauna/Steam • Working Fireplace/Woodburner • Heating • Parking Space • Outstanding Landscapes • Outdoor Pursuit & Activities • Tourist Towns & Villages

# Interior & Grounds

## The Villa

### Interior

- Open plan kitchen, living, dining area
- Fully equipped kitchen
- Utility room
- WC & shower (ground floor)
- Sauna (electric)
- Bedroom 1 - 2 single beds (ground floor)\*
- Bedroom 2 - 2 single beds (ground floor)\*
- Bedroom 3 - 2 single beds (ground floor)\*
- Bathroom (first floor)
- Shower x 2 (first floor)
- WC (first floor)
- Bedroom 4 - 2 single beds (first floor)\*
- Bedroom 5 - 2 single beds (first floor)\*
- Bedroom 6 - 2 single beds, en-suite bathroom with shower (second floor)\*

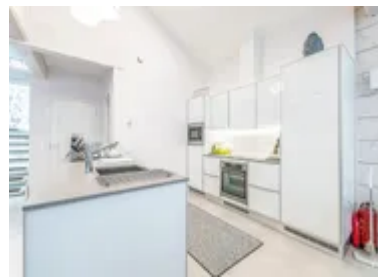
### Exterior

- Terrace
- Garage

### Additional Facilities

- Internet/Wi-Fi
- Heating
- TV
- Speakers
- Dishwasher
- Washing machine
- Dryer
- Drying cabinet
- Fireplace

*\*Please note that all beds can be pushed together to make a double*





## Location & Local Information

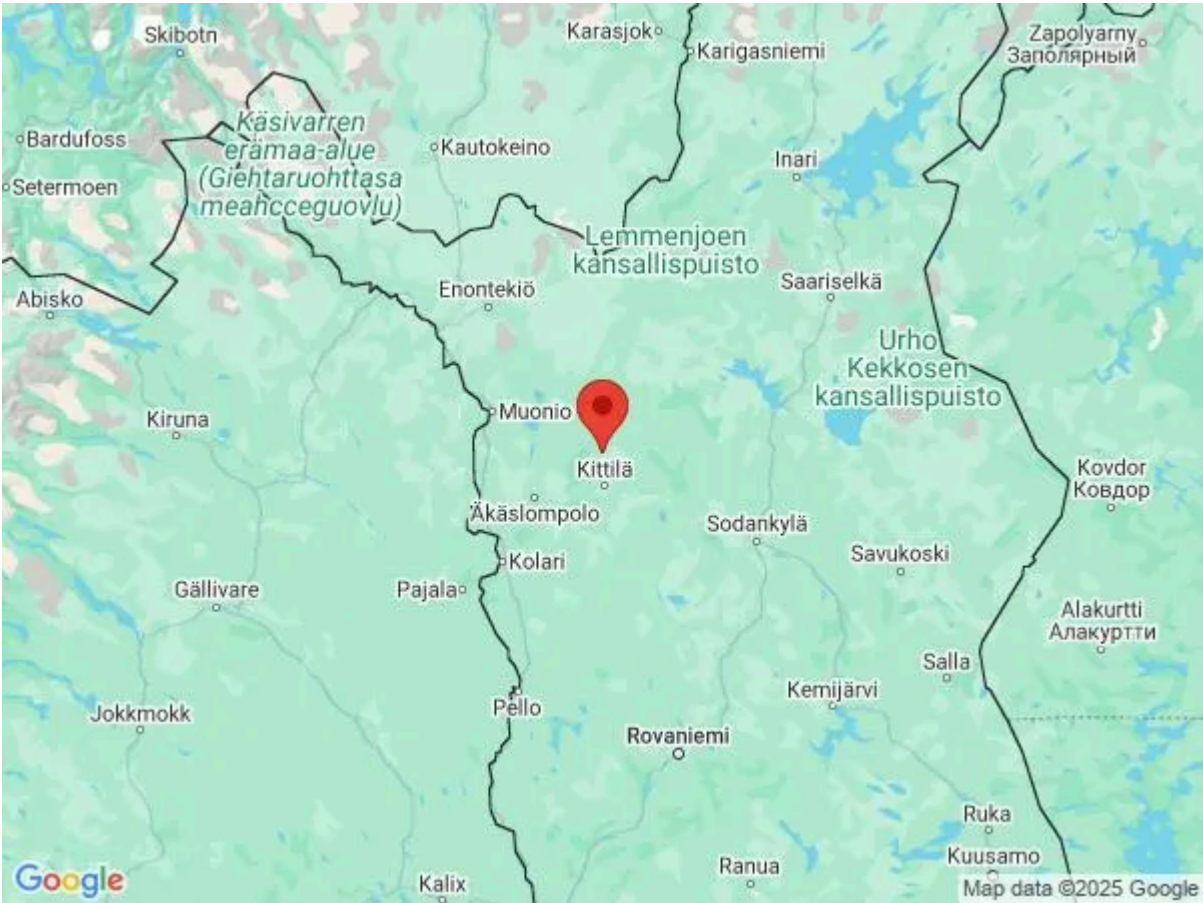
Villa Aili is located in the enchanting region of Utsuvaara, an area renowned for its stunning natural beauty and exceptional outdoor activities. Situated near the world-famous Levi Igloos and Levi Ski Resort, this destination offers a unique blend of serene wilderness and exciting adventures.

Utsuvaara is part of the broader Levi area, which is celebrated for its well-maintained ski slopes, extensive cross-country skiing trails, and vibrant après-ski scene. Beyond skiing, the area is ideal for experiencing the enchanting Northern Lights, with clear night skies providing the perfect backdrop for this natural spectacle. During the warmer months, Utsuvaara transforms into a haven for hikers, mountain bikers, and nature enthusiasts, with endless trails and breathtaking views.

Approximately eight kilometres from the bustling centre of Levi, Villa Aili offers a peaceful retreat while ensuring easy access to essential services, restaurants, shops, and various cultural attractions. This balance of tranquillity and convenience makes Villa Aili an ideal holiday destination for those looking to immerse themselves in the unique charm of Lapland.

### Local Amenities

Nearest Airport	Kittilä Airport (15km)
Nearest Ski Resort	Oy Levi Ski Resort (8km)
Nearest Ski Lift	Ski Lift (1km)
Nearest Town	Sirkka (9km)
Nearest Supermarket	Levin Levi-Market Oy (8km)



## What we love

- Just eight kilometres from Levi's centre, you get tranquillity and convenience!
- Bright and modern interiors throughout, perfect for an indulgent holiday escape.
- Perfect for Northern Lights viewing right from the terrace.

## What you should know...

- Pets are not allowed in this villa, and it is a non-smoking property.
- Watch for slippery conditions in winter; be cautious on outdoor surfaces.
- Northern Lights sightings are weather-dependent.

# Terms & Conditions

- **Security deposit:** There is no security deposit, but should there be any damage or loss caused by you or your guests during your stay you may be liable for the cost.
- **Arrival time:** 4.00 p.m.
- **Departure time:** 12.00 p.m.
- **Energy costs included?:** Yes, included in the rental price.
- **Linen & towels included?:** Yes, included in the rental price.
- **Pets welcome?:** Not allowed.
- **Changeover day:** Flexible.
- **End of stay cleaning available?:** Yes. However, guests are required to leave the accommodation clean, tidy and in the same condition as on their arrival. Any extra cleaning, laundry, maintenance and/or rubbish disposal required will be charged against the security deposit.
- **Smoking Allowed?:** Smoking & Vaping are not permitted.
- **Minimum stay:** 6 nights from 16.12 - 29.12. <br> 5 nights from 10.07 - 15.12 & 30.12 - 05.04.<br> 4 nights all other dates.
- **Heating costs included?:** Yes, included in the rental price.
- **Internet access?:** Complimentary Wi-Fi internet access is included in rental price. It is good to note that the speed is dependent on the local provider and technical issues may cause reduced speed or cut of service.