

Mercado Penthouse

Region: Lisbon Sleeps: 8

Overview

Nestled in the heart of Lisbon's vibrant Mouraria neighbourhood, Mercado Penthouse is a charming retreat that invites you to experience the city's rich culture and history firsthand. The location could not be more perfect—you are just steps away from the iconic São Jorge Castle and the famous Tram 28, making exploring Lisbon's historic sites easy. A short stroll brings you to the bustling Martim Moniz Square, where you can immerse yourself in the local flavour, with various restaurants, museums, and lively plazas right at your doorstep.

As you step into the penthouse, you are welcomed by a spacious and inviting living and dining area. The modern décor is tastefully done, combining comfort with a touch of elegance. Natural light floods the room, highlighting the thoughtful details that make this space feel like a true home away from home. Whether you are relaxing after a day of sightseeing or gathering around the dining table for a meal, this space offers a warm and welcoming atmosphere.

The penthouse boasts four well-appointed bedrooms, each designed with comfort in mind. Two rooms feature queen-sized beds, perfect for a restful night's sleep, while the other two offer twin beds, making it ideal for families or groups of friends. All the rooms are dressed in soft, comfortable linens, ensuring you wake up refreshed and ready to explore.

Step outside onto the expansive terrace, and you will be greeted by a stunning panoramic view of Lisbon's historic centre. It is the perfect spot to start your day with a leisurely breakfast or unwind in the evening as the city lights up around you. The terrace offers ample space for everyone to enjoy, making it a favourite gathering spot throughout your stay.



This is not just a place to stay but a welcoming retreat where you can create lasting memories in one of Lisbon's most dynamic neighbourhoods.

Facilities

Air-Con • City Homes & Apartments • Historical Sites • Wow Factor • <1hr to Airport • Walk to Restaurant • Parking Space • Wi-Fi/Internet • Washing Machine • Coffee Machine • Hairdryer • Tourist Towns & Villages • TV • Lift • Dishwasher • Heating • Ideal for Babies & Toddlers

Interior & Grounds

The Apartment

Interior

First Floor

- Spacious living and dining room
- Fully equipped kitchen
- Two bedrooms with twin beds
- One bathroom
- Guest toilet

Second Floor

- Two bedrooms with queen-sized beds
- Two bathrooms

Exterior

- Large terrace with seating and stunning views

Additional Facilities

- Wi-Fi
- TV
- Air Conditioning
- Heating
- Toiletry kit
- Hair dryer
- Hangers
- Iron
- Washer
- Cable TV



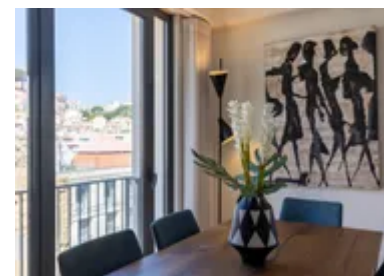
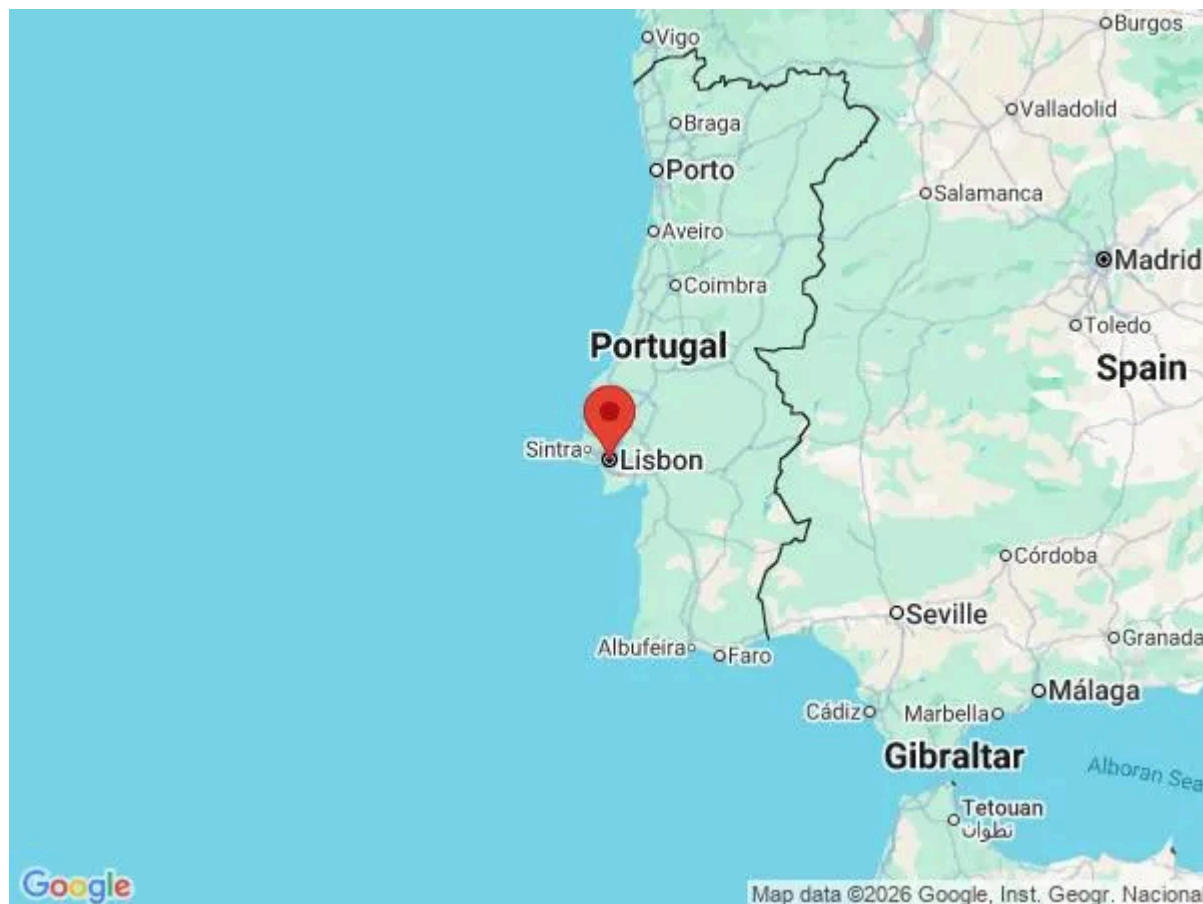
Location & Local Information

Mercado Penthouse is situated in the lively and multicultural neighbourhood of Mouraria, one of Lisbon's most historic districts. Known for its rich cultural diversity, Mouraria offers a unique blend of traditional Portuguese charm and vibrant global influences. This area is famed for being the birthplace of Fado music, and its winding streets are dotted with authentic Fado houses, local eateries, and colourful street art.

The penthouse's location is ideal for those wishing to explore Lisbon's iconic landmarks. Just a short walk away is the famous Tram 28, which offers a scenic journey through the city's narrow streets and historic sites. Nearby, you'll find the São Jorge Castle, providing a glimpse into Lisbon's past with panoramic views of the city. The bustling Martim Moniz Square, located right in front of the penthouse, serves as a gateway to downtown Baixa, where you can explore many shops, restaurants, and cultural attractions. Mercado Penthouse places you in the heart of Lisbon's vibrant history, making it a perfect base for your holiday adventures.

Local Amenities

Nearest Airport	Humberto Delgado Airport (6 km)
Nearest Train Station	Martim Moniz (7 m)
Sightseeing	Santa Justa Lift (600 m)
Sightseeing	Lisbon Cathedral (850 m)
Sightseeing	Arco da Rua Augusta (1 km)
Nearest Supermarket	Continente Bom Dia Martim Moniz (130 m)



What we love

- Wake up to stunning views of Lisbon's historic centre from the spacious terrace, perfect for relaxing any time of day
- The penthouse is just steps from the iconic Tram 28 and the historic São Jorge Castle, putting you at the heart of the city's culture
- Enjoy four cosy bedrooms, each thoughtfully designed with modern amenities and a welcoming atmosphere that makes you feel right at home

What you should know...

- Please note that this is not a party house
- Be kind to your neighbours and please avoid making noise after 22h as this is a residential building (Noise is prohibited from 22h until 8h in the morning as per the law in Portugal)
- All windows and doors must be closed when leaving the apartment or during rainfall

Terms & Conditions

- **Security deposit:** Oliver's Travels to charge €1000 to client's credit card before arrival and refunded two weeks after departure, subject to full site inspection.
- **Arrival time:** 15:00 - 21:00
- **Departure time:** 11:00
- **Energy costs included?:** Yes, included in the rental price.
- **Linen & towels included?:** Yes, included in the rental price.
- **Pets welcome?:** No pets allowed.
- **End of stay cleaning available?:** Yes. However, guests are required to leave the accommodation clean, tidy and in the same condition as on their arrival. Any extra cleaning, laundry, maintenance and/or rubbish disposal required will be charged against the security deposit.
- **Smoking Allowed?:** Smoking & Vaping are not permitted.
- **Minimum stay:** 2 nights.
- **Heating costs included?:** Yes, included in the rental price.
- **Tax:** Portuguese Visitors Tax payable to Oliver's Travels at the time of balance payment (typically costs €1-€10 per adult per night - please enquire if exact amount is required).
- **Internet access?:** Wi-Fi internet access included.
- **Stag & Hen Do Allowed? :** Weddings, stag/hen parties and any special events are not allowed.