

Apartment Ayden

Region: Portugal Sleeps: 6

Overview

As you step into Apartment Ayden, you'll find yourself right in the heart of Lisbon's vibrant Baixa district. This is a perfect base from which to delve into the city's lively culture and charming streets. The apartment is nestled within a newly constructed building, offering a blend of modern comfort and convenience with its thoughtfully designed living space.

The first thing you will notice as you walk through the door is the bright, open feel of the apartment. The two bedrooms each feature a queen-sized bed dressed in soft linens and plenty of plush pillows, promising a restful night's sleep. Through the windows, you can gaze out onto the picturesque cobblestone streets of Baixa, immersing yourself in the city's unique atmosphere.

The bathroom is fitted with a refreshing rain shower, a large mirror, and high-quality toiletries from Damana, all designed to make your stay as comfortable as possible. A handy social toilet is located near the living area for added convenience.

The living room is a welcoming space where you can unwind after a day of exploration. A comfy sofa bed, stylish Portuguese décor, and a 50-inch UHD TV provide a relaxing environment here. The Marshall sound system is perfect for enjoying your favourite tunes, and the dining table comfortably seats six, making it ideal for leisurely meals or a gathering with friends and family.

The kitchenette is compact yet fully equipped to meet all your cooking needs. It includes everything from a stove and microwave to a Nespresso machine, fridge, and dishwasher. Basic kitchen essentials like olive oil, salt, and pepper are also provided, so you can whip up a quick meal or simply enjoy a morning coffee.



Stepping outside the apartment, you are just a short stroll from some of Lisbon's best spots. Pop into Paul for fresh croissants, or head to Fabrica de Nata for renowned custard tarts. For a bit of shopping or a quick bite, Armazens do Chiado is nearby, and if you're in the mood for exploring, the Santa Justa Elevator and Rossio Train Station are just minutes away.

Facilities

Air-Con • Washing Machine • City Homes & Apartments • Coffee Machine • Hairdryer • Historical Sites • TV • Wi-Fi/Internet • Lift • Wow Factor • Laptop Friendly Workspace • Ideal for Babies & Toddlers • Walk to Restaurant • <1hr to Airport • Dishwasher • Microwave • Tourist Towns & Villages

Interior & Grounds

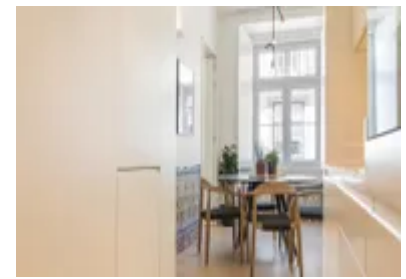
The Apartment

Interior

- Living room with a comfortable sofa bed, contemporary Portuguese décor, a 50' UHD TV, and a Marshall sound system.
- Kitchenette with a stove, a microwave oven, a Nespresso machine, a refrigerator, a freezer, a toaster, a dishwasher, a washer/dryer and more!
- Dining area
- Guest toilet
- Bedroom 1: Queen-size bed
- Bedroom 2: Queen-size bed
- Bathroom

Additional Facilities

- Wi-Fi
- TV
- Air Conditioning
- Toiletry kit
- Hair dryer
- Hangers
- Iron
- Washer
- Hot water
- Cable TV



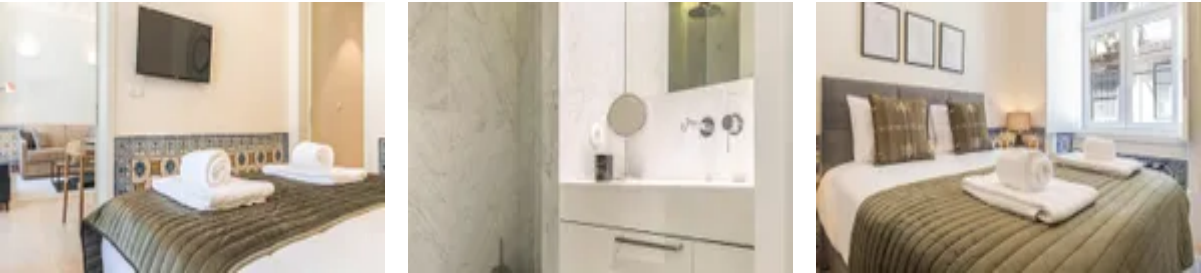
Location & Local Information

Apartment Ayden is ideally situated in Lisbon's historic Baixa district, a prime location for holidaymakers eager to experience the city's vibrant culture and rich history. This central area is renowned for its elegant squares, bustling shopping streets, and a diverse array of dining options. Within walking distance, you'll find iconic landmarks such as the Praça do Comércio, where you can enjoy scenic views of the Tagus River and stunning sunsets.

The Santa Justa Elevator, a short stroll away, offers panoramic views of the city, while the lively Chiado neighbourhood is just around the corner, perfect for shopping and café culture. For those interested in day trips, Rossio Train Station, a mere two minutes away, provides easy access to Sintra and Mafra's historic sites, while the Cais do Sodré area offers trains to the picturesque beaches of Cascais. With the nearby Baixa-Chiado metro station, exploring Lisbon and beyond is convenient and effortless. Apartment Ayden's central location ensures you're well-positioned to explore all Lisbon offers.

Local Amenities

Nearest Airport	Humberto Delgado Airport (7 km)
Nearest Supermarket	SuperMarket (120 m)
Nearest Train Station	Rossio (170 m)
Sightseeing	Santa Justa Lift (83 m)
Sightseeing	Arco da Rua Augusta (450 m)
Sightseeing	Lisbon Cathedral (750 m)



What we love

- Just steps from historic sites, shopping, and dining in Baixa—ideal for soaking up Lisbon's vibrant atmosphere
- Easy access to trains for exploring Sintra, Cascais, and more from nearby Rossio and Cais do Sodré stations
- Through the windows, you can gaze out onto the picturesque cobblestone streets of Baixa, immersing yourself in the city's unique atmosphere

What you should know...

- Train, bus, metro, taxi and tram stops are right around the corner
- Be kind to your neighbours and please avoid making noise after 22h as this is a residential building (Noise is prohibited from 22h until 8h in the morning as per the law in Portugal)
- All windows and doors must be closed when leaving the apartment or during rainfall

Terms & Conditions

- **Security deposit:** Oliver's Travels to charge €200 to client's credit card before arrival and refunded two weeks after departure, subject to full site inspection.
- **Arrival time:** 15:00 - 21:00
- **Departure time:** 11:00
- **Energy costs included?:** Yes, included in the rental price.
- **Linen & towels included?:** Yes, included in the rental price.
- **Pets welcome?:** No pets allowed.
- **End of stay cleaning available?:** Yes. However, guests are required to leave the accommodation clean, tidy and in the same condition as on their arrival. Any extra cleaning, laundry, maintenance and/or rubbish disposal required will be charged against the security deposit.
- **Smoking Allowed?:** Smoking & Vaping are not permitted.
- **Minimum stay:** 2 nights.
- **Heating costs included?:** Yes, included in the rental price.
- **Tax:** Tourist Tax is included in the rental price.
- **Internet access?:** Wi-Fi internet access included.
- **Stag & Hen Do Allowed? :** Weddings, stag/hen parties and any special events are not allowed.